

# NEWMARK

## 150 East 58th Street

### PARTIAL 29TH FLOOR:

3,453 RSF

### RENTAL RATE:

BELOW MARKET

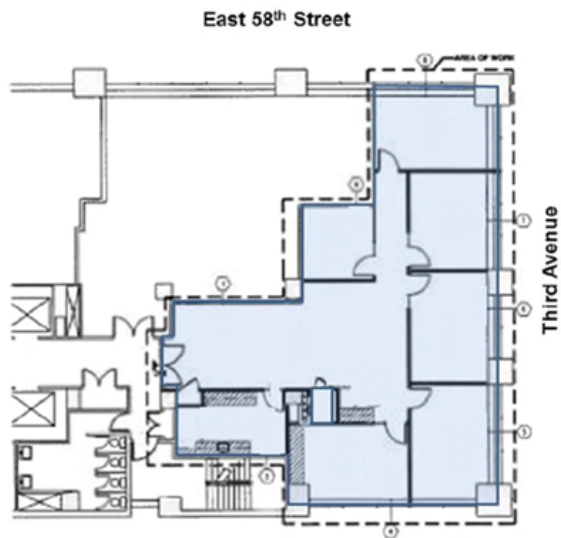
### POSSESSION:

IMMEDIATE

### TERM:

ONE (1) YEAR OR UNTIL  
APRIL 30, 2024

[DOWNLOAD BROCHURE](#)



### FEATURES:

- Great views, double corner
- Attractive, efficient layout
- 5 windowed offices, 1 interior office, open area
- Pantry
- Submetered electric
- Furniture available
- Across from Bloomberg Headquarters
- Garage in building
- First tower floor stop (Crossover Floor)
- One block from subway





---

**FOR INFORMATION, PLEASE CONTACT:**

**Barry Goodman**  
*Senior Managing Director*  
t 212-372-2377  
[brosner@ngkf.com](mailto:brosner@ngkf.com)

125 Park Avenue  
New York, NY 10017  
212-372-2377

[nmrk.com](http://nmrk.com)



The information contained herein has been obtained from sources deemed reliable but has not been verified and no guarantee, warranty or representation, either express or implied, is made with respect to such information. Terms of sale or lease and availability are subject to change or withdrawal without notice.

©2020 Newmark. All Rights Reserved.