



FOR SUBLEASE

11777

SAN VICENTE  
BOULEVARD

BRENTWOOD, CA



**Size:** 9,443 RSF  
**Rate:** \$4.25 FSG  
**Term:** Through February 29, 2024  
**Available:** March, 2019

## COMMENTS

- Highly efficient, perimeter office layout with 19 glass, window offices, 4 interior offices, 2 glass conference rooms, kitchen, file/storage and 16 built-in workstations.
- Unobstructed views to the north, west and south.
- Long-term with strong sublessor.

FOR MORE INFORMATION, PLEASE CONTACT:

**ERIC OLOFSON**

+1 310 595 2216

eric.olofson@cushwake.com

CA Lic. # 00901159

**MIKE DESANTIS**

+1 310 595 2205

mike.desantis@cushwake.com

CA Lic. # 00803921

**SCOTT MENKUS**

+1 310 595 2211

scott.menkus@cushwake.com

CA Lic. # 01476553



FOR SUBLEASE

11777

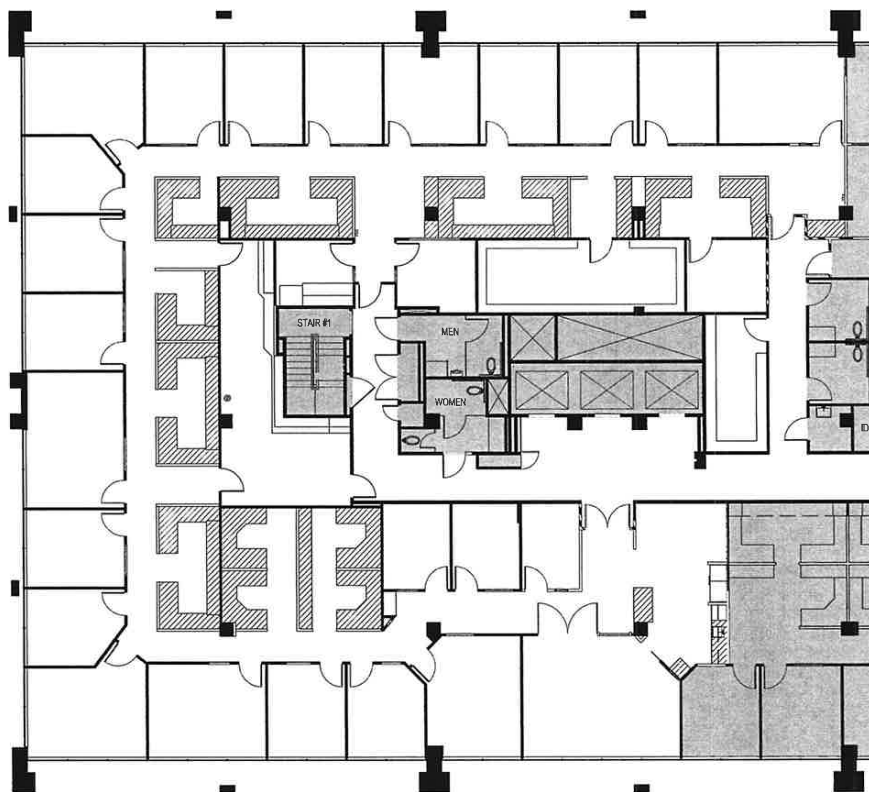
SAN VICENTE  
BOULEVARD

BRENTWOOD, CA



## FLOOR PLAN

SUITE 800 • 9,443 SF



**ERIC OLOFSON**

+1 310 595 2216

[eric.olofson@cushwake.com](mailto:eric.olofson@cushwake.com)

CA Lic. # 00901159

**MIKE DESANTIS**

+1 310 595 2205

[mike.desantis@cushwake.com](mailto:mike.desantis@cushwake.com)

CA Lic. # 00803921

**SCOTT MENKUS**

+1 310 595 2211

[scott.menkus@cushwake.com](mailto:scott.menkus@cushwake.com)

CA Lic. # 01476553



©2018 Cushman & Wakefield. All rights reserved. The information contained in this communication is strictly confidential. This information has been obtained from sources believed to be reliable but has not been verified. NO WARRANTY OR REPRESENTATION, EXPRESS OR IMPLIED, IS MADE AS TO THE CONDITION OF THE PROPERTY (OR PROPERTIES) REFERENCED HEREIN OR AS TO THE ACCURACY OR COMPLETENESS OF THE INFORMATION CONTAINED HEREIN, AND SAME IS SUBMITTED SUBJECT TO ERRORS, OMISSIONS, CHANGE OF PRICE, RENTAL OR OTHER CONDITIONS, WITHDRAWAL WITHOUT NOTICE, AND TO ANY SPECIAL LISTING CONDITIONS IMPOSED BY THE PROPERTY OWNER(S). ANY PROJECTIONS, OPINIONS OR ESTIMATES ARE SUBJECT TO UNCERTAINTY AND DO NOT SIGNIFY CURRENT OR FUTURE PROPERTY PERFORMANCE.