



FOR LEASE

Northeast Business Center

7202 E 87th Street & 7301 E 90th Street
Indianapolis, IN 46256

HOME

PARK HIGHLIGHTS

LOCATION

BUILDING 3

BUILDING 8

For more information, please contact:

Bennett M. Williams
Director
+1 317 639 0442
bennett.williams@cushwake.com

Mitchell Ostrowski
Associate
+1 317 639 0487
mitch.ostrowski@cushwake.com

cushmanwakefield.com



Property Highlights

- Single story Office/Warehouse buildings
- Conveniently located near 90th Street and I-69
- Quick access to Castleton area amenities
- Zoned I3S

Building 3

- 36,300 SF
- 9' clear in office space
- 14' clear in warehouse
- Shared common dock and loading space
- 25 designated parking spaces

Building 8

- 34,122 SF
- 9' clear in office space
- 14' clear in warehouse
- Shared common dock and loading space
- 114 designated parking spaces



For more information, please contact:

Bennett M. Williams
Director
+1 317 639 0442
bennett.williams@cushwake.com

Mitchell Ostrowski
Associate
+1 317 639 0487
mitch.ostrowski@cushwake.com

cushmanwakefield.com

HOME

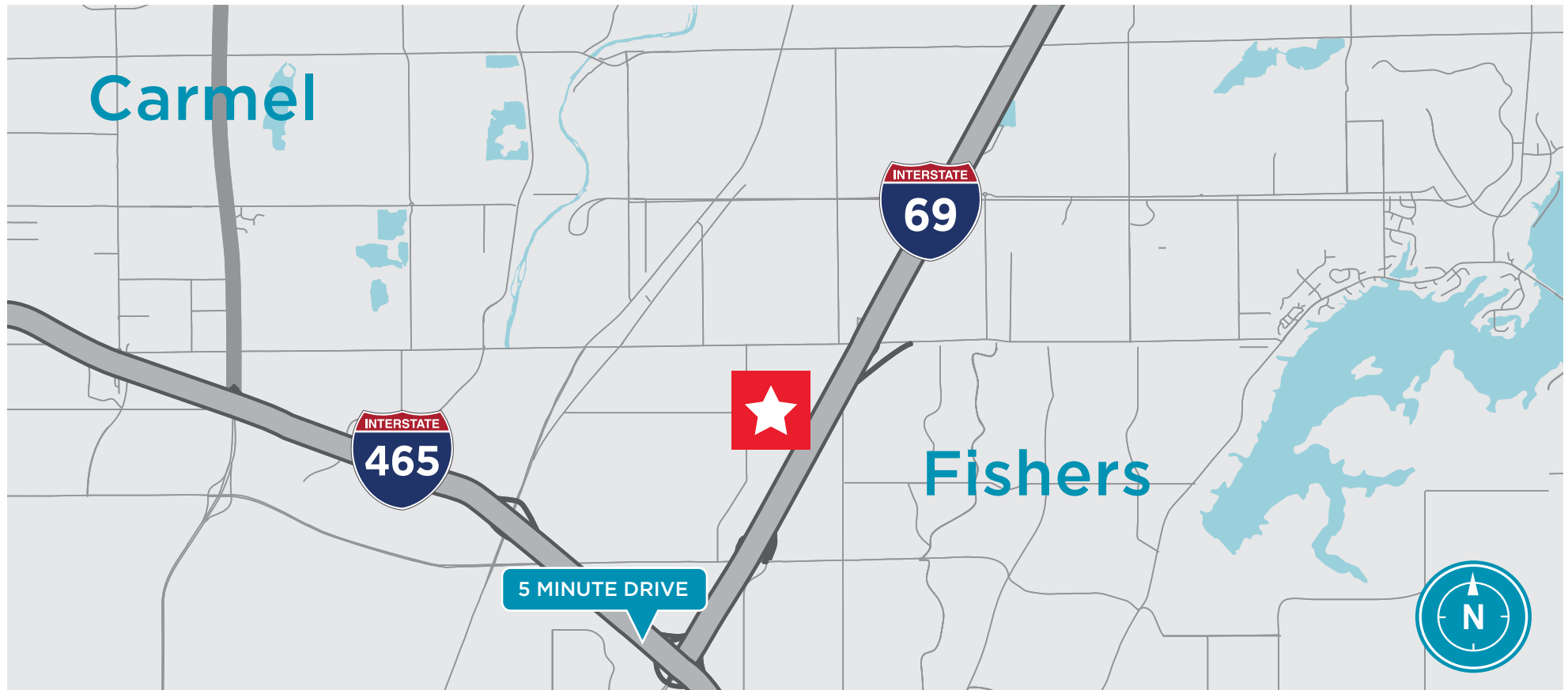
PARK HIGHLIGHTS

LOCATION

BUILDING 3

BUILDING 8

Location



For more information, please contact:

Bennett M. Williams
Director
+1 317 639 0442
bennett.williams@cushwake.com

Mitchell Ostrowski
Associate
+1 317 639 0487
mitch.ostrowski@cushwake.com

cushmanwakefield.com

[HOME](#)[PARK HIGHLIGHTS](#)[LOCATION](#)[BUILDING 3](#)[BUILDING 8](#)

Building 3 Highlights

7202 E 87th Street, Indianapolis, IN 46256

- 36,300 SF
- 3,114 SF Available
- 9' clear in office space
- 14' clear in warehouse
- Separately metered utilities
- Shared common dock and loading space
- 25 designated parking spaces



For more information, please contact:

Bennett M. Williams
Director
+1 317 639 0442
bennett.williams@cushwake.com

Mitchell Ostrowski
Associate
+1 317 639 0487
mitch.ostrowski@cushwake.com

cushmanwakefield.com

HOME

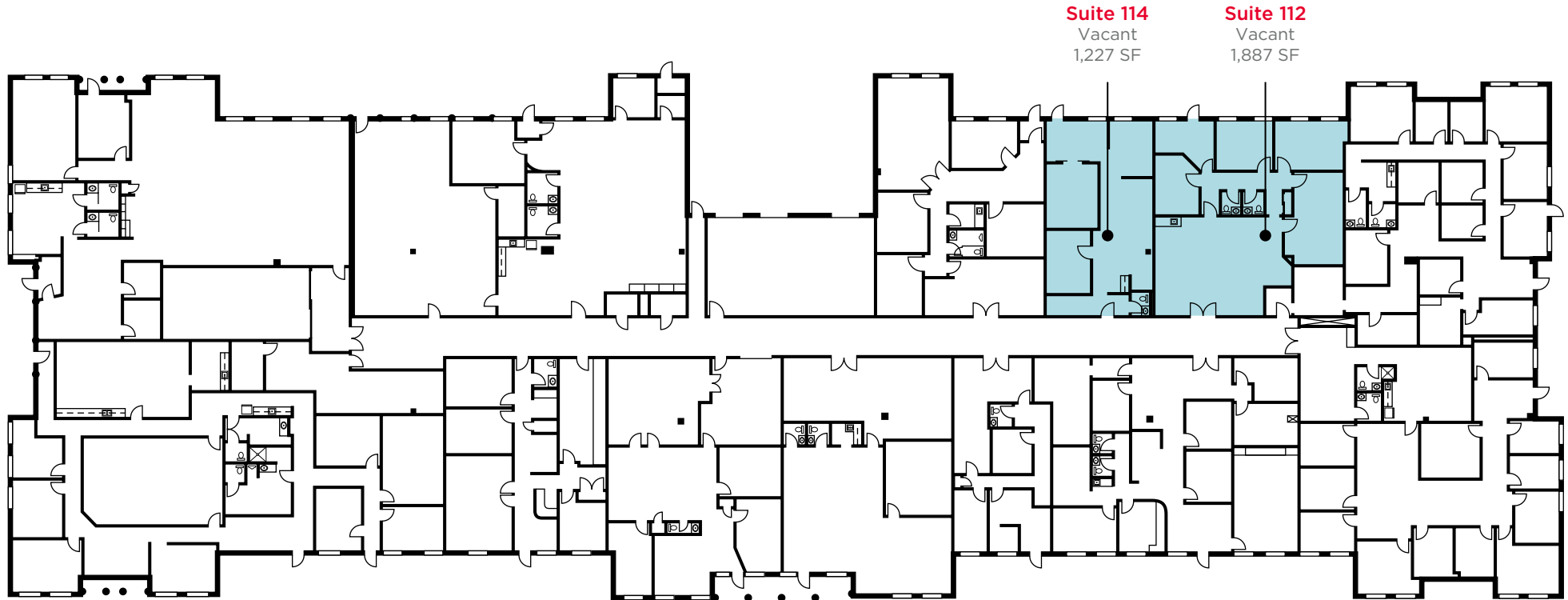
PARK HIGHLIGHTS

LOCATION

BUILDING 3

BUILDING 8

Building 3



For more information, please contact:

Bennett M. Williams
Director
+1 317 639 0442
bennett.williams@cushwake.com

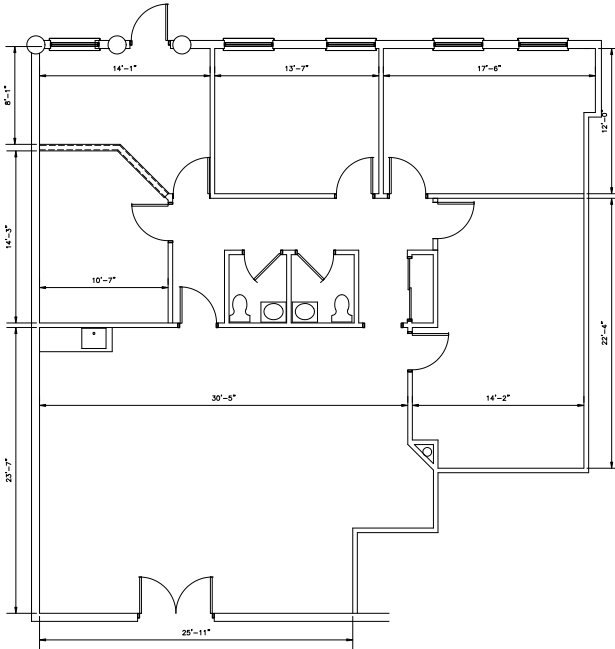
Mitchell Ostrowski
Associate
+1 317 639 0487
mitch.ostrowski@cushwake.com

cushmanwakefield.com

[HOME](#)[PARK HIGHLIGHTS](#)[LOCATION](#)[BUILDING 3](#)[BUILDING 8](#)

Building 3 | Suite 112

- 1,887 SF
- 3 private offices
- Open area with conference room



For more information, please contact:

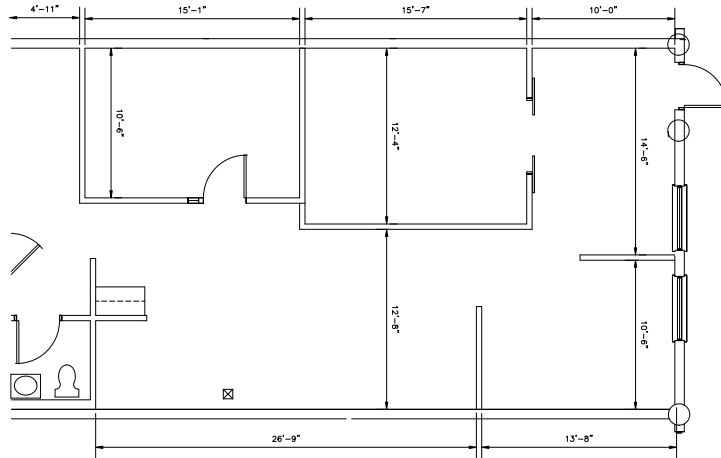
Bennett M. Williams
Director
+1 317 639 0442
bennett.williams@cushwake.com

Mitchell Ostrowski
Associate
+1 317 639 0487
mitch.ostrowski@cushwake.com

cushmanwakefield.com

Building 3 | Suite 114

- 1,227 SF
- Recently updated
- Large conference room



For more information, please contact:

Bennett M. Williams
Director
+1 317 639 0442
bennett.williams@cushwake.com

Mitchell Ostrowski
Associate
+1 317 639 0487
mitch.ostrowski@cushwake.com

cushmanwakefield.com

Building 8 Highlights

7301 E 90th Street, Indianapolis, IN 46256

- 34,122 SF
- 2,637 - 11,750 SF Available
- 9' clear in office space
- 14' clear in warehouse
- Separately metered utilities
- Shared common dock and loading space
- Three overhead doors - 2 box truck doors, 1 semi door
- 114 designated parking spaces



For more information, please contact:

Bennett M. Williams
Director
+1 317 639 0442
bennett.williams@cushwake.com

Mitchell Ostrowski
Associate
+1 317 639 0487
mitch.ostrowski@cushwake.com

cushmanwakefield.com

HOME

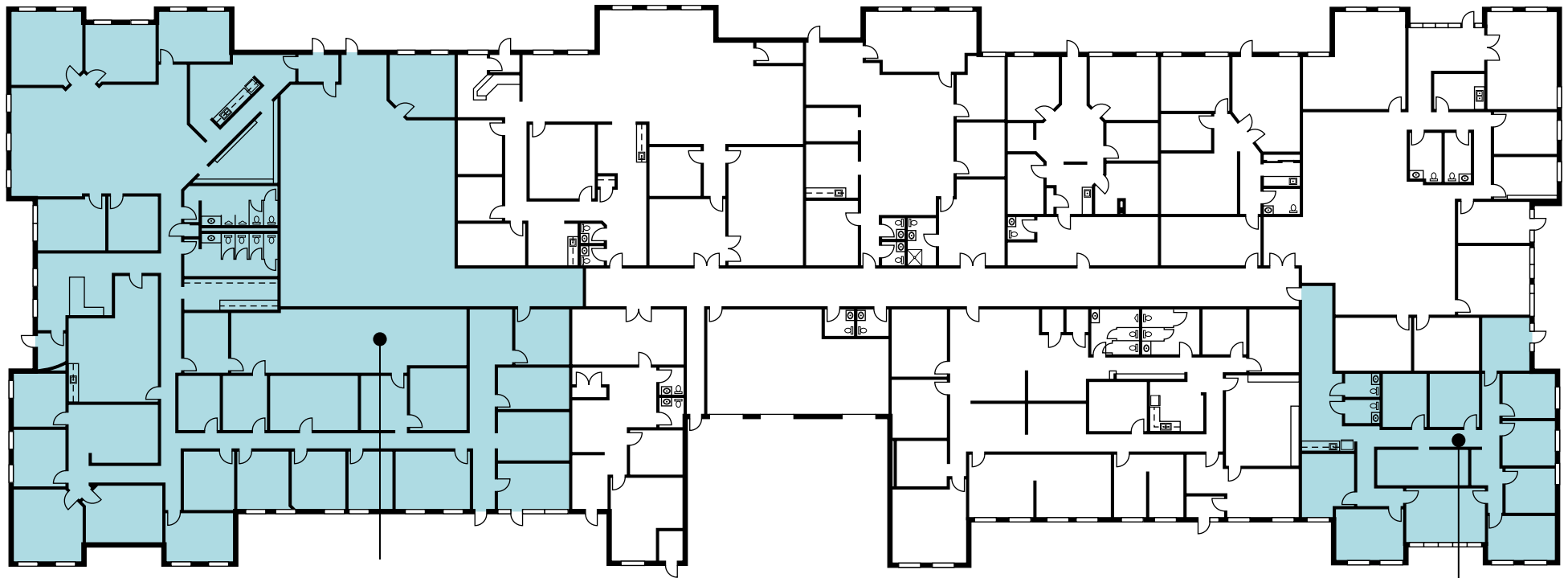
PARK HIGHLIGHTS

LOCATION

BUILDING 3

BUILDING 8

Building 8



Suite 109
Vacant
11,750 SF

Suite 110
Vacant
2,637 SF

For more information, please contact:

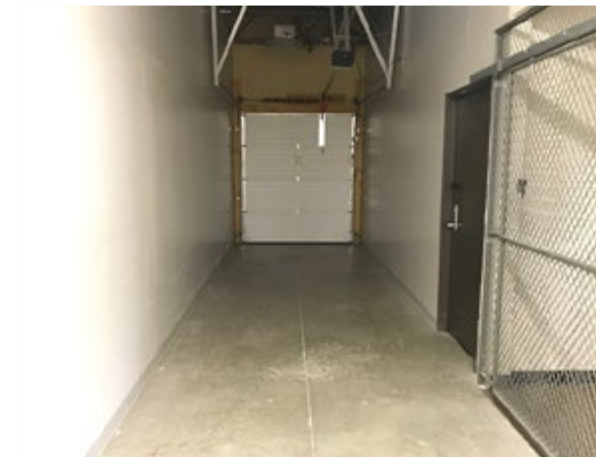
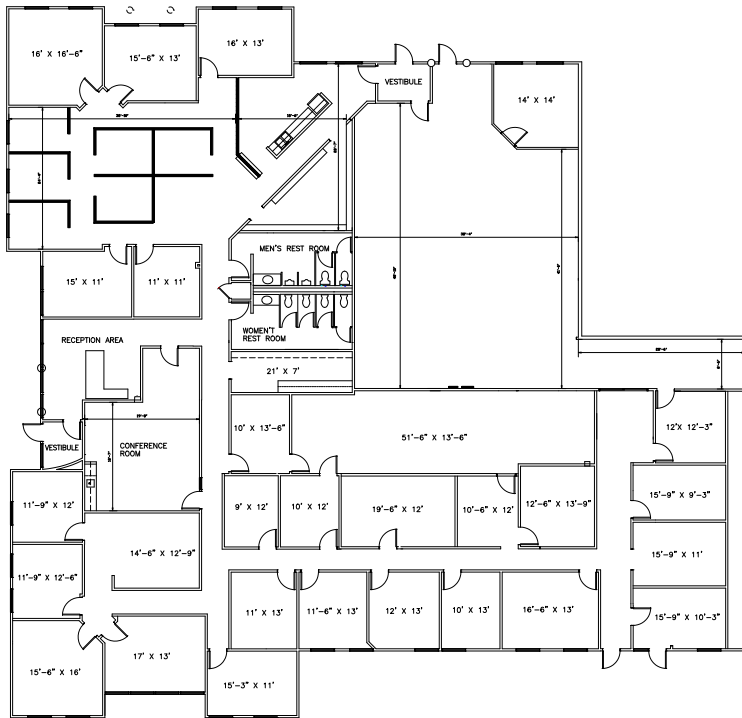
Bennett M. Williams
Director
+1 317 639 0442
bennett.williams@cushwake.com

Mitchell Ostrowski
Associate
+1 317 639 0487
mitch.ostrowski@cushwake.com

cushmanwakefield.com

Building 8 | Suite 109

- 11,750 SF
- Mix of private offices & open space
- Large break area



For more information, please contact:

Bennett M. Williams
 Director
 +1 317 639 0442
bennett.williams@cushwake.com

Mitchell Ostrowski
 Associate
 +1 317 639 0487
mitch.ostrowski@cushwake.com

cushmanwakefield.com

