



Santa Clara Office Suites For Lease

2391 The Alameda • Santa Clara, California

The information contained herein has been obtained from sources we deem reliable. We cannot, however, assume responsibility for its accuracy.

2391 The Alameda • Santa Clara, California

- Office Suites Available:
 - First floor 1,008 SF
 - Second floor 2,106 SF
- At the junction of El Camino Real and The Alameda, next to Santa Clara University
- Easily accessible to Highways 87 and 880
- Parking available on site
- Privates, Kitchenettes, ADA Restrooms
- Perfect for Law Firms, Accounting, Insurance
- Elevator and ADA accessible
- \$2.25 PSF, FS



The information contained herein has been obtained from sources we deem reliable. We cannot, however, assume responsibility for its accuracy.

2391 The Alameda • Santa Clara, California



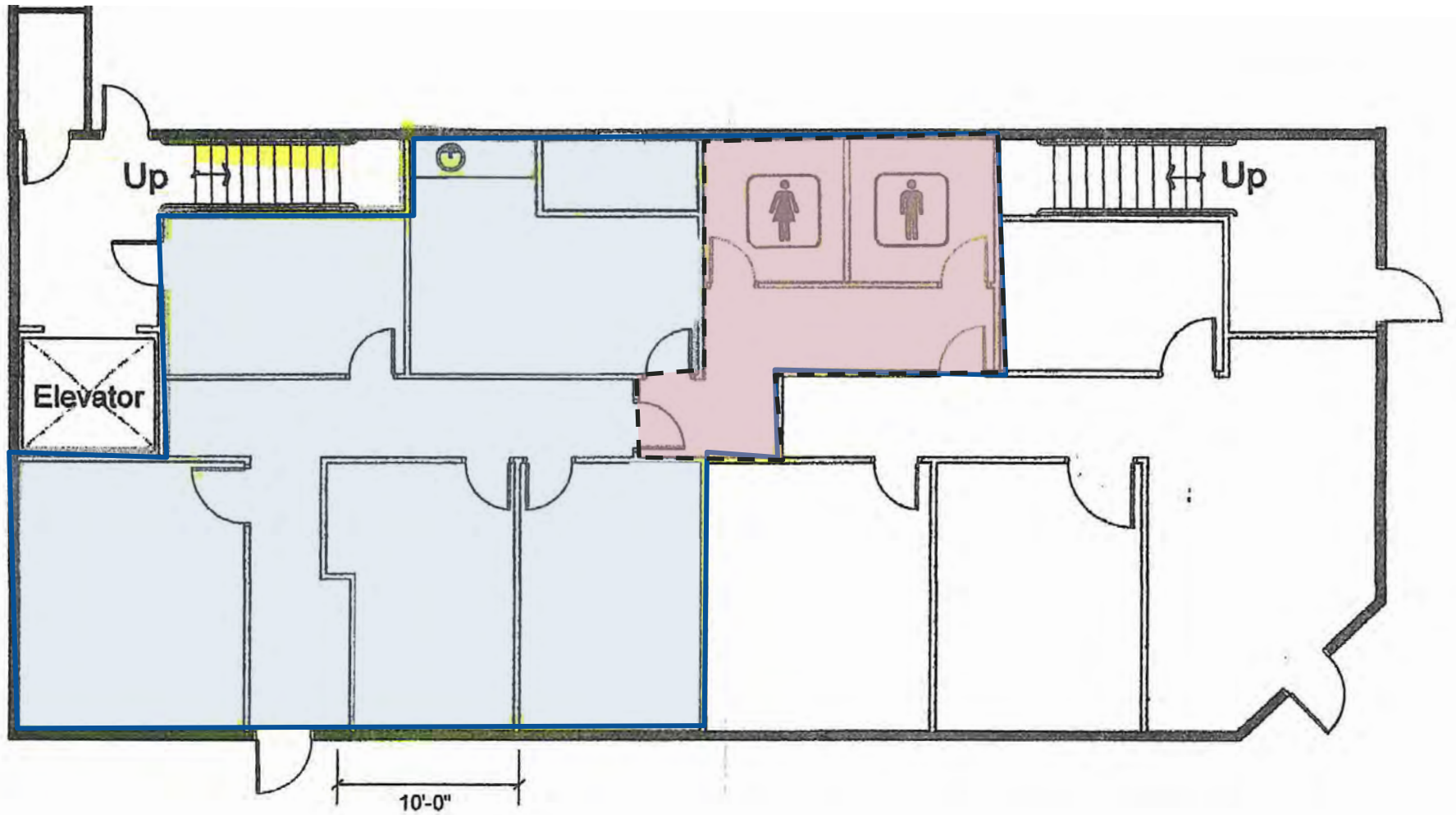
The information contained herein has been obtained from sources we deem reliable. We cannot, however, assume responsibility for its accuracy.

2391 The Alameda • Santa Clara, California



The information contained herein has been obtained from sources we deem reliable. We cannot, however, assume responsibility for its accuracy.

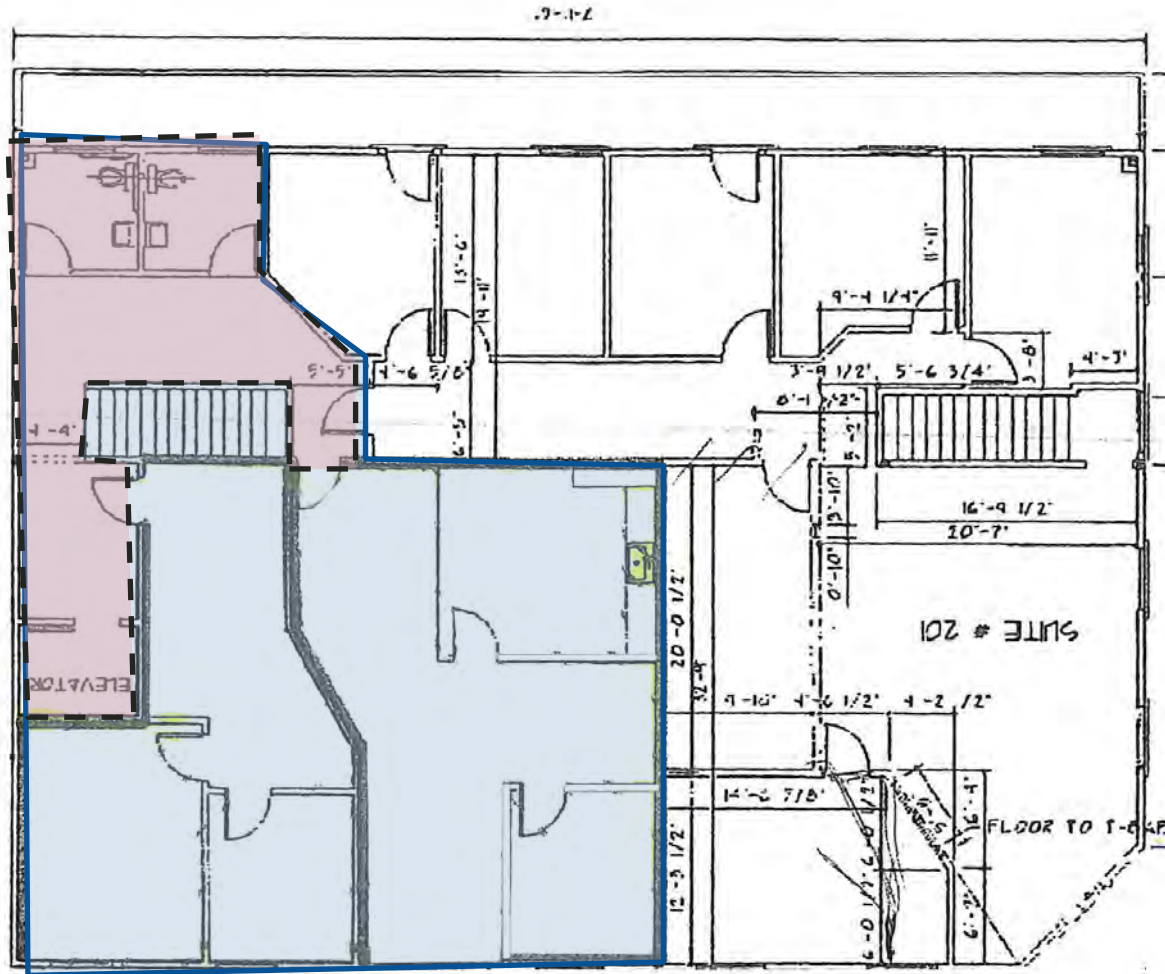
First Floor Suite: 1,008± SF Includes 50% of Common Area



The information contained herein has been obtained from sources we deem reliable. We cannot, however, assume responsibility for its accuracy.

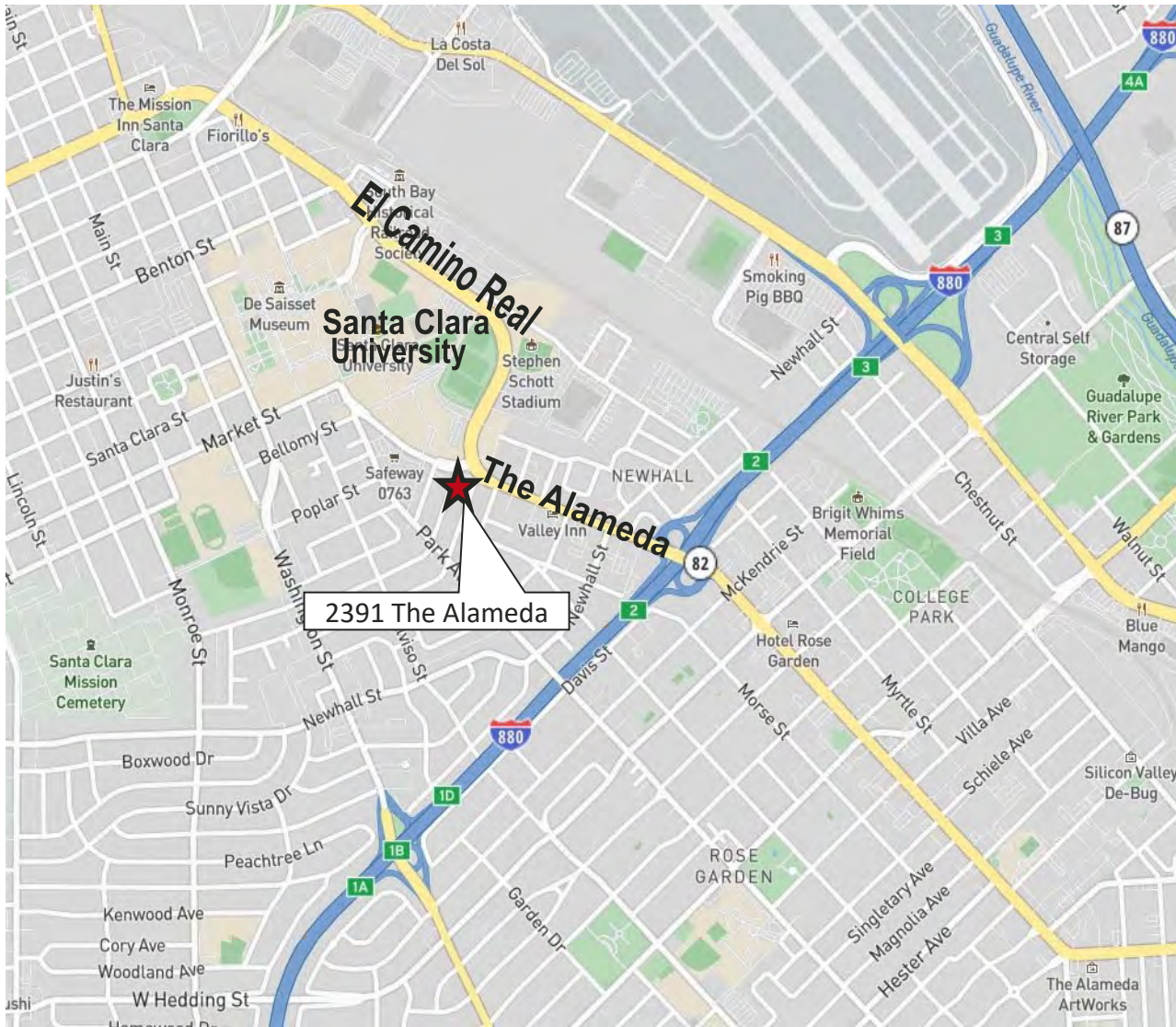
2391 The Alameda • Santa Clara, California

Second Floor Suite: 2,106± SF Includes 50% of Common Area



The information contained herein has been obtained from sources we deem reliable. We cannot, however, assume responsibility for its accuracy.

2391 The Alameda • Santa Clara, California



for more information contact:

Matt Perez

Lic. #02017798

mperez@moinc.net

(408) 477-2516

David Taxin

Lic. #00983163

dtaxin@moinc.net

(408) 477-2508

The information contained herein has been obtained from sources we deem reliable. We cannot, however, assume responsibility for its accuracy.



COMMERCIAL BROKERAGE | INVESTMENT SALES | PROPERTY MANAGEMENT

8 No. San Pedro Street, Suite 300 San Jose, California 95110

Tel: 408.378.5900 www.moinc.net