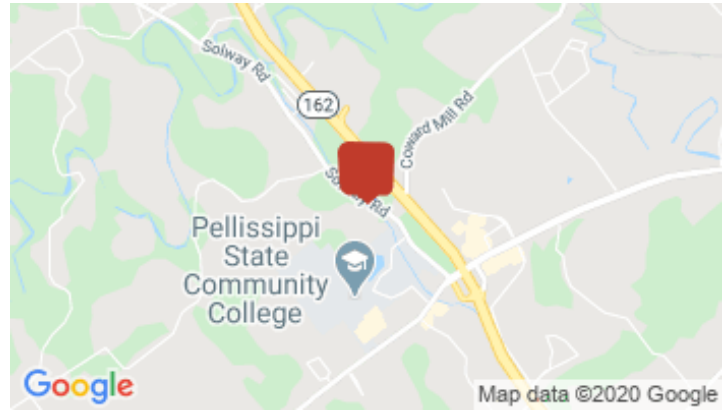
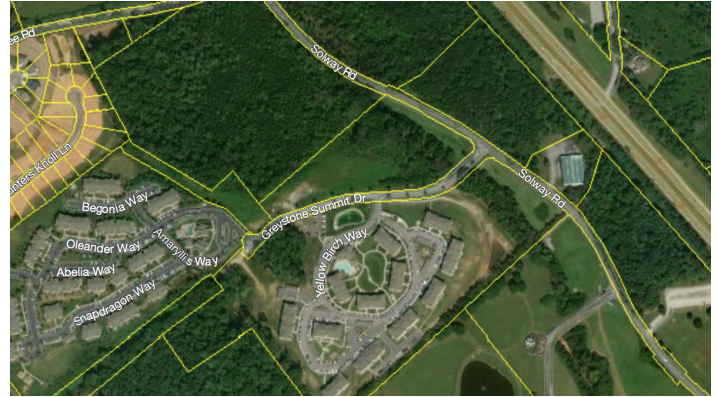


# Hardin Valley Land for Sale

## Greystone Summit Drive, Knoxville, TN 37931



Listing ID: 30333917  
Status: Active  
Property Type: Vacant Land For Sale  
Possible Uses: Multi-Family, Office  
Gross Land Area: 8.18 Acres  
Sale Price: \$800,000  
Unit Price: \$97,799 Per Acre  
Sale Terms: Cash to Seller  
Nearest MSA: Knoxville  
County: Knox  
Tax ID/APN: 103 09903  
Zoning: OB/TO (K)  
Property Visibility: Excellent



### Overview/Comments

**RECENTLY REDUCED:** Large vacant tract located in Knoxville's fastest growing residential corridor. Property is zoned for up to 98 residential units. It would make an excellent site for Class "A" apartments, residential condos, townhomes, or senior housing. The property has approximately 575' of frontage along Solway Road, which could also be considered for office or service uses. Contact for more details & pricing.