

FOR SALE

\$228,000

**COLDWELL
BANKER
COMMERCIAL****Paradise****5TH STREET SW, VERO BEACH, FL 32962**
5TH STREET SW**Property Highlights**

- 38-40 Units
- Lot Dimensions 70' X 100'
- Side Yard Setbacks are 10'
- Front Yard and Backyard depth Set Back is 20'
- Potential for 3,000 SF Home

Offering Summary

Sale Price:	\$228,000
Lot Size:	2.18 Acres
Zoning:	CH

Demographics

	1 Mile	3 Miles	5 Miles
Total Households	1,810	16,688	33,566
Total Population	4,052	39,016	78,952
Average HH Income	\$56,516	\$62,885	\$67,903

Keith D. Kite

772.231.9333

FL #BK3172900

keith@kitepropertiesllc.com

Kollin G. Kite

772.633.5640

FL #SL3340957

kollin@kitepropertiesllc.com

The Kite Team

WWW.CBCWORLDWIDE.COM / WWW.KITEPROPERTIESLLC.COM**COLDWELL BANKER COMMERCIAL | PARADISE**

1950 US HIGHWAY 1, VERO BEACH, FL 32960

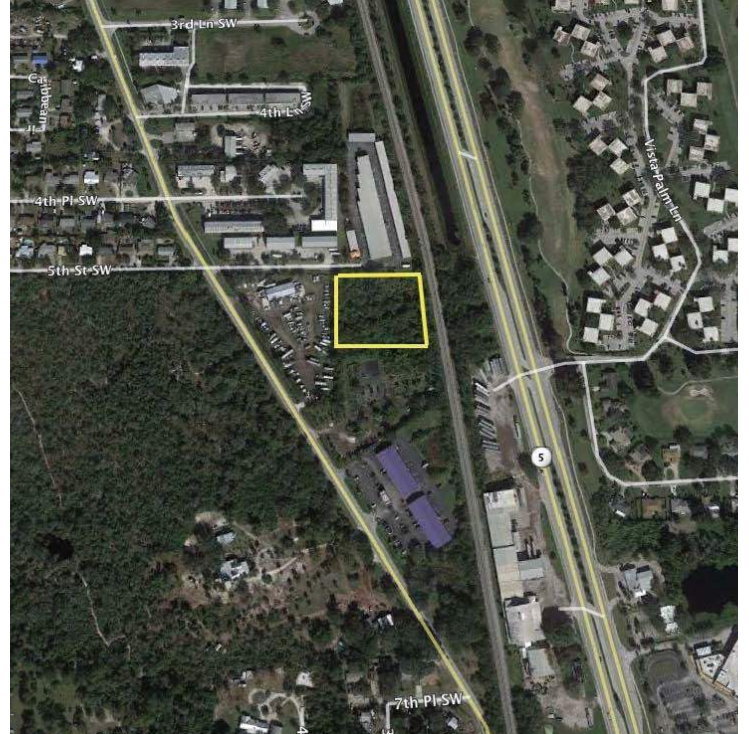
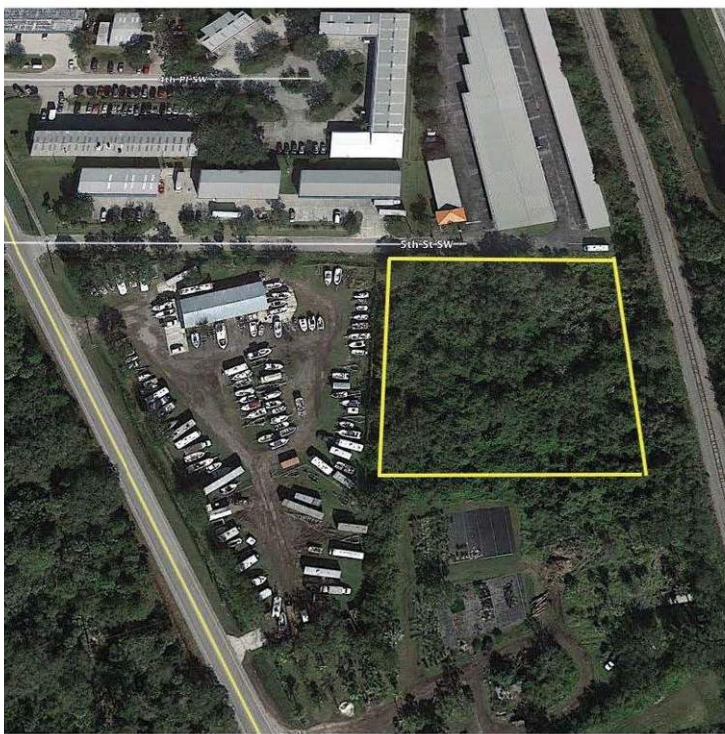
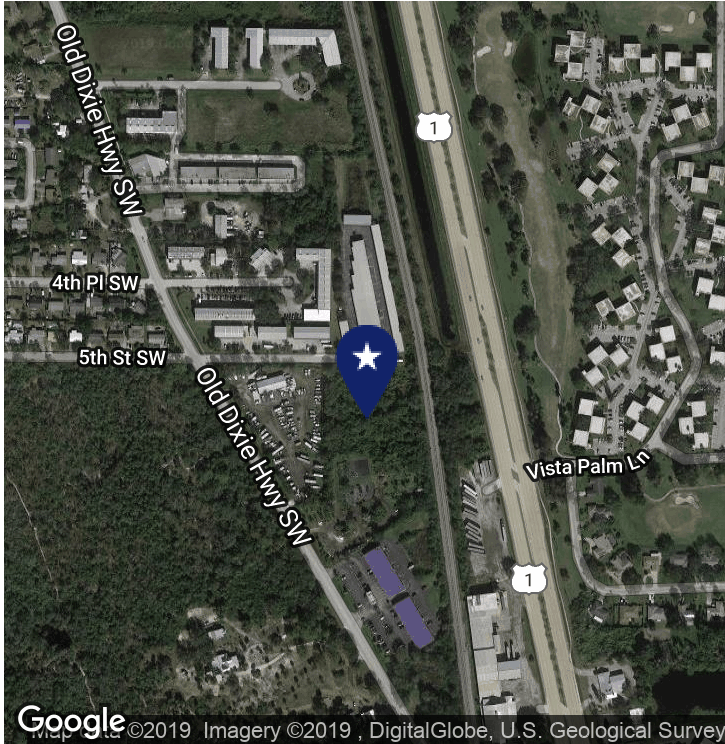
772-231-9333





5TH STREET SW

5th Street SW, Vero Beach, FL 32962



Keith D. Kite

772.231.9333

FL #BK3172900

keith@kitepropertiesllc.com

Kollin G. Kite

772.633.5640

FL #SL3340957

kollin@kitepropertiesllc.com