

INDUSTRIAL BUILDING  
FOR LEASE



755 SOUTH POINT BLVD  
PETALUMA | CA

FREE STANDING WAREHOUSE BUILDING  
UP TO ±89,420 SQUARE FEET



**Brian Foster**  
Managing Director  
+1 415 451 2437  
brian.foster@cushwake.com  
LIC #01393059

**Steven Leonard**  
Managing Director  
+1 415 451 2434  
steven.leonard@cushwake.com  
LIC #01255462

**Trevor Buck**  
Executive Director  
+1 415 451 2436  
trevor.buck@cushwake.com  
LIC #01255462

900 Larkspur Landing Circle  
Suite 295, Larkspur, CA 94939  
p: 415 485 0500  
f: 415 485 1341  
[cushmanwakefield.com](http://cushmanwakefield.com)

# INDUSTRIAL SPACE 755 SOUTH POINT BLVD | FOR LEASE



## HIGHLIGHTS |

Free standing industrial building available consisting of approximately ±89,420 Square Feet with excellent loading capabilities and clear height. Centrally located in Southern Sonoma County with freeway visibility and ample truck and car parking.

755 South Point is close to Redwood Business Park, downtown Petaluma & amenities.

Close proximity to:



### 755 South Point Blvd

- 8 Dock doors
- 3 Grade level doors
- 25'-28' Clear height
- 161 Parking spots
- Clear story windows in warehouse providing natural light.



### Logistics

- Direct access to HWY 101
- 20 miles to Santa Rosa
- 24 miles to San Rafael
- 26 miles to Napa
- 40 Miles to San Francisco
- 80 Miles to Sacramento



### Labor

- Sonoma County Population: 483,878
- Sonoma County Population: 252,409

**Brian Foster**  
Managing Director  
+1 415 451 2437  
brian.foster@cushwake.com  
LIC #01393059

**Steven Leonard**  
Managing Director  
+1 415 451 2434  
steven.leonard@cushwake.com  
LIC #01255462

**Trevor Buck**  
Executive Director  
+1 415 451 2436  
trevor.buck@cushwake.com  
LIC #01255462

900 Larkspur Landing Circle  
Suite 295, Larkspur, CA 94939  
p: 415 485 0500  
f: 415 485 1341  
[cushmanwakefield.com](http://cushmanwakefield.com)

# INDUSTRIAL SPACE 755 SOUTH POINT BLVD | FOR LEASE



## SITE PLAN |

### FIRST FLOOR

Total Suite A: 10,158 SF  
 Total Suite B: 17,558 SF  
 Common Elec: 222 SF

### SECOND FLOOR (Can be leased separately)

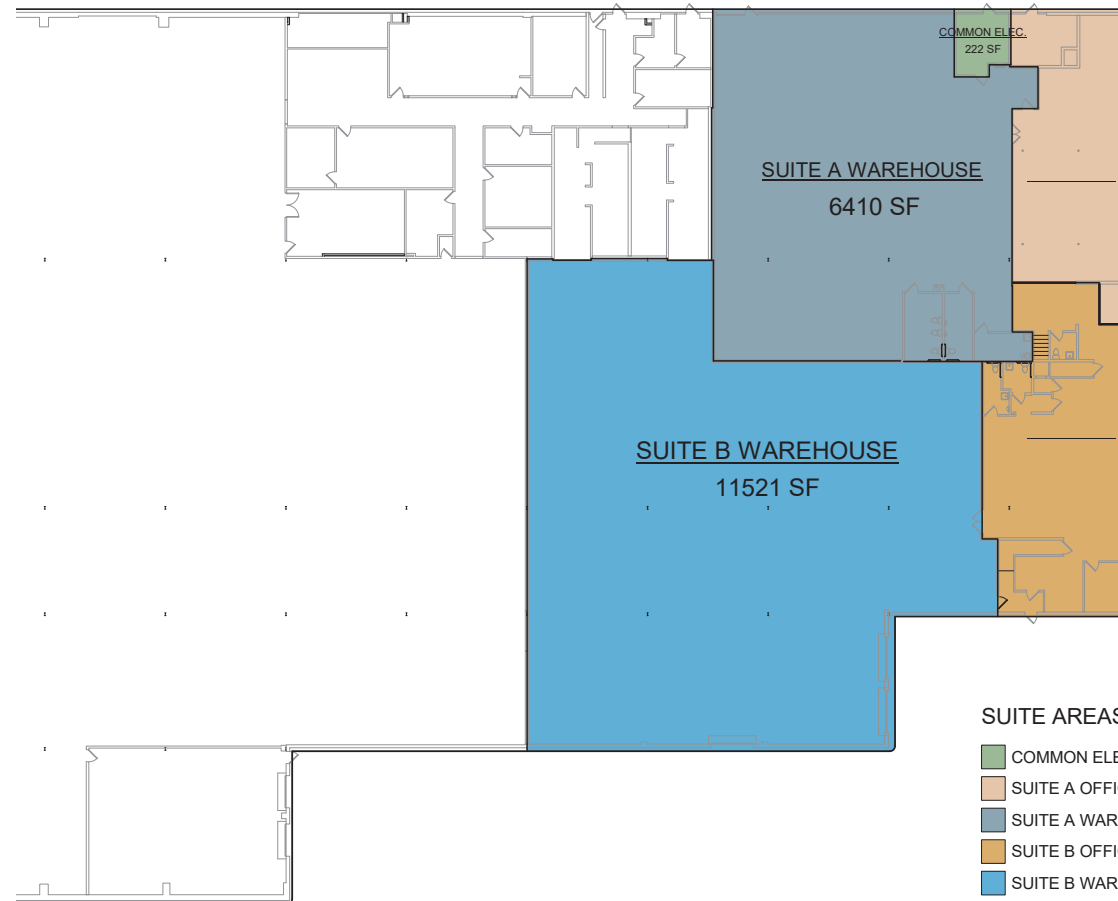
Total Suite A Office: 1,688 SF  
 Total Suite B Office: 3,274 SF

**PRICE: Call for information**

### SITE FEATURES

**Rent:** Contact agents  
**Stories:** Two story office  
**Construction Type:** Steel frame Dryvit exterior  
**Clear Height:** Minimum 24' clear up to 28' clear  
**Loading:** 8 dock doors, 3 grade level doors  
**Parking:** 161 Parking spaces  
**Signage:** US 101 Freeway visible signage available

### FIRST FLOOR

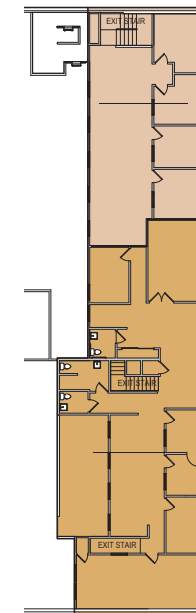


### SUITE AREAS

- COMMON ELEC.
- SUITE A OFFICE
- SUITE A WAREHOUSE
- SUITE B OFFICE
- SUITE B WAREHOUSE

FIRST FLOOR:  
 TOTAL SUITE A: 10,158 S.F.  
 TOTAL SUITE B: 17,550 S.F.  
 COMMON ELEC: 222 S.F.

### SECOND FLOOR



### SUITE AREAS

- SUITE A OFFICE
- SUITE B OFFICE

SECOND FLOOR:  
 TOTAL SUITE A: 1,688 S.F.  
 TOTAL SUITE B: 3,274 S.F.

**Brian Foster**  
 Managing Director  
 +1 415 451 2437  
 brian.foster@cushwake.com  
 LIC #01393059

**Steven Leonard**  
 Managing Director  
 +1 415 451 2434  
 steven.leonard@cushwake.com  
 LIC #01255462

**Trevor Buck**  
 Executive Director  
 +1 415 451 2436  
 trevor.buck@cushwake.com  
 LIC #01255462

900 Larkspur Landing Circle  
 Suite 295, Larkspur, CA 94939  
 p: 415 485 0500  
 f: 415 485 1341  
**cushmanwakefield.com**

# INDUSTRIAL SPACE

## 755 SOUTH POINT BLVD | FOR LEASE



### SITE PLAN |

#### FIRST FLOOR

Total Suite A: 10,158 SF  
 Total Suite B: 17,558 SF  
 Common Elec: 222 SF  
 Total Suite C: 61,990 SF

#### SECOND FLOOR (Can be leased separately)

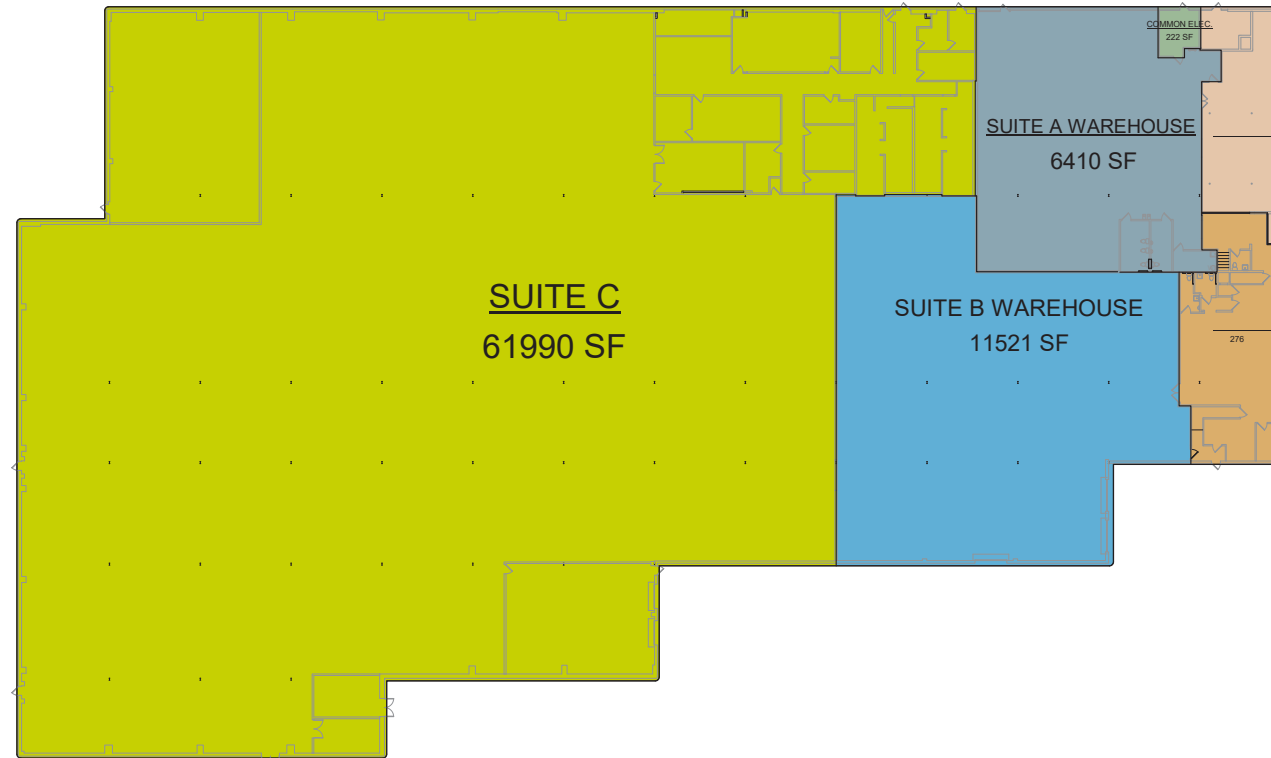
Total Suite A Office: 1,688 SF  
 Total Suite B Office: 3,274 SF

**PRICE: Call for information**

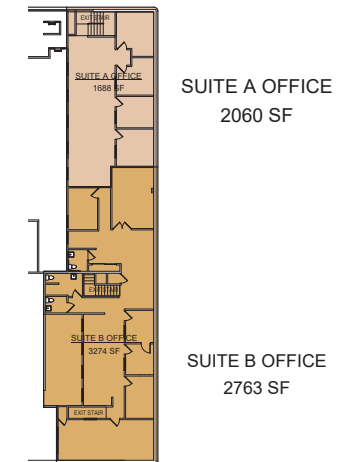
#### SITE FEATURES

**Rent:** Contact agents  
**Stories:** Two story office  
**Construction Type:** Steel frame Dryvit exterior  
**Clear Height:** Minimum 24' clear up to 28' clear  
**Loading:** 8 dock doors, 3 grade level doors  
**Parking:** 161 Parking spaces  
**Signage:** US 101 Freeway visible signage available

FIRST FLOOR



SECOND FLOOR

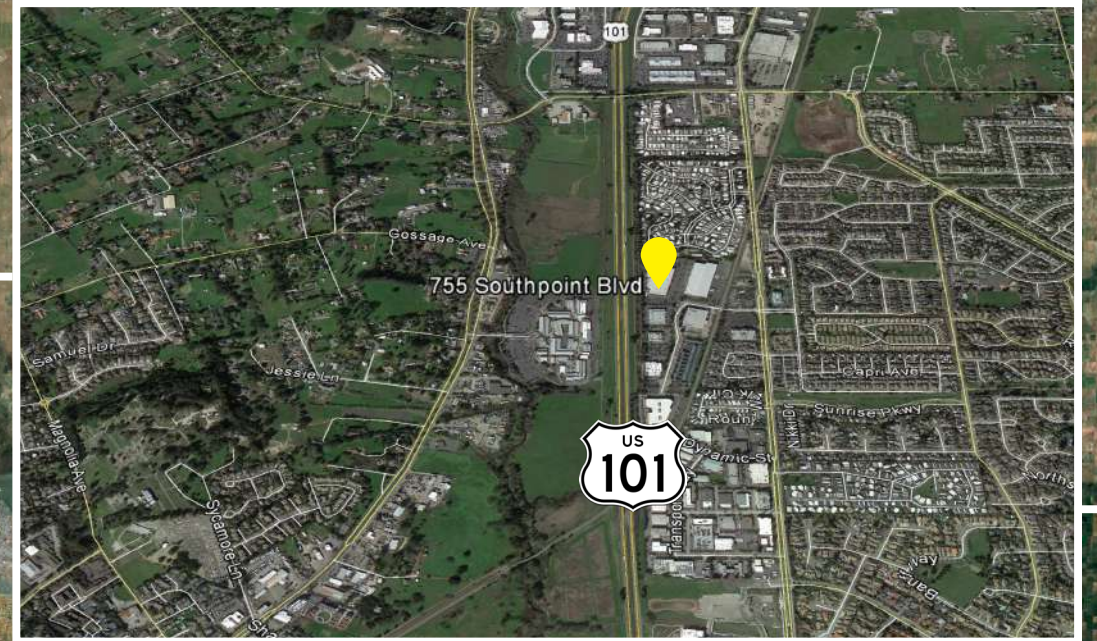
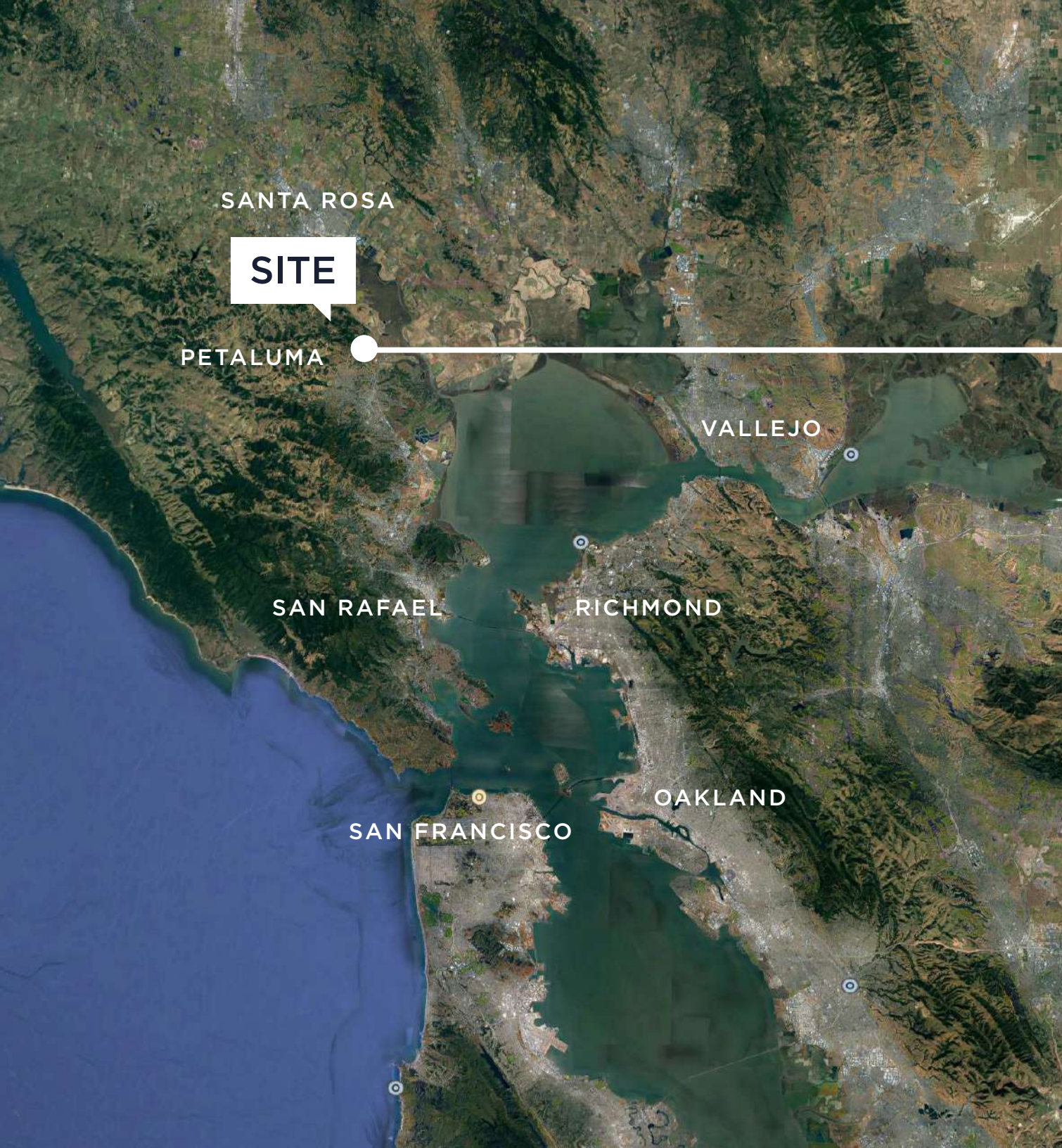


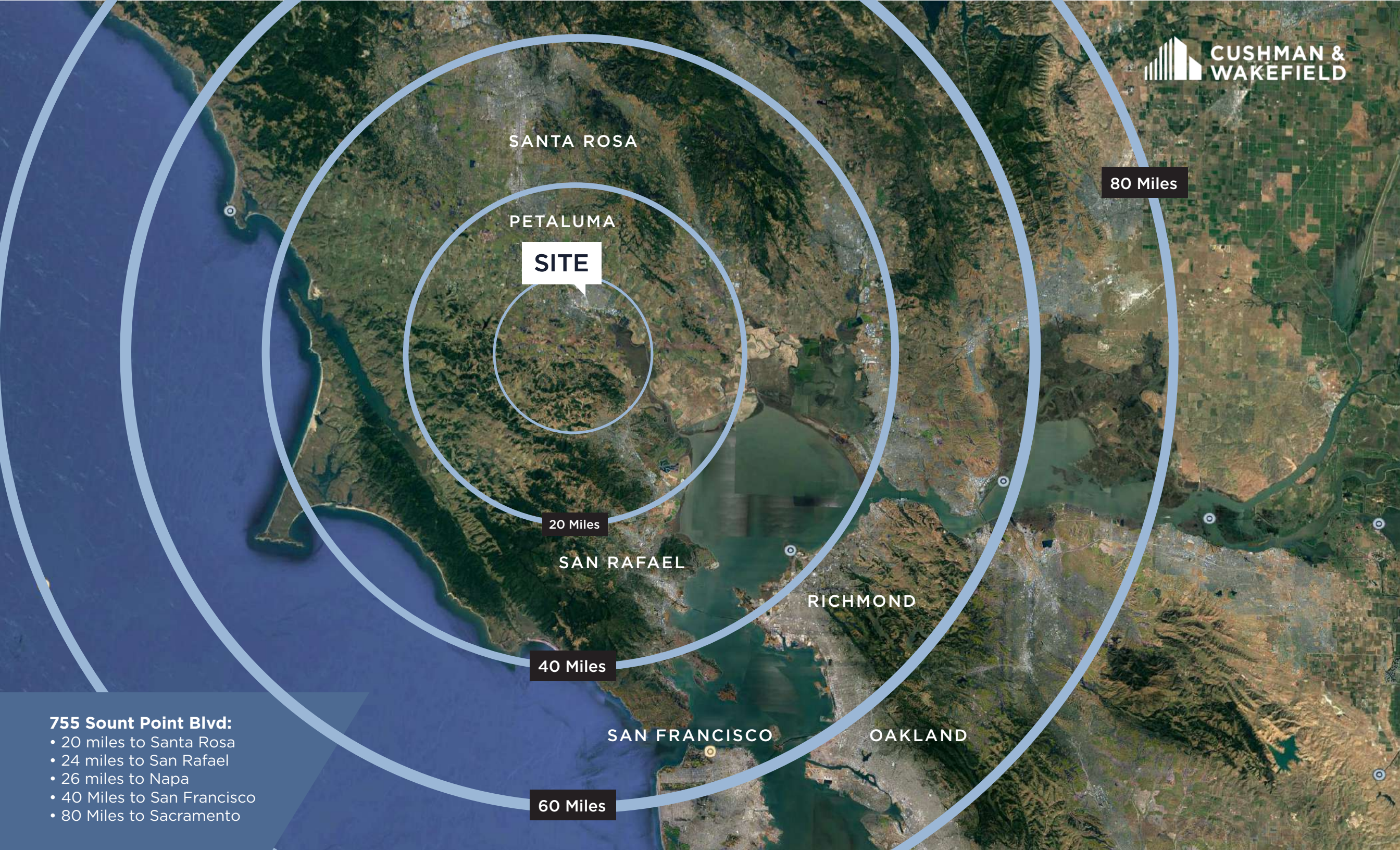
**Brian Foster**  
 Managing Director  
 +1 415 451 2437  
 brian.foster@cushwake.com  
 LIC #01393059

**Steven Leonard**  
 Managing Director  
 +1 415 451 2434  
 steven.leonard@cushwake.com  
 LIC #01255462

**Trevor Buck**  
 Executive Director  
 +1 415 451 2436  
 trevor.buck@cushwake.com  
 LIC #01255462

900 Larkspur Landing Circle  
 Suite 295, Larkspur, CA 94939  
 p: 415 485 0500  
 f: 415 485 1341  
**cushmanwakefield.com**





SANTA ROSA

PETALUMA

**SITE**

80 Miles

20 Miles

SAN RAFAEL

RICHMOND

40 Miles

SAN FRANCISCO

OAKLAND

60 Miles

**755 Sount Point Blvd:**

- 20 miles to Santa Rosa
- 24 miles to San Rafael
- 26 miles to Napa
- 40 Miles to San Francisco
- 80 Miles to Sacramento

INDUSTRIAL BUILDING  
FOR LEASE



755 SOUTH POINT BLVD  
PETALUMA | CA

FREE STANDING WAREHOUSE BUILDING  
UP TO ±89,420 SQUARE FEET

**Brian Foster**  
Managing Director  
+1 415 451 2437  
brian.foster@cushwake.com  
LIC #01393059

**Steven Leonard**  
Managing Director  
+1 415 451 2434  
steven.leonard@cushwake.com  
LIC #01255462

**Trevor Buck**  
Executive Director  
+1 415 451 2436  
trevor.buck@cushwake.com  
LIC #01255462

900 Larkspur Landing Circle  
Suite 295, Larkspur, CA 94939  
p: 415 485 0500  
f: 415 485 1341  
[cushmanwakefield.com](http://cushmanwakefield.com)