

36917-36955 SCHOOLCRAFT
LIVONIA, MICHIGAN

HI-TECH FOR LEASE
1,840 – 2,900 Square Feet Available



**SIGNATURE
ASSOCIATES**
KNOW SIGNATURE | KNOW RESULTS

LIVONIA TECHNOLOGY CENTER



PROPERTY FEATURES

- 1,840 – 2,900 square feet available
- 435 – 1,840 square feet of office
- Complex professionally managed by Signature Associates
- Located just east of Newburgh Road and with easy access to I-96 & I-275
- Multiple office/shop configurations available and units have been recently renovated or can be finished to suit
- Aggressive lease rates



For more information, please contact:

JASON KELMIGIAN
(248) 359 0629

jkelmigian@signatureassociates.com

CHRIS CALVANO
(248) 359 0610

ccalvano@signatureassociates.com

SIGNATURE ASSOCIATES
One Towne Square, Suite 1200
Southfield, MI 48076
www.signatureassociates.com

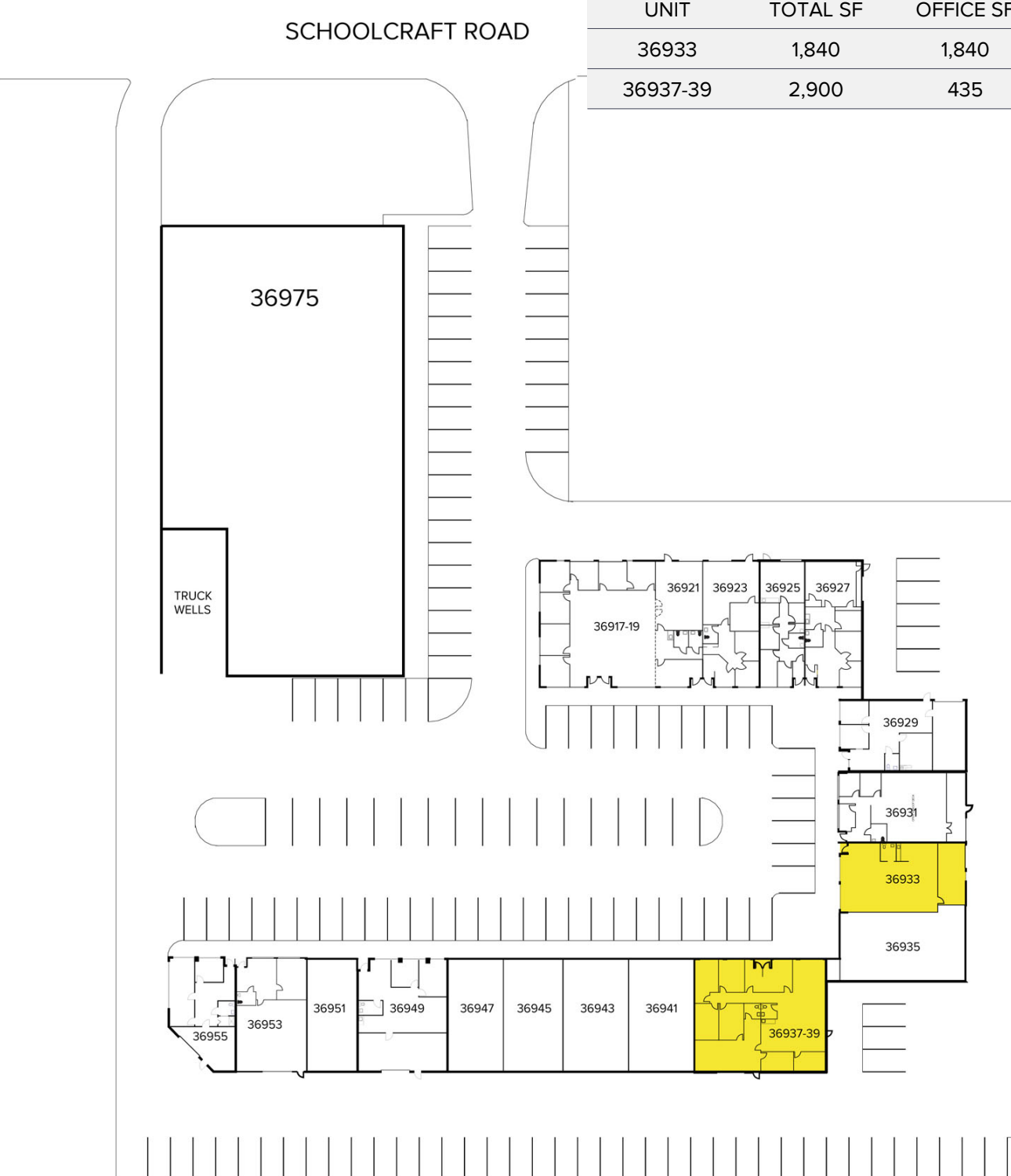
36917 - 36955 Schoolcraft Road - Livonia, Michigan

Hi-Tech For Lease

1,840 – 2,900
Square Feet
AVAILABLE

Site Plan

| AVAILABILITY | | | |
|--------------|----------|-----------|-----------|
| UNIT | TOTAL SF | OFFICE SF | RATE |
| 36933 | 1,840 | 1,840 | \$9.45 MG |
| 36937-39 | 2,900 | 435 | \$9.45 MG |



For more information, please contact:

JASON KELMIGIAN

(248) 359 0629

jkelmigian@signatureassociates.com

CHRIS CALVANO

(248) 359 0610

ccalvano@signatureassociates.com

SIGNATURE ASSOCIATES

One Towne Square, Suite 1200

Southfield, MI 48076

www.signatureassociates.com

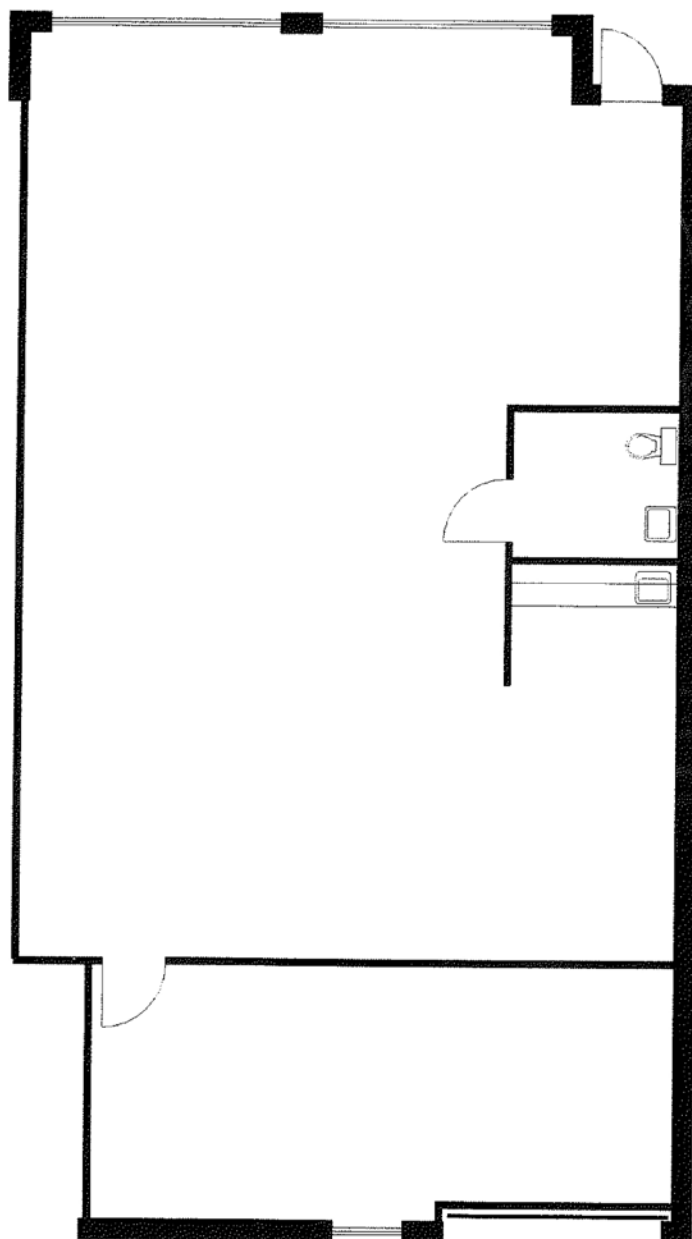
36917 - 36955 Schoolcraft Road - Livonia, Michigan

Hi-Tech For Lease

1,840 – 2,900
Square Feet
AVAILABLE

Floor Plan

| AVAILABILITY | | | |
|--------------|----------|-----------|-----------|
| UNIT | TOTAL SF | OFFICE SF | RATE |
| 36933 | 1,840 | 1,840 | \$9.45 MG |



For more information, please contact:

JASON KELMIGIAN

(248) 359 0629

jkelmigian@signatureassociates.com

CHRIS CALVANO

(248) 359 0610

ccalvano@signatureassociates.com

SIGNATURE ASSOCIATES

One Towne Square, Suite 1200

Southfield, MI 48076

www.signatureassociates.com

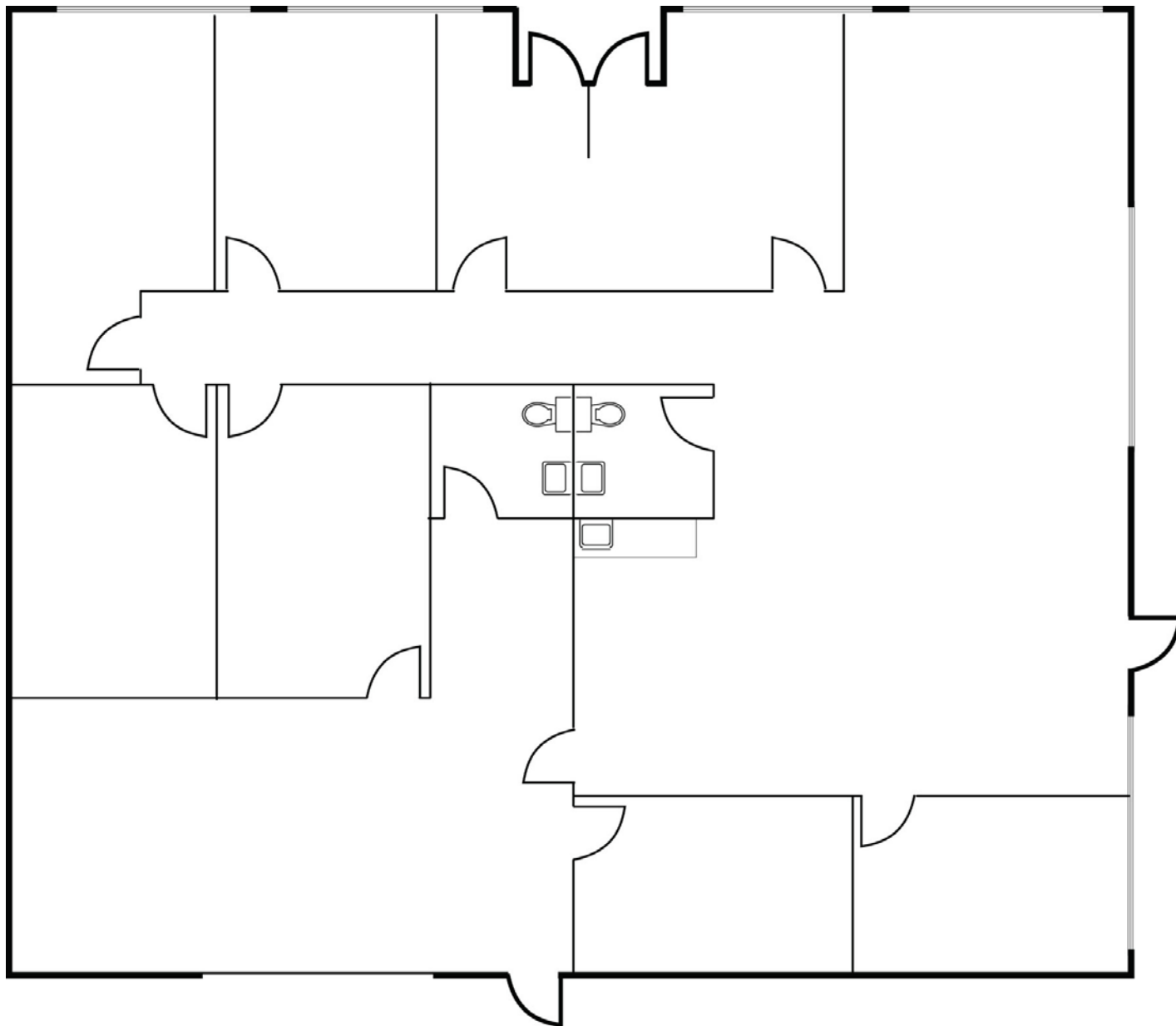
36917 - 36955 Schoolcraft Road - Livonia, Michigan

Hi-Tech For Lease

1,840 – 2,900
Square Feet
AVAILABLE

Floor Plan

| AVAILABILITY | | | |
|--------------|----------|-----------|-----------|
| UNIT | TOTAL SF | OFFICE SF | RATE |
| 36937-39 | 2,900 | 435 | \$9.45 MG |



For more information, please contact:

JASON KELMIGIAN

(248) 359 0629

jkelmigian@signatureassociates.com

CHRIS CALVANO

(248) 359 0610

ccalvano@signatureassociates.com

SIGNATURE ASSOCIATES

One Towne Square, Suite 1200

Southfield, MI 48076

www.signatureassociates.com