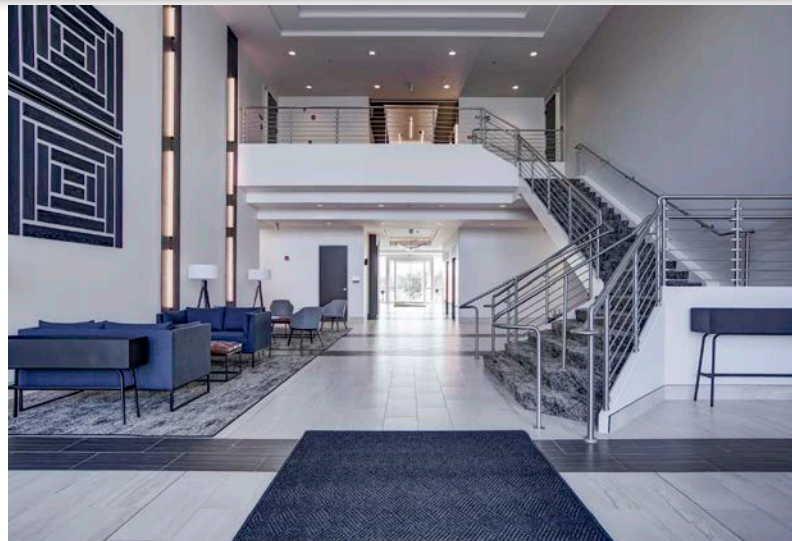




Westport Capital Partners LLC

INOVA

CORPORATE CENTER



W. Ryan Stout
303.813.6448
ryan.stout@cushwake.com

Nathan J. Bradley
303.813.6444
nate.bradley@cushwake.com

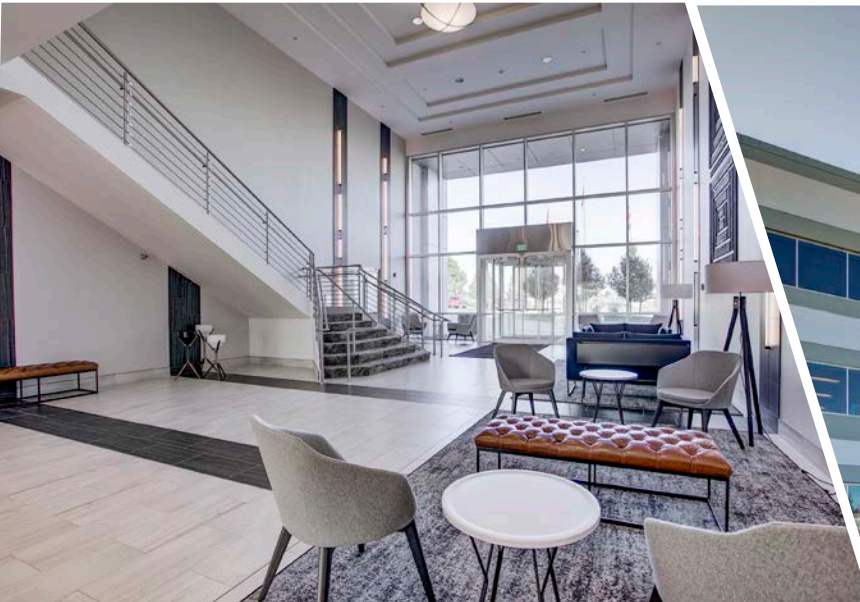
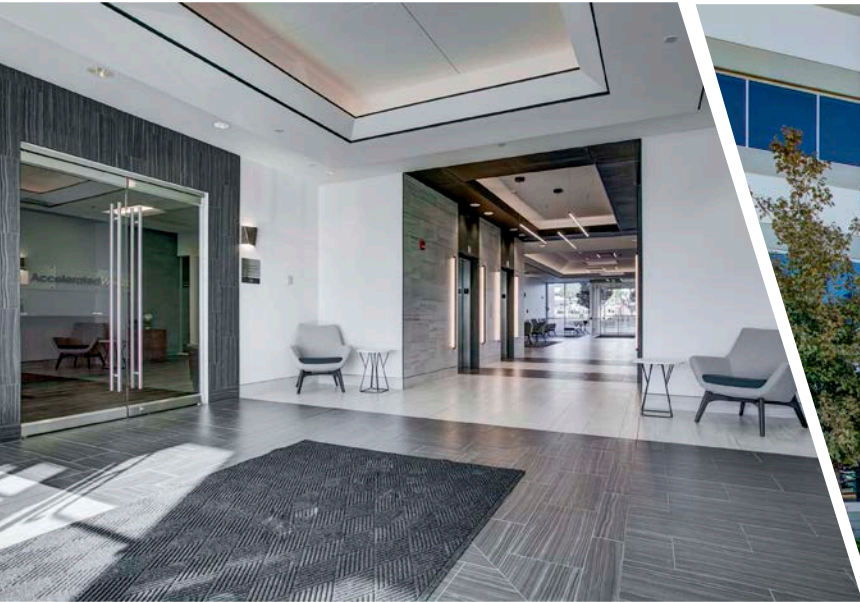
Zachary T. Williams
303.813.6474
zach.williams@cushwake.com

10700 & 10800 E GEDDES AVE | ENGLEWOOD, CO 80112



INOVA

CORPORATE CENTER



**2019 Lobby
Renovations &
Exterior Re-Clad
Now Complete!**





Westport Capital Partners LLC

10700 E GEDDES

Year Built:	2001
Building SF:	93,601 SF
Typical Floor Plate:	31,200 SF
Stories:	3
Parking:	5 : 1,000 Free Surface Parking

10800 E GEDDES

Year Built:	2000
Building SF:	92,356 SF
Typical Floor Plate:	32,690 SF
Stories:	3
Parking:	5 : 1,000 Free Surface Parking



NEW Fitness Facility!



INCREDIBLE INFRASTRUCTURE!

Signage Opportunities

Fiber Optic Capability

Showers & Lockers

Redundant Power at 21 Watts/SF

Large Flexible Floor Plates

LEED Gold Certified & Energy Star Labeled

Cushman & Wakefield Copyright 2019. No warranty or representation, express or implied, is made to the accuracy or completeness of the information contained herein, and same is submitted subject to errors, omissions, change of price, rental or other conditions, withdrawal without notice, and to any special listing conditions imposed by the property owner(s). As applicable, we make no representation as to the condition of the property (or properties) in question.

INOVA

CORPORATE CENTER



10700 & 10800 E GEDDES AVE | ENGLEWOOD, CO 80112