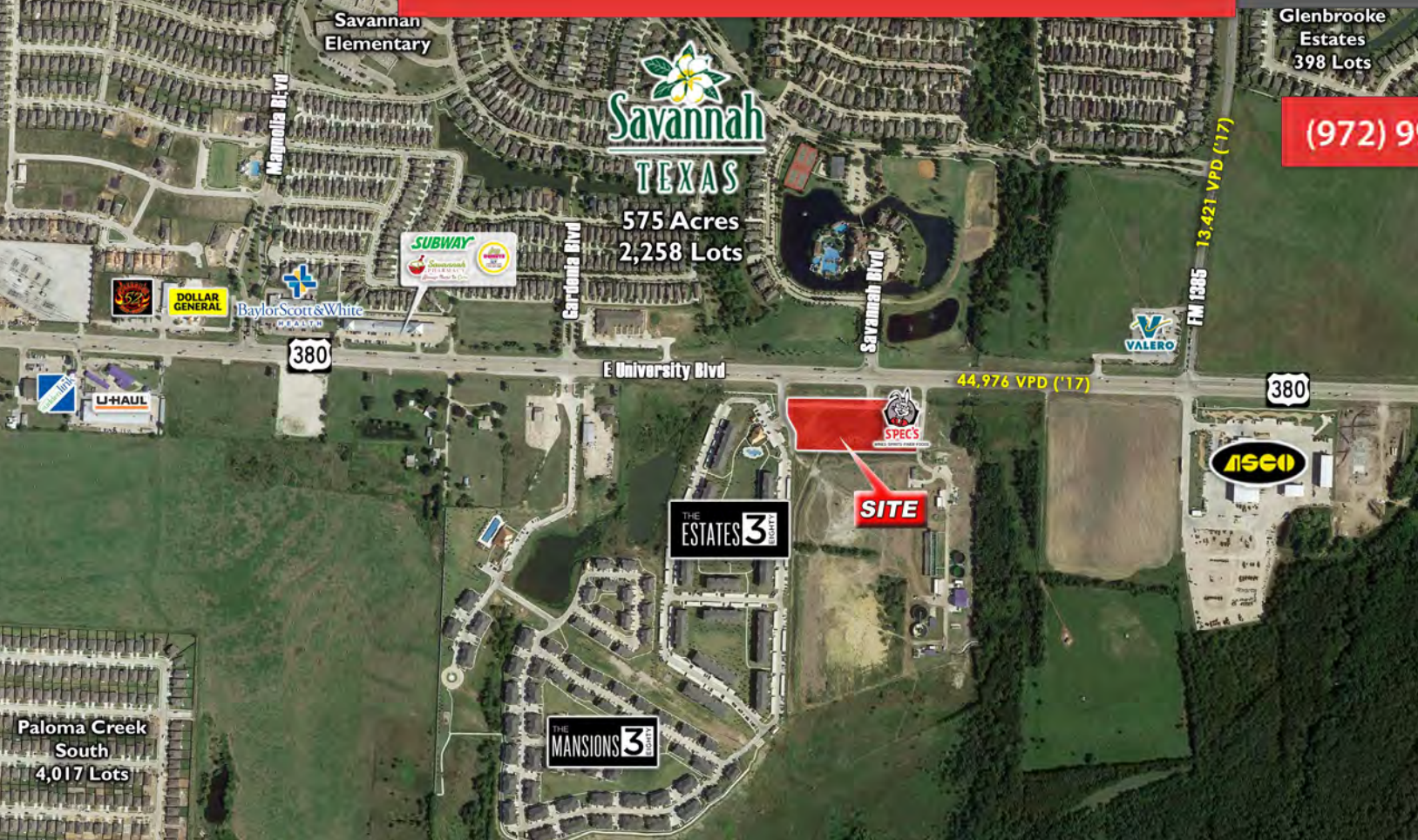


Little Elm Texas, 76227

E University/US 380 accross from Savannah

FOR LEASE



(972) 991-9590



WHAT'S NEARBY



Little Elm Pad Sites

SH 380 & Savannah Blvd in Little Elm, Texas 76227

MARK COHEN
Mark@CenterPointCP.com
(972) 991-9590 x26

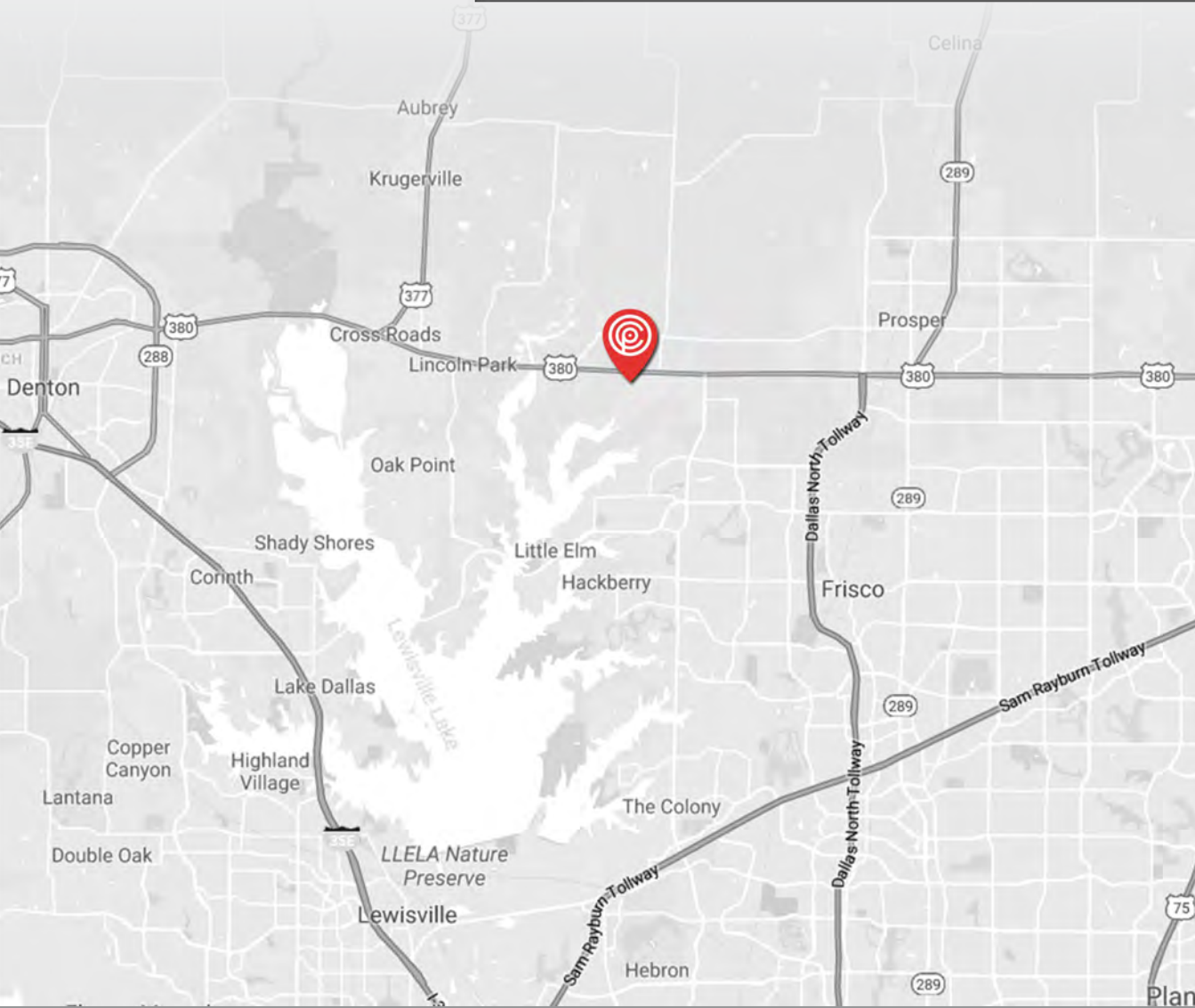
BILL WASTOSKIE
Bill@CenterPointCP.com
(972) 754-0720

5330 Alpha Rd Ste 200
Dallas, Texas 75240
(972) 991-9590 (office)

The information contained herein was obtained from sources deemed reliable; however, no guarantees, warranties or representations as to the completeness or accuracy thereof. The presentation of this real estate information is subject to errors; omissions; change of price; prior sale or lease; or withdrawal without notice.



Little Elm Pad Sites SH 380 at Savannah Blvd



AVAILABILITY

Pad Sites Available

PRICING

Call for Rates


TRAFFIC COUNTS

E University / SH 380: 44,976 VPD

FM 1385: 13,421 VPD

(TXDOT 2017)

PROPERTY DETAILS

-  **SPEC'S** Anchored!
- Located on the south side of US 380 / E University Dr at Gardenia Dr in north Little Elm, Texas
- Directly across from Savannah, a 575 acre master-planned community
- Easy access and excellent visibility with frontage on 380
- Conveniently located just west of Prosper and south of Aubrey on the main thoroughfare between McKinney and Denton

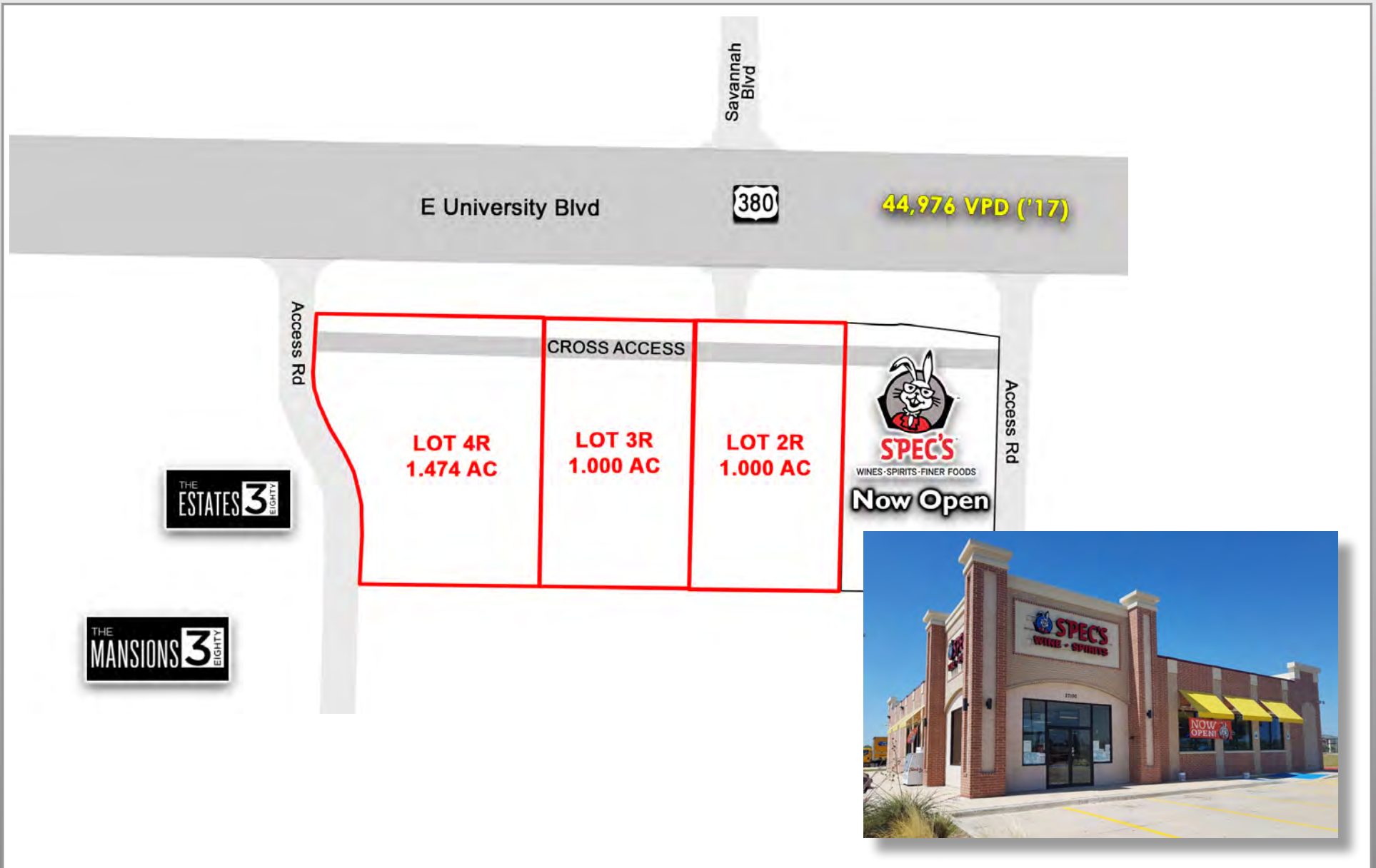
DEMOGRAPHIC SNAPSHOT

	1-mile	3-mile	5-mile
2018 Population	12,294	54,181	124,048
5 Yr Projected Growth	49.95%	32.45%	25.85%
Households	4,497	16,907	38,238
Average HH Income	\$99,480	\$108,151	\$115,158

(972) 991-9590



Little Elm Pad Sites SH 380 at Savannah Blvd



(972) 991-9590



