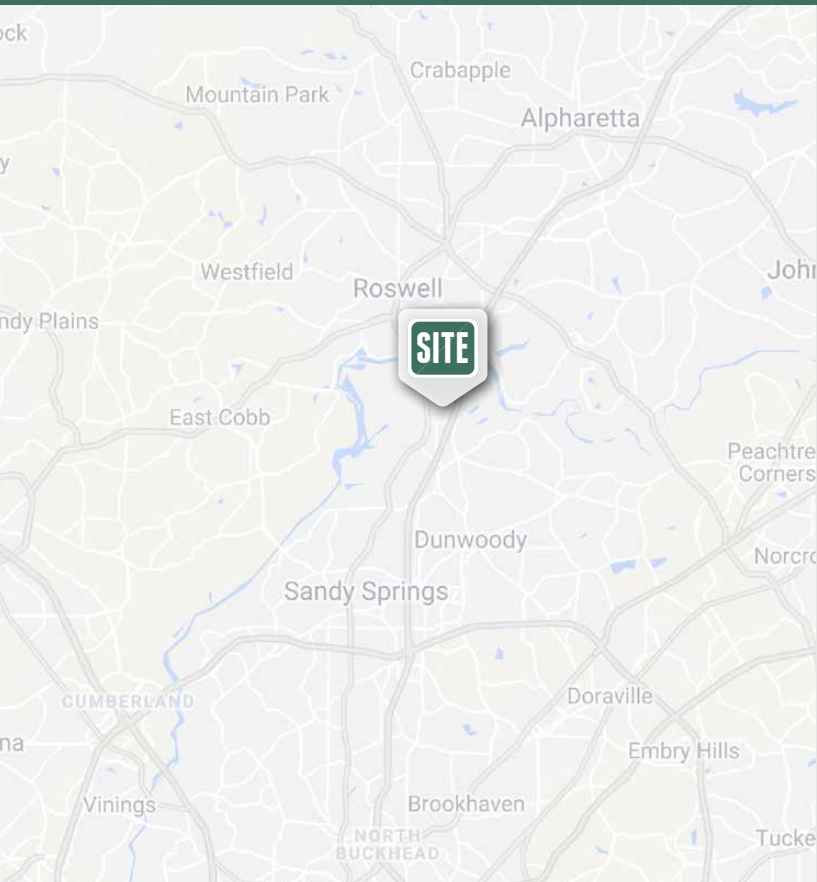


FOR LEASE

**575-12,358 SF**  
Office Space Available

## NORTHRIDGE PAVILION OFFICE PARK

1301 & 1303 Hightower Trail | Sandy Springs, Georgia 30350



### NOW LEASING

575-12,358 SF available

Extra incentives for tenants and brokers

1301 building features 46,000 SF on 3 floors with 4.3/1,000 SF parking (more possible)

16,000 SF available on 3rd floor in adjacent building

Each floor will subdivide (1,100-16,000 SF)

Move-in condition suites available

### RENOVATIONS

Renovated common areas

Outdoor gathering spots

Generous tenant improvement packages

New exterior coming June 2019

### LOCATION

Immediate access to newly improved GA-400 interchange via Northridge Rd/Dunwoody Place

Sandy Springs City Center - 5 miles south;

Roswell's Canton Street - 3 miles north;

North Point/Avalon - 8 miles north

Minutes to Central Perimeter amenities

Short distance to Dunwoody, North Fulton & East Cobb suburbs

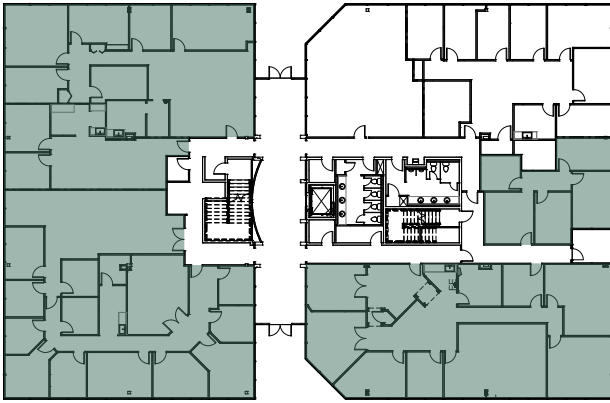
# NORTHRIDGE PAVILION OFFICE PARK

FOR LEASE

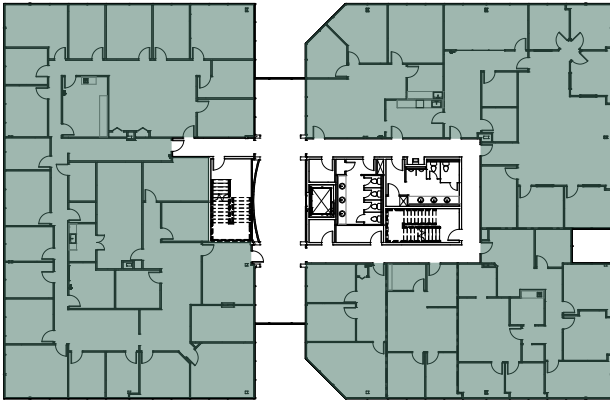
**575-12,358 SF**  
Office Space Available

## 1301 HIGHTOWER TRAIL

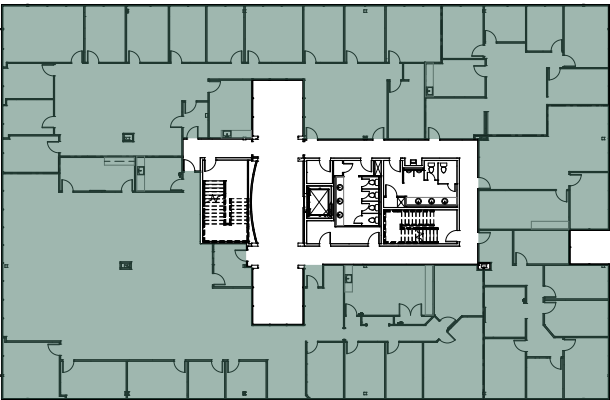
FLOOR 1



FLOOR 2

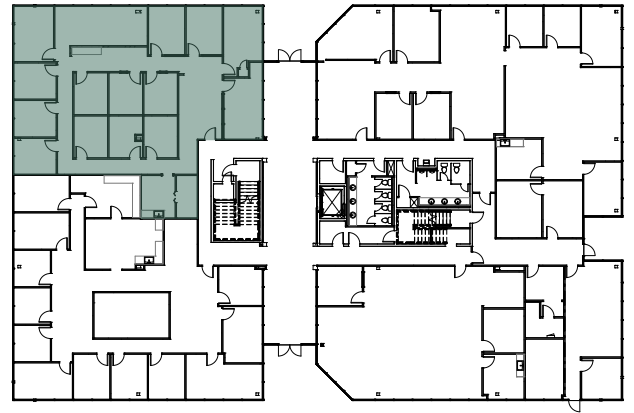


FLOOR 3

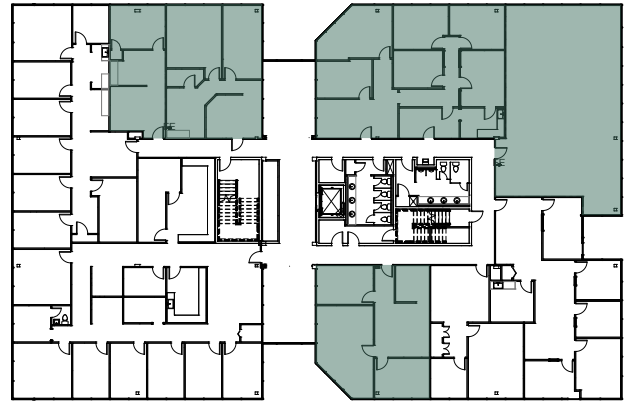


## 1303 HIGHTOWER TRAIL

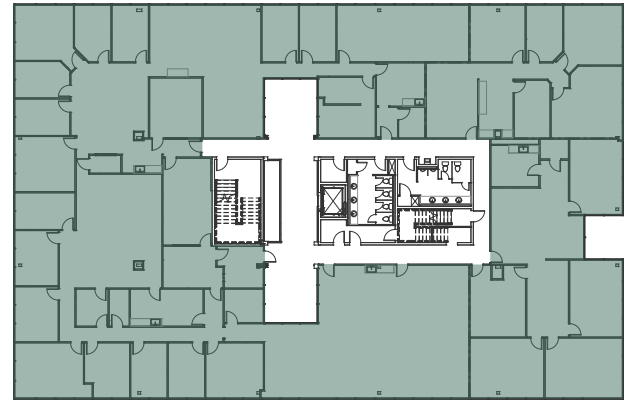
FLOOR 1



FLOOR 2



FLOOR 3



 Available Space