



- ❑ 1,100 – 4,400 SQUARE FEET AVAILABLE
- ❑ AMPLE PARKING
- ❑ STUNNING ARCHITECTURE
- ❑ EXCELLENT LOCATION
- ❑ EASY ACCESS

LEASE RATE: \$20/SF MODIFIED GROSS

OFFICE SPACE *for* LEASE

NEW CONSTRUCTION

Incredible opportunity to lease new office space in the sought after “**The Commons Of Hawthorne Woods**”. This impeccably maintained office park features picturesque buildings, manicured grounds and is conveniently located at the intersection of Old Midlothian Road and McHenry Road.

With convenience and easy access, this excellent location is ideal for any professional or medical user. A MUST SEE!

For more information or to schedule a tour, contact:

Ron Roberti

Direct: (847) 649-2666

RRoberti@LPcommercial.com

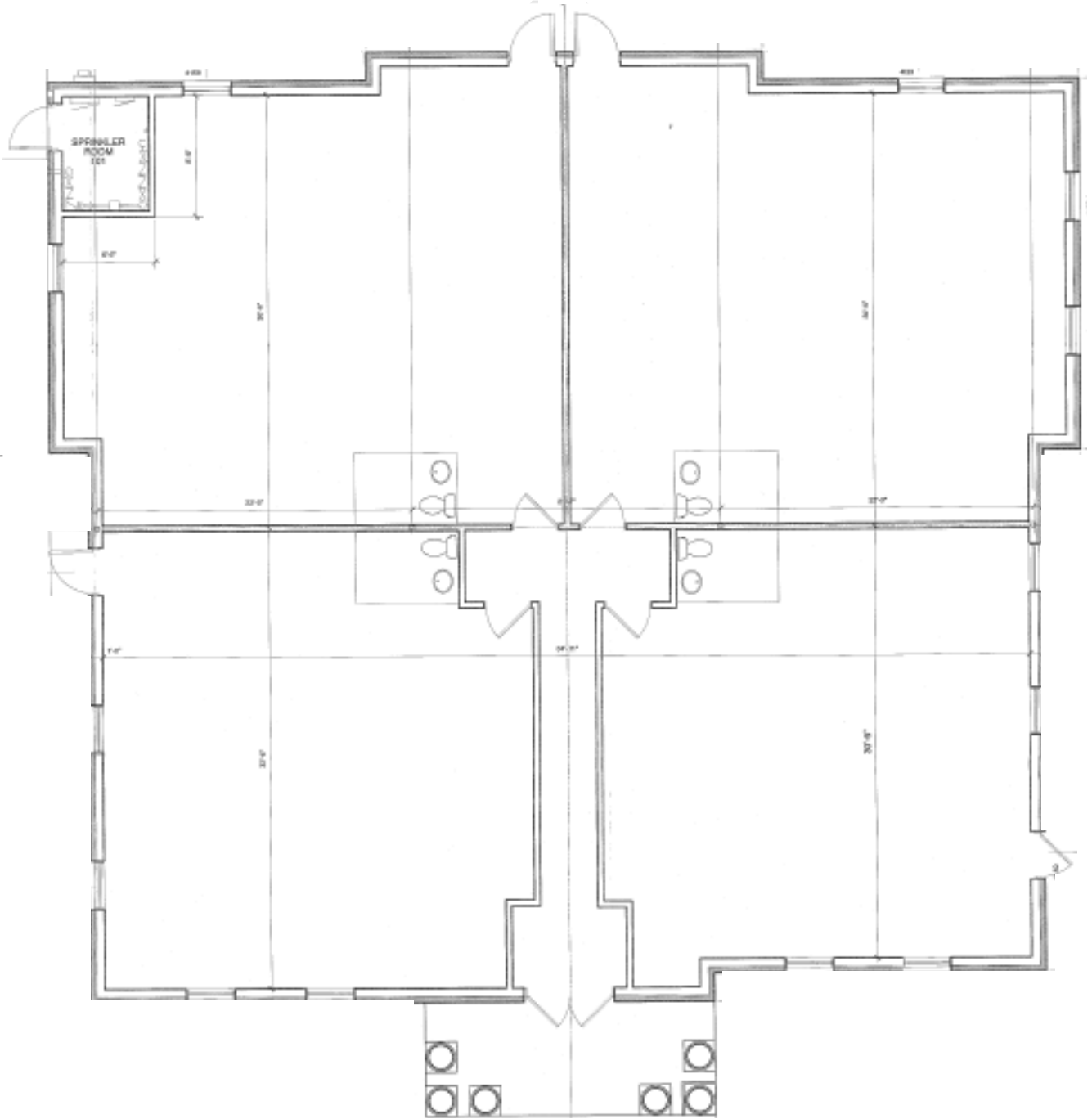


LANDMARK PARTNERS
COMMERCIAL REAL ESTATE

1699 E. Woodfield Road, Suite 202 | Schaumburg, IL 60192

P: (847) 649-2660 | www.LPcommercial.com

FLOOR PLAN



BUILDING ELEVATION



AERIAL MAP



AREA BUSINESSES



For more information or to schedule a tour, contact:

Ron Roberti

Direct: (847) 649-2666

RRoberti@LPcommercial.com



1699 E. Woodfield Road, Suite 202 | Schaumburg, IL 60192
P: (847) 649-2660 | www.LPcommercial.com

D I S C L A I M E R & A G E N C Y D I S C L O S U R E

Disclaimer: The information contained in the memorandum has been obtained from sources we believe to be reliable; however, Landmark Partners Commercial Real Estate, LLC, nor any of their officers, employees, or agents, has not verified, and will not verify, any of the information contained herein and makes no warranty or representation whatsoever regarding the accuracy or completeness of the information provided. This memorandum does not purport to be all-inclusive or to contain all the information which prospective lessee may desire. References to square footage are approximate. No legal liability is assumed or shall be implied with respect thereto.

The owner expressly reserves the right at its sole discretion to reject any or all proposals or expressions of interest in the property and to terminate discussions with any party at any time with or without notice.

Agency Disclosure: Ron Roberti of Landmark Partners Commercial Real Estate, LLC ("Broker") is an Illinois Licensed Real Estate Broker and is acting solely on behalf of the Seller of the real estate. Any information given to the Broker may be disclosed to the Owner/Landlord.

For more information contact:

Ron Roberti

Direct: (847) 649-2666

RRoberti@LPcommercial.com



1699 E. Woodfield Road, Suite 202 | Schaumburg, IL 60192
P: (847) 649-2660 | www.LPcommercial.com