

FOR SALE

323 WEST BROADWAY

Louisville, KY 40202

OFFICE BUILDING FOR SALE 55,896 SF

PROPERTY FEATURES

- 10-story building with floors 1-8 for sale
- Floors 9 & 10 contain 10 separately owned residential condominiums
- Formerly known as the Brown Office Building
- Located adjacent to the iconic Brown Hotel and Brown Theatre on Broadway between 3rd and 4th Streets
- The immediate area includes office, hotels, apartments, restaurants and retail, with Kindred Healthcare's new headquarters campus one block to the west on 4th street
- Connected to the PARC-operated, 494-car, 5-story Brown Hotel Garage via 2nd floor pedway



ARTSPACE BUILDING

For more information, please contact:

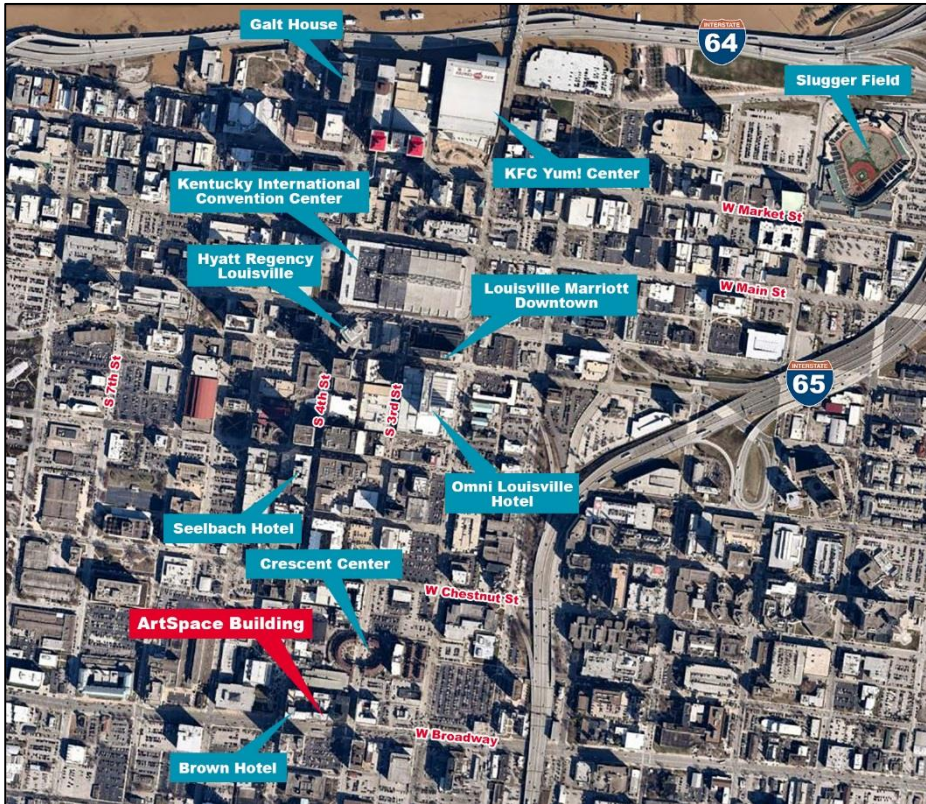
SAM ENGLISH, CFA
Senior Director
+1 502 589 5150 ext. 244
senglish@commercialkentucky.com

E.P. SCHERER
Senior Director
+1 502 589 5150 ext. 234
epscherer@commercialkentucky.com

PHIL SCHERER
Chairman
+1 502 589 5150
philscherer@commercialkentucky.com

333 E. Main Street, Suite 510
Louisville, KY 40202
phone: +1 502 589 5150
www.commercialkentucky.com

FOR SALE
323 WEST BROADWAY
Louisville, KY 40202



CBD Location Map



Aerial Map

For more information, please contact:

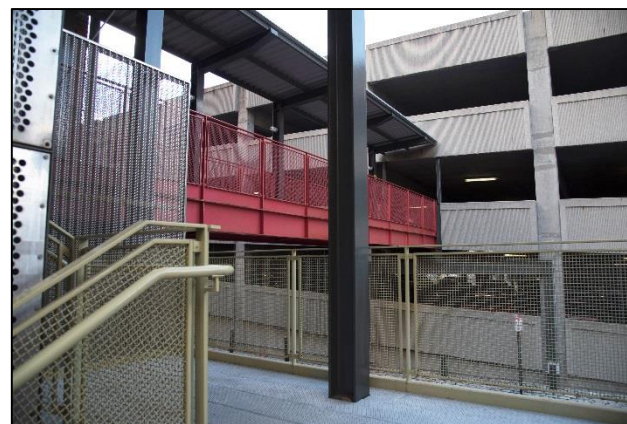
SAM ENGLISH, CFA
Senior Director
+1 502 589 5150 ext. 244
senglish@commercialkentucky.com

E.P. SCHERER
Senior Director
+1 502 589 5150 ext. 234
epscherer@commercialkentucky.com

PHIL SCHERER
Chairman
+1 502 589 5150
philscherer@commercialkentucky.com

333 E. Main Street, Suite 510
Louisville, KY 40202
phone: +1 502 589 5150
www.commercialkentucky.com

FOR SALE
323 WEST BROADWAY
Louisville, KY 40202



For more information, please contact:

SAM ENGLISH, CFA
Senior Director
+1 502 589 5150 ext. 244
senglish@commercialkentucky.com

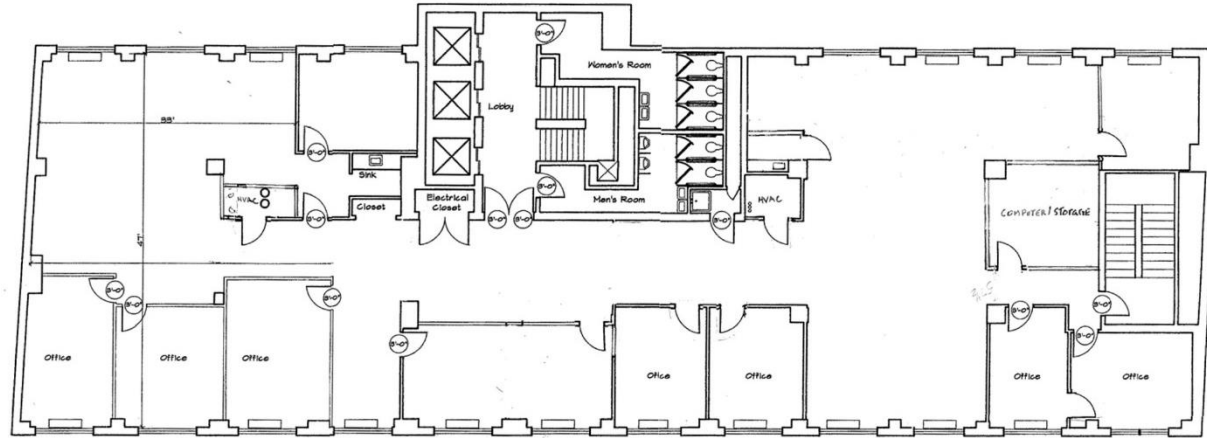
E.P. SCHERER
Senior Director
+1 502 589 5150 ext. 234
epscherer@commercialkentucky.com

PHIL SCHERER
Chairman
+1 502 589 5150
philscherer@commercialkentucky.com

333 E. Main Street, Suite 510
Louisville, KY 40202
phone: +1 502 589 5150
www.commercialkentucky.com

FOR SALE
323 WEST BROADWAY
Louisville, KY 40202

Typical Floor Plan



**Condominium
Floor Plans**

For more information, please contact:

SAM ENGLISH, CFA
Senior Director
+1 502 589 5150 ext. 244
senglish@commercialkentucky.com

E.P. SCHERER
Senior Director
+1 502 589 5150 ext. 234
epscherer@commercialkentucky.com

PHIL SCHERER
Chairman
+1 502 589 5150
philscherer@commercialkentucky.com

333 E. Main Street, Suite 510
Louisville, KY 40202
phone: +1 502 589 5150
www.commercialkentucky.com