



Office For Lease

1300 E Missouri Avenue
Phoenix, Arizona 85014

EXCLUSIVELY LISTED BY:

Troy Giammarco

+1 602 393 6693

troy.giammarco@naihonorizon.com

NAI Horizon

Joe Pequeno

+1 602 393 6602

joe.pequeno@naihonorizon.com

The Property

Building Size 13,369 SF

Building Class B

Zoning C-O

Year Built 1986

Cross Streets 13th Street & Missouri Avenue

Total Space Available ±1,316 SF

Suites Available 200: ±1,316 SF

Lease Rate \$19/SF, FSG

Property Amenities & **Highlights**

- Well maintained B+ property
- Financial stable ownership
- Above standard finished suites
- Move-in ready
- Strong area demographics
- Centrally located
- Minutes to I-17, Loop 101 & SR-51
- Minutes to Scottsdale, Paradise Valley, Arcadia and Midtown
- 20 minutes to Sky Harbor
- Close to countless retail and local amenities



Property Photos



Property Photos

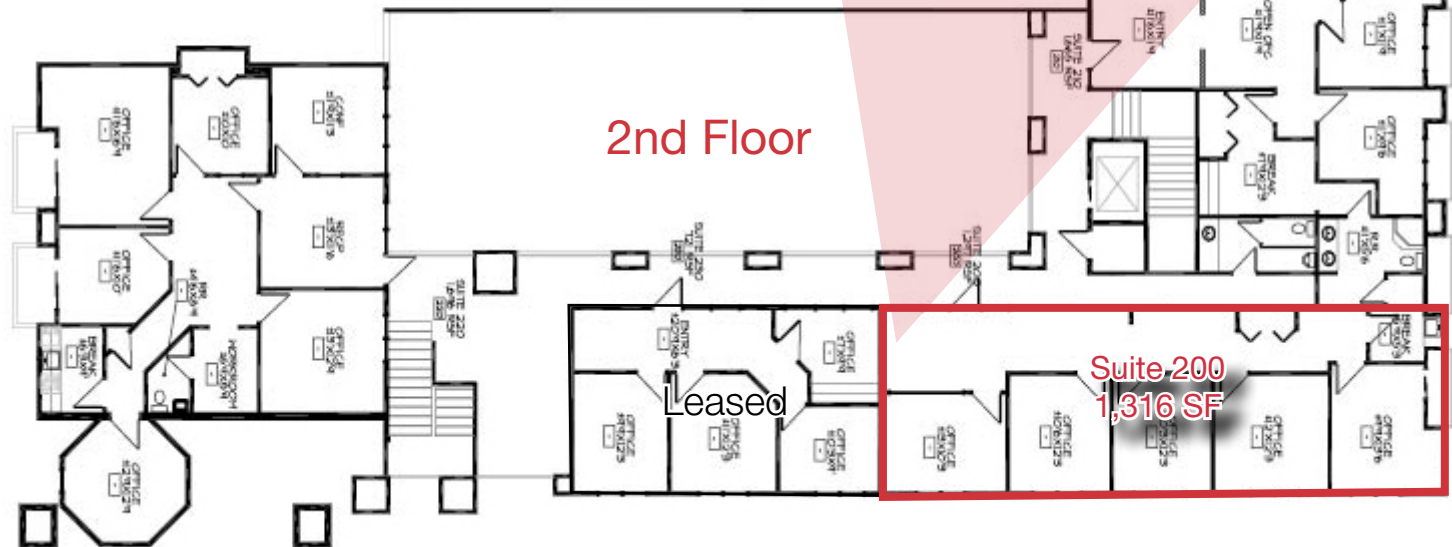
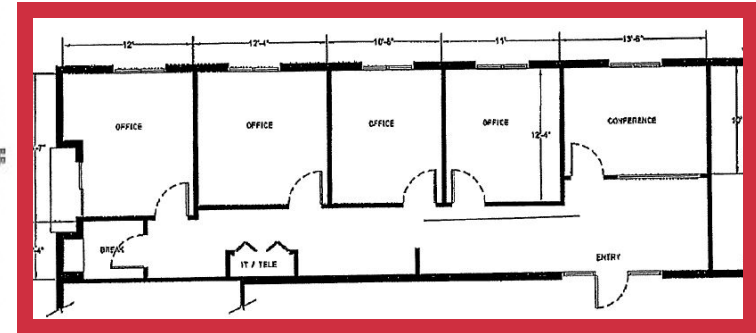




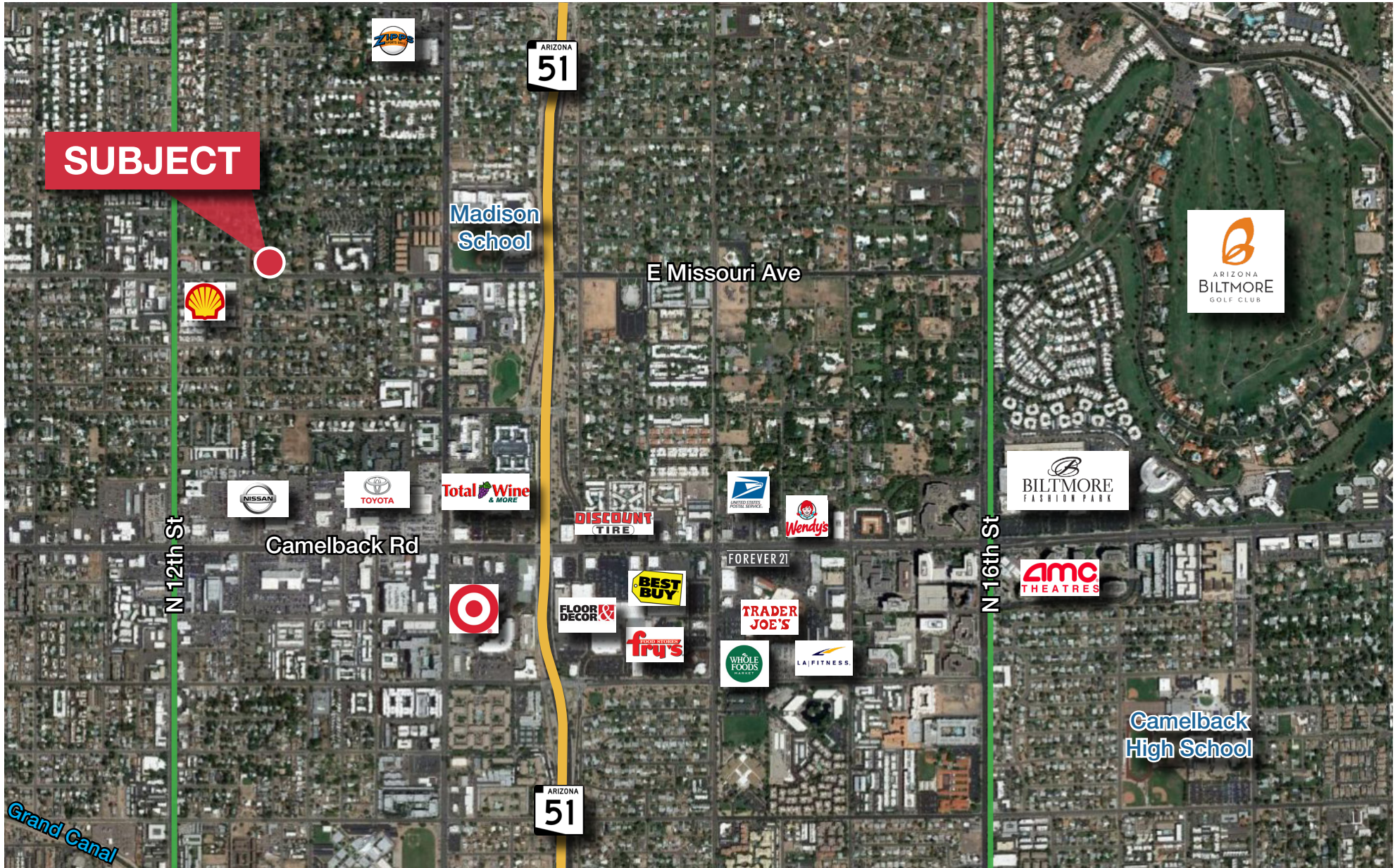
Floor Plans



Suite 200:



Property **Aerial**



1300 E Missouri Avenue

Phoenix, AZ 85014

For Lease

For More Information Contact:

Troy Giammarco
troy.giammarco@naihorizon.com
602 393 6693

Joe Pequeno
joe.pequeno@naihorizon.com
602 393 6602

NAIHorizon

2944 N 44th Street, Suite 200
Phoenix, AZ 85018
602 955 4000
naihorizon.com