

For Sale
10,073 SF Office Condo

Mallard Building

1244 West Chester Pike
West Chester, PA 19380



Property Highlights

- \$1.1 MM
- Convenient access to Route 202
- 3 miles from downtown West Chester
- 1st and 2nd floor space
- Large open floor plan
- Professional office environment
- Excellent owner/user opportunity
- Great parking ratio

For more information, please contact:

NAI Geis Realty
Group, Inc.

W. Thomas Hummel, Jr.
Executive Vice President
thummel@geisrealty.com
(215) 568-2505

Daniel J. Moller
Vice President
dmoller@geisrealty.com
(215) 701-0722

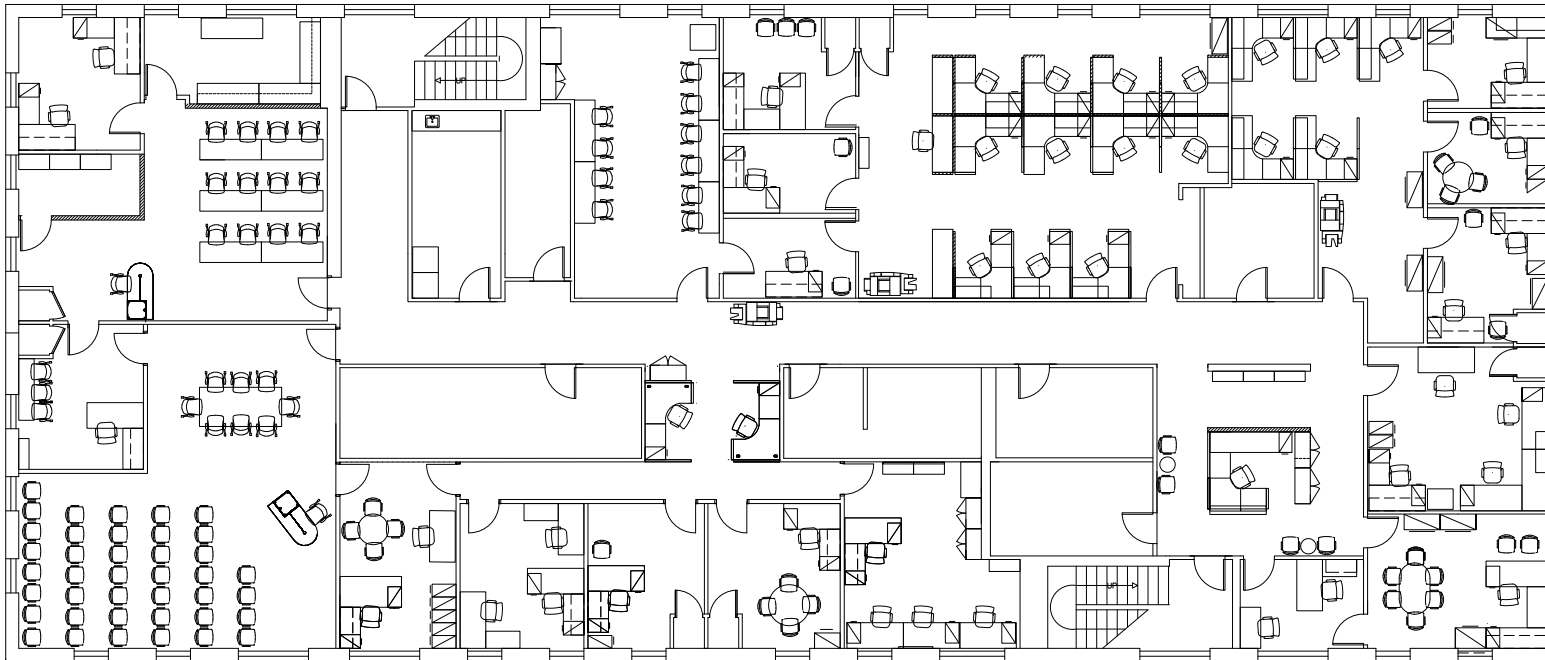
Louis Tonon
Associate
ltonon@geisrealty.com
(215) 568-1590

Duane Morris Plaza
30 South 17th Street, Suite 210, Philadelphia, PA 19103
(215) 568-7222 Tel // (215) 568-5043 Fax
naigeis.com

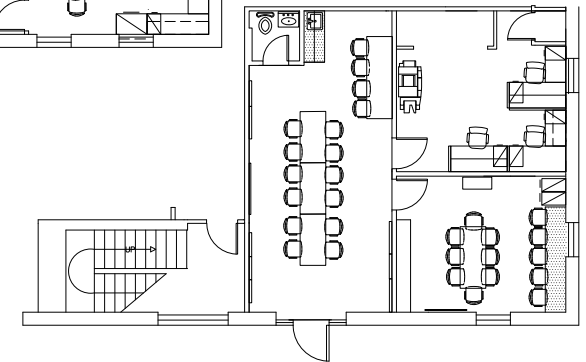
For Sale
10,073 SF Office Condo

Mallard Building

1244 West Chester Pike
West Chester, PA 19380



1 SECOND FLOOR FURNITURE PLAN
10'-0" x 10'-0"
10,000 Square Feet



2 FIRST FLOOR FURNITURE PLAN
10'-0" x 10'-0"

For more information, please contact:



W. Thomas Hummel, Jr.
Executive Vice President
thummel@geisrealty.com
(215) 568-2505

Daniel J. Moller
Vice President
dmoller@geisrealty.com
(215) 701-0722

Louis Tonon
Associate
ltonon@geisrealty.com
(215) 568-1590

Duane Morris Plaza
30 South 17th Street, Suite 210, Philadelphia, PA 19103
(215) 568-7222 Tel // (215) 568-5043 Fax
naigeis.com

For Sale
10,073 SF Office Condo

Mallard Building

1244 West Chester Pike
West Chester, PA 19380



Annual Average
Daily Traffic:
28,581

For more information, please contact:

NAI Geis Realty
Group, Inc.

W. Thomas Hummel, Jr.
Executive Vice President
thummel@geisrealty.com
(215) 568-2505

Daniel J. Moller
Vice President
dmoller@geisrealty.com
(215) 701-0722

Louis Tonon
Associate
ltonon@geisrealty.com
(215) 568-1590

Duane Morris Plaza
30 South 17th Street, Suite 210, Philadelphia, PA 19103
(215) 568-7222 Tel // (215) 568-5043 Fax
naigeis.com