

101 Alwine Road - South Butler Commons

Saxonburg, PA 16056



Building **Size**

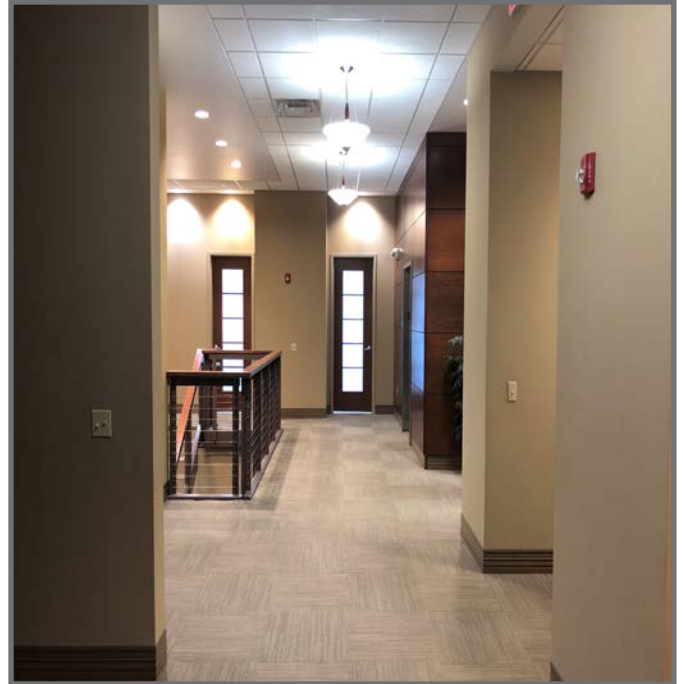
23,236 SF

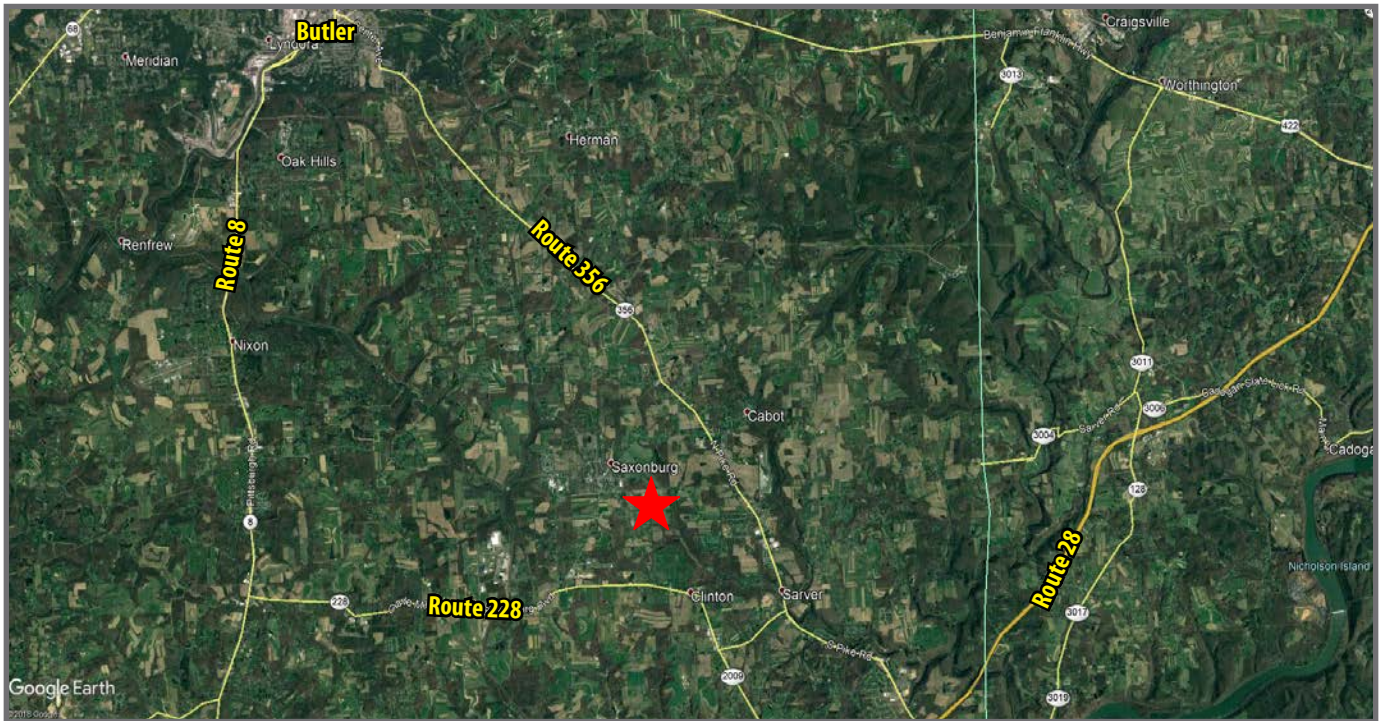
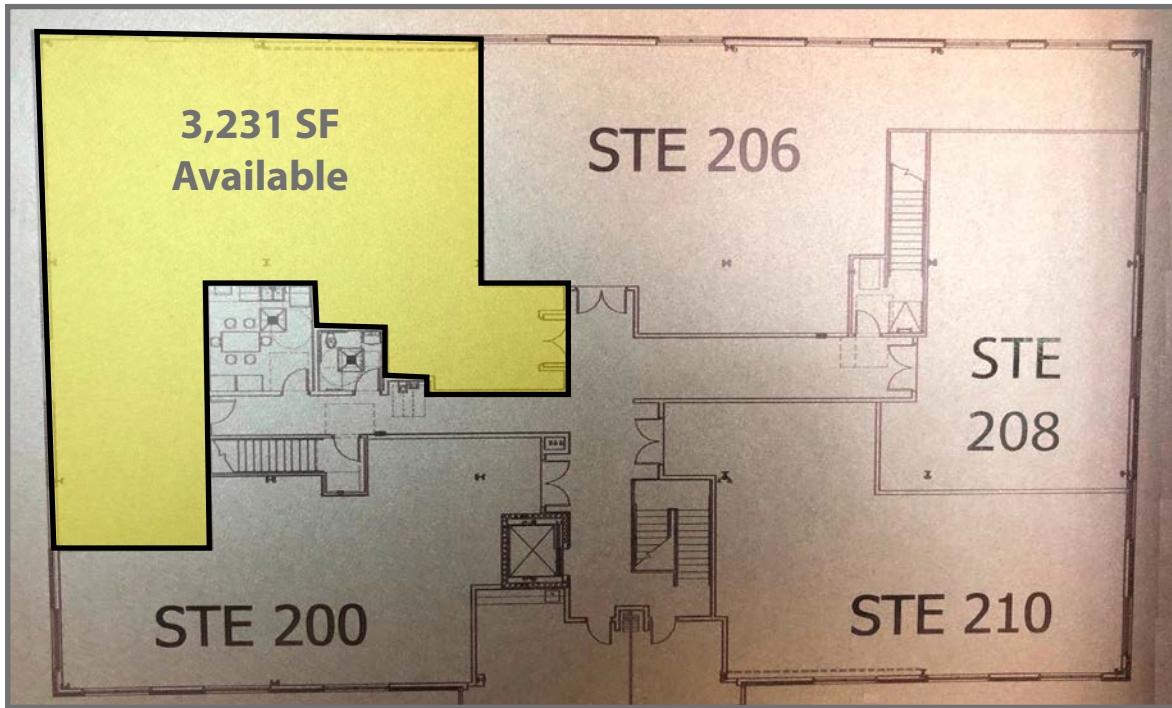
Available **Premises**

3,231 SF - 2nd Floor

Property **Highlights**

- Two story Class "A" medical office building
- ADA compliant and well maintained
- Suitable for office user
- Free abundant on-site parking
- Prominent monument signage available
- Suites can be delivered turn-key
- Located 15 minutes from PA Route 28





For more information please contact:

Jeffrey A. Deitrick, SIOR
Executive Vice President

Oxford Realty Services, Inc.
412.261.0200, ext 3473
jdeitrick@oxfordrealtyservices.com

Taylor N. Iaboni
Associate

Oxford Realty Services, Inc.
412.261.0200, ext 3493
tiaboni@oxfordrealtyservices.com

OXFORD

REALTY SERVICES, INC.

2545 Railroad Street - Suite 300
Pittsburgh, PA 15222
www.oxfordrealtyservices.com

Although all information furnished regarding property for sale, rental or financing is from sources deemed reliable, such information has not been verified, and no express representation is made nor is any to be implied as to the accuracy thereof, and it is submitted subject to errors, omissions, change of price, rental or other conditions, prior sale, lease or financing, or withdrawal without notice. Rental terms and all dimensions are approximate and specifications are subject to change without notice. Oxford Realty Services, Inc., an independent real estate services company.