

# BOYER BDO OFFICE BUILDING

1150 South Depot Drive, Ogden, Utah 84401



# FOR LEASE

\$13.25 PSF

## PROPERTY FEATURES

- 1,112 – 3,881 SF Available
- 25,000 Square Feet Office Building
- \$6.75 PSF NNN Fee
- In-suite Janitorial Service Included
- Fiber Products Available
- One Mile From Interstate-15 on 12th Street

FOR MORE  
INFORMATION  
CONTACT

CHRIS FALK, CCIM, SIOR  
801.416.1024  
chris.falk@ngkf.com

BRAXTON WILLIE, CCIM  
801.416.1050  
braxton.willie@ngkf.com



1755 East 1450 South, Suite 100 | Clearfield, Utah 84015 | 801.927.2000 | [www.ngacres.com](http://www.ngacres.com)

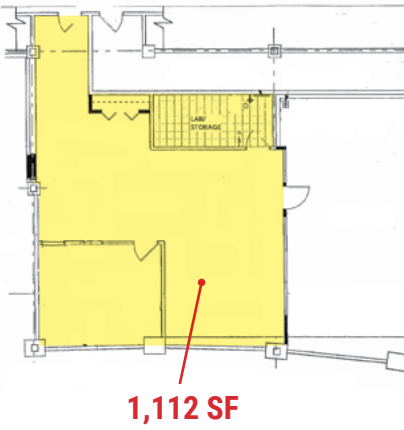
This document has been prepared by Newmark Knight Frank for advertising and general information purposes only. While the information contained herein has been obtained from what are believed to be reliable sources, the same has not been verified for accuracy or completeness. Newmark Knight Frank accepts no responsibility or liability for the information contained in this document. Any interested party should conduct an independent investigation to verify the information contained herein.

# BOYER BDO OFFICE BUILDING

1150 South Depot Drive, Ogden, Utah 84401



## 1<sup>ST</sup> FLOOR

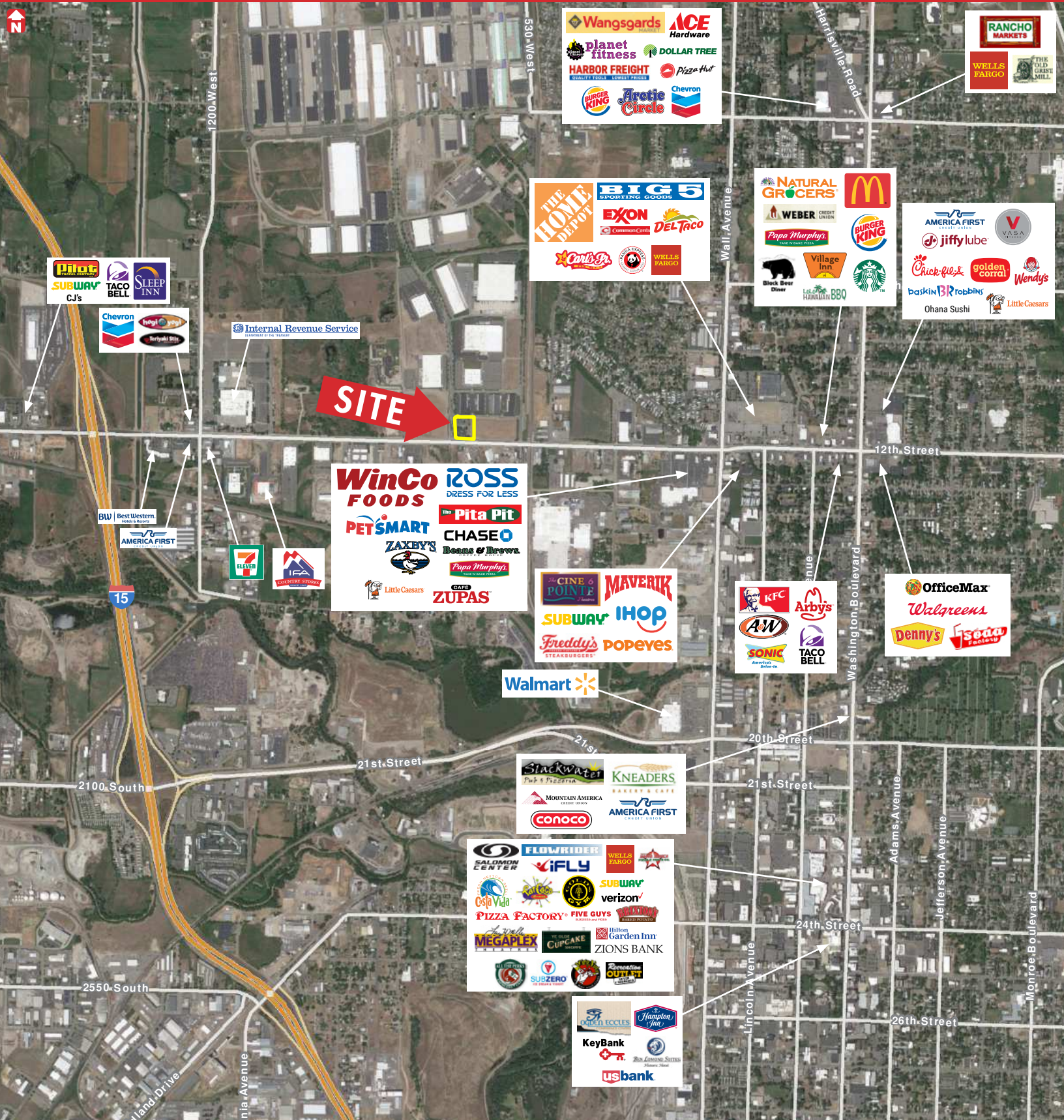


## 2<sup>ND</sup> FLOOR



# BOYER BDO OFFICE BUILDING

1150 South Depot Drive, Ogden, Utah 84401



**SITE** →