

# 1590 WESTCHESTER AVENUE

BETWEEN MANOR AND STRATFORD AVENUES | BRONX



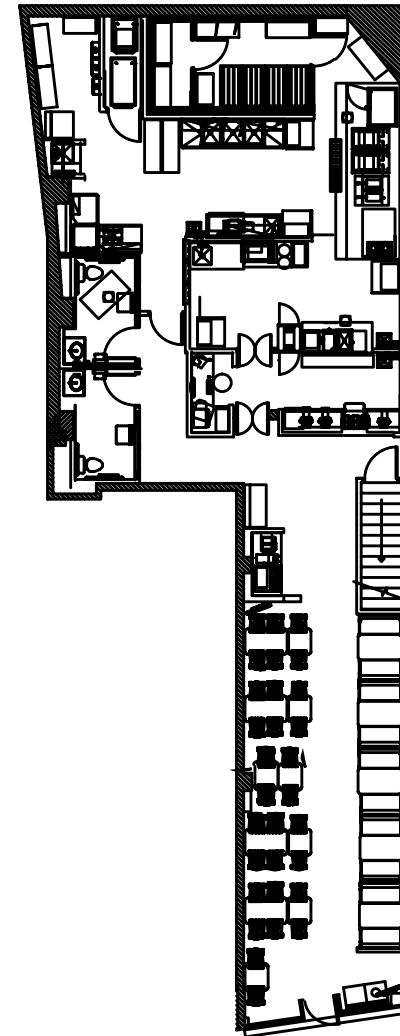
# 1590 WESTCHESTER AVENUE

BETWEEN MANOR AND STRATFORD AVENUES | BRONX

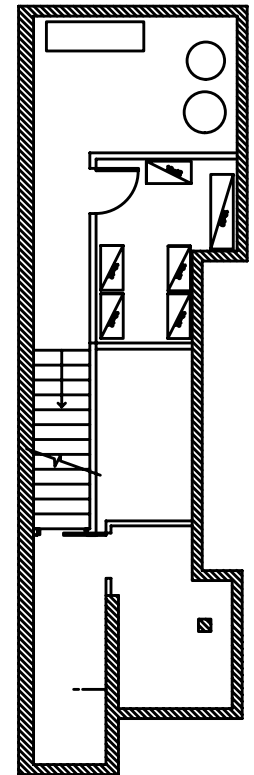
Interior



Ground Floor



Cellar Floor



## SIZE

Ground Floor

2,500 SF

## FRONTAGE

15'

## CEILING HEIGHT

10'

## ASKING RENT

Upon Request

## POSSESSION

Immediate

## TRANSPORTATION

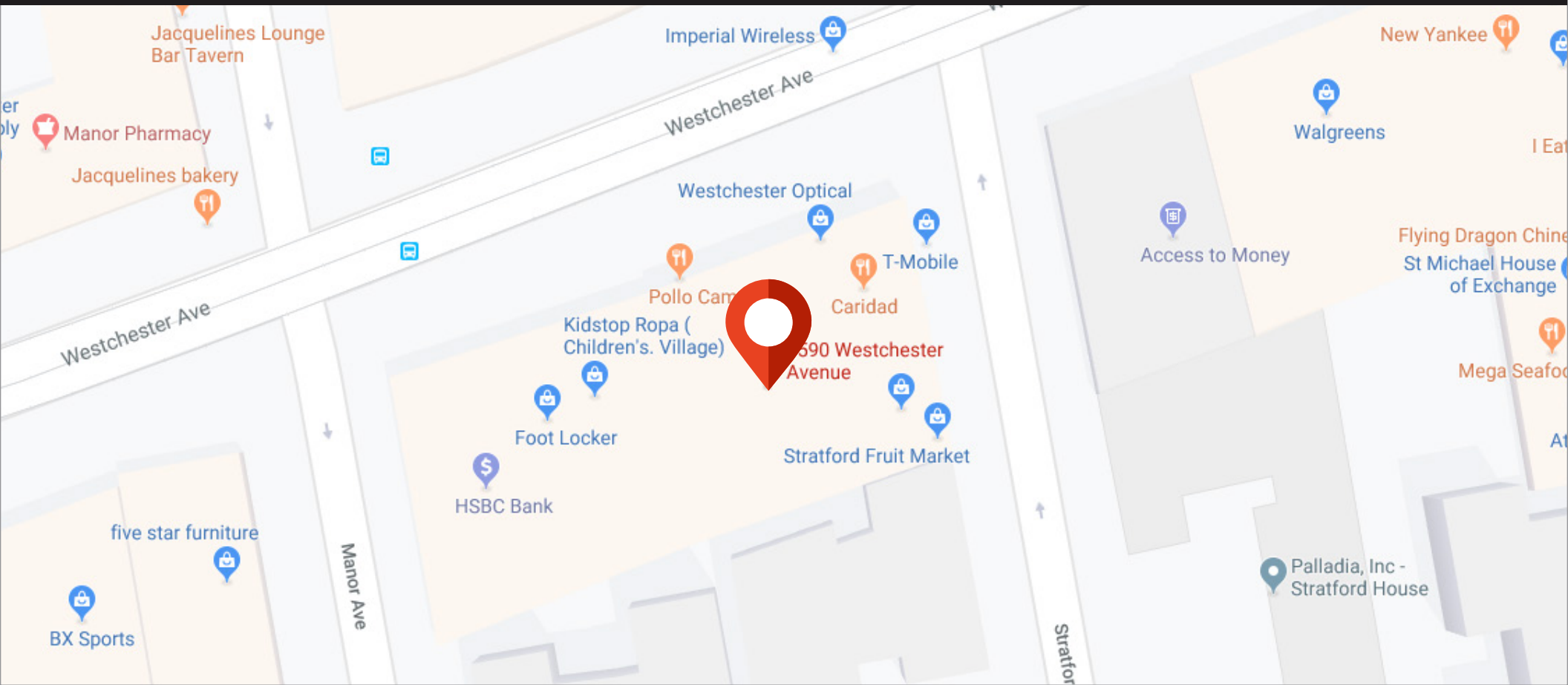
6

## COMMENTS

- Built out restaurant
- Heavy foot traffic
- Close proximity to the 6 train
- Next door to Dunkin' Donuts and Foot Locker

# 1590 WESTCHESTER AVENUE

BETWEEN MANOR AND STRATFORD AVENUES | BRONX



## NEIGHBORS



**KASSIN SABBAGH REALTY**  
1385 Broadway 22nd floor  
New York, NY 10018  
(212) 417 - 9217  
www.ksrny.com

CONTACT OUR BROKER(S) FOR MORE INFORMATION

**DAVID SABBAGH**

DSabbagh@ksrny.com

**646.784.7735**

**SOLOMON SHARABY**

SShraby@ksrny.com

**718.986.7149**

All information supplied in this marketing presentation and/or flyer is from sources deemed reliable and is furnished subject to errors, omissions, modifications, removal of listings from sale/lease and to any listing conditions. Any square footage, dimensions, floor plans and/or technical data set forth are approximations and are subject to further elaboration/confirmation.