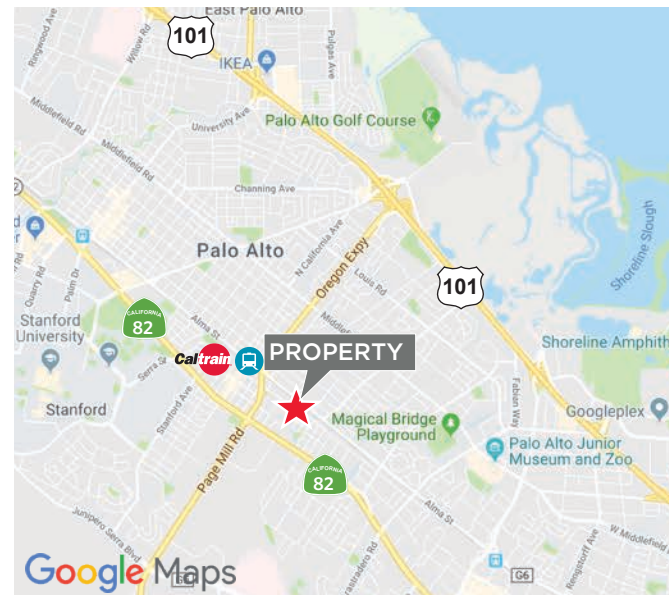




**±4,605 SF FREESTANDING OFFICE/R&D BUILDING**

**PROPERTY HIGHLIGHTS**

- Freestanding ±4,605 Square Feet
- 2 story building w/ additional office space on 2nd floor
- 4 Roll up grade level doors
- 2 large car bays that could be converted to tech office, R&D, or warehouse.
- Autonomous car use OK
- Walking distance to California Avenue and surrounding amenities
- Walking distance to Caltrain
- Property zoning GMB
- 33 parking spaces
- Available now



**Dan Persyn**  
Executive Managing Director  
+1 650 320 0255  
dan.persyn@cushwake.com  
LIC #01184798

**David Hiebert**  
Managing Principal  
+1 650 320 0250  
david.hiebert@cushwake.com  
LIC #01189320

**Mark Newton**  
Associate  
+1 650 320 0224  
mark.newton@cushwake.com  
LIC #02079448

525 University Avenue, Suite 220  
Palo Alto, CA 94301  
main +1 650 852 1200  
fax +1 650 856 1098  
**cushmanwakefield.com**



**CUSHMAN &  
WAKEFIELD**

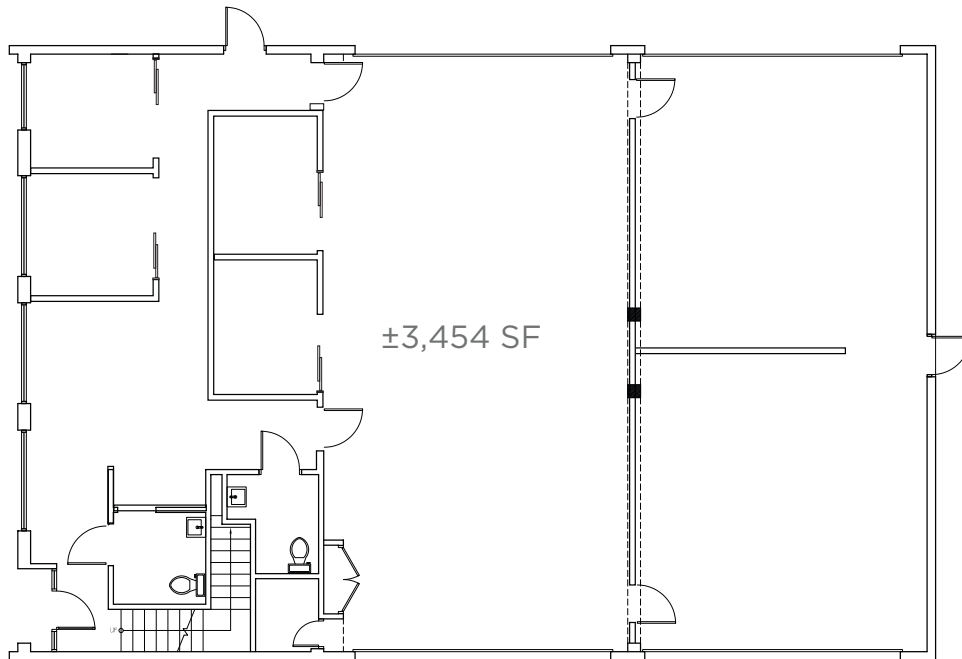
FOR LEASE

**3241 Park Boulevard**

Palo Alto, California

## FLOOR PLAN

First Floor



Floor plan not to scale

**Dan Persyn**

Executive Managing Director  
+1 650 320 0255  
dan.persyn@cushwake.com  
LIC #01184798

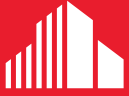
**David Hiebert**

Managing Principal  
+1 650 320 0250  
david.hiebert@cushwake.com  
LIC #01189320

**Mark Newton**

Associate  
+1 650 320 0224  
mark.newton@cushwake.com  
LIC #02079448

525 University Avenue, Suite 220  
Palo Alto, CA 94301  
main +1 650 852 1200  
fax +1 650 856 1098  
**cushmanwakefield.com**



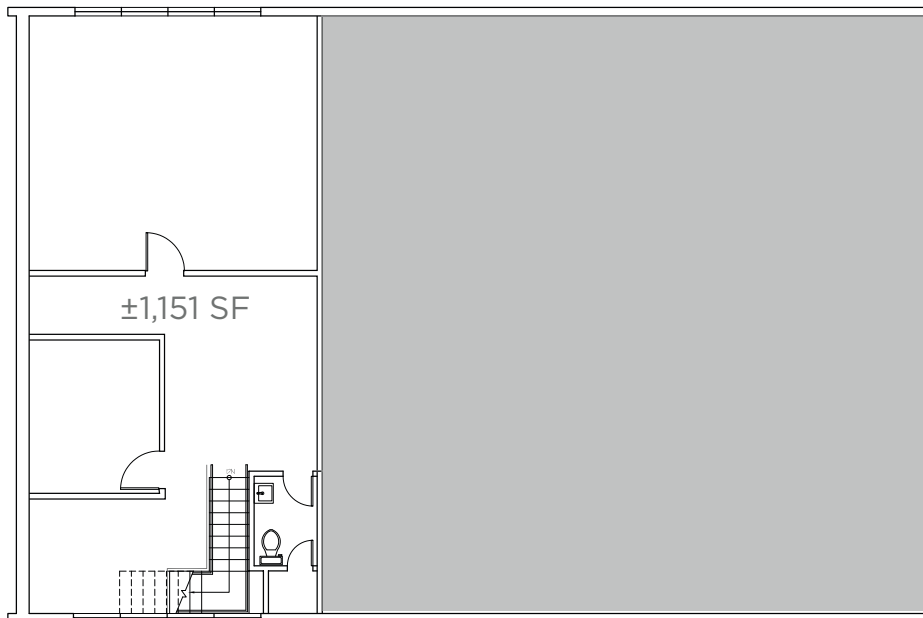
**CUSHMAN &  
WAKEFIELD**

FOR LEASE

**3241 Park Boulevard**  
Palo Alto, California

## FLOOR PLAN

Second Floor



Floor plan not to scale

**Dan Persyn**

Executive Managing Director  
+1 650 320 0255  
dan.persyn@cushwake.com  
LIC #01184798

**David Hiebert**

Managing Principal  
+1 650 320 0250  
david.hiebert@cushwake.com  
LIC #01189320

**Mark Newton**

Associate  
+1 650 320 0224  
mark.newton@cushwake.com  
LIC #02079448

525 University Avenue, Suite 220  
Palo Alto, CA 94301  
main +1 650 852 1200  
fax +1 650 856 1098  
**cushmanwakefield.com**