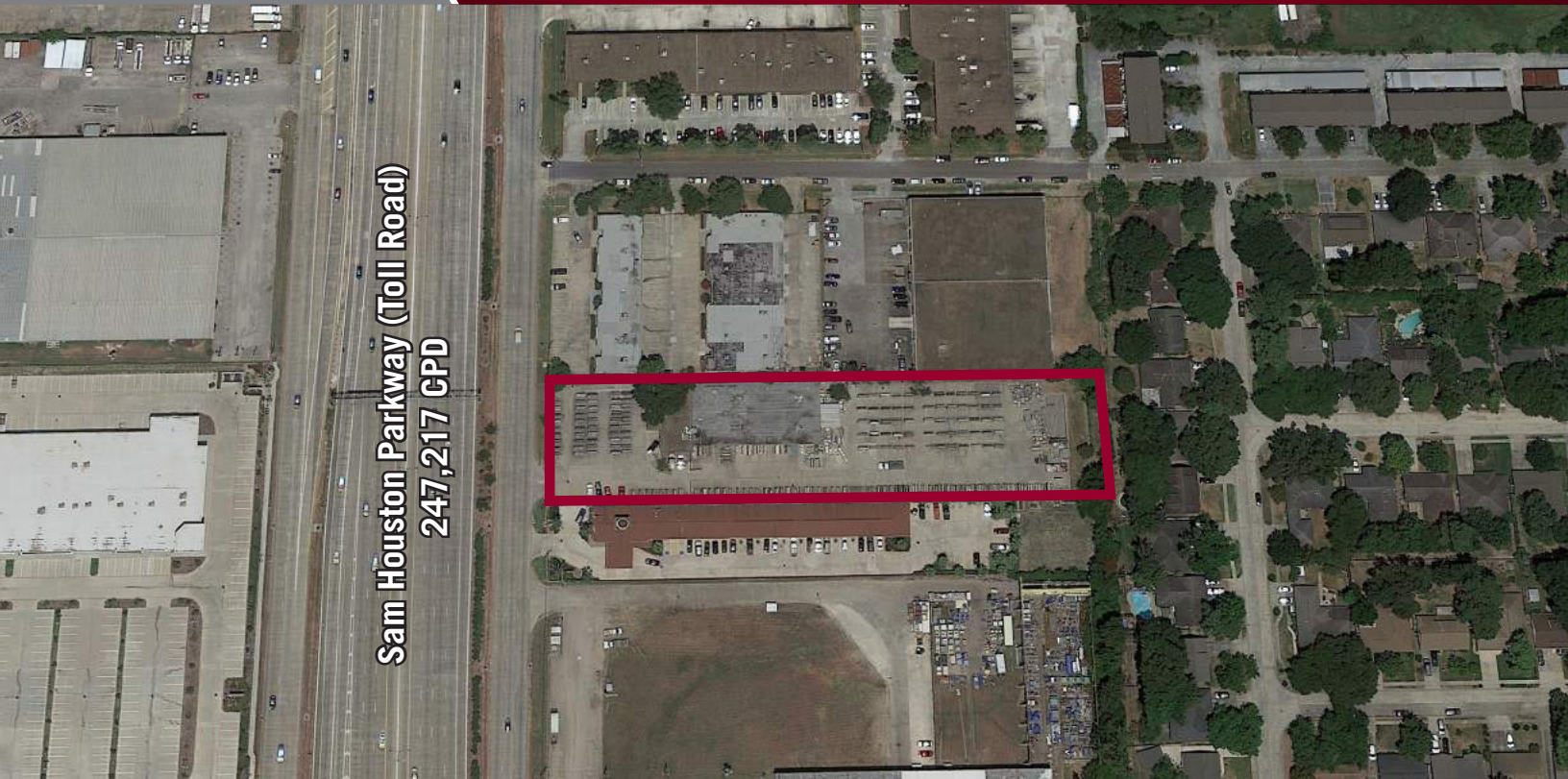


For Sale

1390 W Sam Houston Parkway N, Houston, TX 77043

1.829 ACRES / 12,000 SF AVAILABLE



LAND DATA

- 1.829 Acres of Land
- 98% Concrete Coverage
- Great Redevelopment Tract

BUILDING DATA

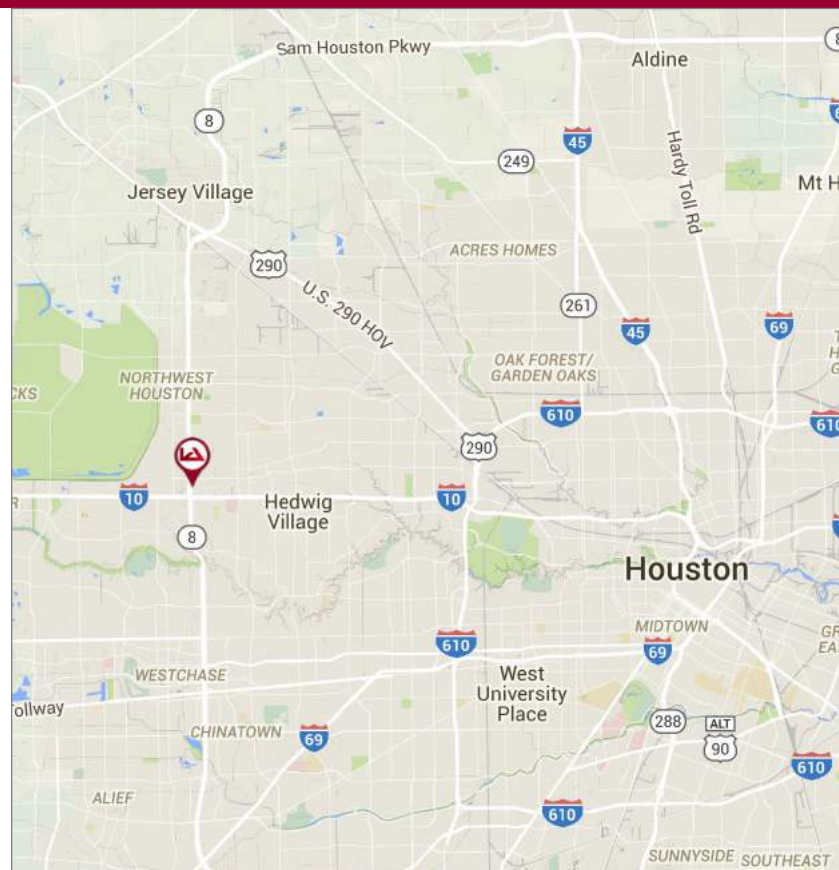
- 12,000 SF Building
- 14' Clear Height
- 3 Phase Power / 480 Volt
- 1 Dock Well
- 2 10' x 12' Overhead Door
- Fenced Outside Storage

DEMOGRAPHICS

	1 Mile	3 Mile	5 Mile
2015 Total Population:	9,621	106,541	308,000
2015 Total Households:	3,211	38,537	122,347
Median HH Income:	\$42,869	\$61,832	\$58,469

ECONOMIC DATA

Sale Price: \$2,788,493



For more information contact:

Reed Parker

r.parker@lee-associates.com
D 972.934.4020

Grady Tibbs (Brazos ML)

budtibbs@gmail.com
D 713.298.8159



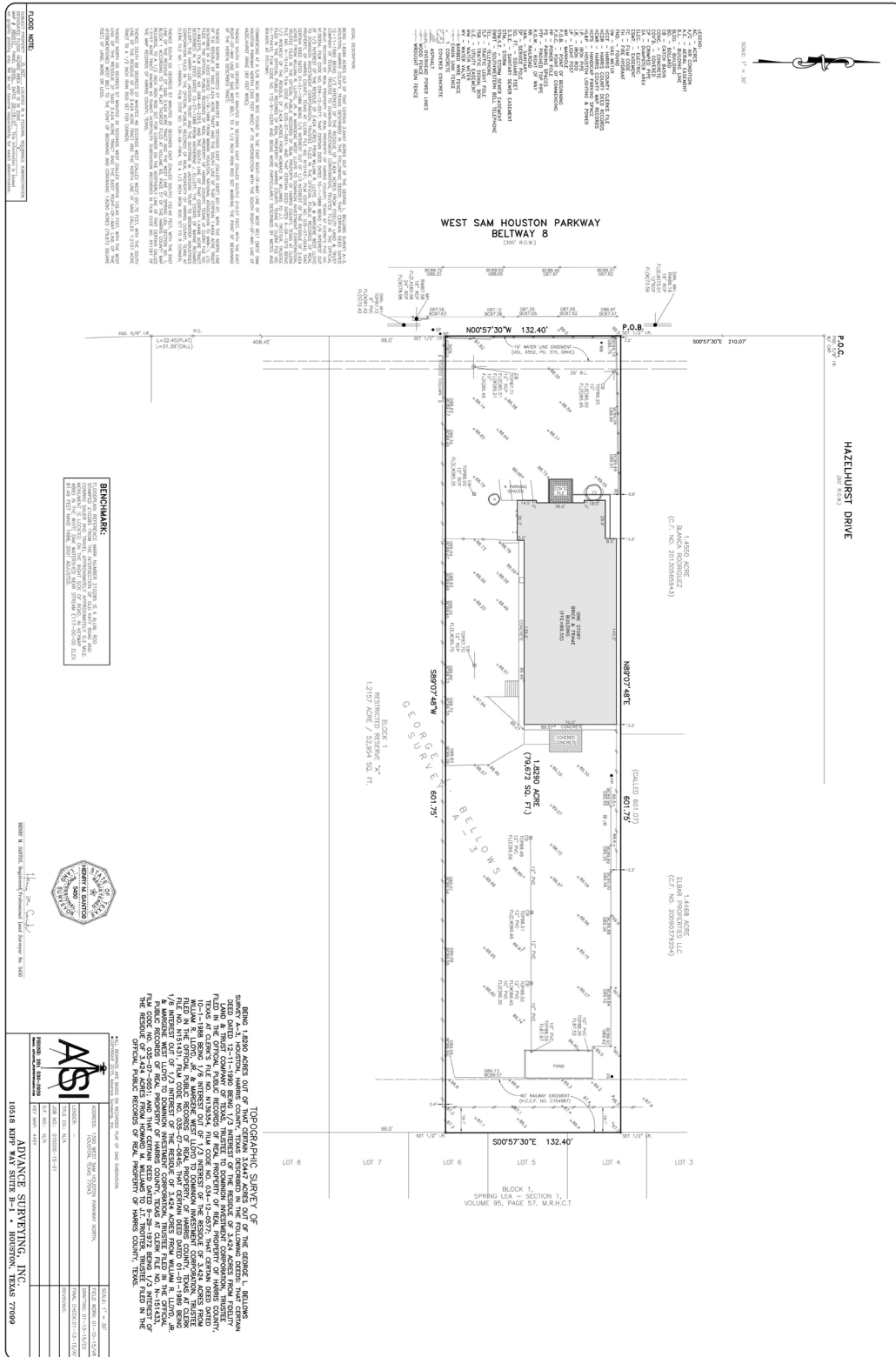
lee-associates.com



For Sale

1390 W Sam Houston Parkway N, Houston, TX 77043

1.829 ACRES / 12,000 SF AVAILABLE



The property information/detail contained herein has been obtained from other sources believed to be reliable, and DFW Lee & Associates, LLC has not independently verified such information's accuracy. DFW Lee & Associates, LLC makes no representations, guarantees, or express or implied warranties of any kind regarding the accuracy or completeness of the information provided herein nor the condition of the property and expressly disclaims all such warranties, including but not limited to the implied warranty of suitability and fitness for a particular purpose. Buyer/Lessee should perform its own due diligence regarding the accuracy of the information upon which buyer/lessee relies when entering into any transaction with seller/lessor herein. Furthermore, the information provided herein, including any sale/lease terms, are being provided subject to errors, omissions, changes of price or conditions, prior sale or lease, and withdrawal without notice.

For more information contact:

Reed Parker
rparker@lee-associates.com
D 972.934.4020

Grady Tibbs (Brazos ML)
budtibbs@gmail.com
D 713.298.8159

lee-associates.com

