

**FOR
LEASE**

2855 TELEGRAPH AVENUE BERKELEY
±1700, ±2500 SF, ±4300 ON 2ND FLOOR
±800, ±1000, ±2400, ±3100 SF ON 3RD FLOOR
±1500 SF ON 4TH FLOOR



PRIVATE OFFICES • OPEN AREAS • CONFERENCE ROOMS

**\$3.25 PSF
FULL SERVICE**



Suites offer a mix of private offices and open areas suitable for cubicles or additional private offices. Nice window lines, some great views to Oakland and Berkeley Hills.

Combinable suites include:

- Ste 203 – ±2560 SF
- Ste 204 – ±1747 SF
- Ste 302 – ±997 SF
- Ste 305 – ±2372 SF
- Ste 308 – ±762 SF
- Ste 405 – ±1500 SF

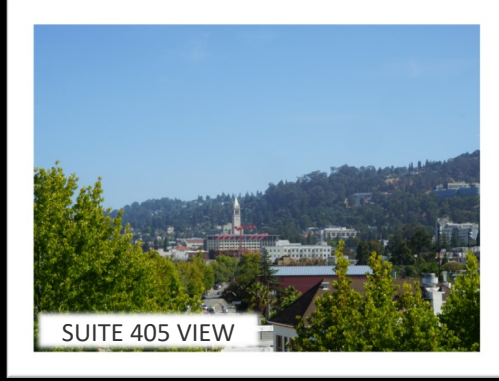
Common benefits:

- Onsite parking and security
- Onsite storage from 60 to 270 square feet
- Common conference room
- [Alta Bates](#) Shuttle to BART
- Enclosed bike parking
- Easy elevator access for furniture, equipment

[FLOOR PLANS FOLLOW](#)



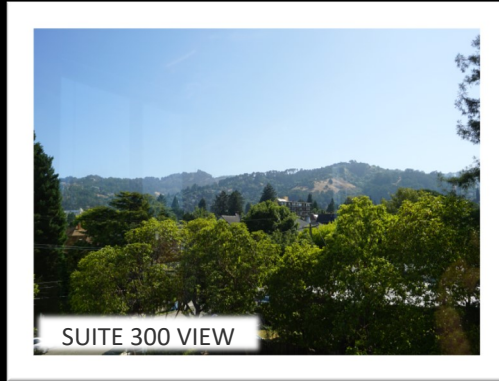
EXAMPLE: SUITE 405



SUITE 405 VIEW



EXAMPLE: SUITE 300

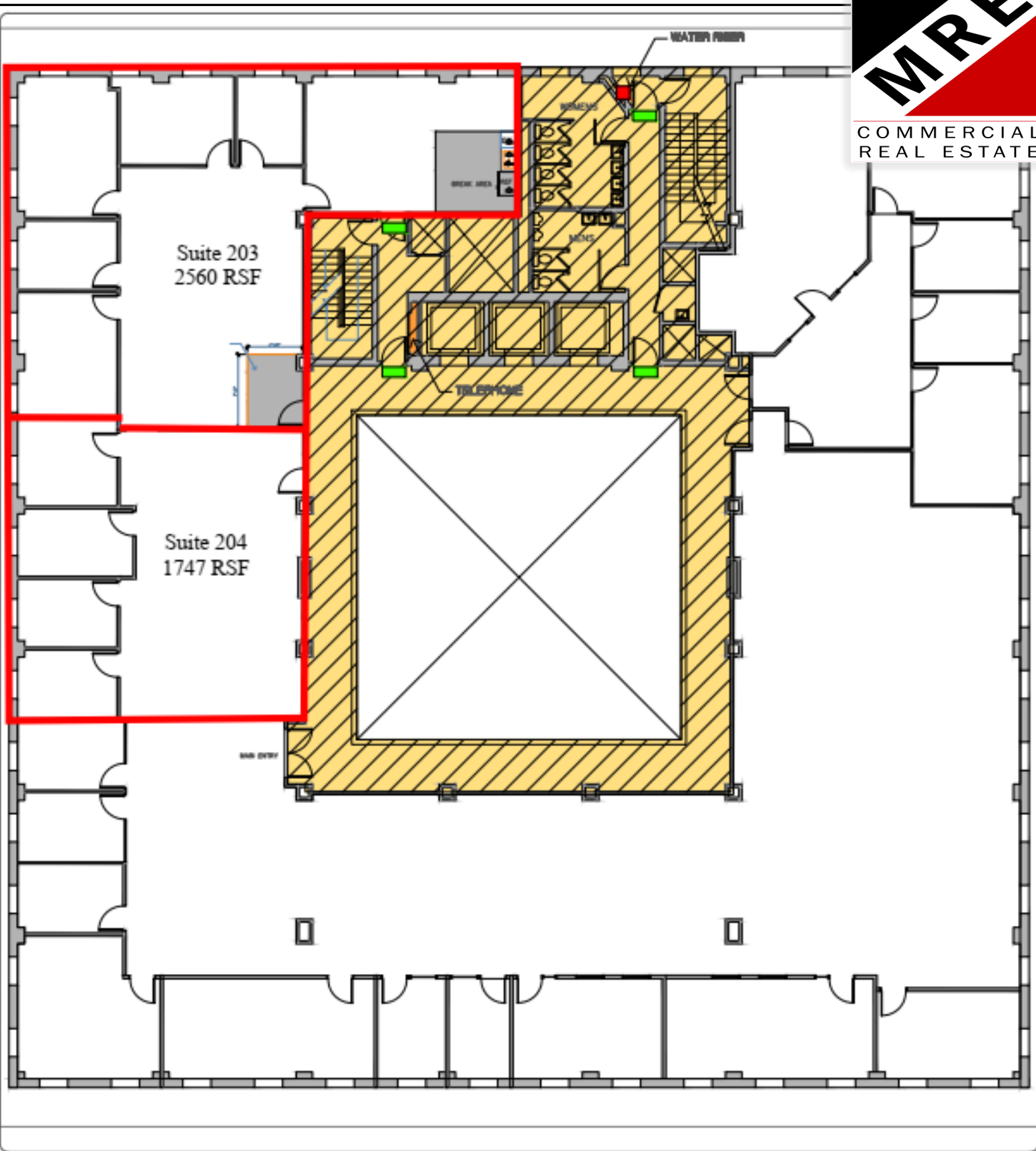


SUITE 300 VIEW

Matt Gondak
510-450-1434
mgondak@mrecommercial.com
CA BRE License: 00832220
www.mrecommercial.com

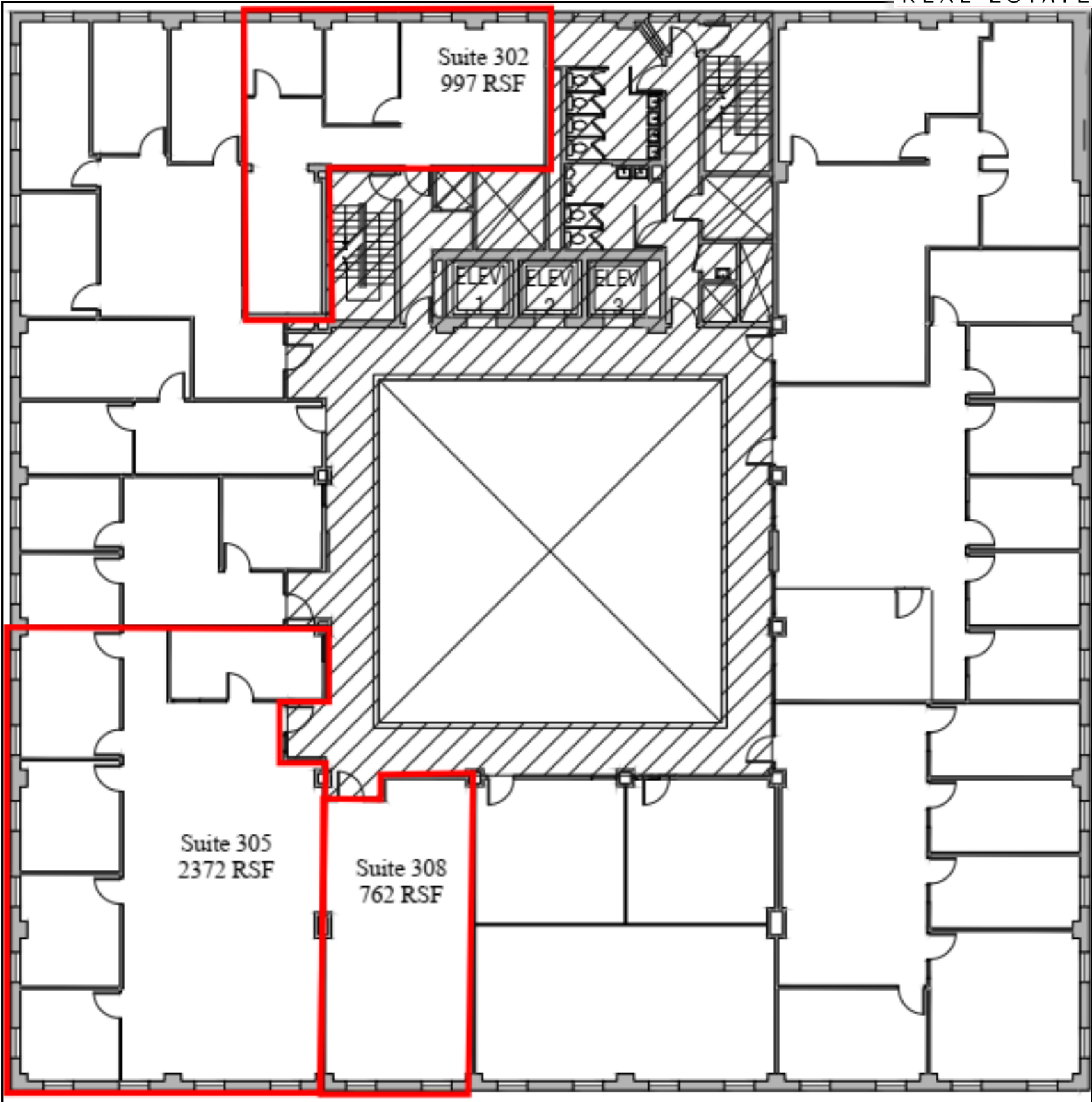
[PHOTOS](#) [STREET VIEW](#) [SATELLITE](#) [MAP](#) [AREA BUSINESS](#)

All information furnished herein was provided by sources deemed reliable, but no representation is made or implied as to the accuracy thereof. This information herein and within the pages that follow is offered in good faith, but is subject to errors, omissions, change of price, prior sale, rental, lease or financing, withdrawal, or other conditions.

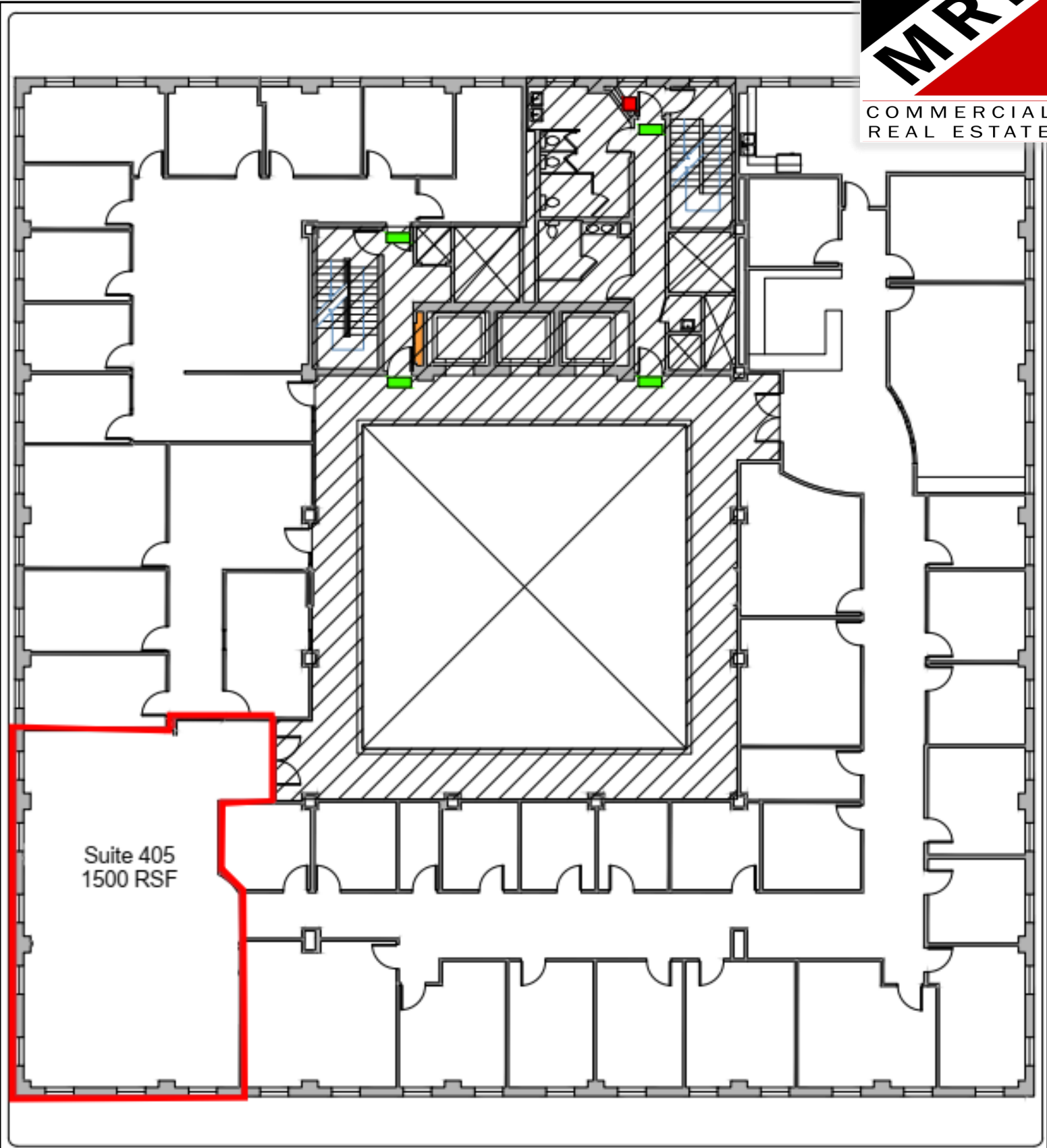


2ND FLOOR PLAN TELEGRAPH

2855 TELEGRAPH AVE, BERKELEY, CA 94705



3rd Floor Plan
2855 Telegraph Ave Berkeley, CA



Suite 405
1500 RSF

4TH FLOOR PLAN TELEGRAPH

2855 TELEGRAPH AVE, BERKELEY, CA 94705