

# CUBEWORK®



**6433 SE Lake Road  
Milwaukie, OR 97222**

 **(800) 338.6369**

 **info@cubework.com**

 **www.cubework.com**

 **LEARN  
MORE**

# KEY DISTANCE



## BUILDING SPECS:

**Building size:** 160,338 SF

**Warehouse available:** 300-50,000 SF

**Private office available:** 200-4,000 SF

**Floor:** Reinforced Concrete

**Column spacing:** 25' x 60'

**Clear height:** 18' - 27'

**Drive-In Bays:** 1

**Exterior Dock Doors:** 18

**Standard Parking Spaces:** 36



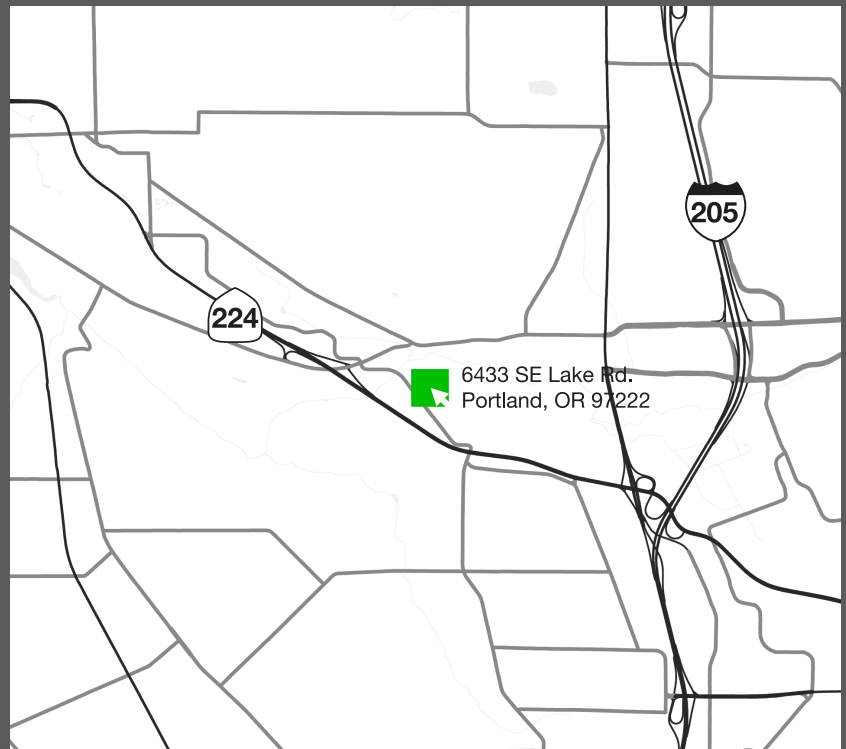
**15.4 mi**  
Portland  
International Airport



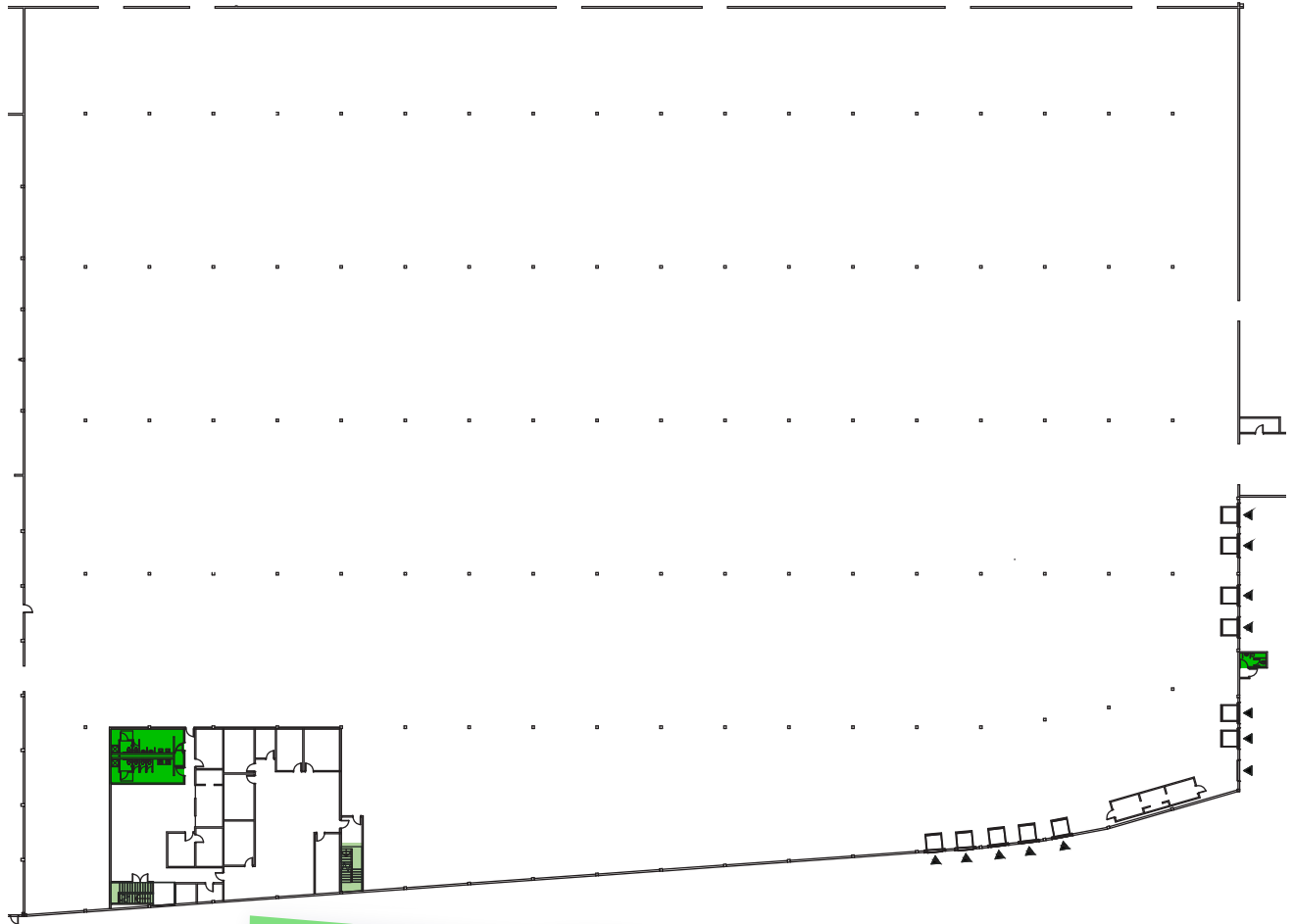
**2.3 mi**  
UPS Store



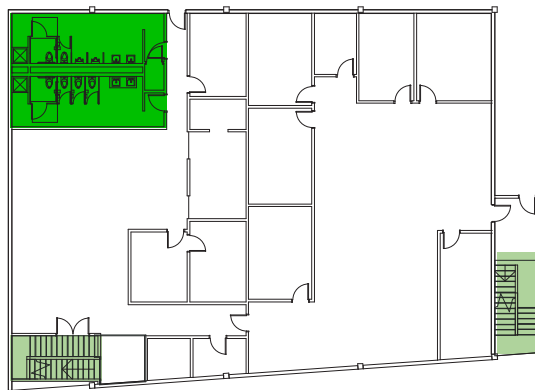
**2.6 mi**  
United States Postal  
Service (USPS)



# BUILDING FEATURES



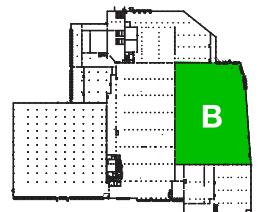
## OFFICE A



### KEY

■ RESTROOMS

■ STAIRS





## AMENITIES

---

- 24/7 Building Access
- Coffee & Fresh Water
- Loading Docks
- Global Network
- High-Speed Internet
- Creative Workspaces
- CCTV, Surveillance System
- Gym & Lockers
- Unique Common Areas
- 24/7 Customer Service
- Daily Cleaning and Maintenance
- Fully Furnished Offices
- Conference Rooms
- Community Managers
- Business Class Printers
- Security Guards
- Mail and Package Handling
- Social Events

## SERVICES

---

- Front Desk Service
- Fresh Coffee & Tea
- Flexible On-demand Warehouse Terms
- Mail and Package Handling
- Air Conditioning
- Option to Merge
- Daily Cleaning
- Surveillance & Night Security Guards
- Office Supplies
- Business Class Printers

Amenities vary on location

# FACILITY PHOTOS



FOR MORE INFORMATION CONTACT

📞 **(800) 338.6369**

✉ [info@cubework.com](mailto:info@cubework.com)

🌐 [www.cubework.com](http://www.cubework.com)