

151 DYCKMAN STREET

LOCATED JUST OFF THE CORNER OF SHERMAN AVENUE



APPROXIMATE SIZE:

2,000 sq. ft. Ground
2,000 sq. ft. Basement

FRONTAGE:

20'

ASKING RENT:

Upon request

NEIGHBORS:

Walgreens
Footlocker
CVS
Jimmy Jazz
Gamestop
Chase
Sprint
Dunkin Donuts

COMMENTS:

- All uses considered; venting in place
- Available for immediate possession
- Ceiling Height: 15'
- Previously Urban Fusion Kitchen
- Tremendous visibility on bustling Dyckman Street
- Located in densely populated residential neighborhood

1/4 mile radius



24,671

Population



\$59,078

Avg. Household Income



2,782

Employees

MASS TRANSPORTATION:

DYCKMAN ST (1)

2,263,932 annual riders

UPPER MANHATTAN RETAIL FOR LEASE

151 DYCKMAN STREET

Located just off the corner of Sherman Avenue

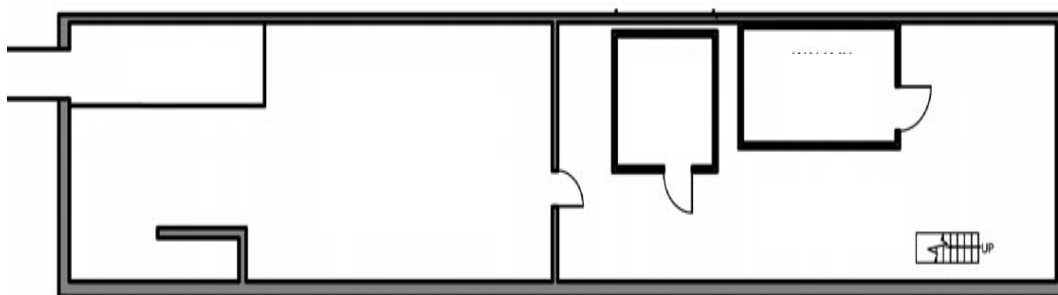
GROUND FLOOR



MEZZANINE



BASEMENT



FOR MORE INFORMATION

Michael Peguero
michael@zelnikco.com

Sean Philipps
sean@zelnikco.com

Cory Zelnik
cory@zelnikco.com

Zelnik & Company
ph: 212-223-2200