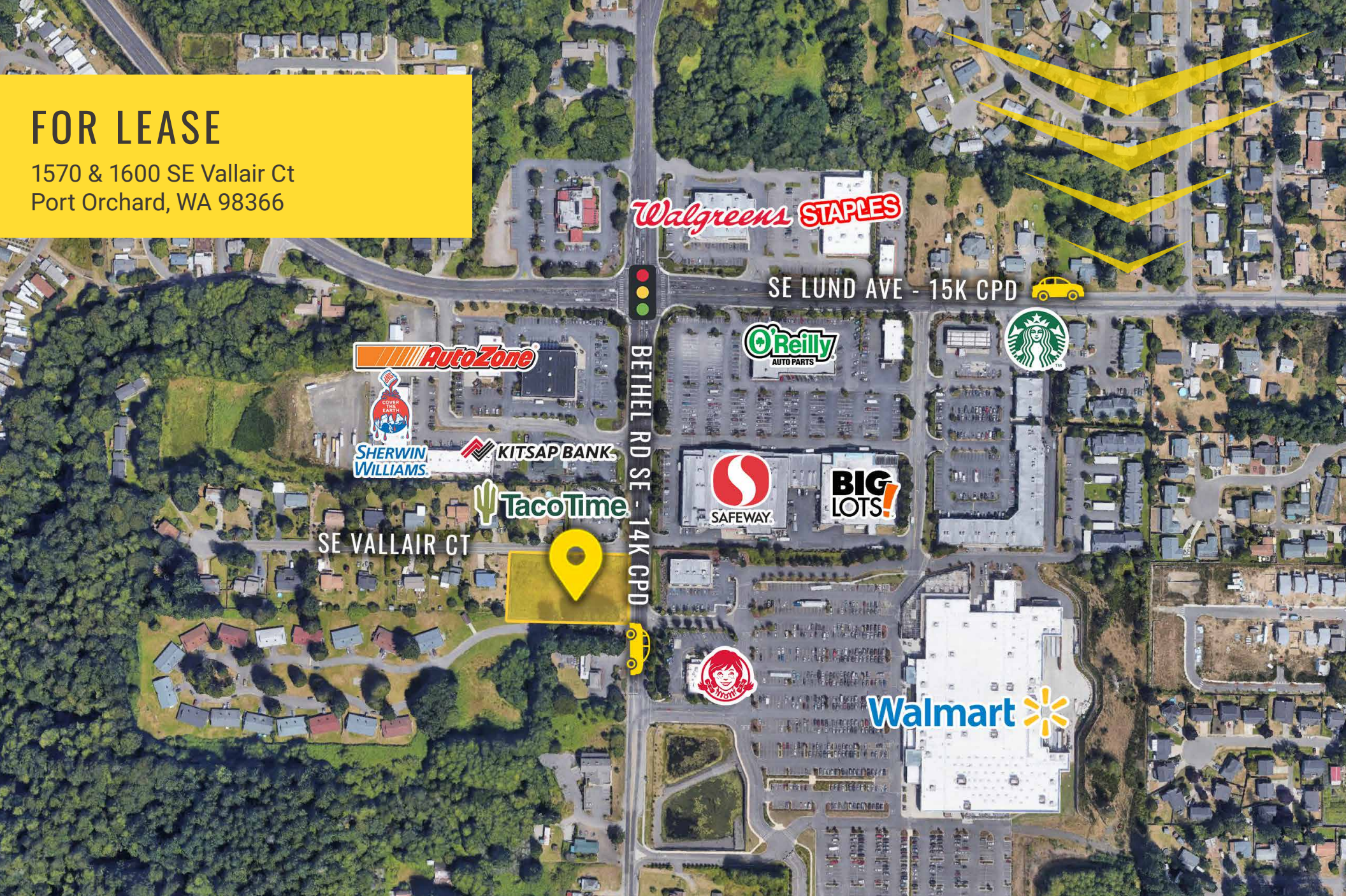


FOR LEASE

1570 & 1600 SE Vallair Ct
Port Orchard, WA 98366



PORT ORCHARD LAND

Justin Holmes | Josh Parnell

First Western Properties—Tacoma Inc. | 253.472.0404
6402 Tacoma Mall Blvd, Tacoma, WA 98409 | fwp-inc.com

1570 & 1600 SE VALLAIR CT:

42,253 SF - AVAILABLE

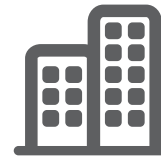
- Excellent location on Bethel Rd SE with 14,000 CPD
- Adjacent to Safeway and Walmart anchored shopping centers
- Available for ground lease or build to suit



Population



Average HH Income

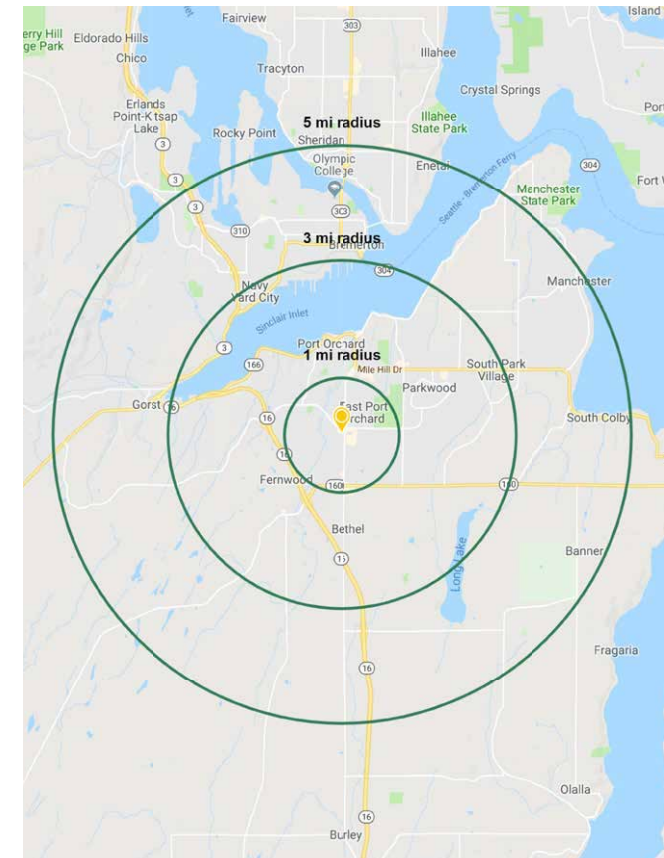


Daytime Population

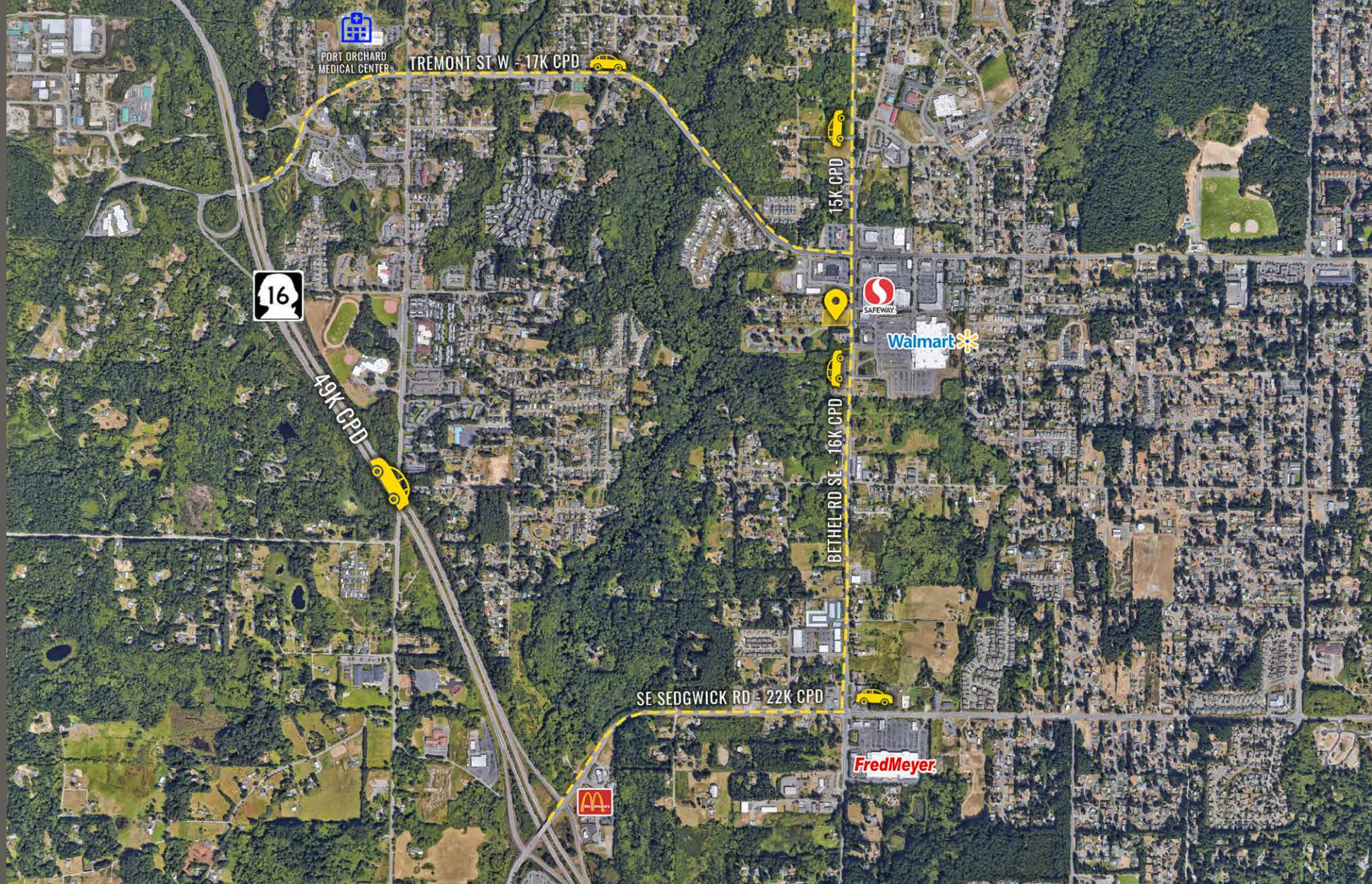
Regis - 2018

	Population	Average HH Income	Daytime Population
Mile 1	9,262	\$72,003	6,575
Mile 3	36,738	\$77,134	26,704
Mile 5	91,115	\$79,463	61,474

NEARBY TENANTS



LOCATION DETAILS



Located across from
two grocery anchored
shopping centers



Located moments
from HWY 16



14,000 CPD
Bethel Rd SE



15,000 CPD
SE Luna Avenue



PORT ORCHARD, WA is located on the Kitsap Peninsula and is a perfect destination for boaters and water sports – featuring a nationally recognized water trail for paddlers. The Downtown scene is built with a collection of eclectic boutiques, antiques, and collectible shops where shoppers can find a mix of designer and retro goods. The views of the Olympic Mountains and the serene landscape allow visitors and residents to enjoy all that Port Orchard has to offer.

TACOMA | KIRKLAND | PORTLAND | SEATTLE

RETAIL FOCUSED. RESULTS DRIVEN.

JUSTIN HOLMES

253.447.2282

justin@firstwesternproperties.com

JOSH PARNELL

253.284.3630

josh@firstwesternproperties.com



First Western Properties—Tacoma Inc. | 253.472.0404
6402 Tacoma Mall Blvd, Tacoma, WA 98409 | fwp-inc.com

© First Western Properties, Inc. DISCLAIMER: The above information has been secured from sources believed to be reliable, however, no representations are made to its accuracy. Prospective tenants or buyers should consult their professional advisors and conduct their own independent investigation. Properties are subject to change in price and/or availability without notice.