

# OFFICE / RETAIL

# FOR SALE OR LEASE



**21505 John R**

**Hazel Park, Michigan**

**Insite**  
**COMMERCIAL**

1111 W. Oakley Park Road  
Suite 220

Commerce, Michigan 48390  
(248) 359-9000 – Detroit Office  
(616) 241-2200 – Grand Rapids Office

[www.insitecommercial.com](http://www.insitecommercial.com)

# TABLE OF CONTENTS

# OFFICE / RETAIL FOR SALE OR LEASE

**21505 John R  
Hazel Park, Michigan**

<b>DISCLAIMER/ DISCLOSURE STATEMENT</b>	<b>page 1</b>
<b>SUMMARY</b>	<b>page 2</b>
<b>PHOTOGRAPHS</b>	<b>page 3-4</b>
<b>LAYOUT</b>	<b>page 5</b>
<b>AERIAL</b>	<b>page 6</b>
<b>AREA MAPS</b>	<b>page 7</b>
<b>DEMOGRAPHICS</b>	<b>pages 8-10</b>
<b>TRAFFIC COUNTS</b>	<b>page 11</b>



# DISCLAIMER/DISCLOSURE

Information contained herein was obtained from sources deemed to be reliable, but is not guaranteed. Any prospective purchaser/investor/tenant contemplating, under contract or in escrow for a transaction is urged to verify all information and to conduct their own inspections, investigations and due diligence through appropriate third party independent professionals selected by such prospective purchaser/investor/tenant.

All financial data should be verified by the prospective purchaser/investor/tenant including obtaining and reading applicable documents and reports and consulting appropriate independent professionals. Insite Commercial makes no warranties and/or representations regarding the veracity, completeness, or relevance of any financial data or assumptions. Insite Commercial does not serve as a financial advisor to any party regarding any proposed transaction. All data and assumptions regarding financial performance, including that used for financial modeling purposes, may differ from actual data or performance. Any estimates of market rents and/or projected rents that may be provided to a party do not necessarily mean that rents can be established at or increased to that level. Parties must evaluate any applicable contractual and governmental limitations, as well as market conditions, vacancy factors and other issues in order to determine rents from or for the property.

Legal questions from the prospective purchaser/investor/tenant should be discussed with an attorney. Tax questions from the prospective purchaser/investor/tenant should be discussed with a certified public accountant or tax attorney. Title questions from the prospective purchaser/investor/tenant should be discussed with a title officer or attorney. Questions from the prospective purchaser/investor/tenant regarding the condition of the property and whether the property complies with applicable governmental requirements should be discussed with appropriate engineers, architects, contractors, other consultants and governmental agencies. All properties and services are marketed by Insite Commercial in compliance with all applicable fair housing and equal opportunity laws.



# PROPERTY SUMMARY

**Location:** 21505 John R  
Hazel Park, MI 48030

**Total Building Size:** 2,029 SF

**Lot Size:** 0.15 acres

**Parcel I.D. #:** 25-35-427-042

**Sale Price:** \$130,000

**Lease Price:** \$1,500 per month, gross + utilities

**Zoning:** LB (Local Business)

**Property Tax:** +/- \$5,324.91 Annually

**Demographics in 5 Mile Radius:**

Population:	391,766 people
Households:	161,919 homes
Avg. HH Income:	\$63,560 USD
Traffic Counts:	9,000 VPD on John R

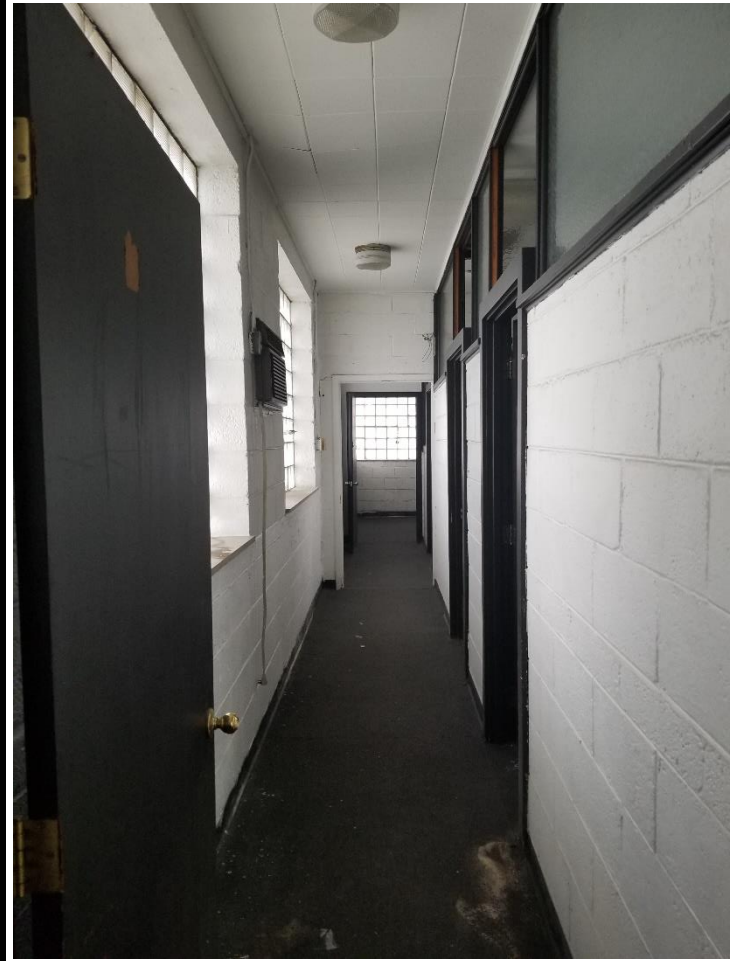
**Comments:** Freestanding office building on John R between 8 and 9 Mile. The building has a rubber roof with a multi-year warranty. Built out for office, this site has waiting room / secretary area, 7 offices, and two restrooms. In addition, this site has a very strong residential surrounding. Multiple options for next user. Seller is motivated and Lease option is available.

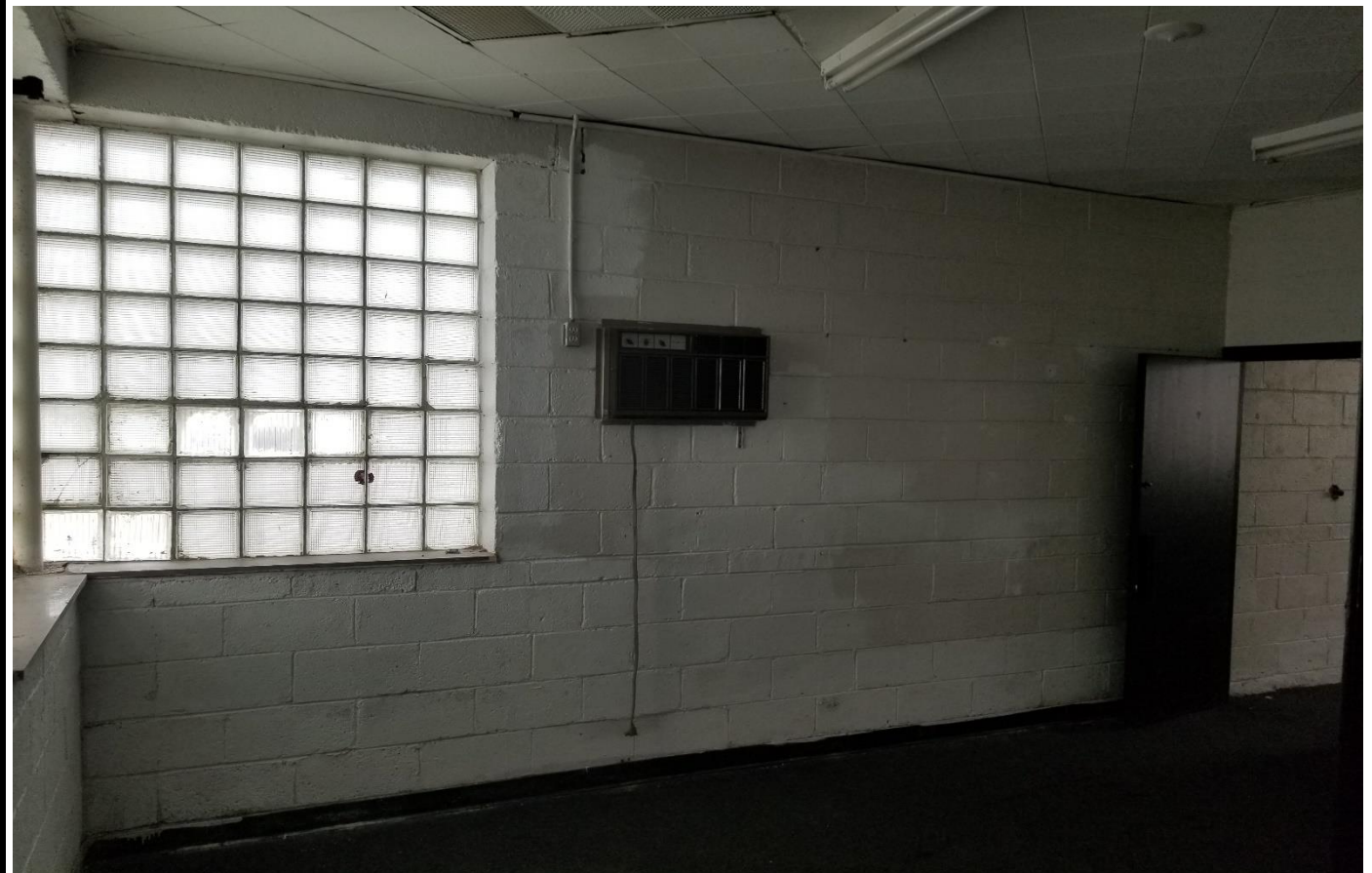
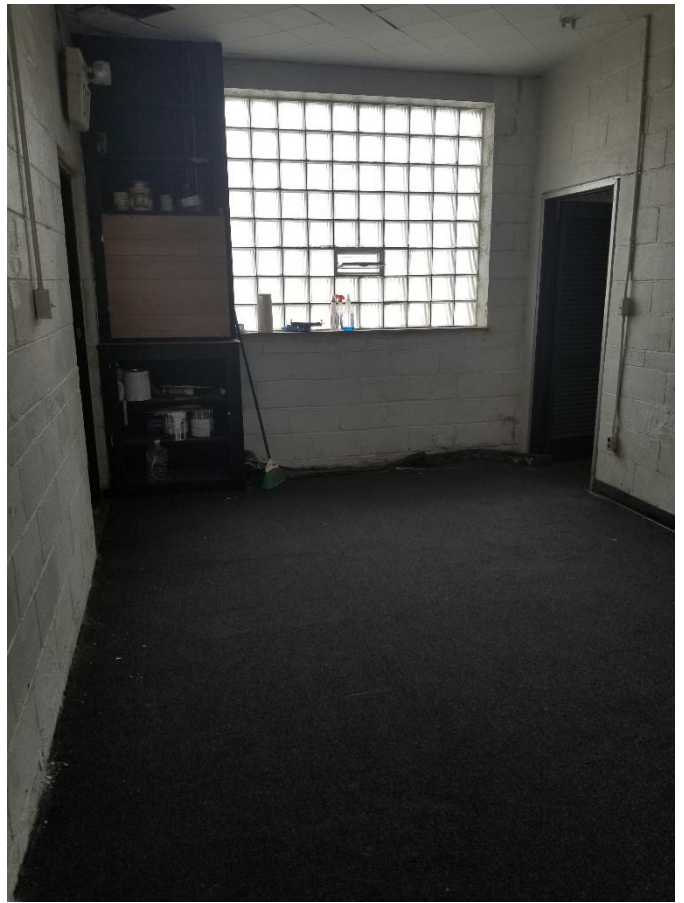
**For Information Contact:**

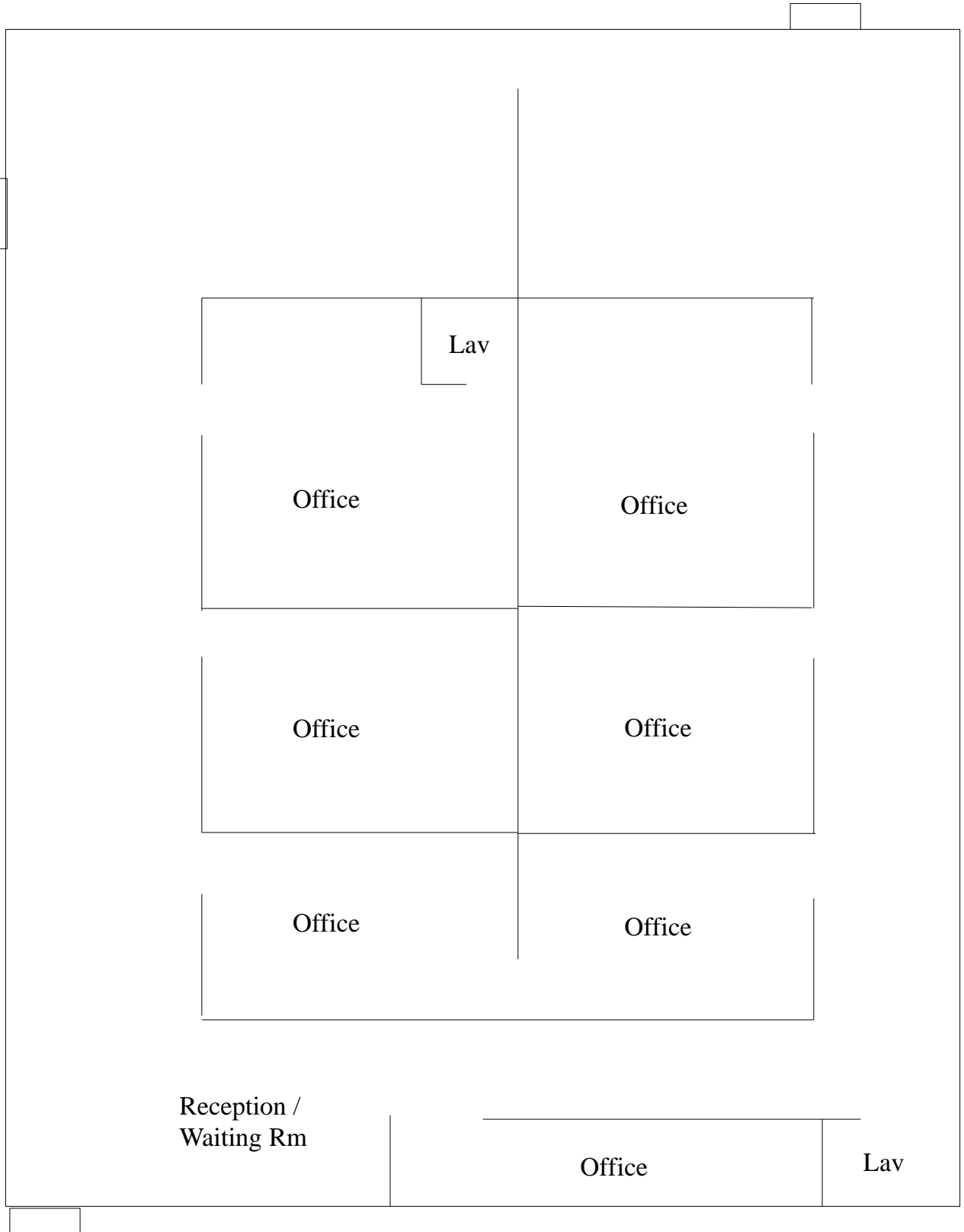
**KYLE NELSON**

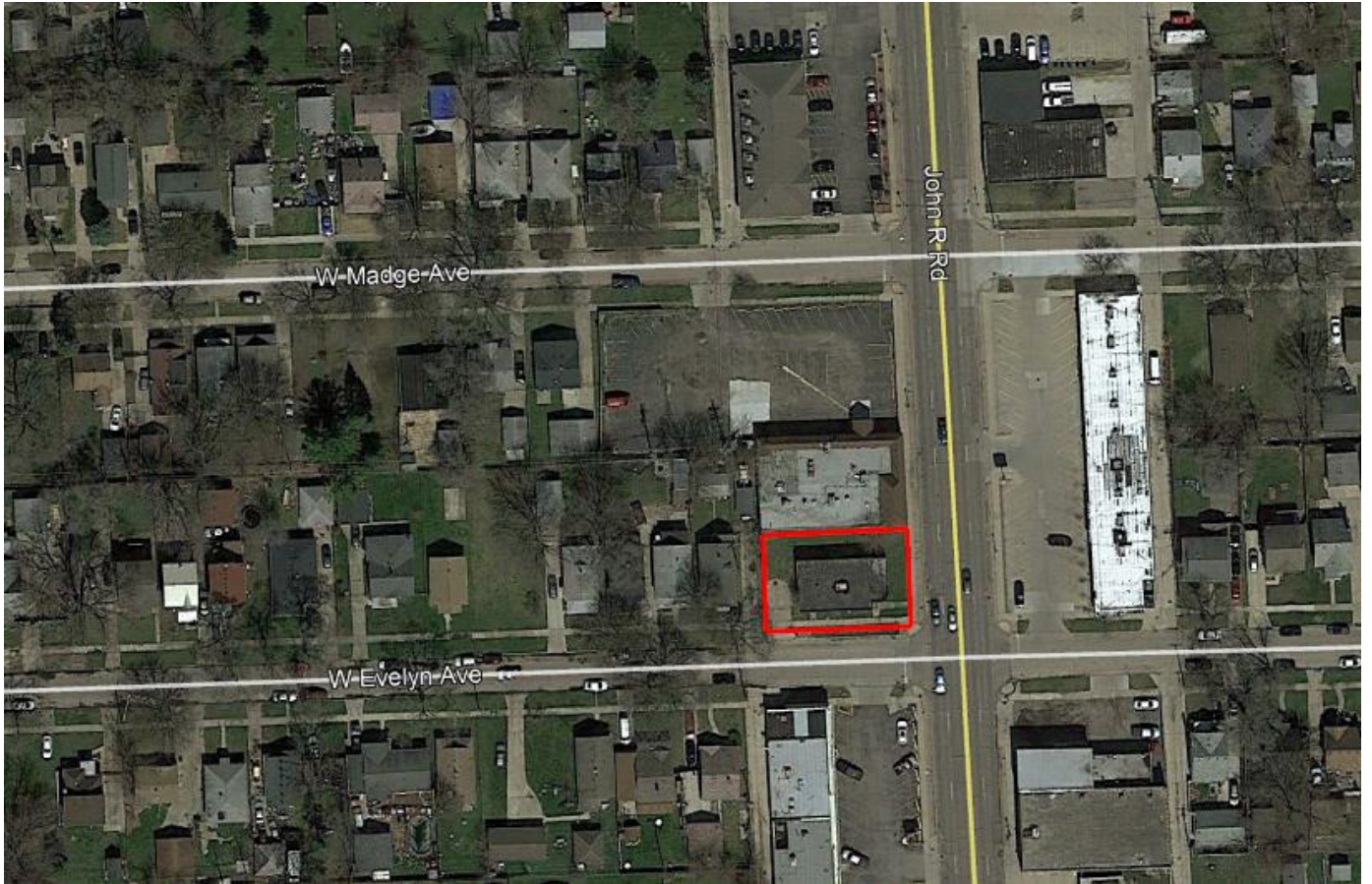
**248-359-9000**



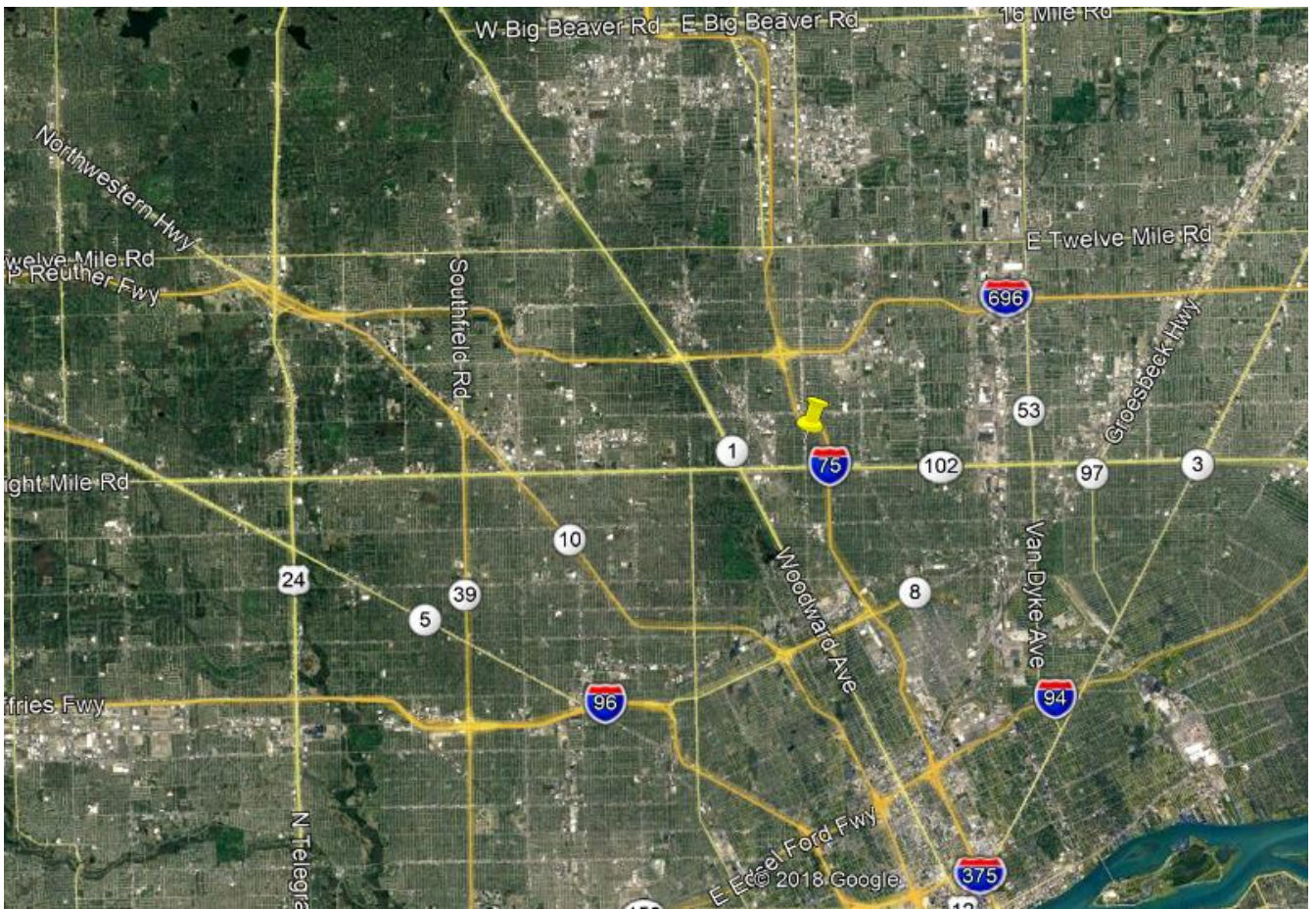
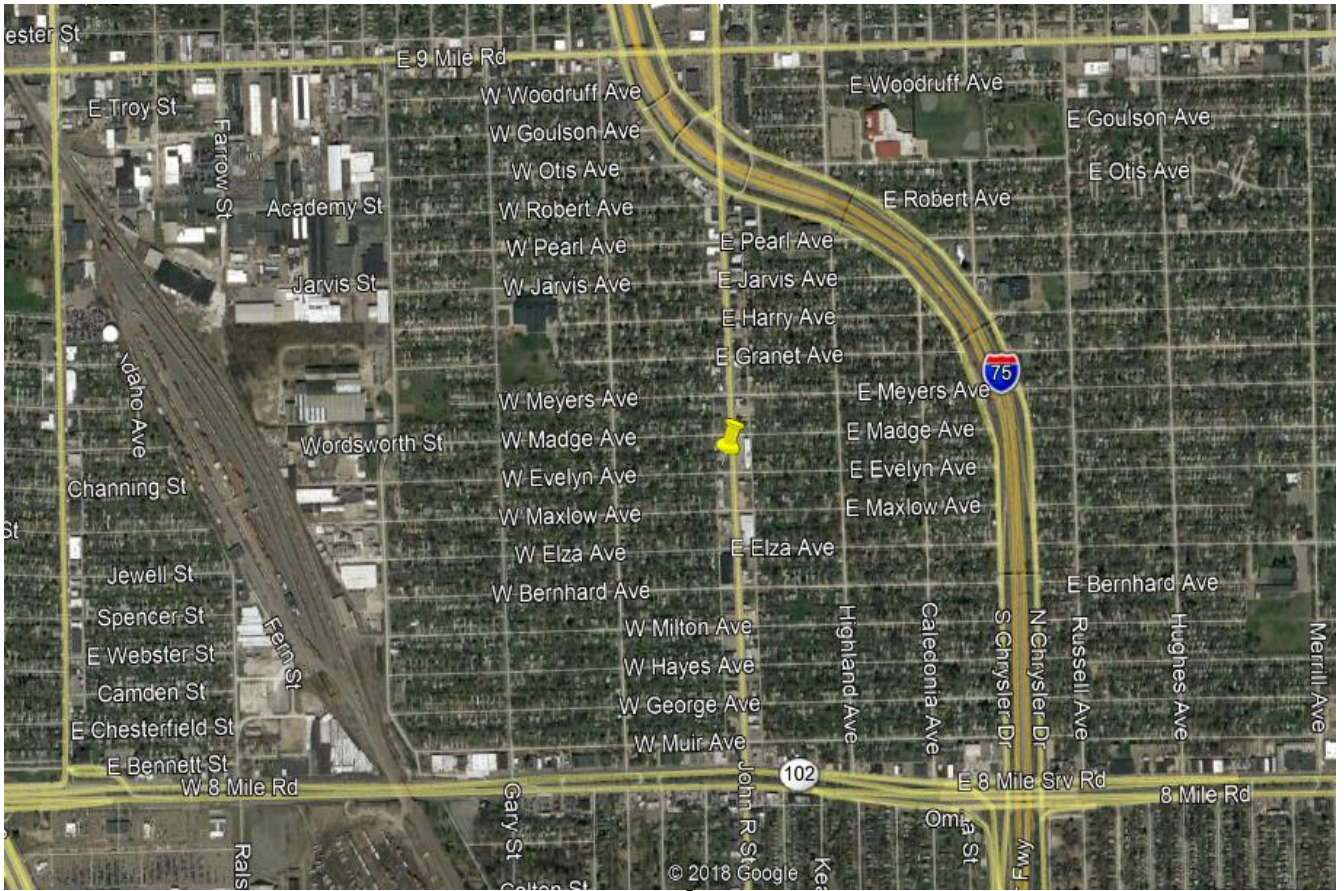












# DEMOGRAPHICS

## FULL PROFILE

2000-2010 Census, 2018 Estimates with 2023 Projections

Calculated using Weighted Block Centroid from Block Groups



Kyle Nelson  
 Lat/Lon: 42.4533/-83.1038

**21505 John R Rd**  
**Hazel Park, MI 48030**

1 mi radius    3 mi radius    5 mi radius

	1 mi radius	3 mi radius	5 mi radius	
<b>POPULATION</b>	2018 Estimated Population	16,094	137,043	391,768
	2023 Projected Population	17,610	141,487	402,897
	2010 Census Population	16,164	139,622	401,314
	2000 Census Population	20,232	168,040	471,762
	Projected Annual Growth 2018 to 2023	1.9%	0.6%	0.6%
	Historical Annual Growth 2000 to 2018	-1.1%	-1.0%	-0.9%
<b>HOUSEHOLDS</b>	2018 Estimated Households	6,644	58,584	161,919
	2023 Projected Households	7,382	61,569	169,517
	2010 Census Households	6,480	57,534	159,771
	2000 Census Households	7,561	65,205	181,425
	Projected Annual Growth 2018 to 2023	2.2%	1.0%	0.9%
	Historical Annual Growth 2000 to 2018	-0.7%	-0.6%	-0.6%
<b>AGE</b>	2018 Est. Population Under 10 Years	12.4%	11.4%	11.9%
	2018 Est. Population 10 to 19 Years	12.8%	11.2%	11.8%
	2018 Est. Population 20 to 29 Years	16.1%	16.1%	15.4%
	2018 Est. Population 30 to 44 Years	21.6%	20.3%	19.0%
	2018 Est. Population 45 to 59 Years	19.1%	19.8%	19.7%
	2018 Est. Population 60 to 74 Years	12.8%	14.9%	15.2%
	2018 Est. Population 75 Years or Over	5.1%	6.4%	7.0%
	2018 Est. Median Age	34.4	37.2	37.6
<b>MARITAL STATUS &amp; GENDER</b>	2018 Est. Male Population	49.7%	48.9%	48.1%
	2018 Est. Female Population	50.3%	51.1%	51.9%
	2018 Est. Never Married	47.2%	46.6%	45.7%
	2018 Est. Now Married	26.4%	29.2%	29.7%
	2018 Est. Separated or Divorced	19.0%	17.5%	17.4%
	2018 Est. Widowed	7.4%	6.8%	7.1%
<b>INCOME</b>	2018 Est. HH Income \$200,000 or More	1.7%	3.6%	3.7%
	2018 Est. HH Income \$150,000 to \$199,999	2.6%	3.7%	3.6%
	2018 Est. HH Income \$100,000 to \$149,999	9.9%	10.6%	10.3%
	2018 Est. HH Income \$75,000 to \$99,999	9.8%	10.9%	10.3%
	2018 Est. HH Income \$50,000 to \$74,999	14.7%	15.7%	15.7%
	2018 Est. HH Income \$35,000 to \$49,999	14.9%	13.7%	13.7%
	2018 Est. HH Income \$25,000 to \$34,999	10.4%	11.2%	10.9%
	2018 Est. HH Income \$15,000 to \$24,999	15.5%	13.0%	13.2%
	2018 Est. HH Income Under \$15,000	20.5%	17.6%	18.7%
	2018 Est. Average Household Income	\$51,980	\$64,994	\$63,560
	2018 Est. Median Household Income	\$39,683	\$48,205	\$47,614
2018 Est. Per Capita Income	\$21,493	\$27,952	\$26,471	
2018 Est. Total Businesses	521	4,568	13,508	
2018 Est. Total Employees	5,111	40,379	130,872	

All data is based on the most current available information. The information provided is based on the best available information and is not intended to be used for any purpose other than that for which it was provided. The information is provided for informational purposes only.

# DEMOGRAPHICS

## FULL PROFILE

2000-2010 Census, 2018 Estimates with 2023 Projections

Calculated using Weighted Block Centroid from Block Groups



Kyle Nelson

Lat/Lon: 42.4533/-83.1038

BFI

21505 John R Rd

Hazel Park, MI 48030

1 mi radius 3 mi radius 5 mi radius

	1 mi radius	3 mi radius	5 mi radius	
<b>RACE</b>	2018 Est. White	71.0%	53.1%	46.1%
	2018 Est. Black	21.1%	39.7%	45.2%
	2018 Est. Asian or Pacific Islander	2.0%	3.1%	5.0%
	2018 Est. American Indian or Alaska Native	0.7%	0.4%	0.3%
	2018 Est. Other Races	5.2%	3.8%	3.4%
<b>HISPANIC</b>	2018 Est. Hispanic Population	528	3,751	9,203
	2018 Est. Hispanic Population	3.3%	2.7%	2.3%
	2023 Proj. Hispanic Population	4.0%	3.4%	2.9%
	2010 Hispanic Population	2.5%	2.0%	1.6%
<b>EDUCATION (Adults 25 or Older)</b>	2018 Est. Adult Population (25 Years or Over)	10,826	96,538	271,787
	2018 Est. Elementary (Grade Level 0 to 8)	3.0%	3.2%	4.4%
	2018 Est. Some High School (Grade Level 9 to 11)	12.3%	9.8%	10.0%
	2018 Est. High School Graduate	33.6%	29.4%	29.7%
	2018 Est. Some College	25.5%	24.5%	23.9%
	2018 Est. Associate Degree Only	7.2%	7.5%	7.6%
	2018 Est. Bachelor Degree Only	13.0%	16.2%	15.2%
	2018 Est. Graduate Degree	5.4%	9.4%	9.2%
<b>HOUSING</b>	2018 Est. Total Housing Units	7,621	65,900	184,944
	2018 Est. Owner-Occupied	55.5%	58.4%	54.8%
	2018 Est. Renter-Occupied	31.7%	30.5%	32.7%
	2018 Est. Vacant Housing	12.8%	11.1%	12.4%
<b>HOMES BUILT BY YEAR</b>	2010 Homes Built 2005 or later	0.4%	0.4%	0.4%
	2010 Homes Built 2000 to 2004	3.4%	3.2%	3.2%
	2010 Homes Built 1990 to 1999	2.6%	3.6%	3.6%
	2010 Homes Built 1980 to 1989	1.7%	3.8%	3.5%
	2010 Homes Built 1970 to 1979	8.6%	8.1%	7.8%
	2010 Homes Built 1960 to 1969	11.2%	11.5%	12.6%
	2010 Homes Built 1950 to 1959	32.4%	26.5%	27.1%
	2010 Homes Built Before 1949	41.9%	44.4%	42.3%
<b>HOME VALUES</b>	2010 Home Value \$1,000,000 or More	0.5%	0.4%	0.4%
	2010 Home Value \$500,000 to \$999,999	4.9%	3.6%	3.4%
	2010 Home Value \$400,000 to \$499,999	4.0%	3.2%	3.1%
	2010 Home Value \$300,000 to \$399,999	8.6%	7.5%	7.1%
	2010 Home Value \$200,000 to \$299,999	8.5%	12.2%	12.1%
	2010 Home Value \$150,000 to \$199,999	9.3%	13.8%	13.4%
	2010 Home Value \$100,000 to \$149,999	10.7%	14.7%	15.1%
	2010 Home Value \$50,000 to \$99,999	27.4%	23.1%	22.8%
	2010 Home Value \$25,000 to \$49,999	19.2%	12.6%	12.7%
	2010 Home Value Under \$25,000	9.2%	10.1%	10.7%
	2010 Median Home Value	\$86,216	\$116,564	\$114,142
	2010 Median Rent	\$734	\$718	\$693

This information herein is provided without representation or warranty. The information herein is provided to be reliable. The information herein is provided to be reliable. The information herein is provided to be reliable.

## FULL PROFILE

2000-2010 Census, 2018 Estimates with 2023 Projections

Calculated using Weighted Block Centroid from Block Groups

Kyle Nelson

Lat/Lon: 42.4633/-83.1038



REF 1

21505 John R Rd

Hazel Park, MI 48030

1 mi radius 3 mi radius 5 mi radius

	1 mi radius	3 mi radius	5 mi radius	
<b>LABOR FORCE</b>	2018 Est. Labor Population Age 16 Years or Over	12,910	112,517	318,435
	2018 Est. Civilian Employed	58.1%	58.3%	54.9%
	2018 Est. Civilian Unemployed	3.6%	4.0%	4.0%
	2018 Est. in Armed Forces	-	-	-
	2018 Est. not in Labor Force	38.4%	37.8%	41.0%
	2018 Labor Force Males	49.3%	48.3%	47.4%
	2018 Labor Force Females	50.7%	51.7%	52.6%
<b>OCCUPATION</b>	2010 Occupation: Population Age 16 Years or Over	7,493	65,523	174,820
	2010 Mgmt, Business, & Financial Operations	10.9%	13.7%	13.6%
	2010 Professional, Related	18.4%	21.6%	21.8%
	2010 Service	21.2%	18.5%	19.2%
	2010 Sales, Office	24.6%	24.5%	24.1%
	2010 Farming, Fishing, Forestry	-	0.1%	0.1%
	2010 Construction, Extraction, Maintenance	6.5%	5.4%	5.4%
	2010 Production, Transport, Material Moving	18.5%	16.1%	15.7%
	2010 White Collar Workers	53.8%	59.8%	59.5%
	2010 Blue Collar Workers	46.2%	40.2%	40.5%
<b>TRANSPORTATION TO WORK</b>	2010 Drive to Work Alone	79.8%	82.9%	82.1%
	2010 Drive to Work in Carpool	10.8%	8.0%	8.6%
	2010 Travel to Work by Public Transportation	2.8%	2.5%	2.7%
	2010 Drive to Work on Motorcycle	0.6%	0.2%	0.1%
	2010 Walk or Bicycle to Work	1.9%	2.1%	1.8%
	2010 Other Means	0.3%	0.6%	0.5%
	2010 Work at Home	3.8%	3.7%	4.1%
<b>TRAVEL TIME</b>	2010 Travel to Work in 14 Minutes or Less	21.1%	19.3%	18.6%
	2010 Travel to Work in 15 to 29 Minutes	46.4%	46.9%	41.7%
	2010 Travel to Work in 30 to 59 Minutes	20.5%	26.9%	27.8%
	2010 Travel to Work in 60 Minutes or More	3.4%	4.9%	5.1%
	2010 Average Travel Time to Work	19.8	22.0	22.9
<b>CONSUMER EXPENDITURE</b>	2018 Est. Total Household Expenditure	\$297 M	\$3.02 B	\$8.21 B
	2018 Est. Apparel	\$10.3 M	\$105 M	\$286 M
	2018 Est. Contributions, Gifts	\$18.5 M	\$201 M	\$545 M
	2018 Est. Education, Reading	\$10.8 M	\$115 M	\$315 M
	2018 Est. Entertainment	\$16.4 M	\$168 M	\$456 M
	2018 Est. Food, Beverages, Tobacco	\$46.7 M	\$467 M	\$1.27 B
	2018 Est. Furnishings, Equipment	\$9.76 M	\$102 M	\$276 M
	2018 Est. Health Care, Insurance	\$27.0 M	\$270 M	\$731 M
	2018 Est. Household Operations, Shelter, Utilities	\$92.8 M	\$942 M	\$2.56 B
	2018 Est. Miscellaneous Expenses	\$4.47 M	\$45.0 M	\$122 M
	2018 Est. Personal Care	\$3.88 M	\$39.3 M	\$107 M
2018 Est. Transportation	\$56.6 M	\$570 M	\$1.54 B	

This report was produced using data from private and government sources deemed to be reliable. The information herein is provided without warranty of any kind.

