

# 7450 Two Notch Road

Columbia, South Carolina

## Property Features

- ±0.75 acres with 2,810 SF building located between I-20 and Columbia Place Mall on US Highway 1
- Two curb cuts with center retention line
- Site is ideal for Fast Casual or C-Store concepts
- Zoning: GC, General Commercial (Richland County)
- Traffic Counts (2016): 29,600 VPD (1,700 increase over 2015)
- Sale Price: \$650,000

For more information:

**Patrick Palmer, CCIM**

+1 803 556 3340

ppalmer@naicolumbia.com

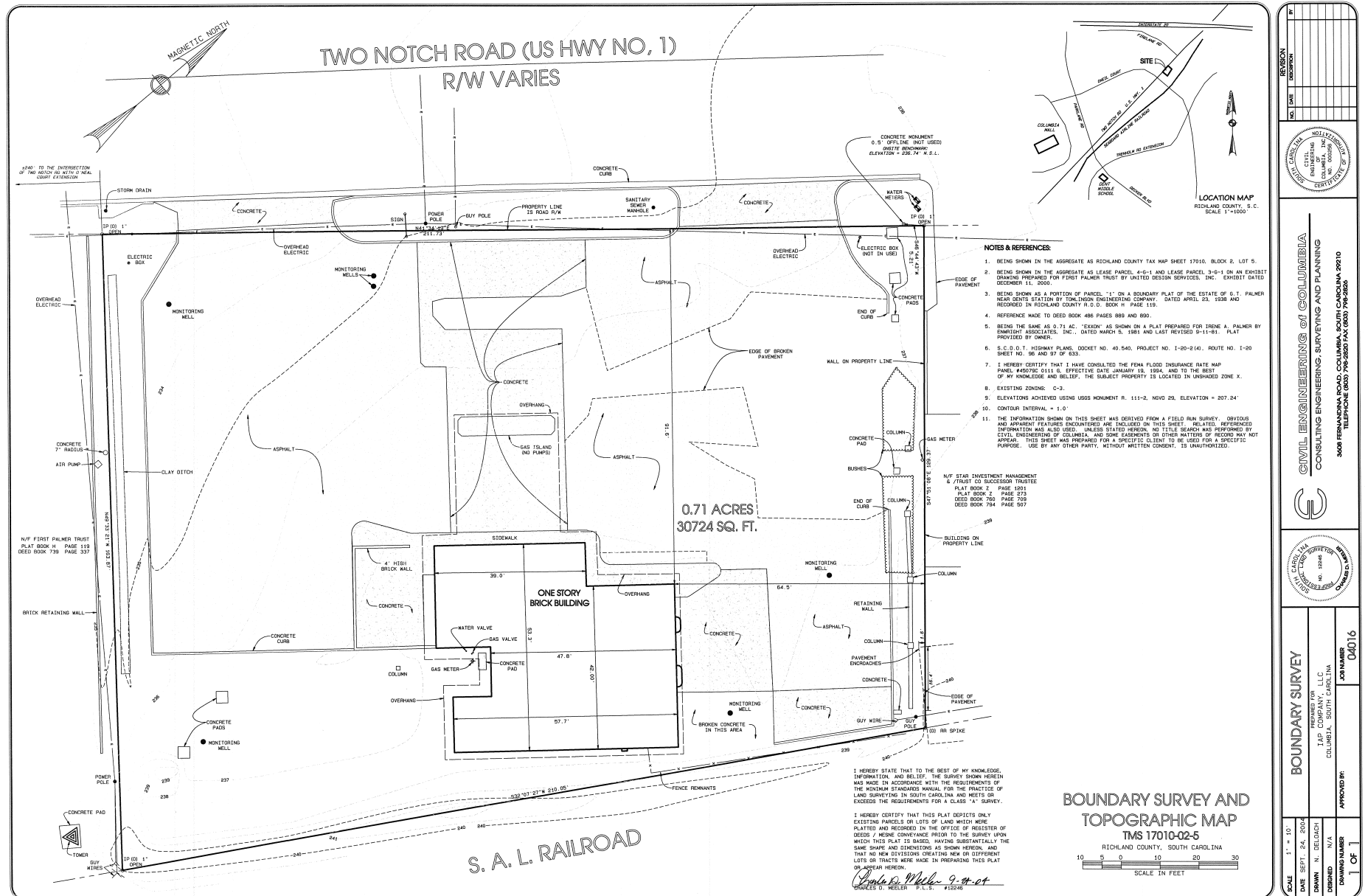


For Sale

±0.75 Acres

Retail Site

# Property Survey



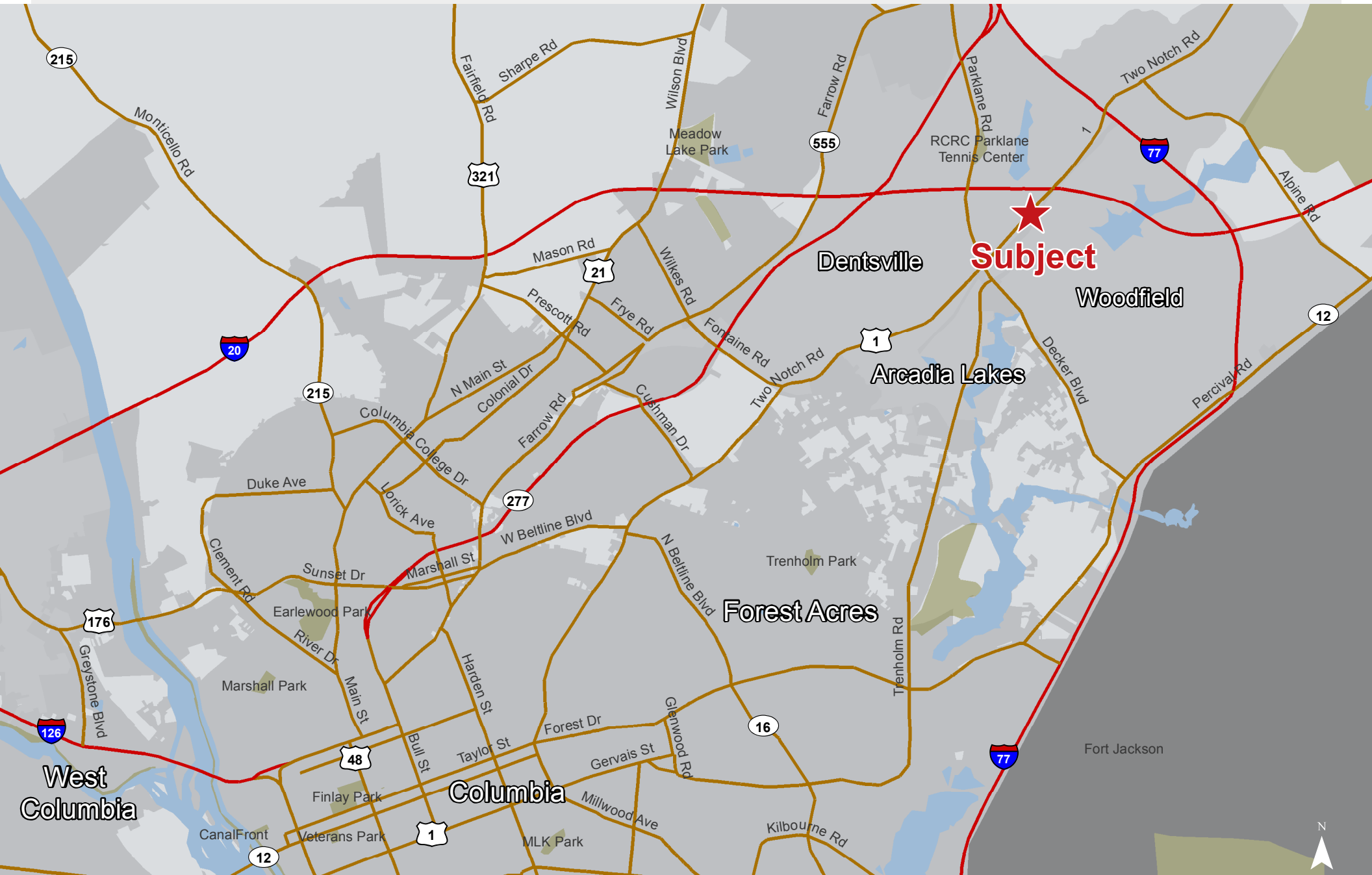




Map Updated: Tuesday, May 16, 2017. This information submitted is not guaranteed. Although obtained from reliable sources, all information should be confirmed prior to use or reliance upon the information. This document may not be reproduced in whole or in part without the express written consent of NAI Avant.



## Location



Map Updated: Tuesday, May 16, 2017. This information submitted is not guaranteed. Although obtained from reliable sources, all information should be confirmed prior to use or reliance upon the information. This document may not be reproduced in whole or in part without the express written consent of NAI Avant.

# NAI Columbia

## Demographic Profile

## Demographic Profile

Oneil Court and Two Notch Road - Columbia, South Carolina

	1 Mile	3 Miles	5 Miles		1 Mile	3 Miles	5 Miles		1 Mile	3 Miles	5 Miles
<b>Population</b>				<b>2016 Age Distribution</b>				<b>Median Household Income</b>			
2010 Census	7,688	45,577	114,874	0 - 4	7.9%	6.8%	6.4%	2016 Estimate	\$39,189	\$43,698	\$44,907
2016 Estimate	8,391	47,607	120,340	5 - 9	6.2%	6.2%	5.9%	2021 Projection	\$42,419	\$49,902	\$51,272
2021 Projection	8,793	49,839	126,137	10 - 14	5.8%	6.1%	5.8%				
% Chg. 2016-2021	4.8%	4.7%	4.8%	15 - 19	6.6%	6.2%	8.6%	<b>Average Household Income</b>			
				20 - 24	9.8%	6.8%	10.6%	2016 Estimate	\$51,026	\$60,141	\$66,831
<b>Households</b>				25 - 34	19.3%	15.2%	15.1%	2021 Projection	\$55,020	\$65,467	\$72,694
2010 Census	3,374	18,767	42,509	35 - 44	12.3%	12.2%	11.3%				
2016 Estimate	3,642	19,454	44,687	45 - 54	12.0%	13.8%	12.4%	<b>Per Capita Household Income</b>			
2021 Projection	3,789	20,300	46,856	55 - 64	8.9%	12.1%	11.3%	2016 Estimate	\$22,450	\$24,855	\$26,264
				65 - 74	4.6%	7.2%	6.5%	2021 Projection	\$23,963	\$26,909	\$28,361
<b>Families</b>				75 - 84	3.8%	5.2%	4.4%				
2010 Census	1,876	11,812	26,832	85+	2.7%	2.1%	1.9%	<b>2016 Household Income Dist.</b>			
2016 Estimate	1,996	12,020	27,675					Less than \$15,000	13.3%	11.8%	13.4%
2021 Projection	2,059	12,422	28,742	<b>Median Age</b>				\$15,000 - \$24,999	14.9%	14.2%	12.8%
				2010 Census	31.6	37.1	33.3	\$25,000 - \$34,999	15.1%	14.0%	13.6%
<b>2016 Dist. by Race &amp; Ethnicity</b>				2016 Estimate	32.6	37.7	34.4	\$35,000 - \$49,999	18.5%	15.1%	14.1%
White Alone	22.7%	35.0%	39.6%	2021 Projection	33.0	38.1	35.1	\$50,000 - \$74,999	18.8%	18.7%	16.8%
Black Alone	64.8%	54.0%	50.8%					\$75,000 - \$99,999	10.8%	11.2%	11.5%
American Indian Alone	0.4%	0.4%	0.4%	<b>Average Household Size</b>				\$100,000 - \$149,999	6.0%	10.1%	10.1%
Asian Alone	3.3%	3.0%	2.7%	2010 Census	2.21	2.37	2.39	\$150,000 - \$199,999	1.3%	2.5%	3.8%
Pacific Islander Alone	0.3%	0.2%	0.2%	2016 Estimate	2.25	2.40	2.41	\$200,000 and Up	1.2%	2.3%	4.0%
Some Other Race Alone	5.3%	4.6%	3.4%	2021 Projection	2.27	2.41	2.42				
Two or More Races	3.3%	2.9%	2.8%					<b>2016 Business Data</b>			
Hispanic Origin (Any Race)	9.7%	9.1%	7.8%	<b>2016 Housing Data</b>				Total Businesses:	562	2,135	4,516
				Owner Occ. Housing Units	1,032	10,516	25,111	Total Employees:	6,128	25,585	53,469
				Renter Occ. Housing Units	2,610	8,938	19,577				