



CityView OFFICE

A RARE OPPORTUNITY TO
BE PART OF AUSTIN'S SOUTH
CONGRESS EXPERIENCE.

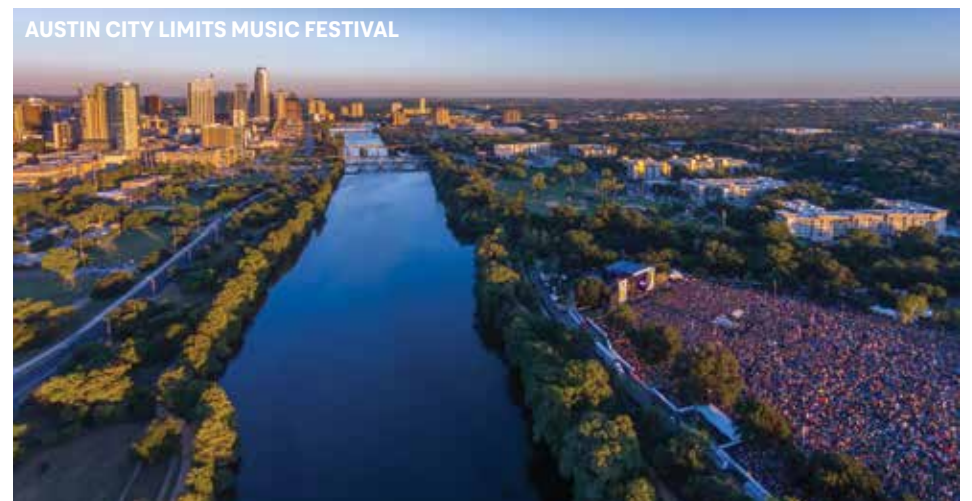
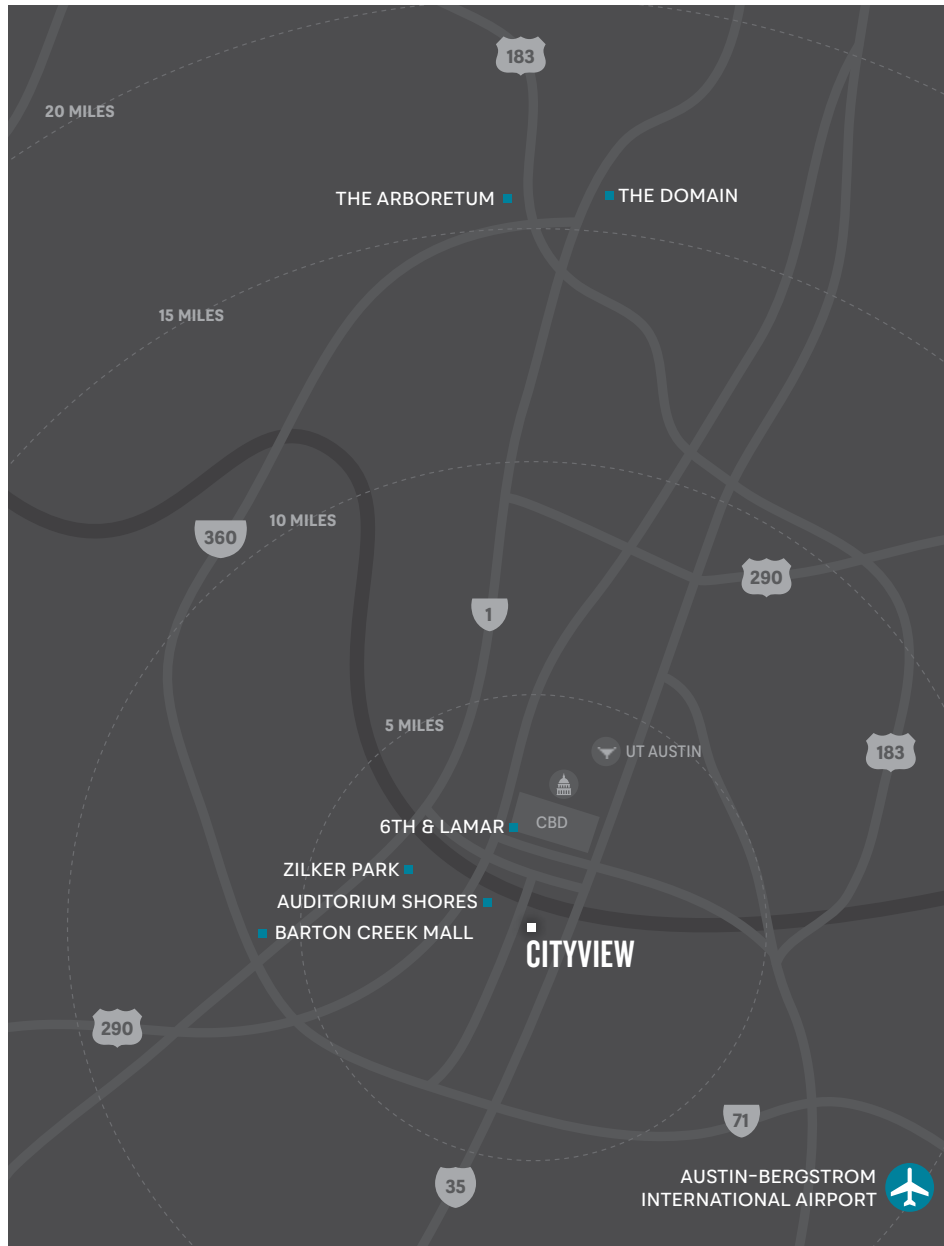
**SOME OF THE MOST EXCLUSIVE
HOTELS AND MOST INNOVATIVE
RESTAURANTS AND ENTERTAINMENT
VENUES IN AMERICA NOW CALL
SOUTH CONGRESS HOME.**



SURROUNDED BY GREAT DINING, SHOPPING AND HOTELS



STRATEGICALLY LOCATED AT THE CENTER OF ALL THAT AUSTIN HAS TO OFFER





AUSTIN, TEXAS IS THE
#1 BEST PLACE TO LIVE

—U.S. News 2/7/17

#1
CITY FOR
JOB SEEKERS
—NerdWallet 12/19/16



0%
STATE AND LOCAL
INCOME TAX

#3
CITY CREATING
THE MOST TECH JOBS
IN 2017
—Forbes 3/17/17

#1
U.S. CITY FOR
MILLENNIALS
—Nestpick 4/19/17



1 OF THE 10
BEST CITIES
TO RAISE A
FAMILY
—SmartAsset 2/2/17



#1
FASTEST GROWING
LARGE CITY
—WalletHub 10/2/17



1 OF THE 10
MOST EDUCATED
CITIES IN AMERICA
—WalletHub 7/25/17

THE PROJECT.

CITYVIEW IS CREATING A NEW FOCAL POINT FOR THE ENERGY AND EXCITEMENT OF SOUTH CONGRESS.

CityView is a 4-story building which offers a full floor—12,500 square feet of space—above a 30,000-square-foot Equinox. CityView is adjacent to Music Lane, which will be home to the future Soho House Austin and will offer a diverse range of on-site dining, retail, and entertainment. CityView offers a rare opportunity for businesses looking for an iconic location that appeals to today's most in-demand employees. Music Lane will be an unequalled architectural and cultural presence in the heart of South Congress.





SOHO
HOUSE

SOHO HOUSE

The hotel, club, and restaurant offerings of Soho House perfectly complement Music Lane's retail and creative-office space, giving the project a 24-7 buzz.

OTHER AREA HOTELS

Proximity to Hotel Magdalena, Hotel Saint Cecilia, Hotel San José, the Austin Motel, and South Congress Hotel put the project at the epicenter of Austin's festival and conference scene.

LOCALLY INSPIRED DESIGN

Texas-based, internationally recognized architecture firm Lake | Flato has designed Music Lane to stand out as a signature structure, while also giving it the feel of a place that has been there for decades.

INVITING OUTDOOR SPACES

Shaded courtyards, paseos, and expansive outdoor decks and rooftop spaces will encourage visitors to linger, energizing the property and reinforcing its role as a retail destination.

EQUINOX

EQUINOX

This upscale, full-service fitness club from Equinox features unrivaled fitness classes and personal training, performance-inspiring studios, and luxury amenities.

ON-SITE PARKING

On-site structured parking spaces will create a level of access and convenience seldom seen in urban retail districts.

ECLECTIC MERCHANDISING

Open Realty Advisors is assembling a thoughtfully curated collection of brands that will be true to the eclectic appeal of South Congress, while also reflecting its growing status as a premier retail destination.

EQUINOX.

THIS HIGH-PERFORMANCE FITNESS CLUB OFFERS BESPOKE EXPERIENCES AND UNPARALLELED SERVICES.

Equinox operates 89 upscale, full-service clubs, with more than 70,000 members throughout the US as well as international locations in London, Toronto, and Vancouver. The company offers an integrated selection of Equinox-branded programs, services and products, including strength and cardio training, studio classes, personal training, spa services and products, apparel and food/juice bars. In its 26-year history, Equinox has developed a lifestyle brand that represents service, value, quality, expertise, innovation, attention to detail, market leadership and results.



PHOTOS ARE FROM OTHER EQUINOX LOCATIONS

SOUTH CONGRESS HOTELS.



HOTEL MAGDALENA



HOTEL SAN JOSÉ



HOTEL MAGDALENA



HOTEL SAINT CECILIA



SOUTH CONGRESS HOTEL



AUSTIN MOTEL

THE SITE.

CITYVIEW

FLOOR 4
12,500 RSF OFFICE

MUSIC LANE

BUILDING 3

SOHO HOUSE

BUILDING 1

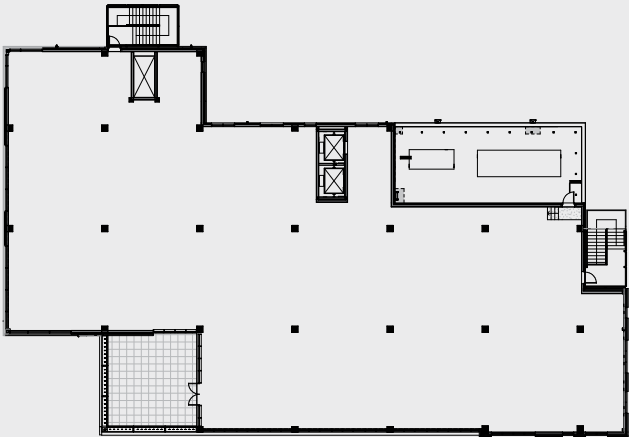


CITYVIEW.

1007 S. CONGRESS AVE. | 12,500 RSF OFFICE AVAILABLE | 2.75/1,000 PARKING RATIO



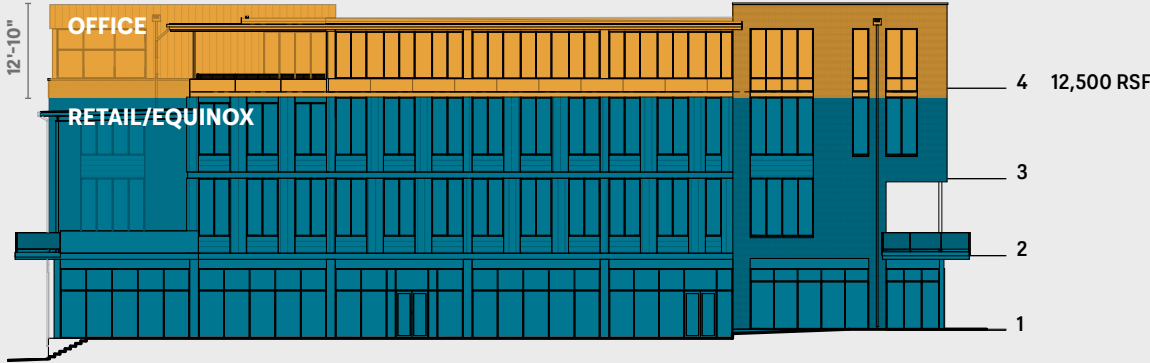
TYPICAL FLOOR PLATE



PRIVATE PATIO

CONGRESS AVE

BUILDING ELEVATION



THE TEAM.

OFFICE LEASING

Travis Dunaway
d 512.682.5570
tdunaway@endeavor-re.com

Anne Swift
d 512.682.5564
m 512.699.8811
aswift@endeavor-re.com



DEVELOPER

Turnbridge Equities is developing CityView. Founded by Andrew Joblon, Turnbridge Equities has projects in major gateway cities including Austin, Miami, and New York. Their holdings span all classes of real estate, with a concentration in mixed-use. Since its inception in 2014, the privately held company has assembled a portfolio worth more than \$650 million.



OFFICE LEASING

Born in Austin, Endeavor has grown into the largest full-service commercial real estate company in Central and South Texas. The company's team of more than 100 professionals delivers specialized expertise in project leasing, tenant representation, property management, sales, and development. Endeavor's full-service approach gives it insight and market knowledge that strengthen each of its individual offerings, with every engagement benefiting from the diverse experience and robust network of the entire Endeavor team.



ARCHITECT

Lake | Flato Architects has gained national recognition for architecture that is rooted to its place and successfully merges with the landscape. In collaboration with their clients, Lake | Flato creates buildings that are tactile and modern, environmentally responsible and authentic, artful and crafted. Based in San Antonio, Lake | Flato was responsible for the design of the popular Hotel San José on South Congress, and recently completed the design of the new Austin Central Library.



LANDSCAPE ARCHITECT

dwg. is an award-winning landscape architecture firm recognized nationally and internationally for forward-thinking concepts, meaningful relationships, and multi-faceted design expertise. The firm's designs are environmentally responsive, tactile, modern, and artfully composed. They are leaders in sustainable design, where landscape architecture becomes an integral facet of a project's infrastructure. The results of their design process reflect a strong sense of place shaped by the culmination of environment and social expression.