

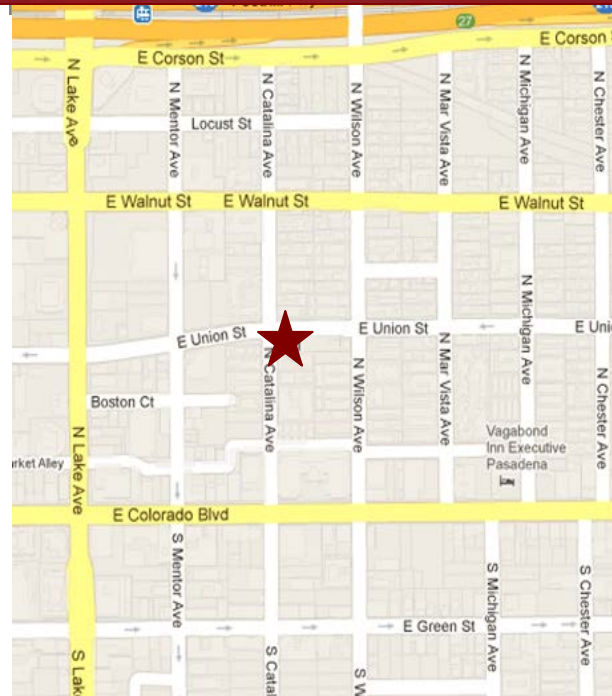
# UNION CATALINA BUILDING



## 1010 EAST UNION STREET, PASADENA, CALIFORNIA

FOR LEASE

- AVAILABLE SPACE:** Suite 110 approx. 2,305 rentable sq. ft.
- RENTAL RATE:** \$2.30 per sq. ft., Modified Gross.
- Tenant shall pay its prorata share of utilities and liability insurance.
- AVAILABLE:** Immediately.
- PARKING:** Five (5) free reserved parking spaces in subterranean garage.
- FEATURES:**
- \* Recently renovated common areas and new restrooms.
  - \* Monument signage possible.
  - \* Charter Cable served building.
  - \* Responsive Management on-site.
  - \* Security Cameras throughout.
  - \* Elevator Served.
  - \* Short walk to Lake Avenue and Colorado Boulevard retail and restaurants.
  - \* Close proximity to "Gold Line" Station.



For Further Information, Contact:

Carole Walker  
cwalker@redstonecre.com  
License No. 01525534

Dan Alle  
dalle@redstonecre.com  
License No. 01017941

(626) 795-2255



# Redstone

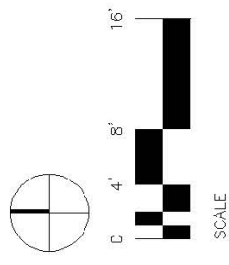
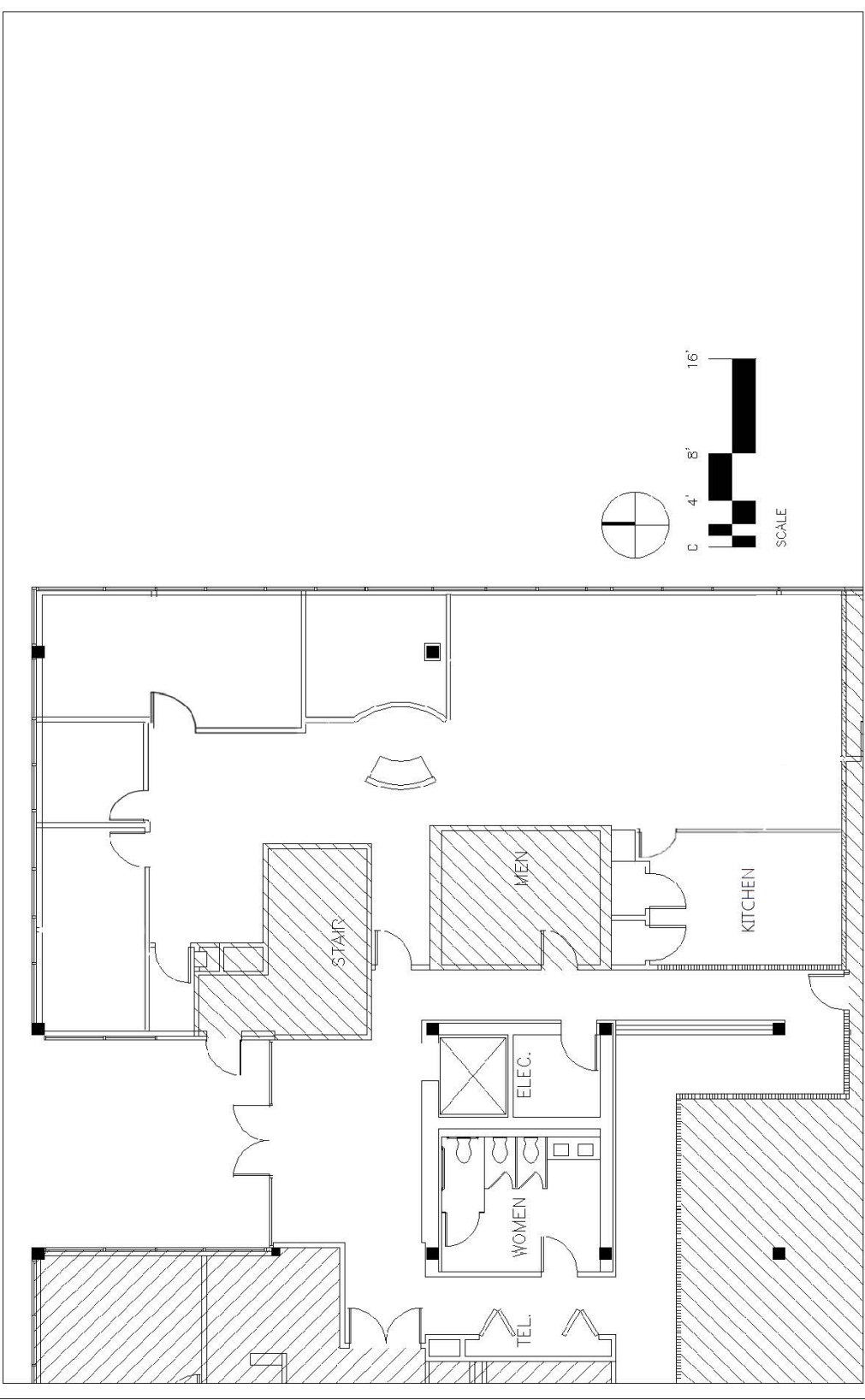
COMMERCIAL REAL ESTATE



[www.redstonecre.com](http://www.redstonecre.com)

301 N. Lake Avenue, Suite 1000, Pasadena, CA 91101

(626) 795-2255 Tel



VACANT  
 1010 E. UNION ST, SUITE 110  
 PASADENA, CA



**Creative Energy**  
 architecture and interiors  
 241 East Colorado Boulevard, Suite 203  
 Pasadena, California 91101  
 phone 626.304.0505 fax 626.304.0715