

**FOR LEASE** > CLASS "A" OFFICE SPACE



# The Slatestone

960 CANTERBURY PLACE, SUITE 210, ESCONDIDO, CA 92025

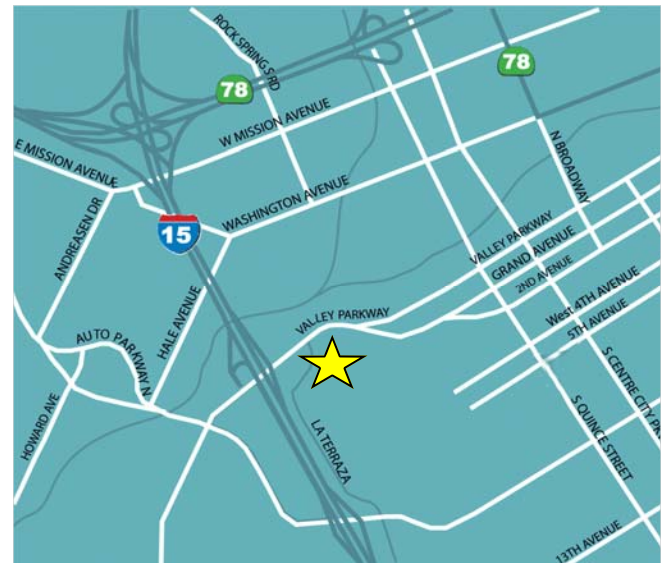


## Building Amenities

- > Excellent freeway location with easy access to I-15 and Hwy 78
- > Elevator serviced
- > High-end lobby improvements
- > Escondido Transit Center (Sprinter) 15 minute walk
- > Proximity to shopping and restaurants
- > 24 Hour Fitness facility within half mile

## Availability

Suite 210 2,748 SF - Available Now  
LEASE RATE: \$2.45/SF + Elec. & Janitorial



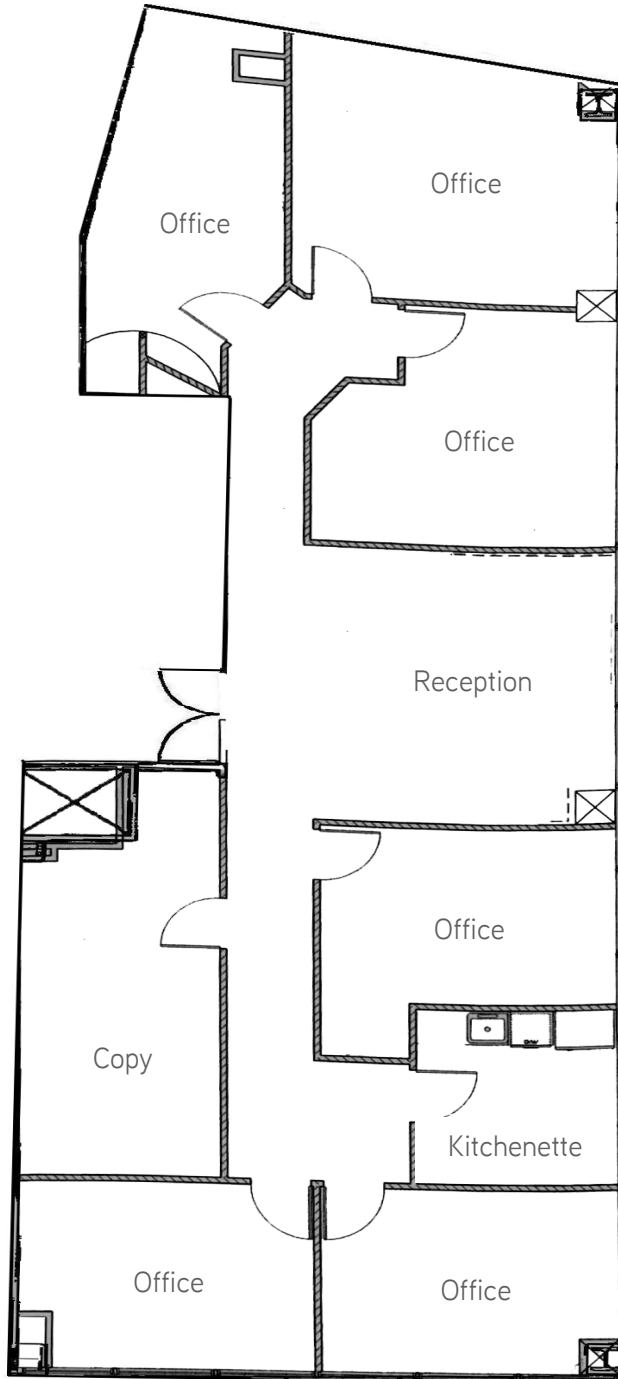
TUCKER HOHENSTEIN  
760 930 7966  
CARLSBAD, CA  
tucker.hohenstein@colliers.com  
Lic# 00999360

CONOR BOYLE  
760 930 7967  
CARLSBAD, CA  
conor.boyle@colliers.com  
Lic# 01813305

COLLIERS INTERNATIONAL  
5901 Priestly Drive, Suite 100  
Carlsbad, CA 92008  
www.colliers.com/carlsbad

## 960 Canterbury Place > Floor Plan

2nd Floor Suite 210  
2,748 SF



### CONTACT US

TUCKER HOHENSTEIN

760 930 7966

CARLSBAD, CA

[tucker.hohenstein@colliers.com](mailto:tucker.hohenstein@colliers.com)

Lic# 00999360

CONOR BOYLE

760 930 7967

CARLSBAD, CA

[conor.boyle@colliers.com](mailto:conor.boyle@colliers.com)

Lic# 01813305

**COLLIERS INTERNATIONAL**

5901 Priestly Drive, Suite100

Carlsbad, CA 92008

[www.colliers.com/carlsbad](http://www.colliers.com/carlsbad)

This document has been prepared by Colliers International for advertising and general information only. Colliers International makes no guarantees, representations or warranties of any kind, expressed or implied, regarding the information including, but not limited to, warranties of content, accuracy and reliability. Any interested party should undertake their own inquiries as to the accuracy of the information. Colliers International excludes unequivocally all inferred or implied terms, conditions and warranties arising out of this document and excludes all liability for loss and damages arising there from. Colliers International is a worldwide affiliation of independently owned and operated companies.

