

CAPE CORAL, FL

2514 Santa Barbara Blvd



5,663 SF Available For Sale or Lease on 1.80 Acres

- Freestanding restaurant building on an outparcel to Publix, Target, and Lowe's Home Improvement
- Exposure to 70,000+ ADT on Veterans Pkwy/ Santa Barbara Blvd
- Centrally located in densely populated Cape Coral

2020 DEMOGRAPHICS	1 MILE	3 MILE	5 MILE
Population	9,566	56,317	150,804
Med HH Income	\$56,731	\$55,874	\$57,016



Noah Jones

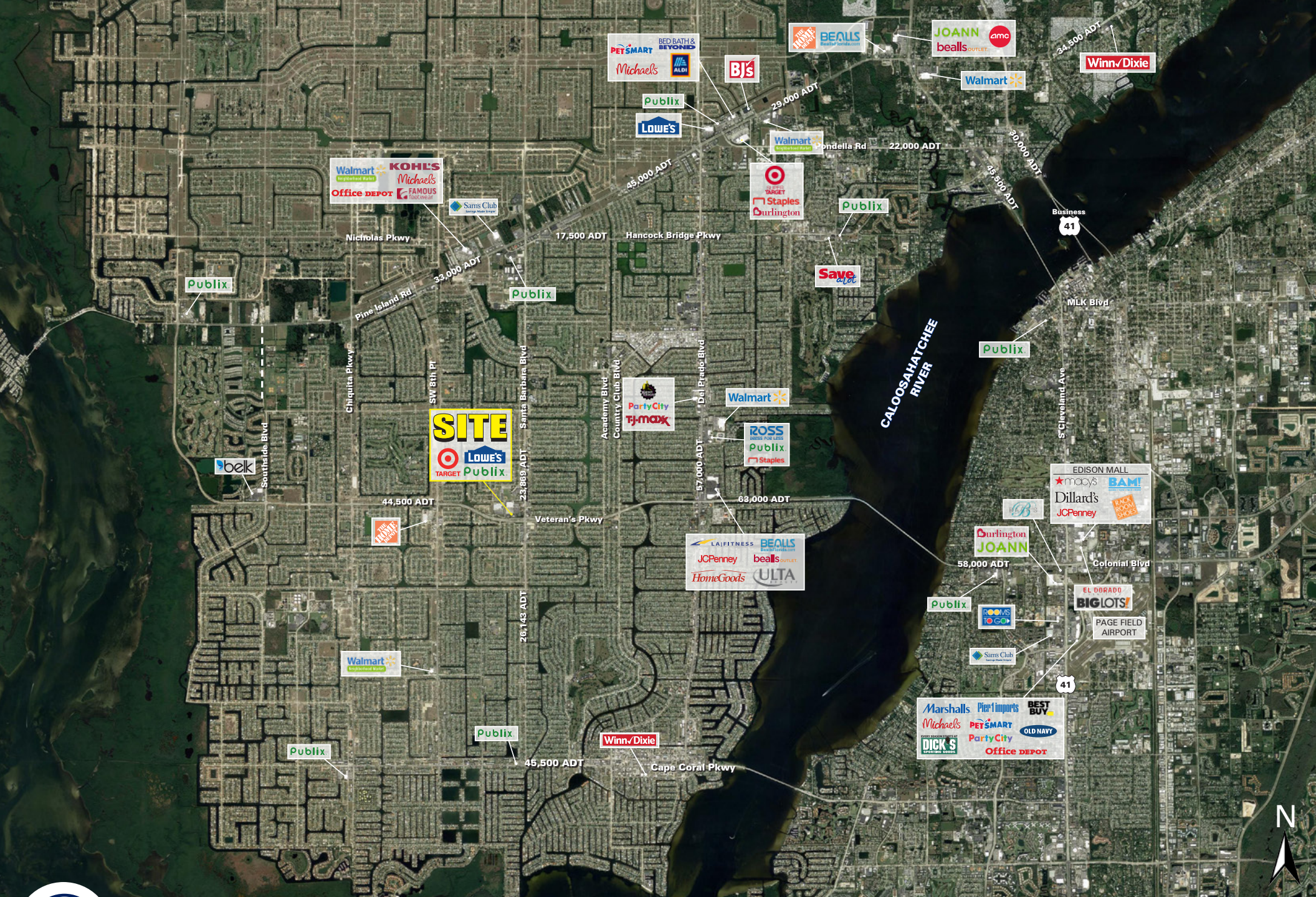
561.424.3018

njones@atlanticrotail.com

ATLANTA | BOSTON | CHARLOTTE | LOS ANGELES | PITTSBURGH | WEST PALM BEACH

ATLANTICRETAIL.COM

© ATLANTIC RETAIL 2020 The information above has been obtained from sources believed reliable. While we do not doubt its accuracy, we have not verified it and make no guarantee, warranty or representation about it.



CAPE CORAL, FL

2514 Santa Barbara Blvd

REGIONAL AERIAL

Noah Jones


561.424.3018

njones@atlanticrotail.com


ATLANTICRETAIL.COM



SITE
5,663 SF
1.80 ACRES

 **\$55,874**
 MED HH INCOME
 IN 3 MILE RADIUS

 **44,500**
 ADT ON
 VETERAN'S PKWY


CAPE CORAL, FL
2514 Santa Barbara Blvd

Noah Jones
 561.424.3018
 njones@atlanticretail.com

ATLANTICRETAIL.COM

