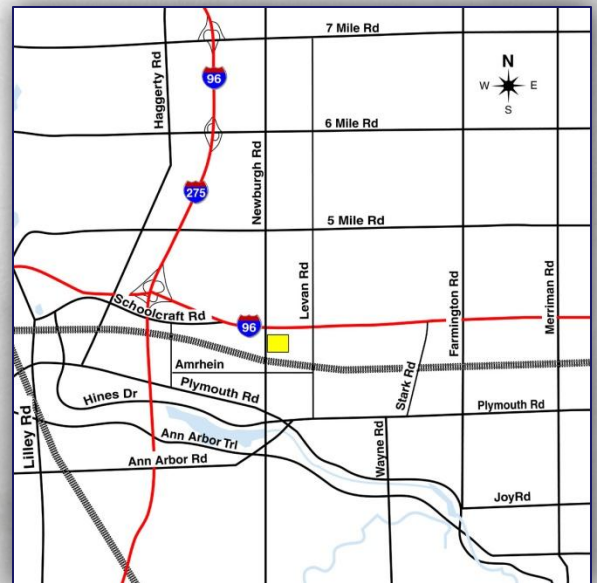


FOR LEASE



13250 Newburgh - Livonia, Michigan

- 15,000 Sq. Ft. Total Available
- 3,000 Sq. Ft. Office
- Outstanding Corporate Image
Location Just off I-96 at Newburgh Rd
- Mezzanine Above Office Area Perfect for Storage
- 18' Ceiling Height
- (1) Truckwell & (1) Grade Level Door
- Power - 400 Amps
- 30 Parking Spaces
- Situated on 1.36 Acres



For More Information, Call:

Gary Sallen

gsallen@signatureassociates.com

248.948.9000

www.signatureassociates.com



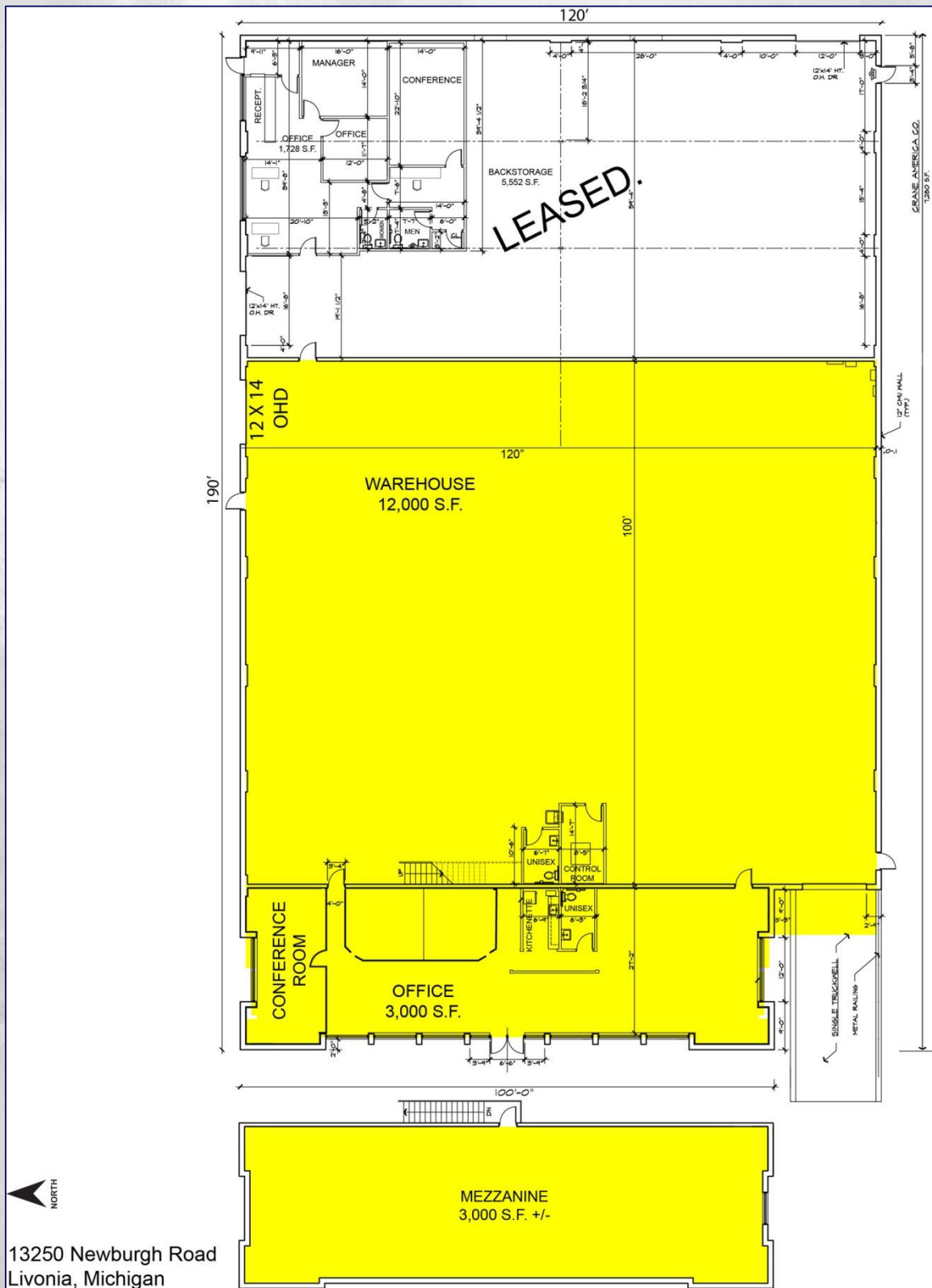
SIGNATURE ASSOCIATES

THE TEAM No Signature. No Results.

INDEPENDENTLY OWNED AND OPERATED

One Towne Square, Suite 1200, Southfield, Michigan 48076

13250 Newburgh - Livonia, Michigan



SIGNATURE ASSOCIATES
THE TEAM No Signature. No Results.
INDEPENDENTLY OWNED AND OPERATED

One Towne Square, Suite 1200, Southfield, Michigan 48076