

2700-B Napa Valley Corporate



AVAILABLE FOR LEASE

\$1.25 / SF / Mo. NNN

±13,304 SF

Features

- Reception Area
- Conference Rooms
- +/- 17 Private Offices
- Cubicle Areas
- Kitchenette
- Mail Room
- Server Room
- Oversized Restrooms w / Showers
- Single-Story Office
- Very Generous Full-Height Windows
- Separately Metered
- Walking Distance to Dining Options
- Located in City of Napa
- Bus Stop Nearby

Note:

Other Office Suites Ranging from 3,000
— 14,245 SF Exist in Complex
Please Inquire



Cathy D'Angelo Holmes
(707) 304-3338
cholmes@cnapavalley.com
Lic.#01355085

Michael J. Moffett
(707) 479-1976
mmoffett@cnapavalley.com
Lic.#00946472



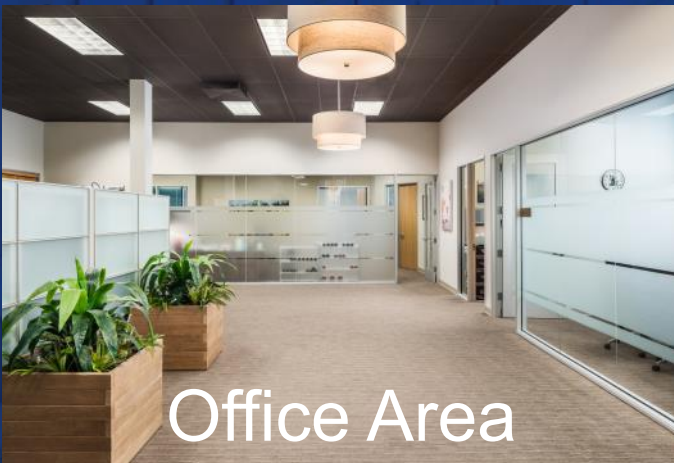
1040 MAIN ST. #101
NAPA, CA 94559



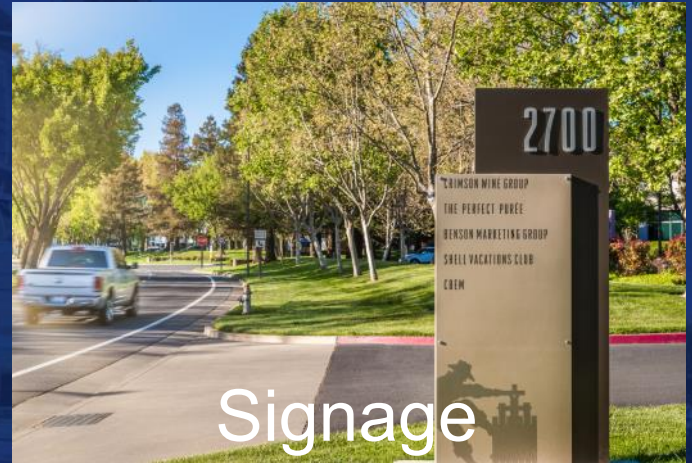
Reception



Conference Room



Office Area



Signage



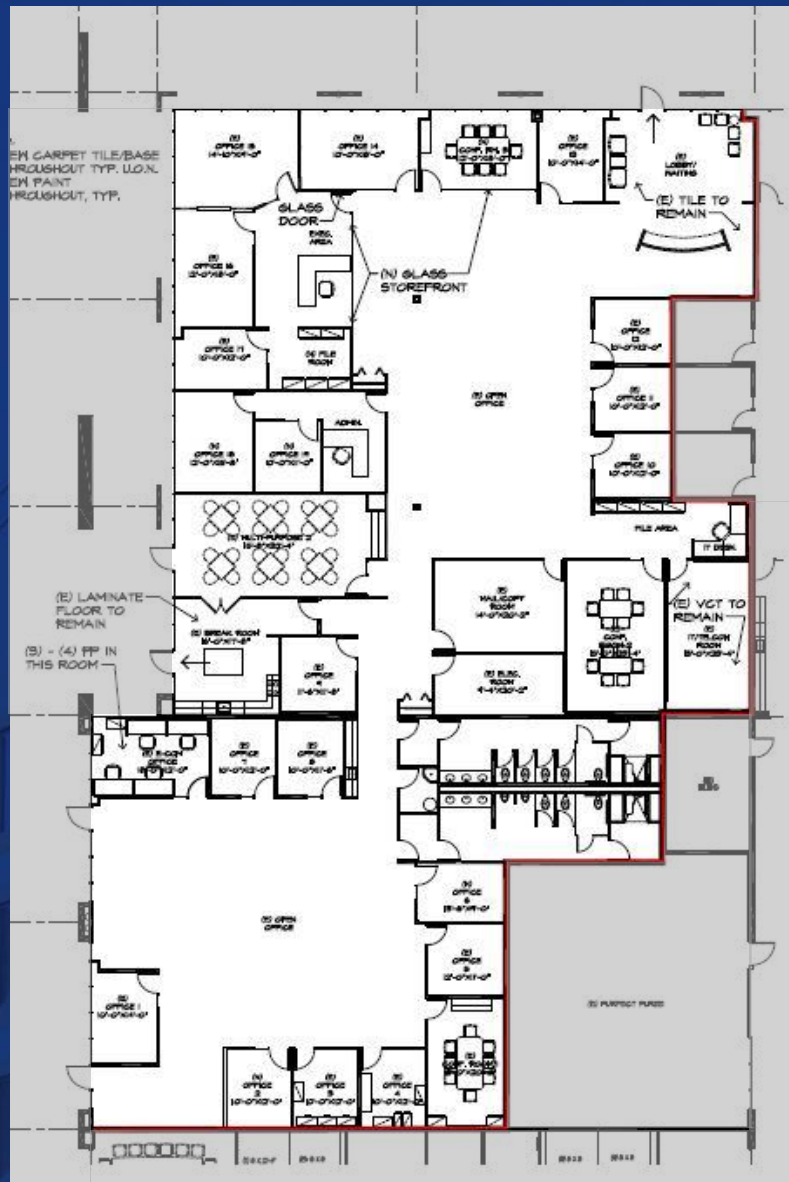
Cathy D'Angelo Holmes
(707) 304-3338
cholmes@cnapavalley.com
Lic.#01355085

Michael J. Moffett
(707) 479-1976
mmoffett@cnapavalley.com
Lic.#00946472



1040 MAIN ST. #101
NAPA, CA 94559

Floorplan



Available

Leased



Cathy D'Angelo Holmes
 (707) 304-3338
 cholmes@cnapavalley.com
 Lic.#01355085

Michael J. Moffett
 (707) 479-1976
 mmoffett@cnapavalley.com
 Lic.#00946472



1040 MAIN ST. #101
 NAPA, CA 94559