

OFFICE SPACE
FOR LEASE



5% COMMISSION TO PROCURING BROKER

POINT WEST EXECUTIVE PLAZA
1451 RIVER PARK DRIVE
SACRAMENTO, CA

PROPERTY FEATURES:

- **Creative Office Layouts**
- **Free and Abundant Parking**
- **Centrally located with easy access to all major freeways and the American River Parkway**
- **Easy Access to Downtown / Midtown via Highway 160**
- Attractive Office Building in the Heart of the Desirable Point West Submarket
- On-Site Leasing and Management Office
- On-Site Common Area Conference Center (Two Common Area Conference Rooms)
- On-Site Common Area Board Room for up to 25 People
- Mature Landscaping with Beautiful Central Courtyard Area with Water Feature
- Walking Distance to Robust Amenity Base Including Arden Fair Mall, Cal EXPO, and Several Restaurants/Hotels

PROJECT REFRESH IS COMPLETE!

- **Enhanced Building Common Area Entryways**
- **New Common Area Corridor LED Lighting**
- **New Suite Entry Doors**
- **New Common Area Flooring**
- **Landscape Refresh**



Lic. #00616335
400 Capitol Mall Suite 1800
Sacramento, CA 95814
www.cushmanwakefield.com

1451 RIVER PARK DRIVE

SACRAMENTO, CA

OFFICE SPACE
FOR LEASE

PROPERTY LOCATION:



AVAILABILITIES:

Suite 120	±1,304 RSF Available in 30 days
Suite 195	±977 RSF
Suite 213	±1,515 RSF
Suite 200	±1,698 RSF
Suite 251	±1,425 RSF

For more information, please contact:

SEAN MULLEN

Associate Director
(916) 288 4811

sean.mullen@cushwake.com
Lic. #01845406

ZACH MOSLE, CCIM

Senior Associate
(916) 329 1543

zach.mosle@cushwake.com
Lic. #01924595



CUSHMAN &
WAKEFIELD

Lic. #00616335
400 Capitol Mall Suite 1800
Sacramento, CA 95814
www.cushmanwakefield.com

The depiction in the included photograph of any person, entity, sign, logo or property, other than Cushman & Wakefield's (C&W) client and the property offered by C&W is incidental only, and is not intended to connote any affiliation, connection, association, sponsorship or approval by or between that which is incidentally depicted and C&W or its client. This listing shall not be deemed an offer to lease, sublease or sell such property; and, in the event of any transaction for such property, no commission shall be earned by or payable to any cooperating broker except if otherwise provided pursuant to the express terms, rates and conditions of C&W's agreement with its principal, if, as and when such commission (if any) is actually received from such principal. (A copy of the rates and conditions referred to above with respect to this property is available upon request.)

1451 RIVER PARK DRIVE

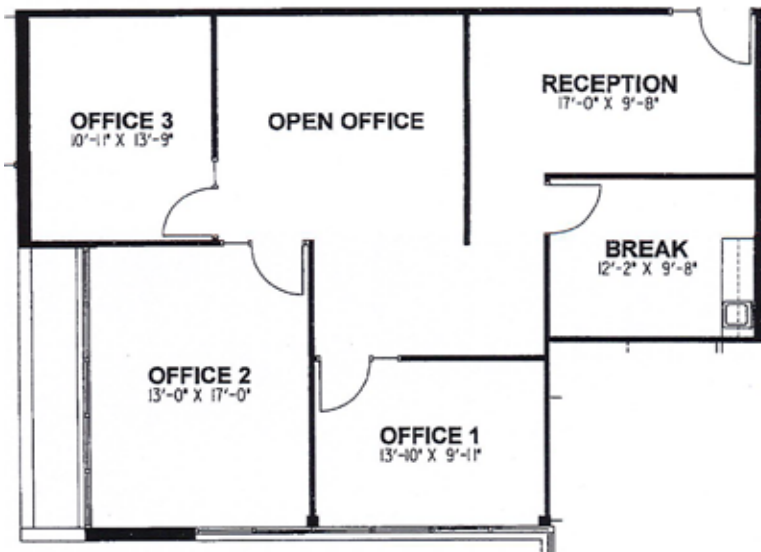
SACRAMENTO, CA

OFFICE SPACE
FOR LEASE

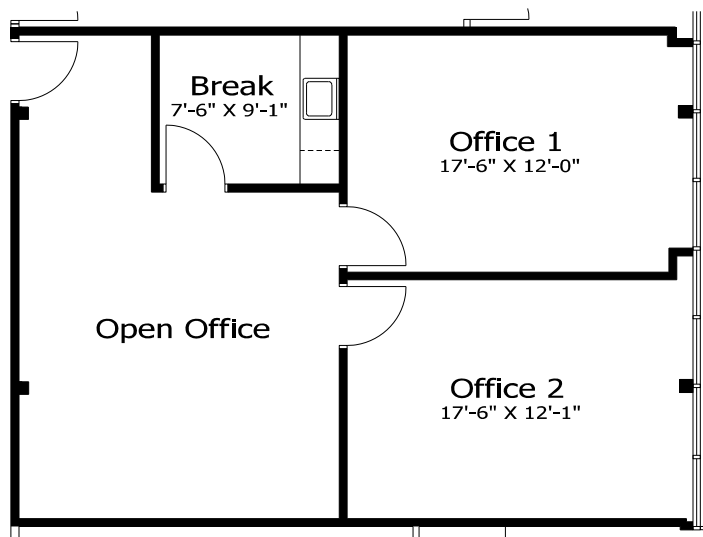
FLOOR PLANS:

Suite 120 ±1,304 RSF

Available in 30 days



Suite 195 ±977 RSF



1451 RIVER PARK DRIVE

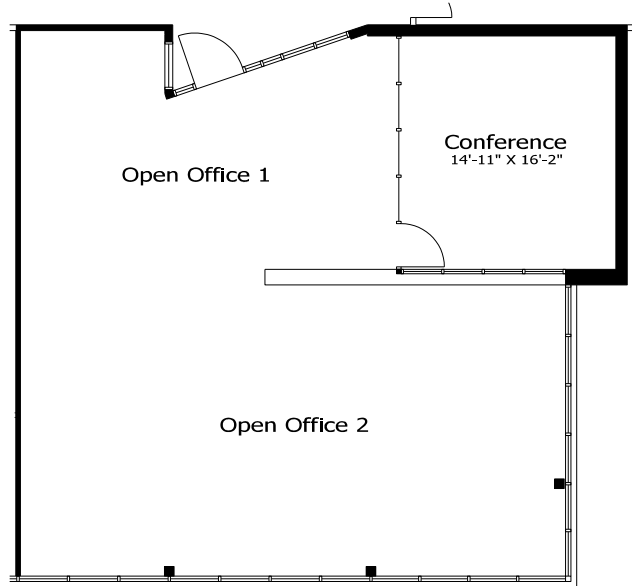
SACRAMENTO, CA

OFFICE SPACE
FOR LEASE

FLOOR PLANS:

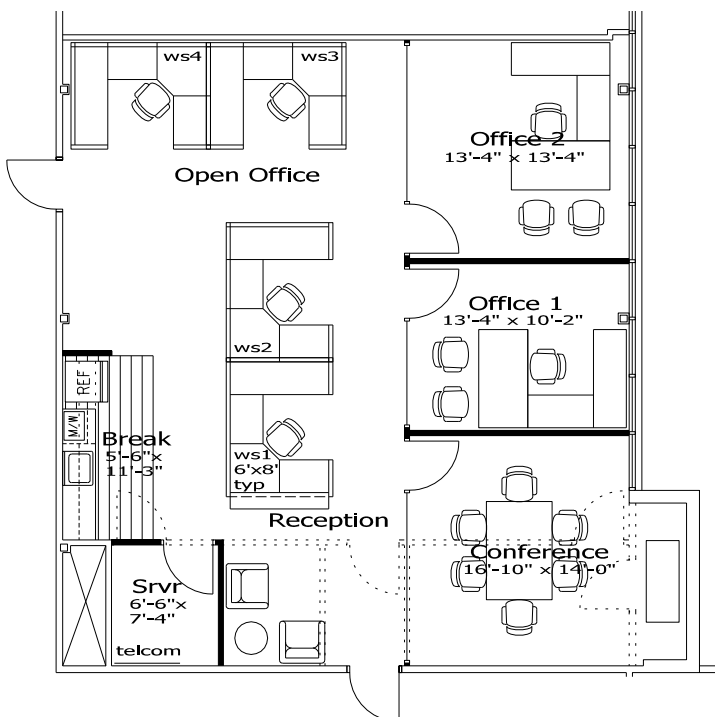
Suite 200 ±1,698 RSF

Available Q1-2020



Suite 213 ±1,515 RSF

New Move-In Ready Improvements



Suite 251 ±1,425 RSF

(Hypothetical configuration)

