



SHELBY DISTRIBUTION CENTER

Partnership. Performance.



RARE VACANCY

AVAILABLE FOR LEASE

Property Overview

- Rare vacancy in the Southeast Industrial Submarket
- 11,352 sf available (1,185 sf office & 10,167 sf warehouse)
- 22' clear height
- 3 dock doors and 1 drive-in door
- 112' deep truck court
- Wet piped sprinkler system

6045 | 6075 | 6005

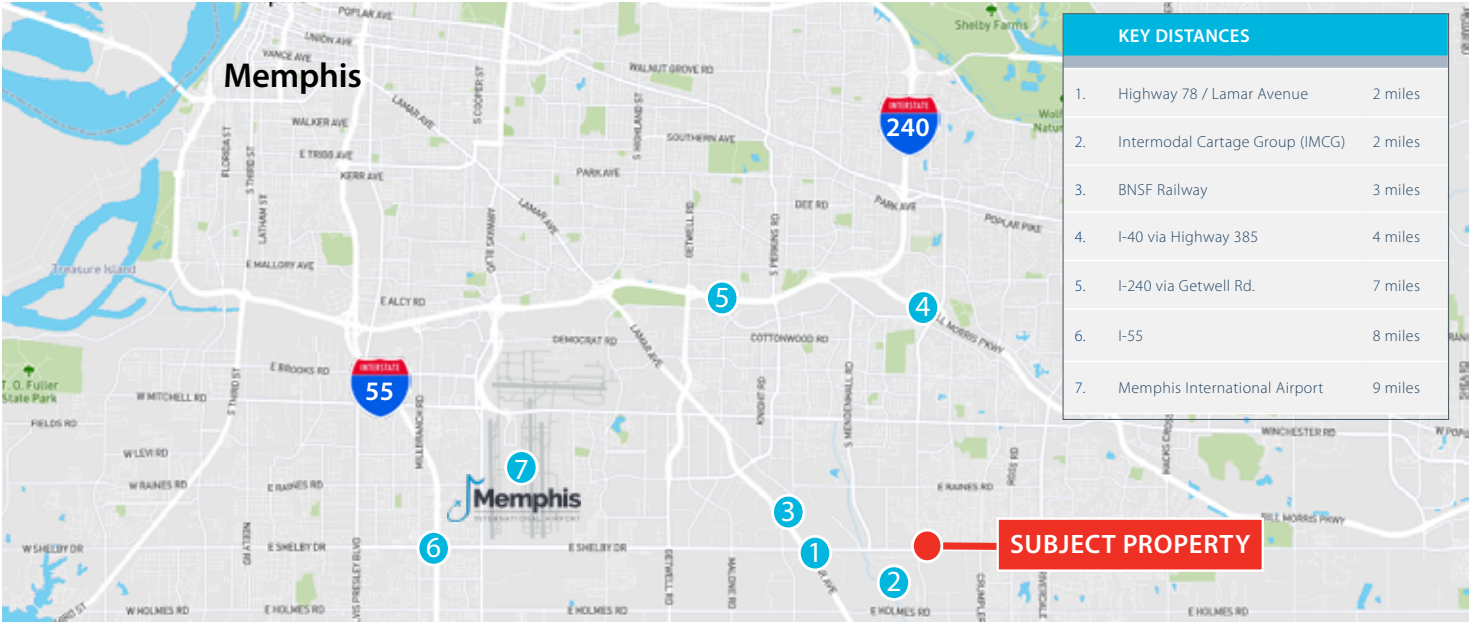
EAST SHELBY DRIVE
MEMPHIS, TN

Avison Young
5350 Poplar Avenue, Suite 205
Memphis, TN 38119
901.231.1400

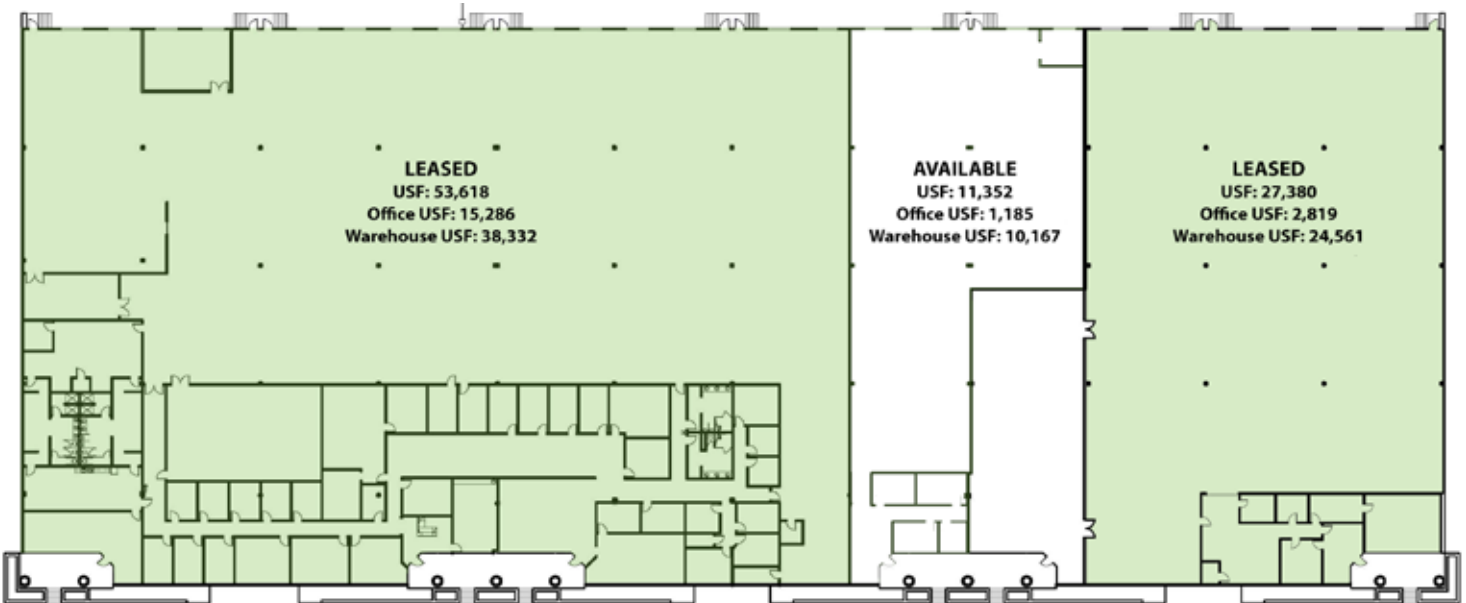
Michael Donahoe, Vice President
D: 901.231.1402
C: 901.230.0601
michael.donahoe@avisonyoung.com



Distance Map



Site Plan



**AVISON
YOUNG**

P PLYMOUTH REIT



Partnership. Performance.

For further information or to schedule a tour, please contact:

Michael Donahoe, Vice President
D: 901.231.1402
C: 901.230.0601
michael.donahoe@avisonyoung.com

Avison Young
5350 Poplar Avenue, Suite 205
Memphis, Tennessee 38119
Phone: 901.231.1400 Fax: 901.231.1399

**AVISON
YOUNG**

**BEST
MANAGED
COMPANIES**
Platinum member

avisonyoung.com

© 2019 Avison Young. All rights reserved.

E. & O.E.: The information contained herein was obtained from sources which we deem reliable and, while thought to be correct, is not guaranteed by Avison Young. Date of publication: 12/2018