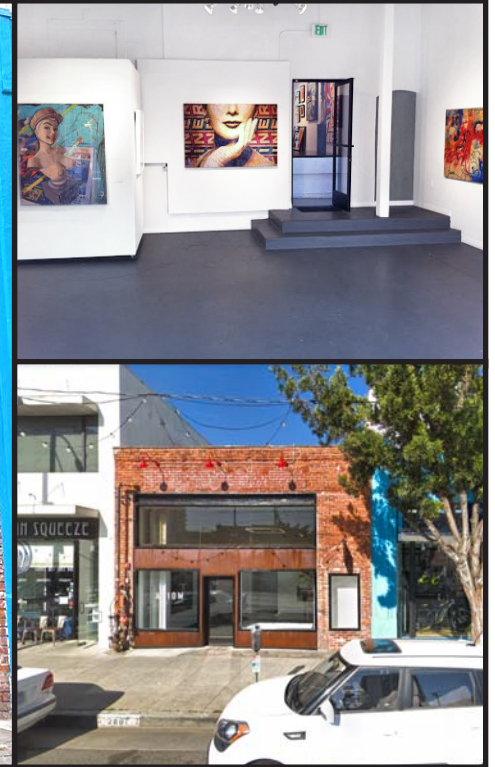




# MAIN STREET RETAIL SPACE FOR LEASE



**2801 MAIN STREET, SANTA MONICA, CA 90405**

## SIZE:

Approximately 1,400 square feet

## RATE:

\$4.95 per square foot per month, NNN  
(NNN estimated to be \$1.10 per square foot per month)

## PARKING:

Ample parking in public lots

## TERM:

3-5 Years

**AVAILABLE IMMEDIATELY**

**GREG ECKHARDT**

**310.395.2663 x103**

**GECKO@PARCOMMERCIAL.COM**

**Lic# 01255469**

1250 6th St., #303, Santa Monica, CA 90401 • 310.395.2663 • [www.parcommercial.com](http://www.parcommercial.com)

- **Great visibility with Main Street frontage and tremendous daily pedestrian and automobile traffic**
- **Neighbors include Jameson's Irish Pub, Lula Cocina Mexicana, Starbucks, Bullet Proof Coffee and more**
- **Close proximity to the beach and Downtown Santa Monica**
- **High income area with strong demographics and eclectic mix of retailers**





# AREA MAPS

- 1.) Chinois
- 2.) Coffee Bean & Tea Leaf
- 3.) La Vecchia Cucina
- 4.) Sea Colony Apartments
- 5.) The Shores Apartments
- 6.) Sea Colony II Apartments

- 7.) CVS/Venice Renaissance Apartments
- 8.) Starbucks
- 9.) Library Alehouse



**2801 Main Street - FOR LEASE**



**GREG ECKHARDT**

**310.395.2663 x103**

**GECKO@PARCOMMERCIAL.COM**

**Lic# 01255469**

1250 6th St., #303, Santa Monica, CA 90401 • 310.395.2663 • [www.parcommercial.com](http://www.parcommercial.com)

All information furnished is from sources deemed reliable and which we believe to be correct, but no representation or guarantee is given as to its accuracy and is subject to errors and omissions. All measurements are approximate and have not been verified by Broker. You are advised to conduct an independent investigation to verify all information.