

3265 Meridian Parkway

Meridian Business Campus at Weston (I-75 & Sawgrass Expressway)

3265 Meridian Parkway, located near the main entrance of Meridian Business Campus, offers image-conscious businesses a creatively designed, multi-use facility. 3265 has the exterior appearance of a prestigious single-story office complex, but provides a creative alternative for businesses needing both office and service space.

The building's design offers a full range of flexibility in space planning to accommodate complete office or a mix of office, service, showroom, and warehouse. Individual loading facilities and ample parking are additional features of 3265 Meridian Parkway.

- Generous window-lines create exceptional office space
- Site landscaping creates an impressive corporate image
- Comprehensive tenant sign program provides strong corporate identity
- Offices to suit
- 14'0" clear height
- Drive-in door service
- Individually metered and controlled air conditioning
- Ample parking



For further information, contact:

Timothy J. Talbot
ComReal Ft. Lauderdale

ComReal

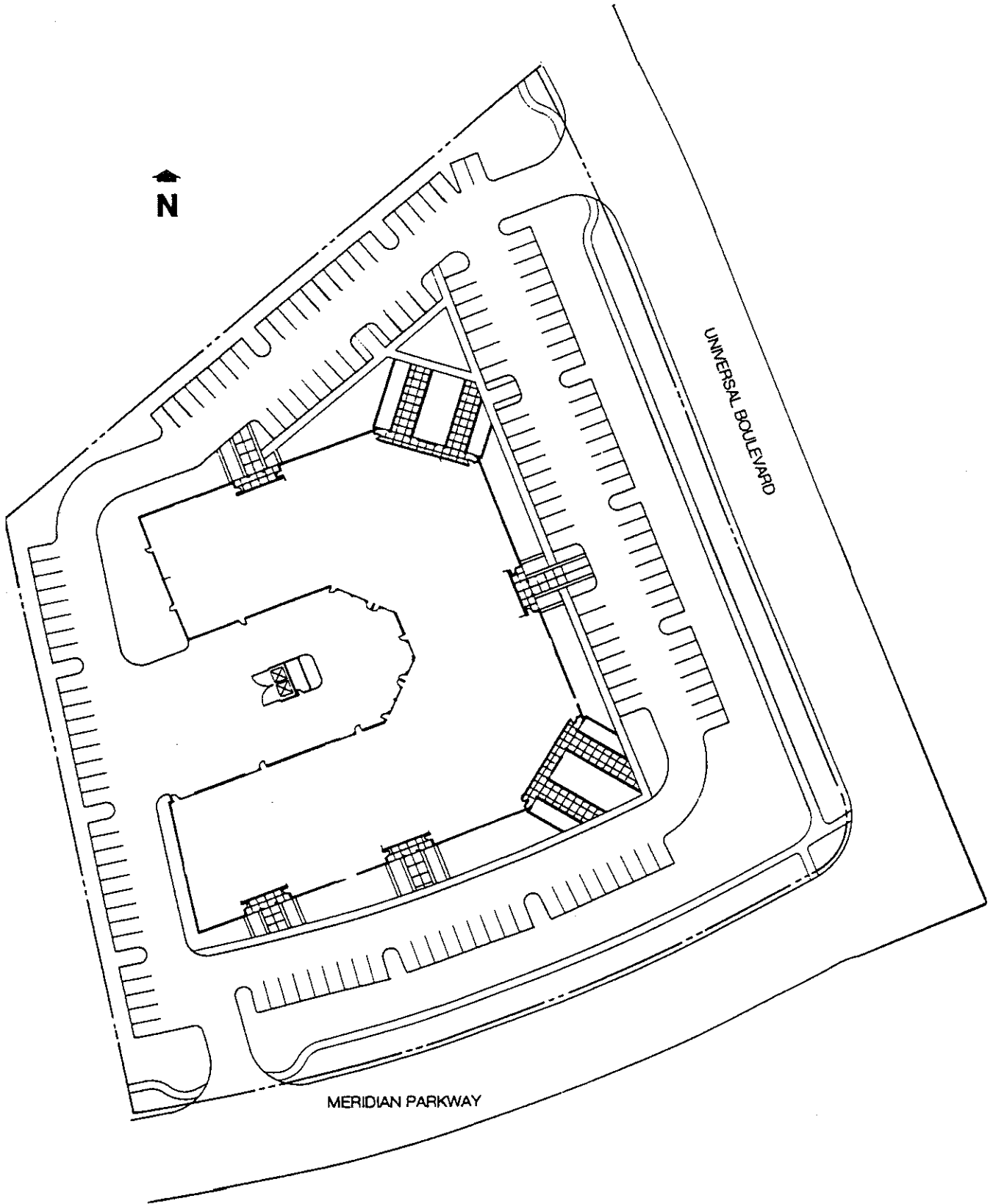
FT. LAUDERDALE

954/385-0000
3050 Universal Boulevard,
Suite 100
Weston, Florida 33331

MERIDIAN
BUSINESS CAMPUS AT WESTON

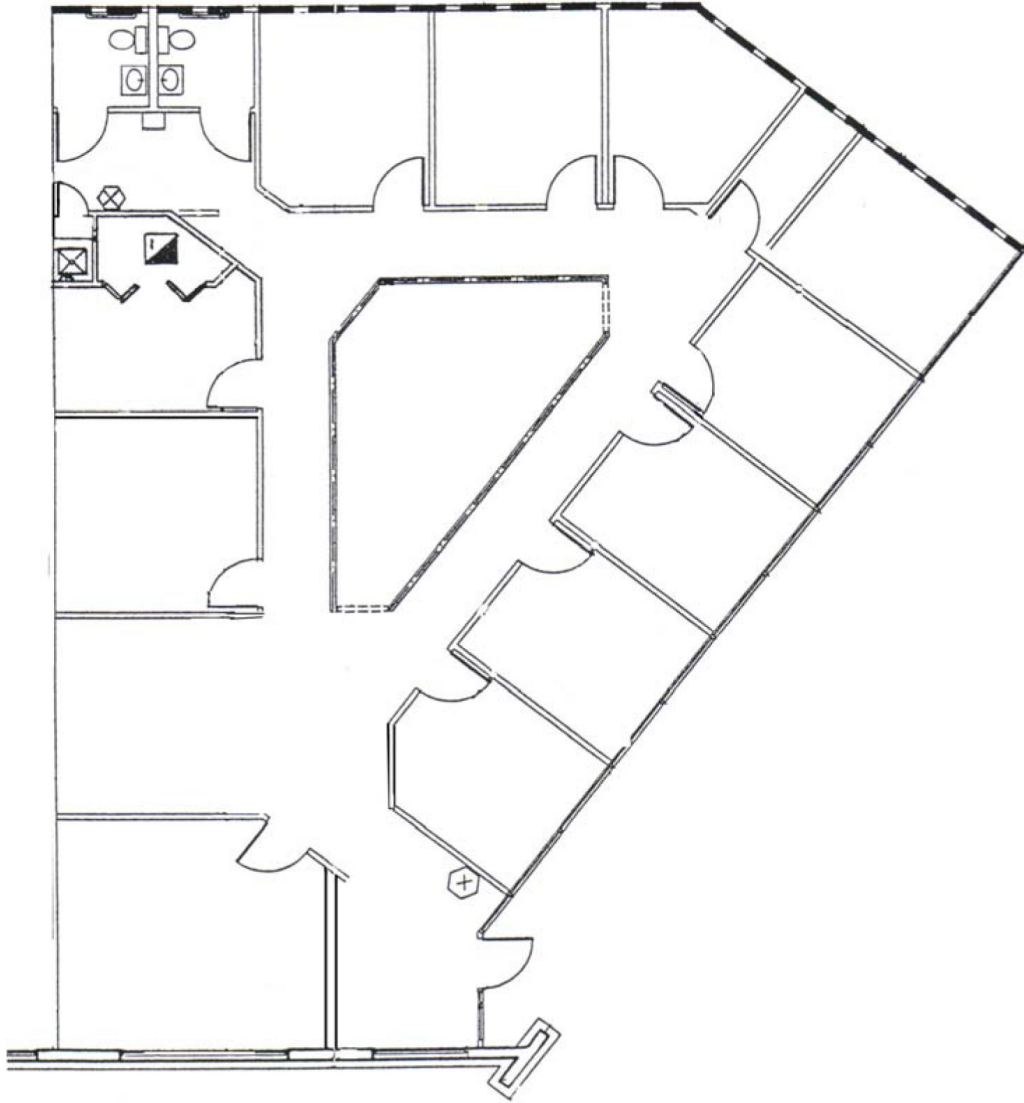
Site Plan

3265 Meridian Parkway



Meridian Business Campus

3265 Meridian Parkway, Weston, FL 33331



Suite 124 - 2,701 SF

FOR LEASING INFORMATION:

Timothy J. Talbot | ttalbot@comreal.com

954.385.0000

