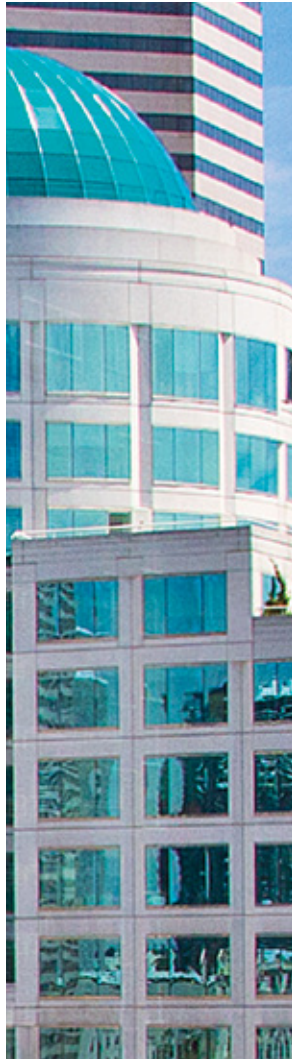
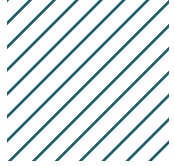




# SECOND & SENECA



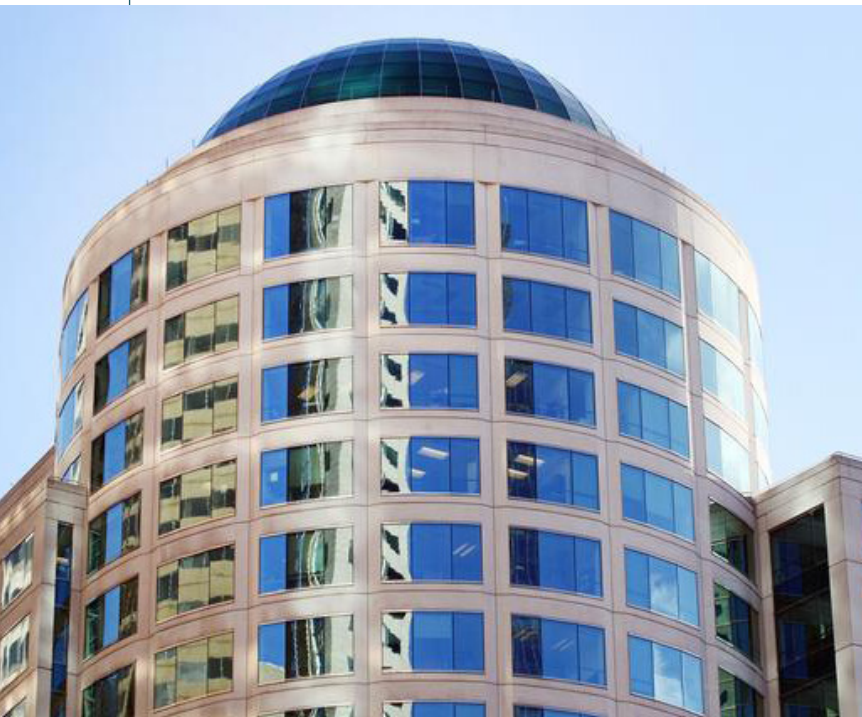
U R B A N & R E F I N E D



# I N N O V A T I V E

## HOME TO THOSE WHO VALUE IDENTITY

With its iconic design, refined contemporary style, and prime Seattle location near the redeveloping waterfront, Second & Seneca stands among the city's best-in-class.



IN THE HEART OF THE CBD  
22 STORIES | 522,667 SF  
CLASS A OFFICE SPACE

## OPPORTUNITY

Parking ratio: 1/1,100 RSF

---

LEED gold certified

---

Fitness center and conference room

---

On-site retail



I N S P I R E D

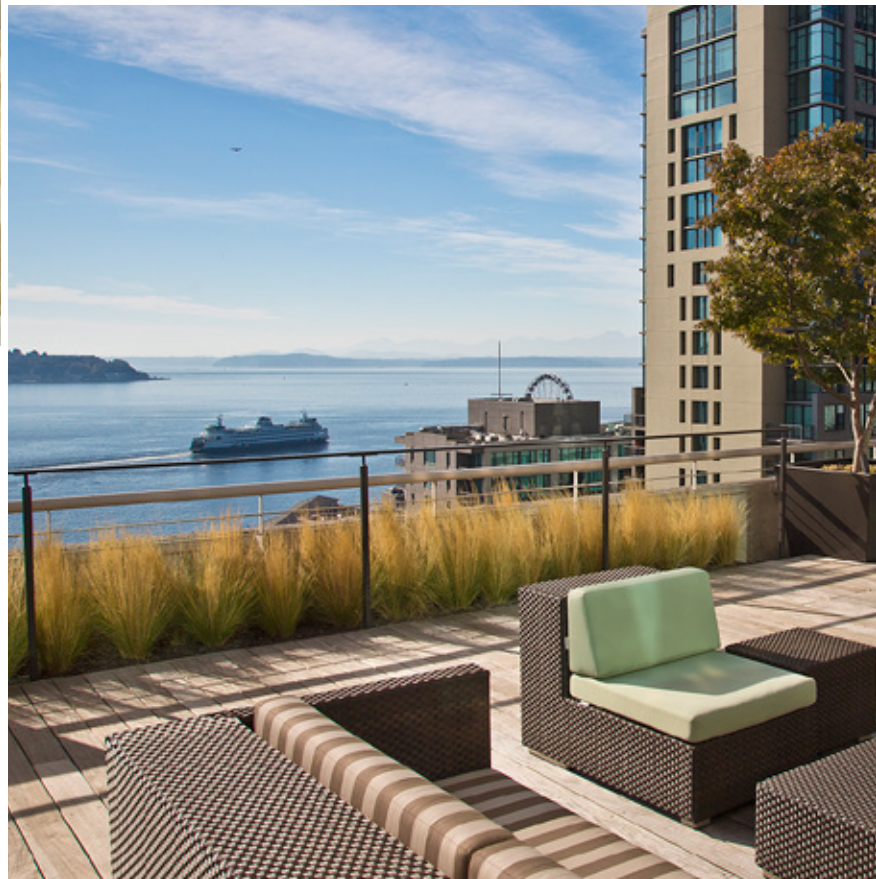


L I G H T  
E N E R G Y  
A C T I O N

An energetic lobby-turned-bustling-gallery space connects on-site dining and cafe seating and livens every workday. Connect, collaborate, and get inspired by a rotating program of digital installations — stories of city life told by 22 Pacific Northwestern artists.

A P O S I T I V E  
O U T L O O K

Partial and full floor spaces, private decks, and gorgeous bay views provide a wide range of opportunity for tenants.



PIKE PLACE MARKET

SEATTLE ART MUSEUM

UNIVERSITY ST STATION

EASY ACCESS

99

WALK SCORE

100

TRANSIT SCORE

UNIVERSITY ST

SENECA ST

SECOND & SENECA

2ND AVE

99

WESTERN AVE

1ST AVE

ELLIOTT BAY TRAIL  
ALASKAN WAY

SENECA ST

POST AVE

SPRING ST



SECONDANDSENECA.COM

CONTACT

Joe Gowan  
+1 206 607 1738  
joe.gowan@am.jll.com

Jim Allison  
+1 206 607 1787  
jim.allison@am.jll.com



© 2020 Jones Lang LaSalle IP, Inc. All rights reserved.  
All information contained herein is from sources deemed reliable;  
however, no representation or warranty is made to the accuracy thereof.

