



FOR LEASE

**972 Emerson Parkway**  
Greenwood, IN 46142



**972 Emerson Parkway**  
**Greenwood, IN 46142**

- Class A office space
- 10,100 SF (can be divided)
- Two minutes from I-65 & County Line Road
- Versatile combination of open and private workspace
- High-end finishes throughout
- Well located amidst retail, dining, medical & entertainment amenities
- Abundant parking available
- Prominent exterior building signage available



For more information, contact:

**Russell A. Van Til**

Vice President

+1 317 639 0546

[russell.vantil@cushwake.com](mailto:russell.vantil@cushwake.com)

One American Square, Suite 1800

Indianapolis, IN 46282

Main: +1 317 639 0515

[cushmanwakefield.com](http://cushmanwakefield.com)

©2018 Cushman & Wakefield. All rights reserved. The information contained in this communication is strictly confidential. This information has been obtained from sources believed to be reliable but has not been verified. NO WARRANTY OR REPRESENTATION, EXPRESS OR IMPLIED, IS MADE AS TO THE CONDITION OF THE PROPERTY (OR PROPERTIES) REFERENCED HEREIN OR AS TO THE ACCURACY OR COMPLETENESS OF THE INFORMATION CONTAINED HEREIN, AND SAME IS SUBMITTED SUBJECT TO ERRORS, OMISSIONS, CHANGE OF PRICE, RENTAL OR OTHER CONDITIONS, WITHDRAWAL WITHOUT NOTICE, AND TO ANY SPECIAL LISTING CONDITIONS IMPOSED BY THE PROPERTY OWNER(S). ANY PROJECTIONS, OPINIONS OR ESTIMATES ARE SUBJECT TO UNCERTAINTY AND DO NOT SIGNIFY CURRENT OR FUTURE PROPERTY PERFORMANCE.

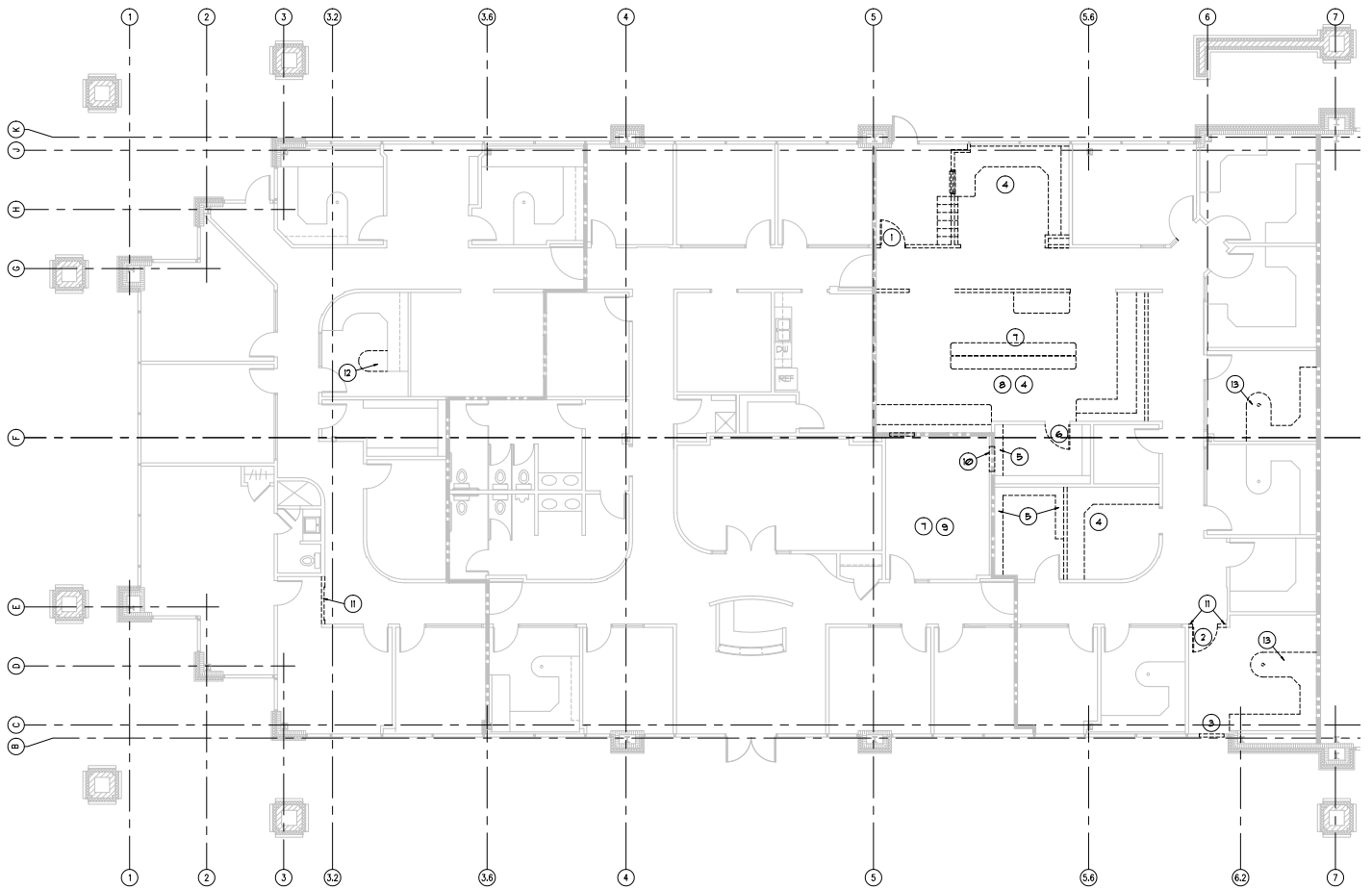


**CUSHMAN &  
WAKEFIELD**

FOR LEASE

**972 Emerson Parkway**  
Greenwood, IN 46142

**AVAILABLE  
10,100 SF  
(Can be divided)**



For more information, contact:

**Russell A. Van Til**

+1 317 639 0546

[russell.vantil@cushwake.com](mailto:russell.vantil@cushwake.com)

One American Square, Suite 1800

Indianapolis, IN 46282

Main: +1 317 639 0515

[cushmanwakefield.com](http://cushmanwakefield.com)