

# For Lease: McDowell Road Plaza

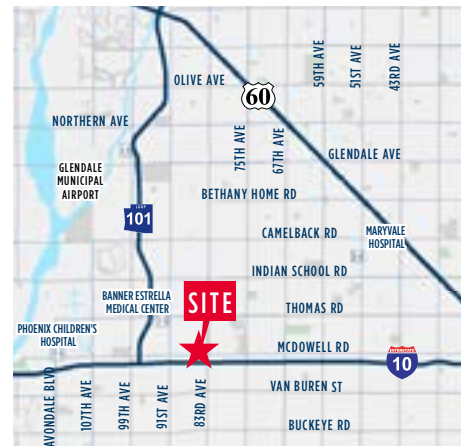
8450 W. McDowell Road | W/NWC 83rd Ave & McDowell Road | Phoenix



## Property Highlights:

- Property fronts on McDowell Road - 21,386 cars per day
- Zoned C-2, City of Phoenix

## Trade Area Tenants Include:



For more information, contact:

**Chris Campbell**

Director

+1 602 224 4412

[chris.campbell@cushwake.com](mailto:chris.campbell@cushwake.com)

2555 E. Camelback Rd, Suite 400

Phoenix, Arizona 85016

ph: +1 602 954 9000

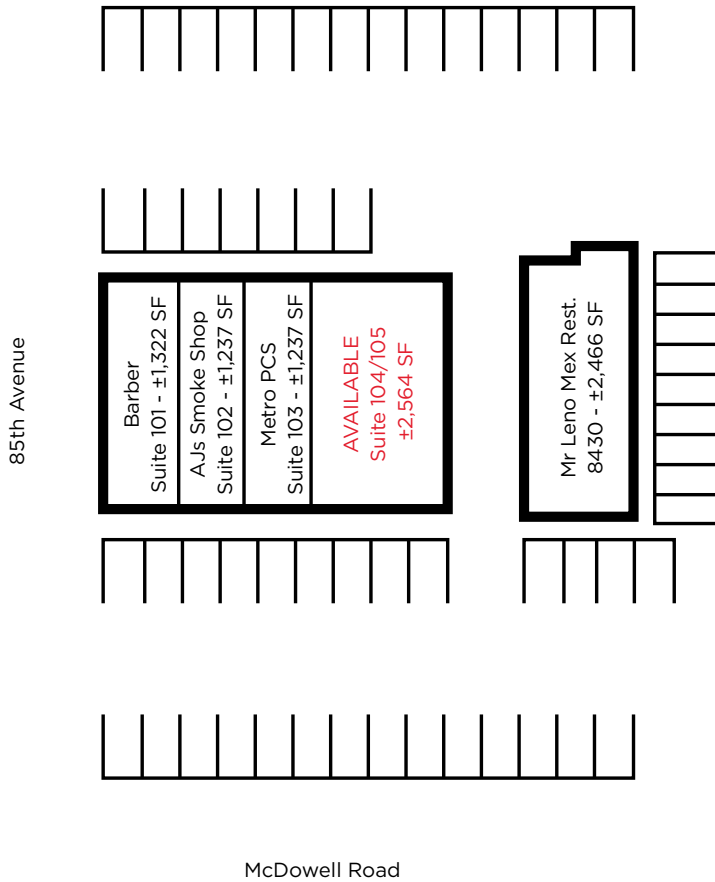
fx: +1 602 253 0528

[cushmanwakefield.com](http://cushmanwakefield.com)



# For Lease: McDowell Road Plaza

8450 W. McDowell Road | W/NWC 83rd Ave & McDowell Road | Phoenix

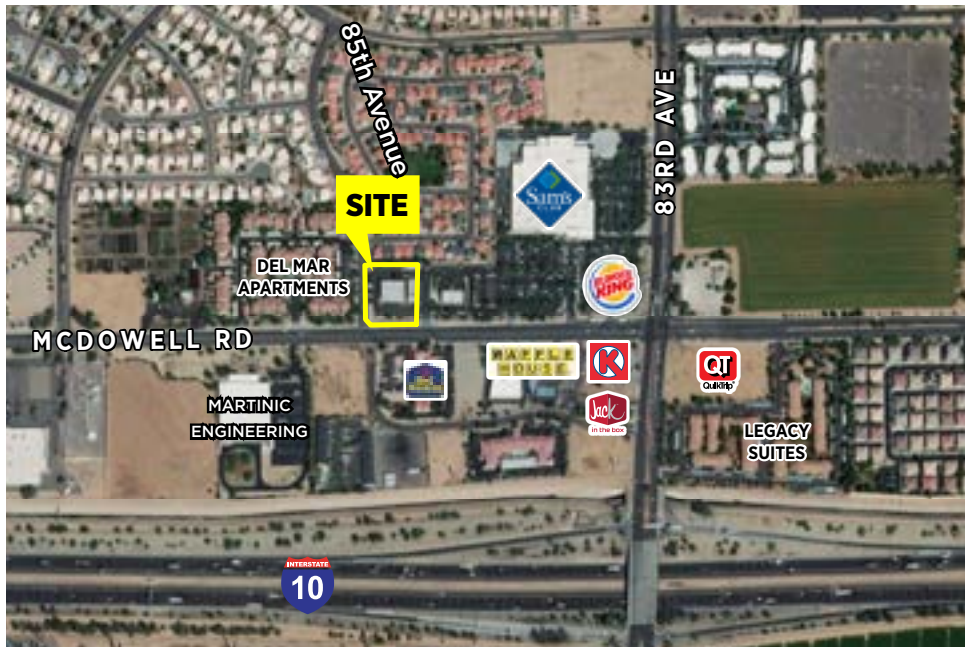


## Demographics:

	1 Mile	2 Miles	3 Miles
Population:	14,506	59,488	137,170
Average HH Income:	\$47,590	\$47,167	\$48,540

## Traffic Counts:

North:	43,512	South:	36,192
East:	21,386	West:	18,138



For more information, contact:

### Chris Campbell

Director  
+1 602 224 4412  
chris.campbell@cushwake.com

2555 E. Camelback Rd, Suite 400  
Phoenix, Arizona 85016  
ph: +1 602 954 9000  
fx: +1 602 253 0528

[cushmanwakefield.com](http://cushmanwakefield.com)

Cushman & Wakefield Copyright 2018. The information contained herein was lawfully obtained from sources we consider reliable. Cushman & Wakefield is not responsible and expressly disclaims all liability, for errors, omissions, prior sales, withdrawal from the market or change in price. Seller (or Lessor, as the case may be) and broker make no representation as to the environmental condition of the property and recommend Purchaser's (or Lessee's) independent investigation.