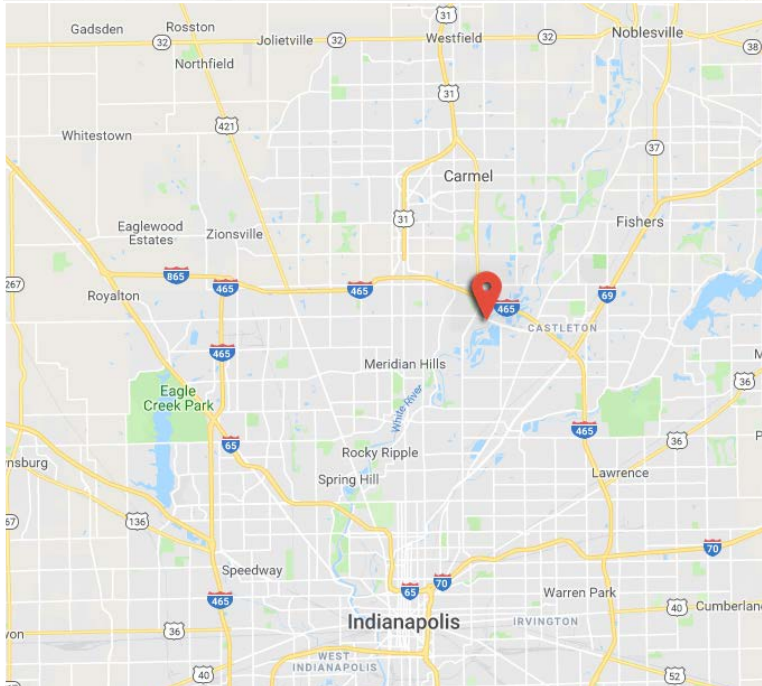




Keystone at the Crossing Office Space

3801 E 82nd Street Indianapolis, IN 46240



Details:

- For Lease: \$18.50 Per/SF Full Service Net Janitorial
- 6,661 SF Available
- Move-in ready or divisible to as little as 1,710 SF
- Twenty three offices, a conference room, a training room, his and hers restrooms, and a large porch overlooking Clearwater Lake.
- Ample parking.
- Easy access to Keystone Avenue and I-465.

Keith Dedrick SIOR, CCIM

Cell: 317-502-3622

E-mail: keith@ccgbrokers.com

Emma Scheibert

Cell: 317-750-8226

E-mail: emma@ccgbrokers.com

David Trulock

Cell: 317-727-4799

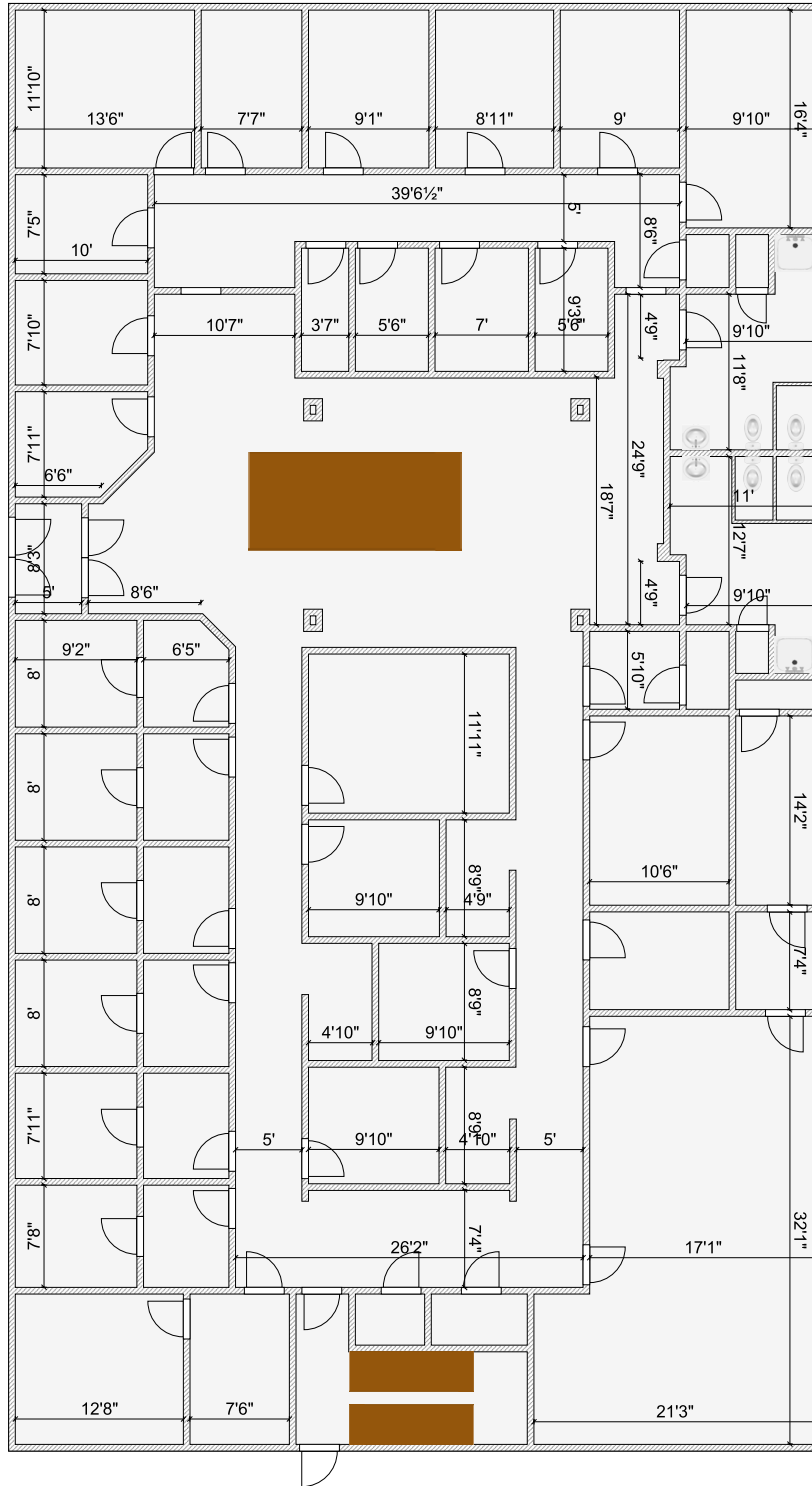
E-mail: dtrulock@bhhsin.com





Keystone at the Crossing Office Space

3801 E 82nd Street Indianapolis, IN 46240



Keith Dedrick SIOR, CCIM

Cell: 317-502-3622

E-mail: keith@ccgbrokers.com

Emma Scheibert

Cell: 317-750-8226

E-mail: emma@ccgbrokers.com

David Trulock

Cell: 317-727-4799

E-mail: dtrulock@bhhsin.com





Keystone at the Crossing Office Space

3801 E 82nd Street Indianapolis, IN 46240



Keith Dedrick SIOR, CCIM
Cell: 317-502-3622
E-mail: keith@ccgbrokers.com

Emma Scheibert
Cell: 317-750-8226
E-mail: emma@ccgbrokers.com

David Trulock
Cell: 317-727-4799
E-mail: dtrulock@bhhsin.com





Keystone at the Crossing Office Space

3801 E 82nd Street Indianapolis, IN 46240



Keith Dedrick SIOR, CCIM
Cell: 317-502-3622
E-mail: keith@cgbrokers.com

Emma Scheibert
Cell: 317-750-8226
E-mail: emma@cgbrokers.com

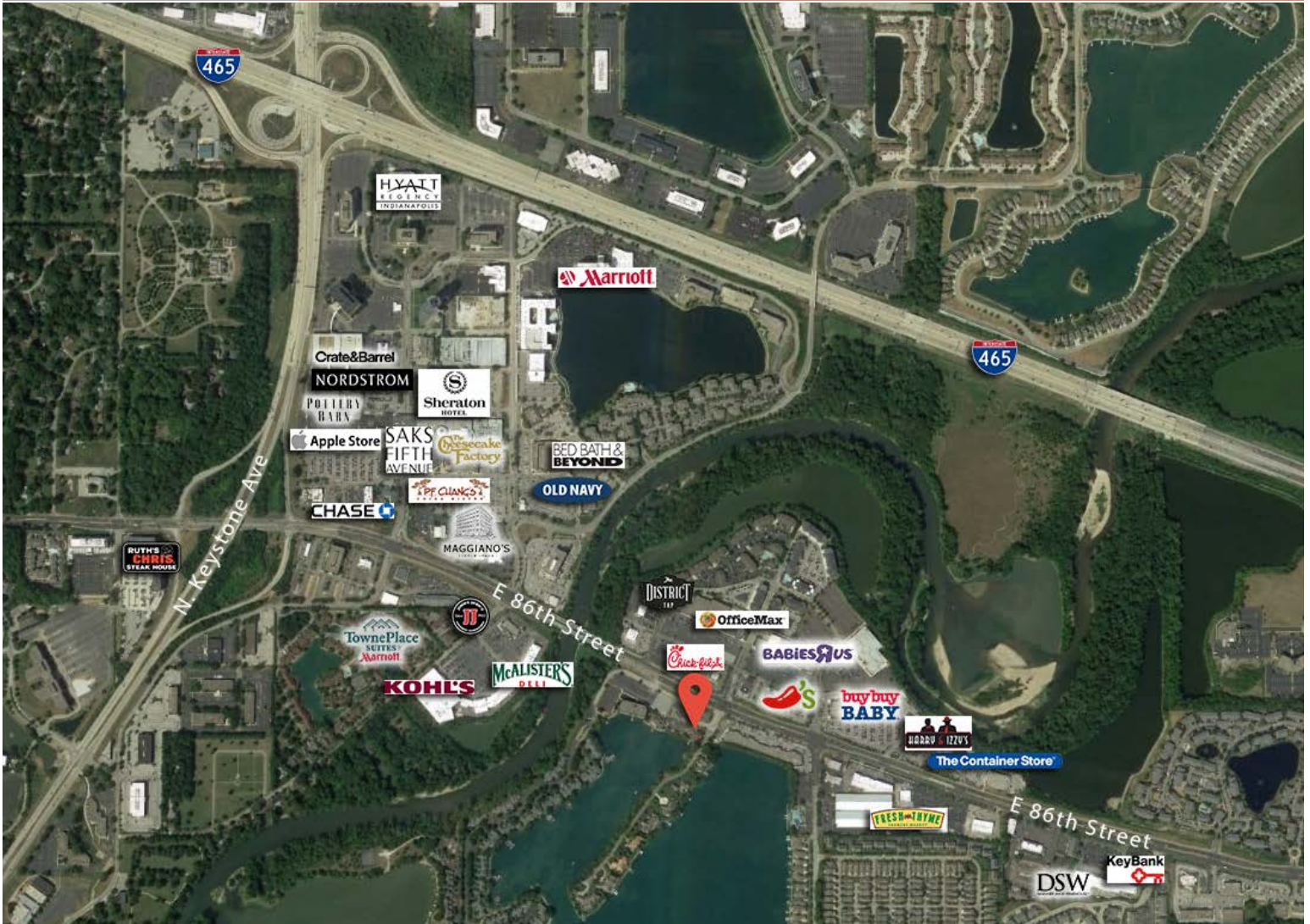
David Trulock
Cell: 317-727-4799
E-mail: dtrulock@bhhsin.com





Keystone at the Crossing Office Space

3801 E 82nd Street Indianapolis, IN 46240



	Population	Ave. HH Income	Med. Home Value	Households	Ave. HH Size
1 Mile	5,537	\$88,303	\$276,601	2,527	2.19
3 Miles	55,931	\$85,260	\$241,301	25,828	2.14
5 Miles	169,310	\$91,030	\$243,697	75,107	2.23

Keith Dedrick SIOR, CCIM
 Cell: 317-502-3622
 E-mail: keith@ccgbrokers.com

Emma Scheibert
 Cell: 317-750-8226
 E-mail: emma@ccgbrokers.com

David Trulock
 Cell: 317-727-4799
 E-mail: dtrulock@bhhsin.com

