

- Deed restricted site in Bayport Industrial Park
- All city utilities available from the City of LaPorte
- Zoned heavy industrial
- No storm water or detention required, not in the 100-year floodplain
- New Decade Drive is a 41' concrete curbed & guttered street
- Fully cleared and ready to construct
- Direct access to Beltway 8 (west) Hwy. 225 (north) and Hwy. 146 (east)
- Key Map 579E
- Build-to-Suit

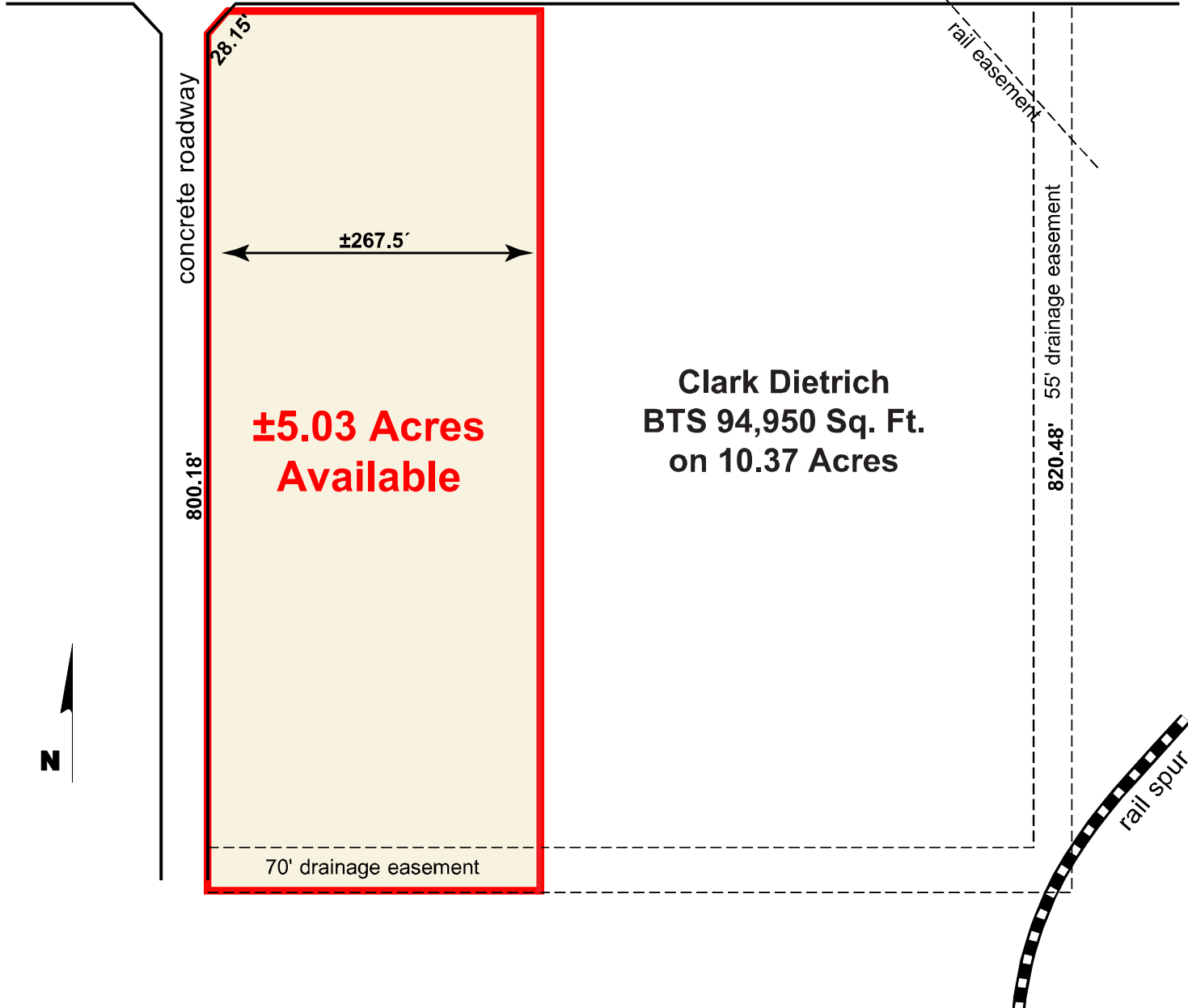
For more information, contact:

B. Kelley Parker III, SIOR
 (713) 963 2896
Kelley.Parker@cushwake.com

John F. Littman, SIOR
 (713) 963 2862
John.Littman@cushwake.com

Coe Parker, SIOR
 (713) 963 2825
Coe.Parker@cushwake.com

New Decade Drive



For more information, contact:

B. Kelley Parker III, SIOR
(713) 963 2896
Kelley.Parker@cushwake.com

John F. Littman, SIOR
(713) 963 2862
John.Littman@cushwake.com

Coe Parker, SIOR
(713) 963 2825
Coe.Parker@cushwake.com