

# KOHL'S ANCHORED PAD SITE

Lady Lake, FL 32159 | 392 N Hwy 27/441 | Rolling Acres Rd & US Hwy 441 | #1229



- +/- 0.86 acres available
- Located on the SWQ of US Hwy 441 and Fennell Blvd
- Dominant power center in an extremely high growth market

DEMOGRAPHICS	1 MILE	3 MILES	5 MILES	TRAFFIC COUNTS
2018 TOTAL POPULATION	5,571	30,901	77,521	US Hwy 441
2018 DAYTIME POPULATION	8,580	37,496	80,262	28,500 VPD
2018 AVERAGE HH INCOME	56,546	59,983	70,064	
2018 MEDIAN HH INCOME	41,512	44,977	51,984	

AVAILABLE SF:  
 +/- 0.86 ACRES  
 GROUND LEASE:  
 CALL FOR INFO  
 ZONING:  
 COMMERCIAL  
 USE RESTRICTION:  
 CALL FOR DETAILS

## AREA ANCHORS



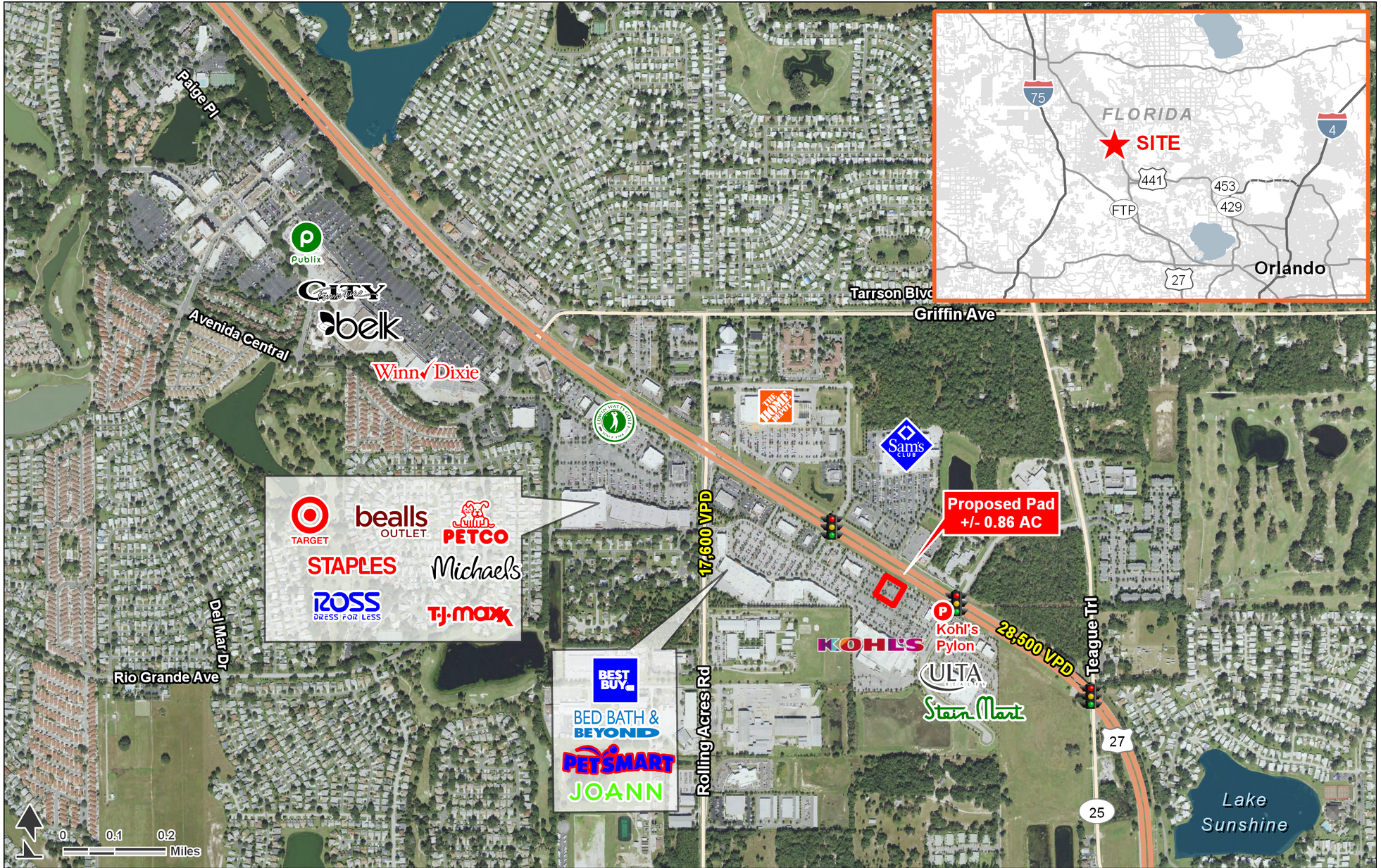
FOR MORE INFORMATION, CONTACT EXCLUSIVE AGENT(S):  
 GAVIN WALSH • gavin.walsh@tscg.com • 407.788.0543





# KOHL'S ANCHORED PAD SITE

Lady Lake, FL 32159 | 392 N Hwy 27/441 | Rolling Acres Rd & US Hwy 441 | #1229



FOR MORE INFORMATION, CONTACT EXCLUSIVE AGENT(S):  
 GAVIN WALSH • [gavin.walsh@tscg.com](mailto:gavin.walsh@tscg.com) • 407.788.0543



Demographics: Esri 2018 No warranty expressed or implied has been made as to the accuracy of the information provided herein, no liability assumed for error or omissions.



# KOHL'S ANCHORED PAD SITE

Lady Lake, FL 32159 | 392 N Hwy 27/441 | Rolling Acres Rd & US Hwy 441 | #1229



FOR MORE INFORMATION, CONTACT EXCLUSIVE AGENT(S):  
GAVIN WALSH • [gavin.walsh@tscg.com](mailto:gavin.walsh@tscg.com) • 407.788.0543

 **Stan Johnson Co.**  
THE NET LEASE AUTHORITY™

**CHAINLINKS**  
RETAIL ADVISORS

Demographics: Esri 2018 No warranty expressed or implied has been made as to the accuracy of the information provided herein, no liability assumed for error or omissions.