



2800 Plant Atkinson Rd, SE Smyrna, Georgia 30080



BUILDING HIGHLIGHTS

- 42,718 SF Total Building
- 19,296 SF Office (2-story high end mezzanine office finish)
- 23,422 SF Warehouse
- 24' Clear Height in Warehouse
- 2 Conference Rooms / 1 Training Room / 1 Break Room
- 5 18-Wheeler Height Dock High / Rollup Doors
- 1 Pick-Up/Van Height Dock/Rollup Door
- 1 Drive-In/Rollup Door
- Outside Storage
- 80 Parking Spaces
- Built in 2000
- Situated on ±3.5 acres

Darren Butler

404 812 4021
dbutler@naibg.com

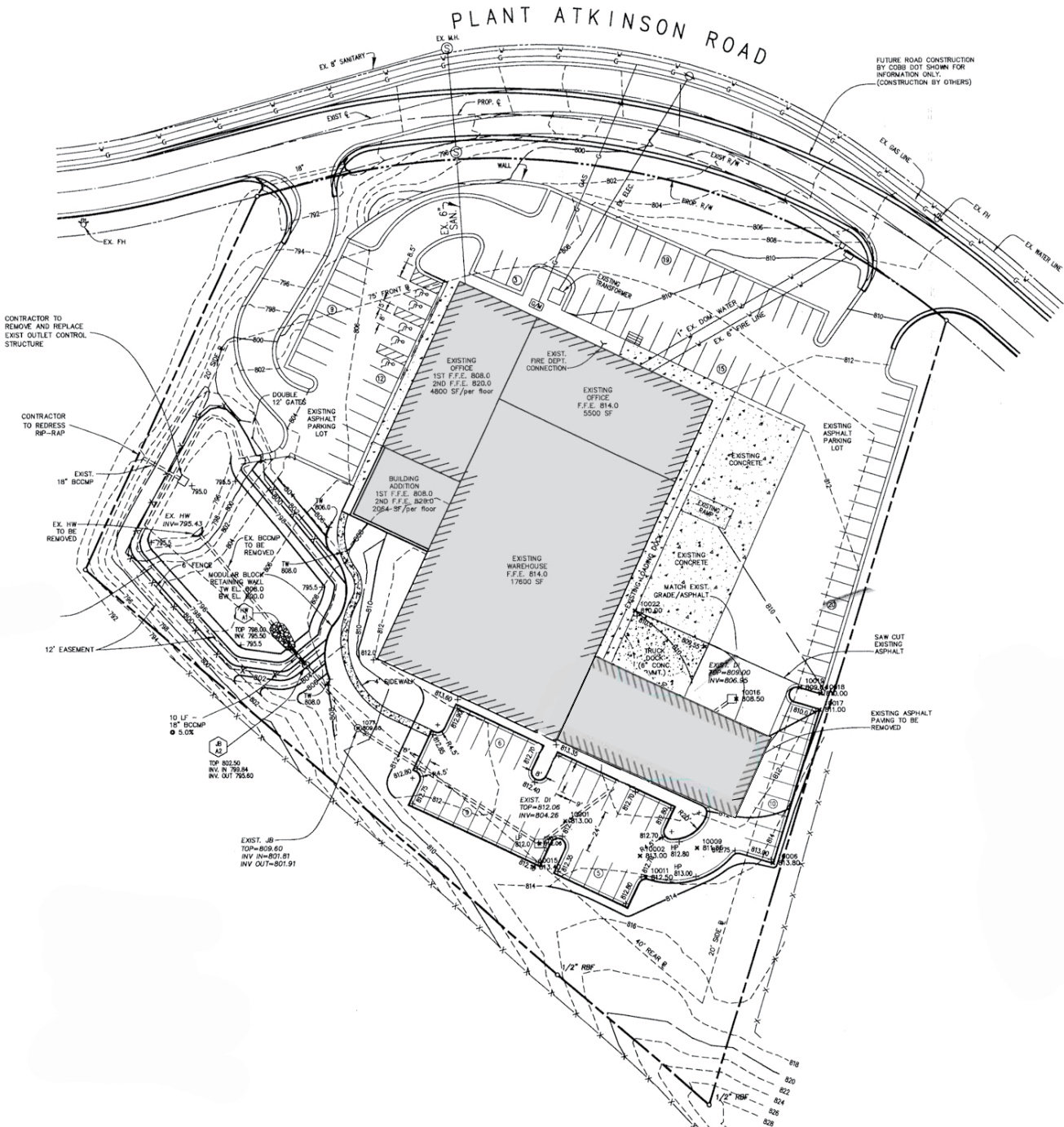
Nathan Anderson

404 812 4020
nanderson@naibg.com

Information is deemed from reliable sources. No warranty is made as to its accuracy.

naibg.com

SITE PLAN



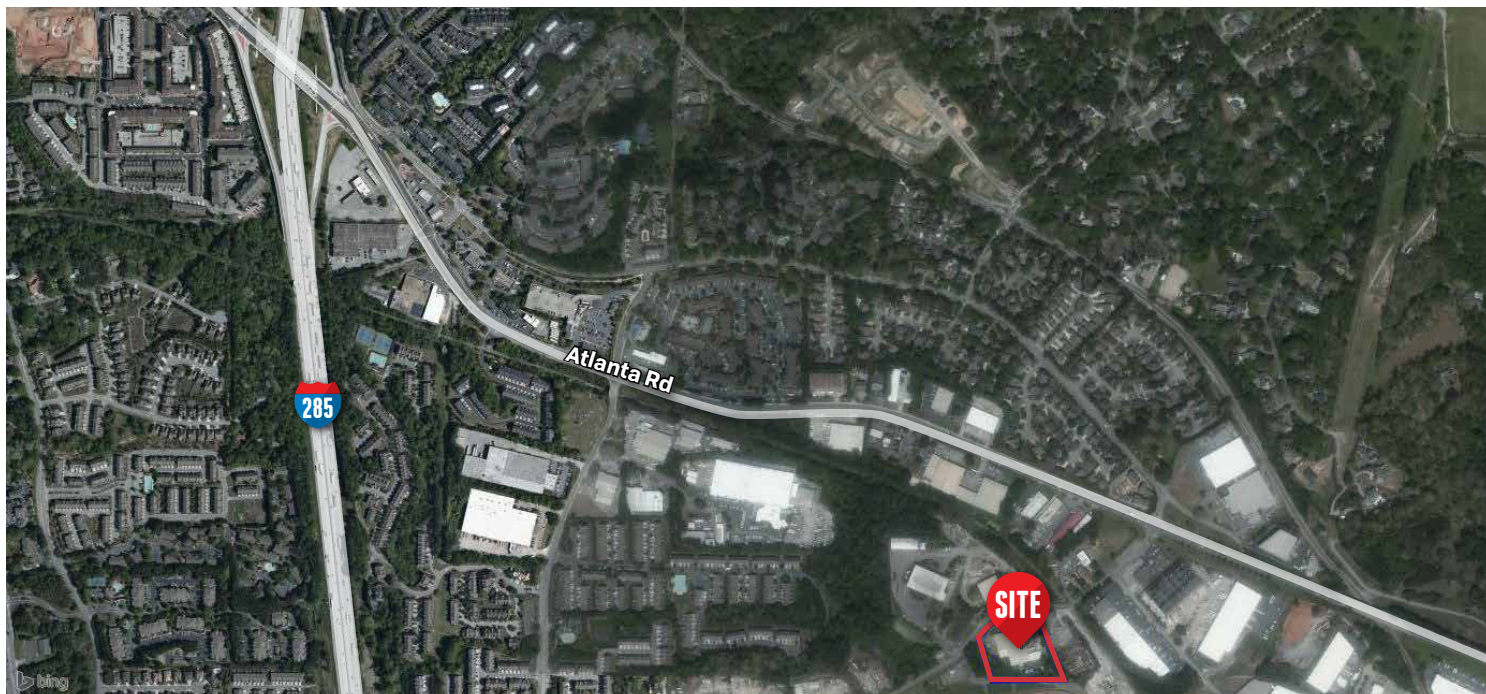
Darren Butler
404 812 4021
dbutler@naibg.com

Nathan Anderson
404 812 4020
nanderson@naibg.com

Information is deemed from reliable sources. No warranty is made as to its accuracy.

naibg.com

AERIAL VIEW



Darren Butler
404 812 4021
dbutler@naibg.com

Nathan Anderson
404 812 4020
nanderson@naibg.com

Information is deemed from reliable sources. No warranty is made as to its accuracy.

naibg.com