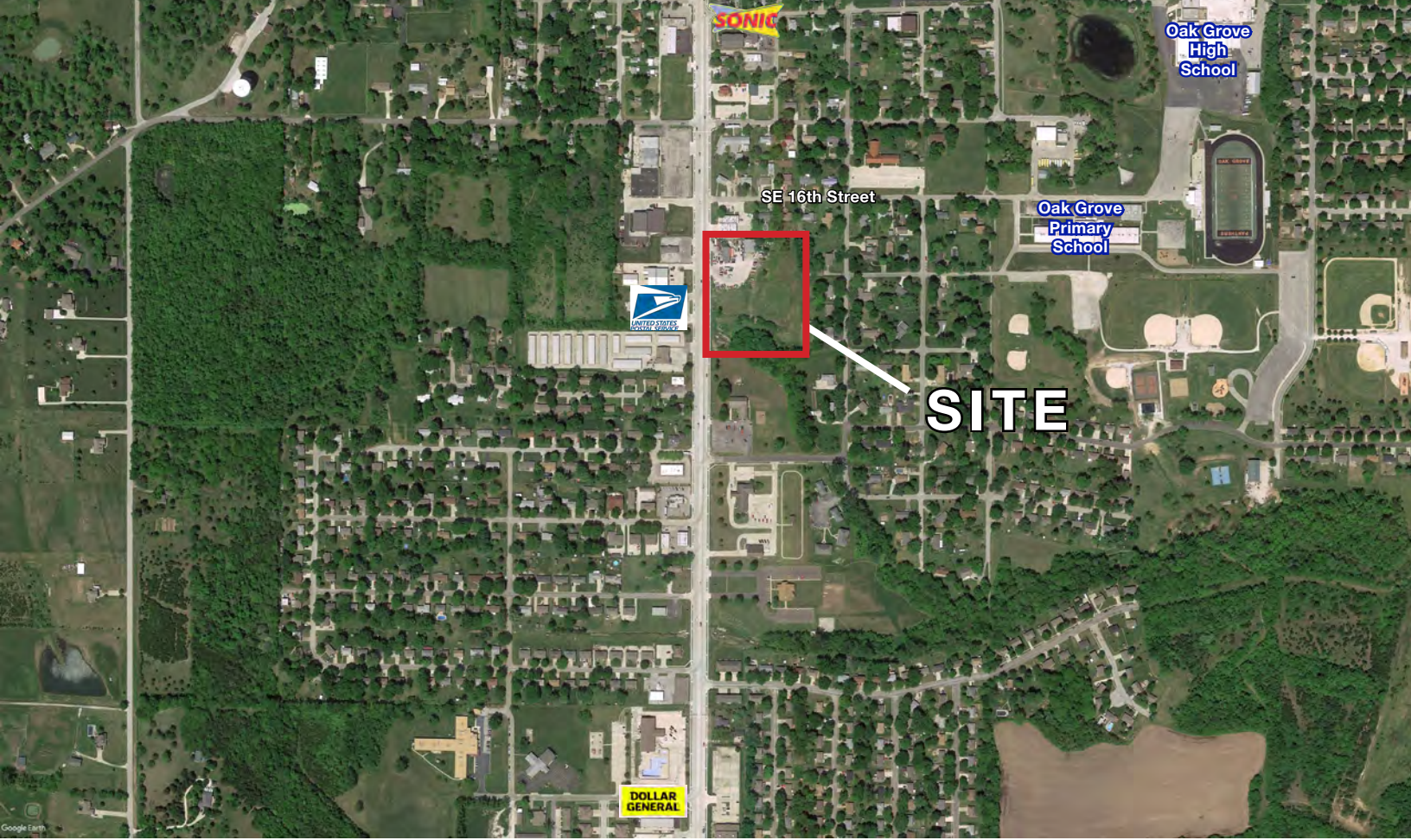


LAND FOR SALE

1603 S. Broadway, Oak Grove, Missouri



SALE PRICE: \$895,000 | 5.62 ACRES

DEMOGRAPHICS

	1 mile	3 miles	5 miles
Estimated Population	5,735	10,481	25,460
Avg. Household Income	\$69,082	\$72,056	\$76,616

- Outstanding location
- Great visibility
- Located in the center of Oak Grove
- Close to Sonic, Casey's, Dollar General, and O'Reilly
- Property may be subdivided



CLICK HERE TO VIEW MORE LISTING INFORMATION

For More Information Contact:

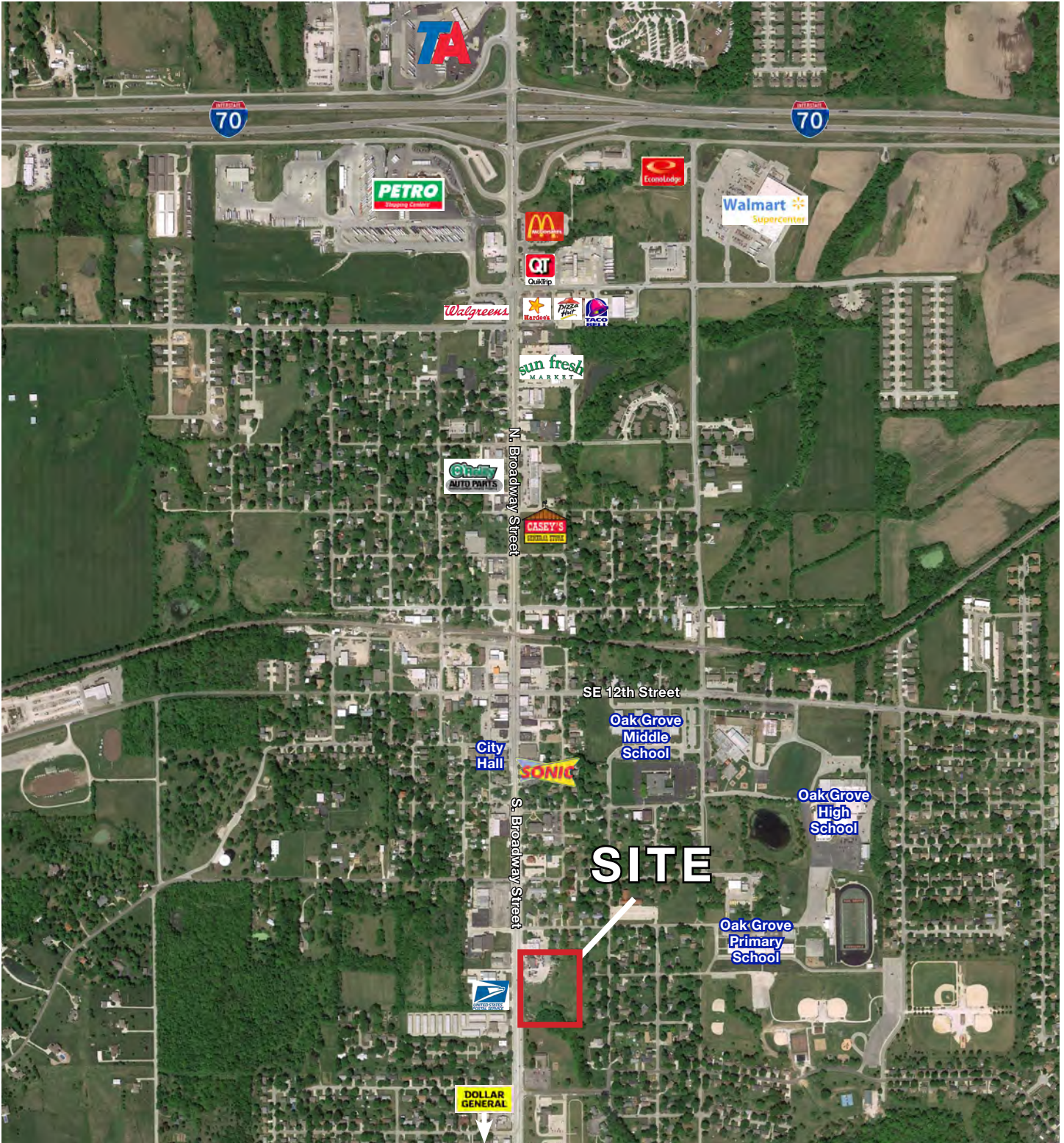
WILLIAM GLASGOW | 816.412.7394 | wglasgow@blockandco.com

Exclusive Agent

LAND FOR SALE

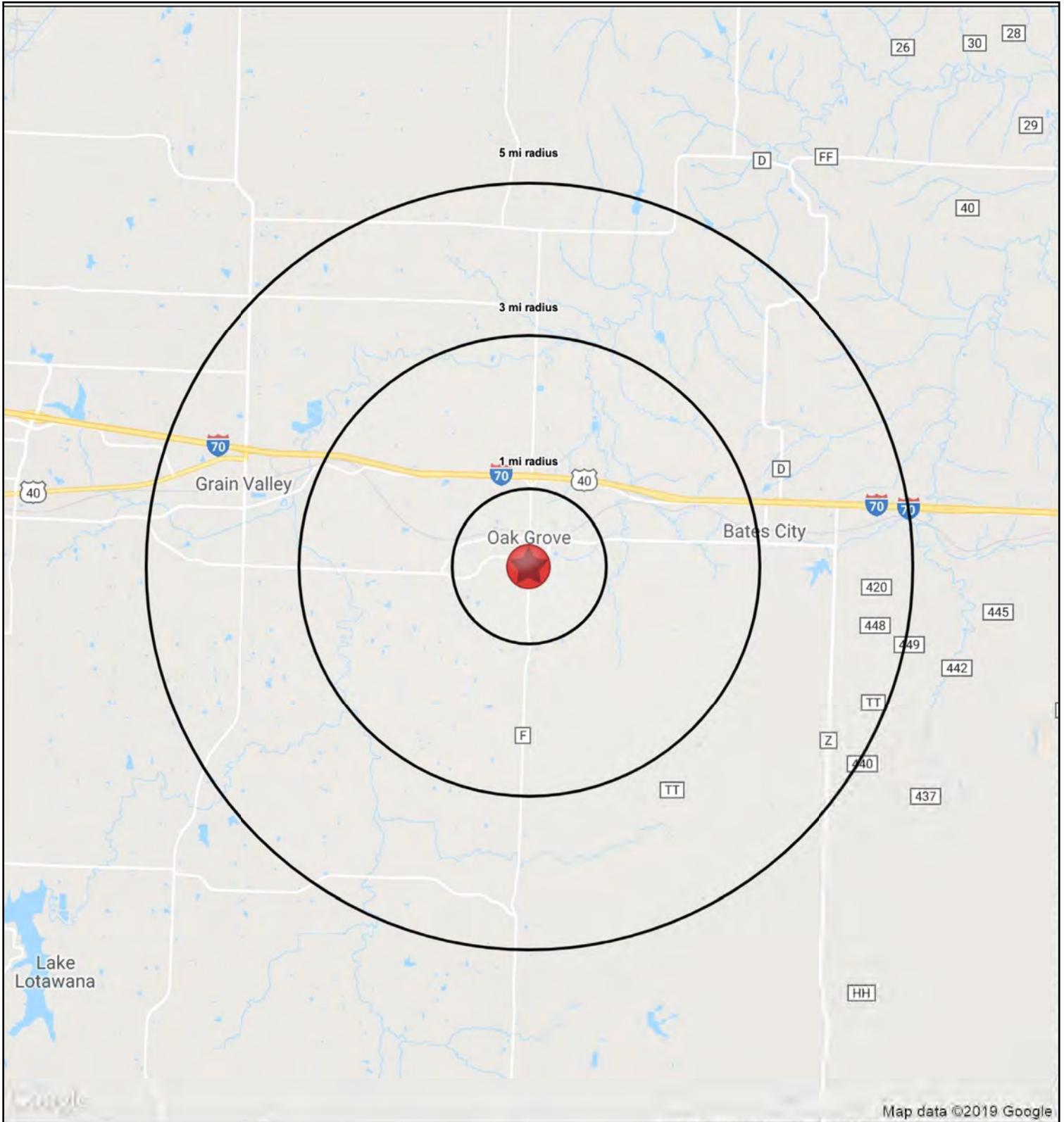
1603 S. Broadway, Oak Grove, Missouri

AERIAL



LAND FOR SALE

1603 S. Broadway, Oak Grove, Missouri





LAND FOR SALE

1603 S. Broadway, Oak Grove, Missouri

RS1

1603 S. Broadway		1 mi radius	3 mi radius	5 mi radius
Oak Grove, MO 64075				
POPULATION	2019 Estimated Population	5,735	10,481	25,460
	2024 Projected Population	5,816	10,657	25,901
	2010 Census Population	5,539	10,059	24,140
	2000 Census Population	4,541	7,749	15,944
	Projected Annual Growth 2019 to 2024	0.3%	0.3%	0.3%
	Historical Annual Growth 2000 to 2019	1.4%	1.9%	3.1%
	2019 Median Age	34.4	35.7	34.9
HOUSEHOLDS	2019 Estimated Households	2,128	3,989	9,714
	2024 Projected Households	2,136	4,019	9,793
	2010 Census Households	1,947	3,618	8,711
	2000 Census Households	1,609	2,745	5,740
	Projected Annual Growth 2019 to 2024	-	0.2%	0.2%
	Historical Annual Growth 2000 to 2019	1.7%	2.4%	3.6%
RACE AND ETHNICITY	2019 Estimated White	94.2%	93.9%	93.0%
	2019 Estimated Black or African American	1.3%	1.4%	2.0%
	2019 Estimated Asian or Pacific Islander	1.1%	1.0%	1.0%
	2019 Estimated American Indian or Native Alaskan	0.6%	0.7%	0.6%
	2019 Estimated Other Races	2.8%	3.1%	3.4%
	2019 Estimated Hispanic	4.1%	3.8%	4.2%
INCOME	2019 Estimated Average Household Income	\$69,082	\$72,056	\$76,616
	2019 Estimated Median Household Income	\$64,152	\$64,237	\$67,810
	2019 Estimated Per Capita Income	\$25,690	\$27,469	\$29,255
EDUCATION (AGE 25+)	2019 Estimated Elementary (Grade Level 0 to 8)	1.9%	2.0%	1.7%
	2019 Estimated Some High School (Grade Level 9 to 11)	5.3%	4.8%	5.8%
	2019 Estimated High School Graduate	35.5%	35.6%	35.5%
	2019 Estimated Some College	29.2%	28.5%	26.6%
	2019 Estimated Associates Degree Only	10.1%	9.2%	8.1%
	2019 Estimated Bachelors Degree Only	13.2%	13.8%	15.2%
	2019 Estimated Graduate Degree	4.9%	6.1%	7.0%
BUSINESS	2019 Estimated Total Businesses	153	298	632
	2019 Estimated Total Employees	1,626	3,135	6,031
	2019 Estimated Employee Population per Business	10.7	10.5	9.5
	2019 Estimated Residential Population per Business	37.6	35.2	40.3

