

FOR LEASE

STEAK 'N SHAKE BUILDING

107

S PENNSYLVANIA ST

Indianapolis, IN 46204



HISTORIC OFFICE BUILDING

BUILDING FEATURES

- + Prime Location at Maryland & Pennsylvania
- + Historic architectural features
 - Exposed brick
 - Exposed wood beams
 - Arched windows
- + Bike Room
- + Lockers
- + Covered parking in adjacent garage
- + Multiple dining and retail options within walking distance



www.cbre.us/steaknshake

CBRE

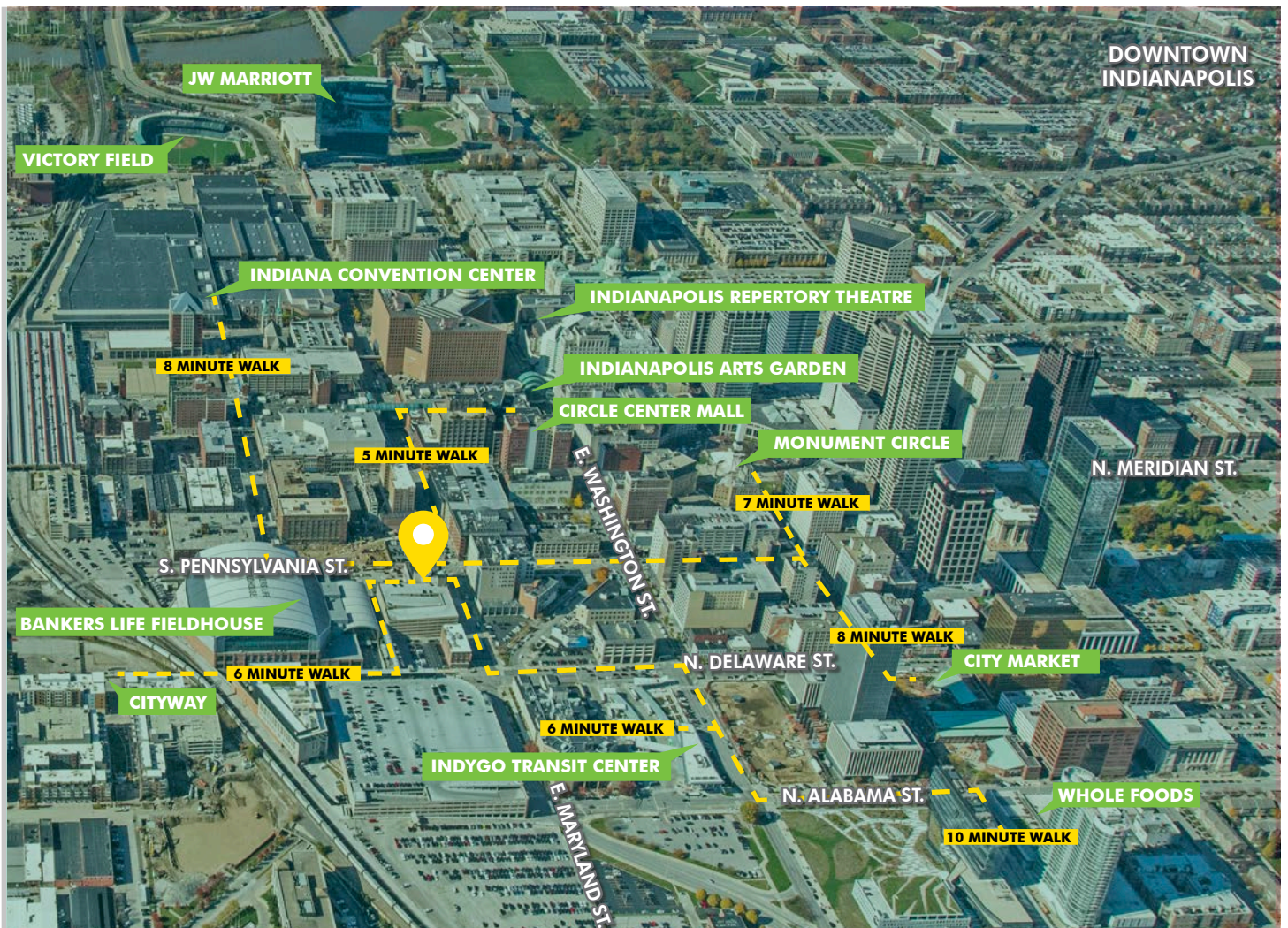
FOR LEASE STEAK 'N SHAKE BUILDING



SPACE FEATURES

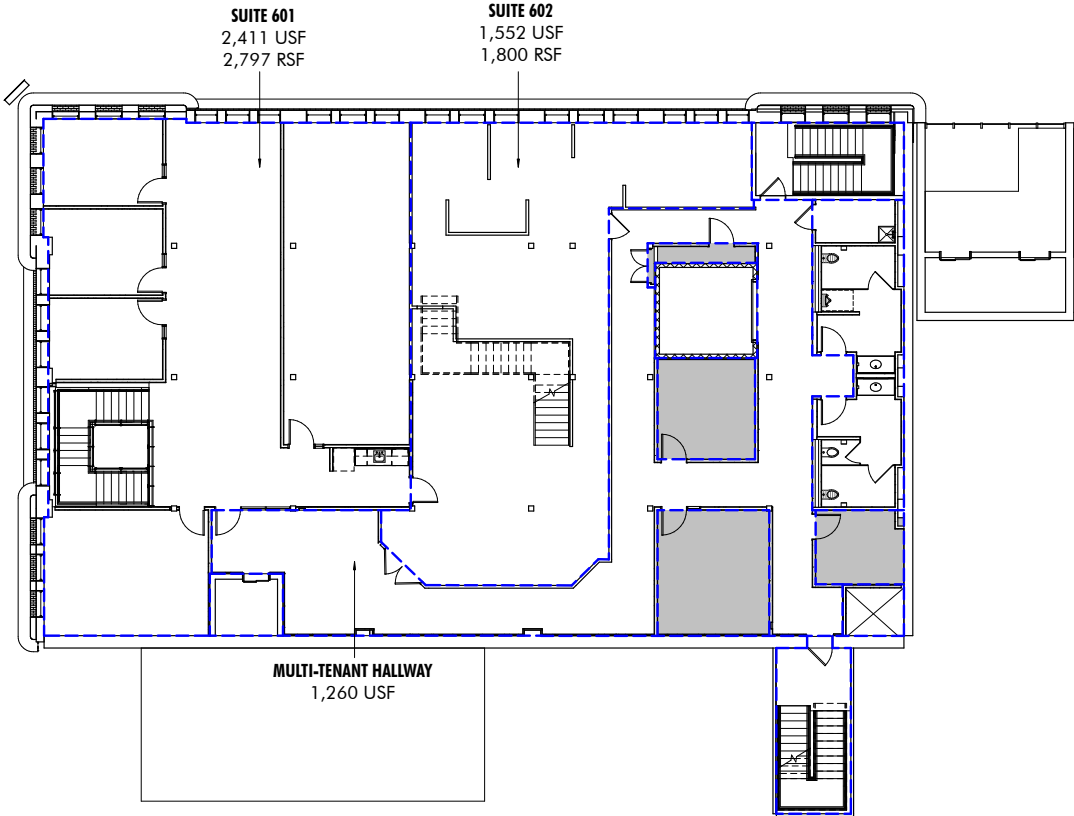
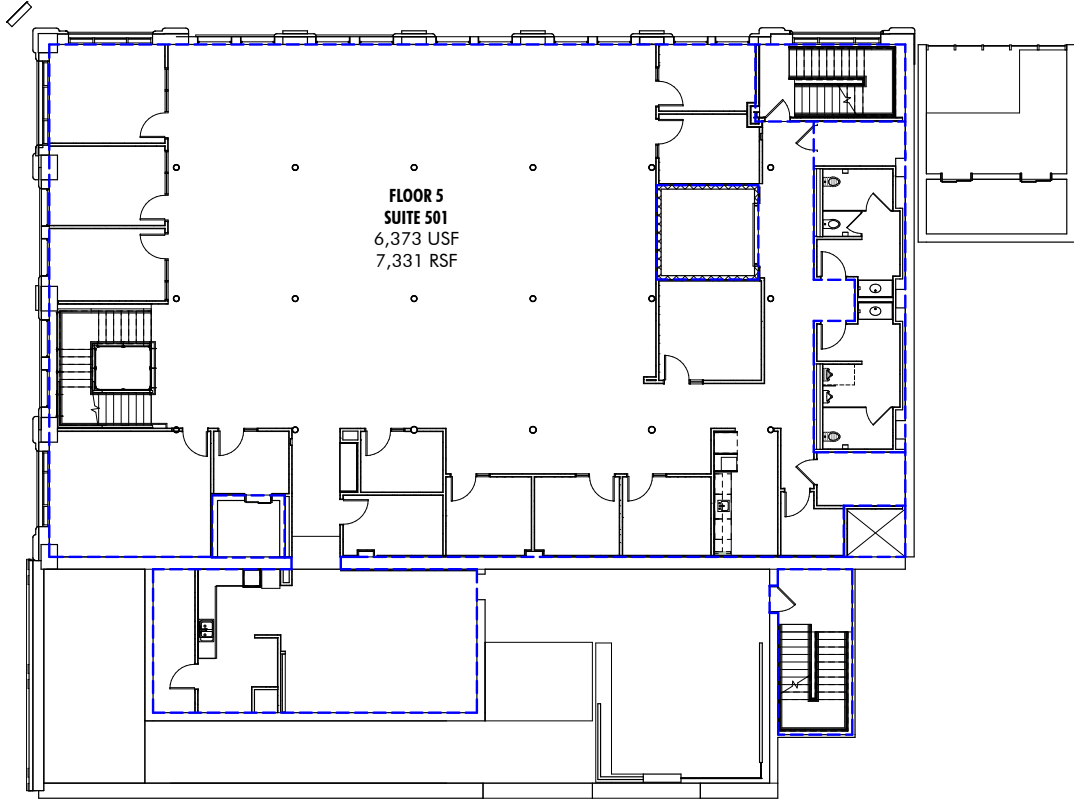
- + Two Outdoor decks with city views
- + 760 RSF Penthouse
- + Internal staircase allowing natural light to flow in
- + Open floor plan with perimeter offices
- + Conference rooms, break rooms and large executive offices in place

Options	Floors	SF
A	5th Floor Only	7,331
B	5th Floor plus 601	10,899
C	5th Floor plus 601 & 602	13,196
D	5th Floor plus 6th Floor	13,916



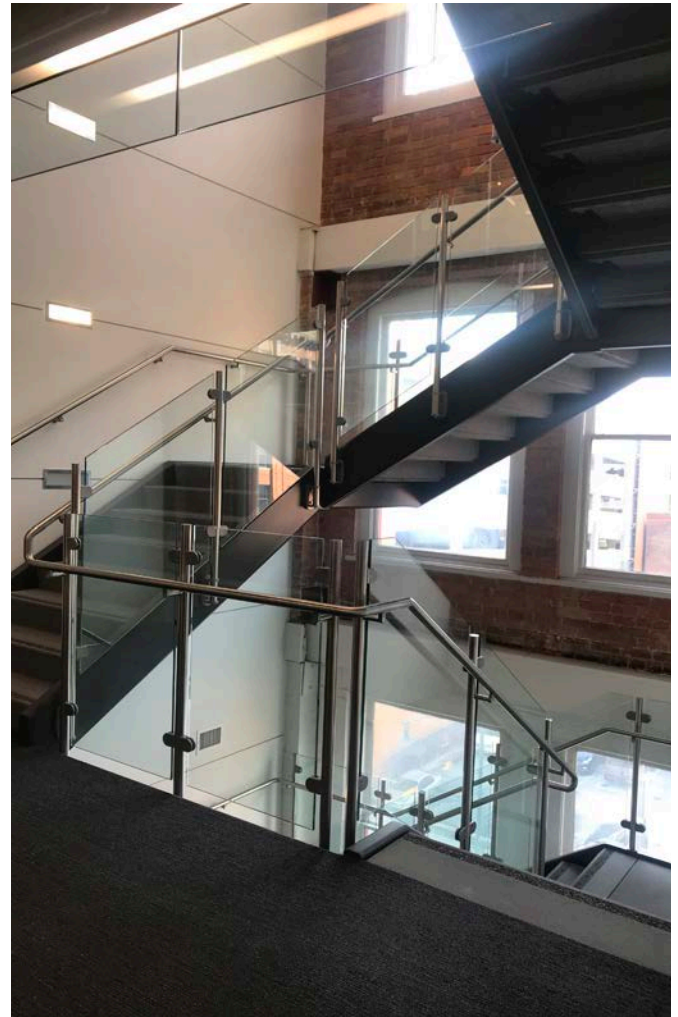


FLOOR PLANS



FOR LEASE STEAK 'N SHAKE BUILDING

107
S. PENNSYLVANIA ST.
Indianapolis, IN 46204



CONTACT US

JOHN VANDENBARK

Senior Vice President
+1 317 269 1046
john.vandenbark@cbre.com

BETH SALLEE

Associate
+1 317 269 1126
beth.sallee@cbre.com

© 2018 CBRE, Inc. All rights reserved. This information has been obtained from sources believed reliable, but has not been verified for accuracy or completeness. You should conduct a careful, independent investigation of the property and verify all information. Any reliance on this information is solely at your own risk. CBRE and the CBRE logo are service marks of CBRE, Inc. All other marks displayed on this document are the property of their respective owners. Photos herein are the property of their respective owners. Use of these images without the express written consent of the owner is prohibited.

www.cbre.us/steaknshake

CBRE