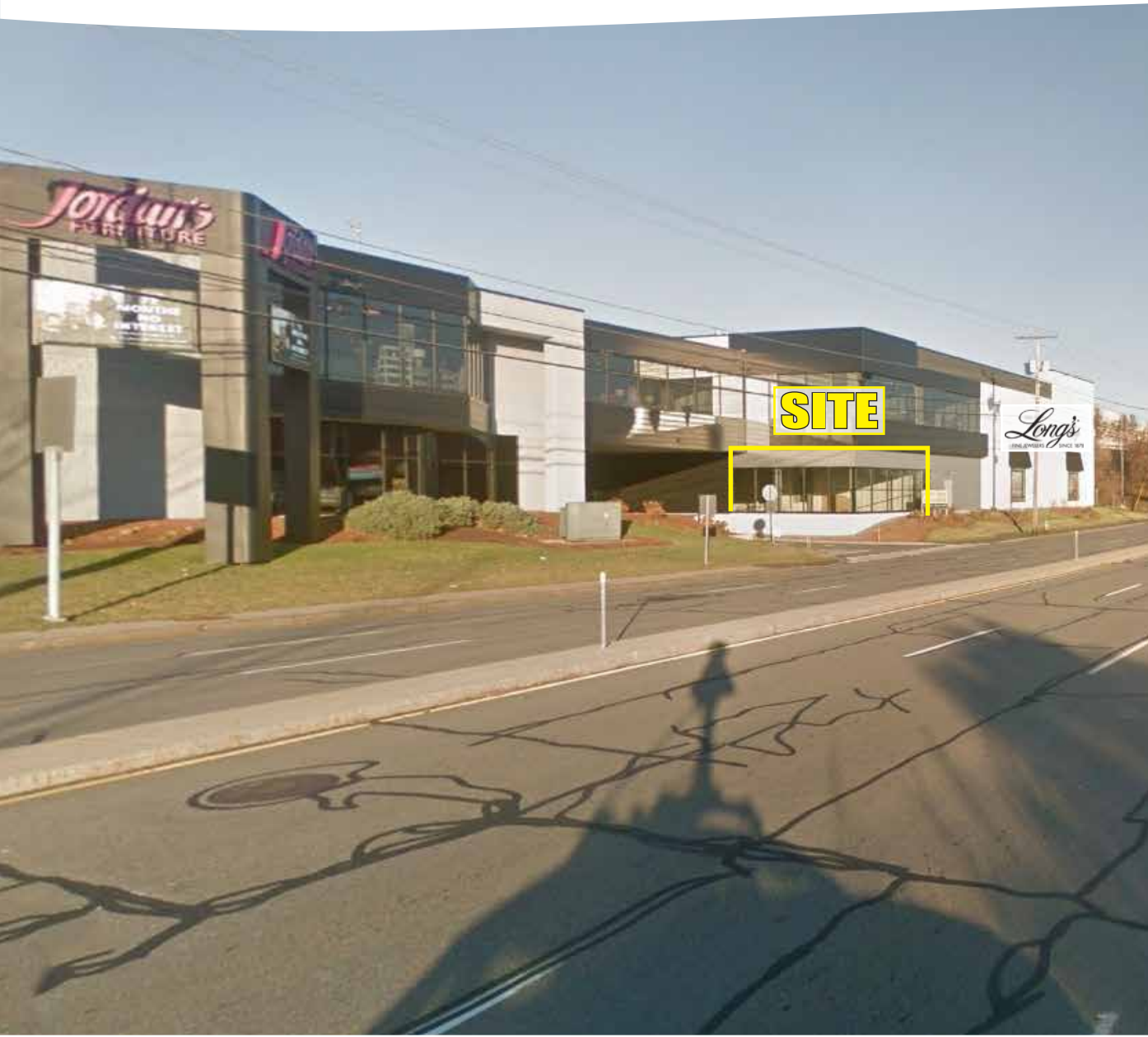


NASHUA, NH

323 Daniel Webster Highway



2,900 SF Available

- Join Jordan's & Long's Jewelers
- Excellent visibility
- 80 Parking spaces
- 38,000 ADT on Daniel Webster Highway
- Located at signaled traffic light

2017 DEMOGRAPHICS	3 MILE	5 MILE	7 MILE
Population	37,403	110,634	195,353
Med HH Income	\$96,939	\$85,565	\$87,791

Chris Kelly

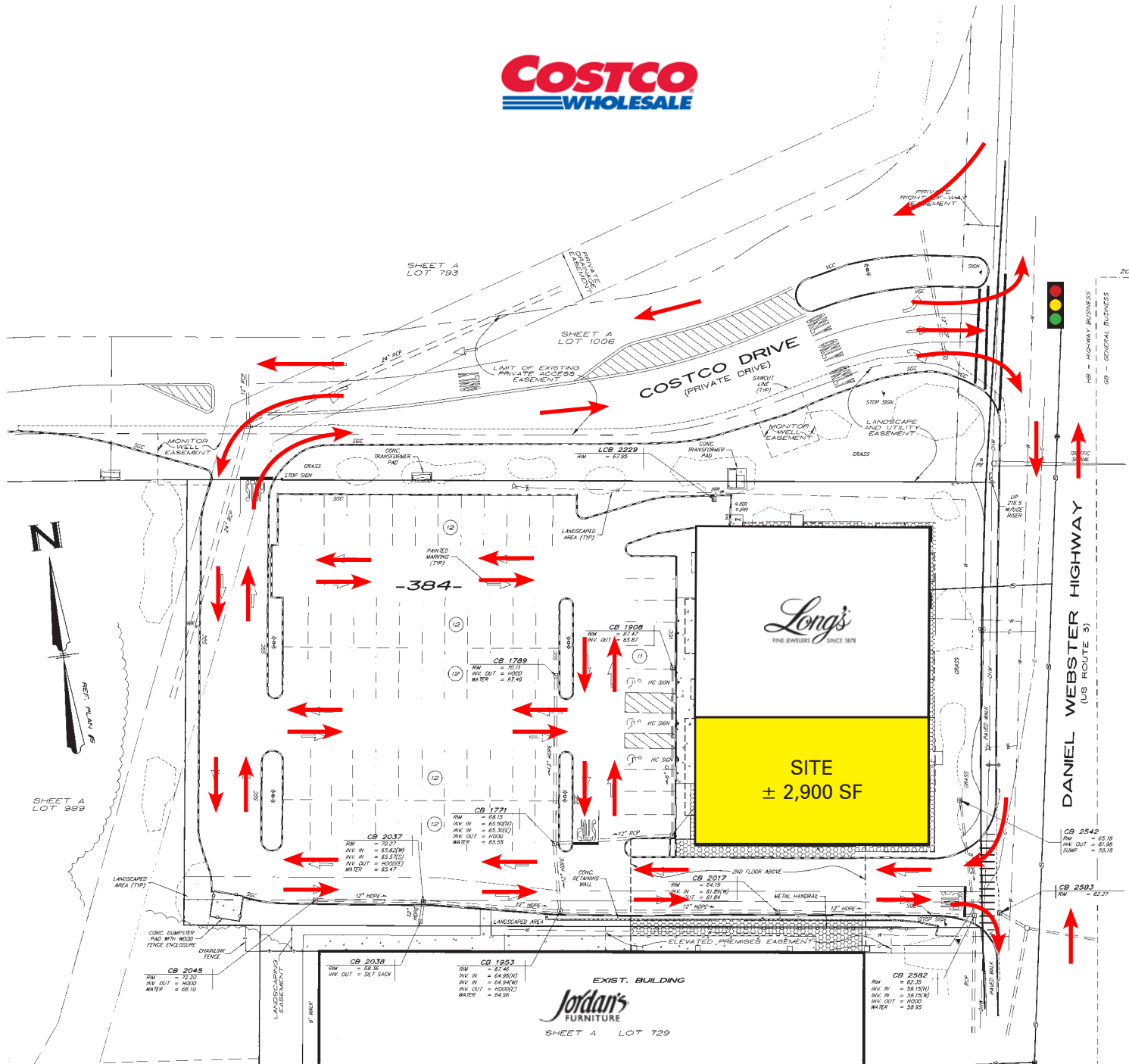
617.239.3630

ckelly@atlanticretail.com

ATLANTA | BOSTON | CHARLOTTE | LOS ANGELES | PITTSBURGH | WEST PALM BEACH

ATLANTICRETAIL.COM

© ATLANTIC RETAIL 2020 The information above has been obtained from sources believed reliable. While we do not doubt its accuracy, we have not verified it and make no guarantee, warranty or representation about it.



NASHUA, NH
 323 Daniel Webster Highway

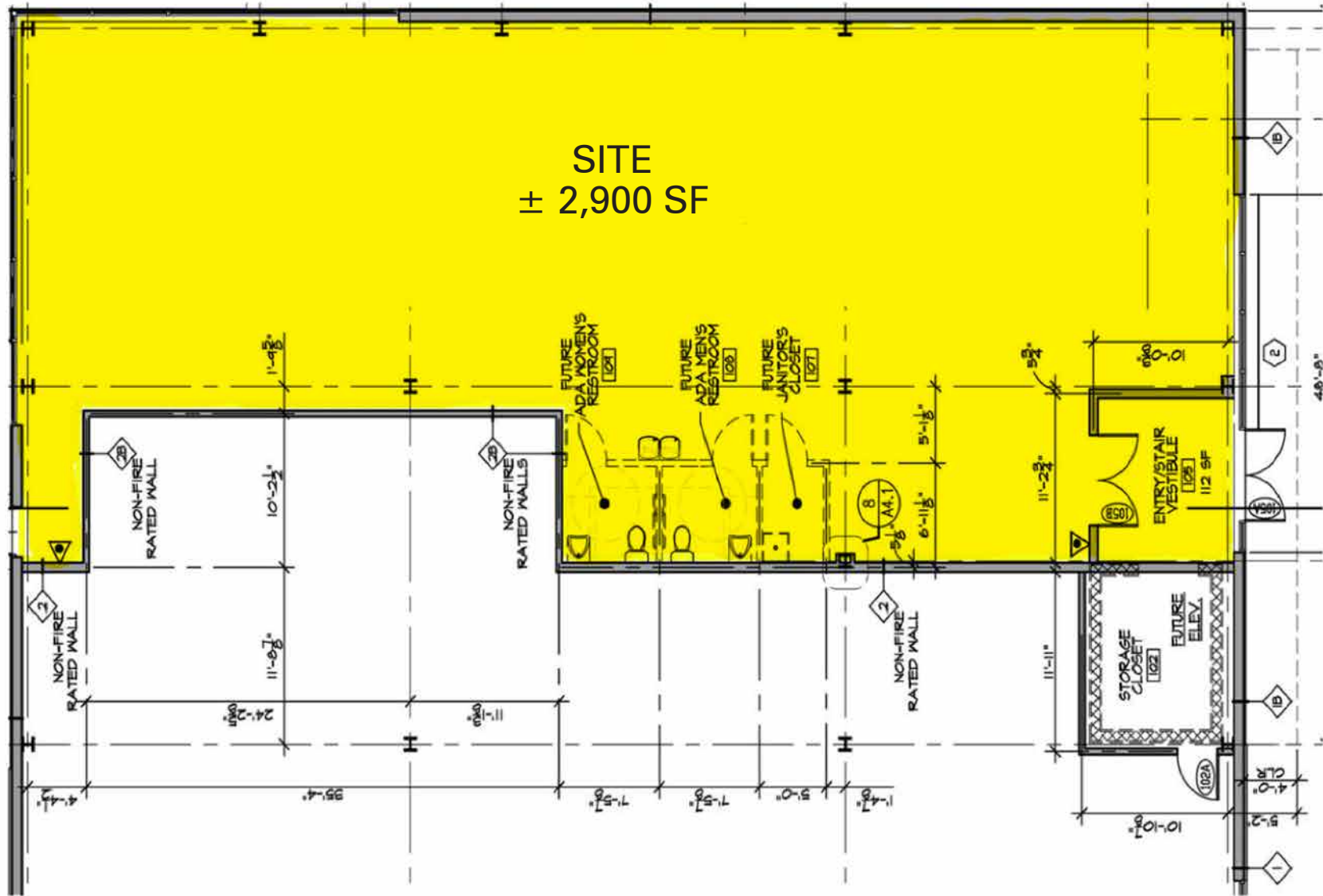
Chris Kelly

617.239.3630
 ckelly@atlanticretail.com

ATLANTICRETAIL.COM

Existing Floor Plan

DANIEL WEBSTER HIGHWAY



SITE
± 2,900 SF



NASHUA, NH

323 Daniel Webster Highway

Chris Kelly

617.239.3630

ckelly@atlanticretail.com



NASHUA, NH

TYNGSBOROUGH, MA



NASHUA, NH
323 Daniel Webster Highway

Chris Kelly
617.239.3630
ckelly@atlanticretail.com

Long's
FINE JEWELERS SINCE 1871

Jordan's
FURNITURE

TENANT SIGNAGE



NASHUA, NH

323 Daniel Webster Highway

Chris Kelly

617.239.3630
ckelly@atlanticretail.com

ATLANTICRETAIL.COM

SITE PHOTO

© ATLANTIC RETAIL 2020