

FOR LEASE

Garaventa Business Park

Concord, CA



AVAILABLE
±4,200-±8,400

Suite A/B ±4,200 SF

Suite C/D ±4,200 SF



1333 N. California Blvd., Ste. 500
Walnut Creek, CA 94596

T: +1 925 935 0770
F: +1 925 935 3409

cushmanwakefield.com

Property Highlights

Comprised of five buildings totaling ±92,000 square feet of building area, the Garaventa Business Park offers a variety of light industrial R&D/Flex, office and service commercial space to accommodate multiple tenant types and size range requirements. Conveniently located at the corner of Bates Avenue and Sprig Drive in North Concord California, the Garaventa Park is well situated with quick access to Highway 4, I-680 and 242 from the Port Chicago Highway and Solano Way exit ramps off Highway 4.

Nearby amenities are available including a golf course.

[View Site Specific COVID-19 Prevention Plan](#)

Tony Binswanger, SIOR
Managing Director
+1 925 627 2482
tony.binswanger@cushwake.com
LIC# 01861701

Bo Harkins
Director
+1 925 627 2481
bo.harkins@cushwake.com
LIC #01943785

Mike Goodwin
Associate
+1 925 627 2891
mike.goodwin@cushwake.com
LIC #02067534

FOR LEASE

Garaventa Business Park

Concord, CA



Tony Binswanger, SIOR
Managing Director
+1 925 627 2482
tony.binswanger@cushwake.com
LIC# 01861701

Bo Harkins
Director
+1 925 627 2481
bo.harkins@cushwake.com
LIC #01943785

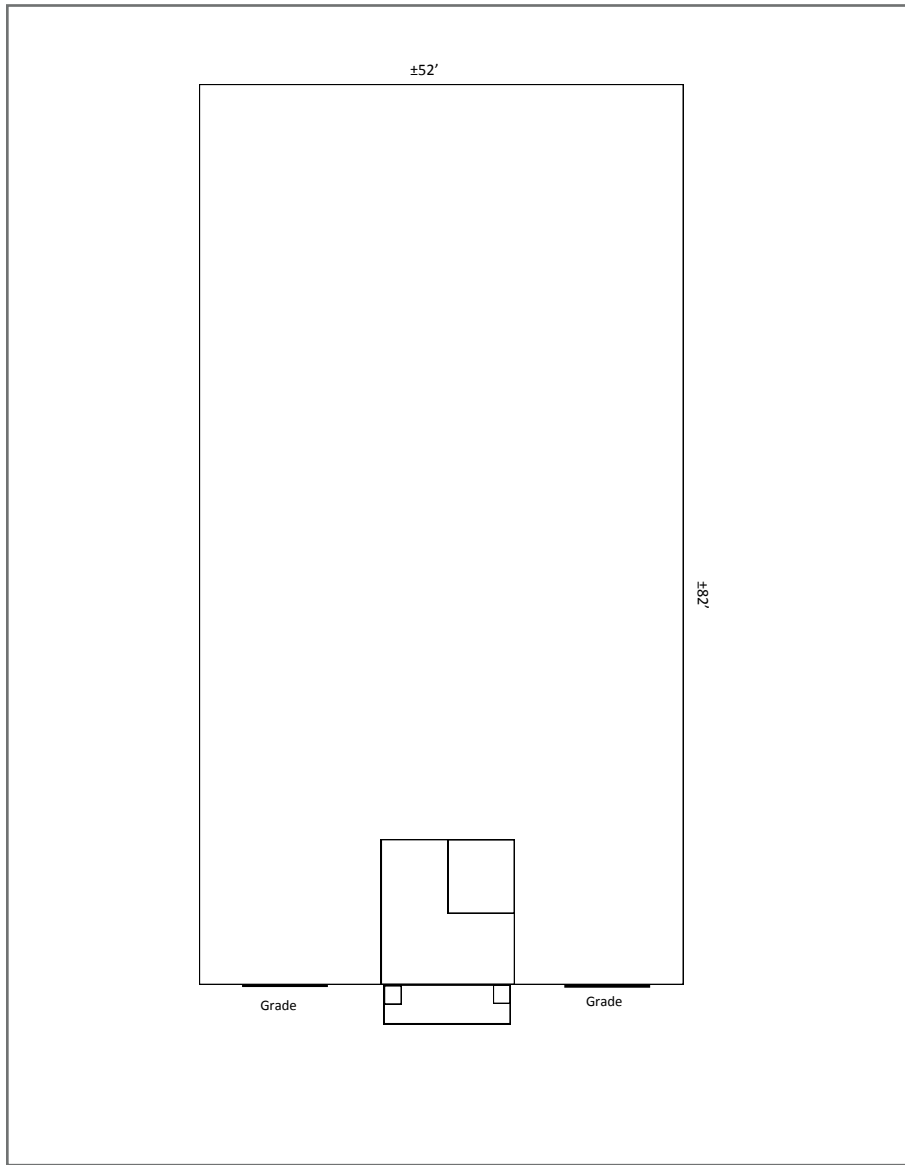
Mike Goodwin
Associate
+1 925 627 2891
mike.goodwin@cushwake.com
LIC #02067534



FOR LEASE

Garaventa Business Park

Concord, CA



- ±4,200 SF Total
- ±250 SF Office
- Two (2) Grade Doors
- ±18' Min. Clearance
- ±400 Amps @ 120/208 (to be verified)
- Endcap Unit
- Lease Rate: Call Broker

2430
Sprig Ct
Suite **A/B**

Tony Binswanger, SIOR
Managing Director
+1 925 627 2482
tony.binswanger@cushwake.com
LIC# 01861701

Bo Harkins
Director
+1 925 627 2481
bo.harkins@cushwake.com
LIC #01943785

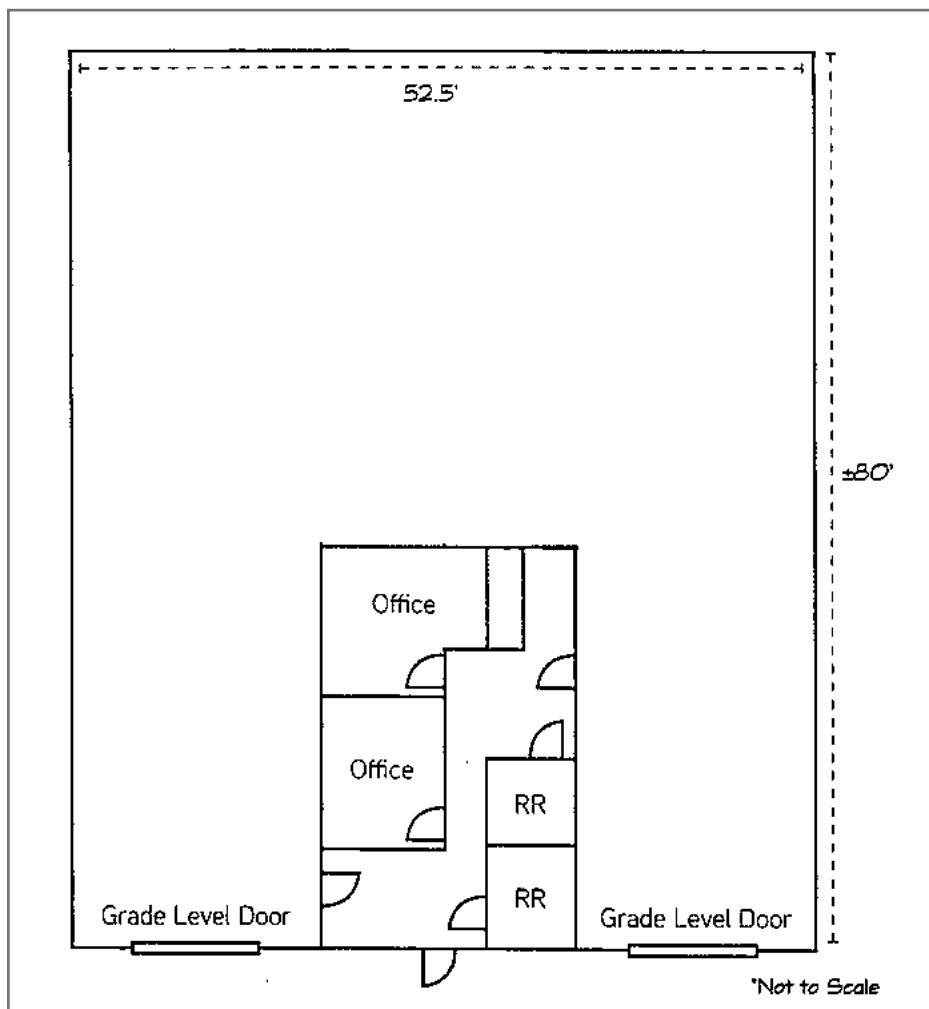
Mike Goodwin
Associate
+1 925 627 2891
mike.goodwin@cushwake.com
LIC #02067534



FOR LEASE

Garaventa Business Park

Concord, CA



- ±4,200 SF unit (±80' depth × ±52.5' width)
- Sprinklered and insulated
- Clear Height: ±18' minimum
- Two (2) grade-level doors (±12' × ±14')
- Power: ±200 amps @ 120/208 3-Phase (to be verified)
- Four (4) private offices with reception & Break area
- Warehouse: ±3,200 SF
- Restrooms: Two (2) restrooms

2430 Sprig Ct
Suites C+D

Tony Binswanger, SIOR
Managing Director
+1 925 627 2482
tony.binswanger@cushwake.com
LIC# 01861701

Bo Harkins
Director
+1 925 627 2481
bo.harkins@cushwake.com
LIC #01943785

Mike Goodwin
Associate
+1 925 627 2891
mike.goodwin@cushwake.com
LIC #02067534

