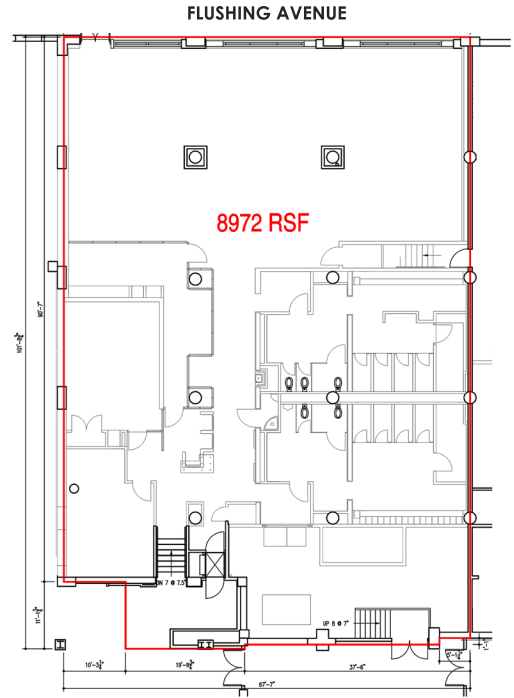


Williamsburg, Brooklyn

# 630 FLUSHING AVENUE



## 8,972 SF

IDEAL for GYM or YOGA STUDIO

PRIVATE OFF-STREET ENTRANCE

2 MILES TO MANHATTAN

24/7 BUILDING ACCESS

500-CAR PARKING LOT

3 FREIGHT ELEVATORS

eligible for: REAP | CEP | ECSP



**ACUMEN**  
CAPITAL PARTNERS LLC

FOR MORE INFO PLEASE CONTACT **GAUTAM DUA**  
718.360.9500 | [LEASING@ACUMENNY.COM](mailto:LEASING@ACUMENNY.COM)