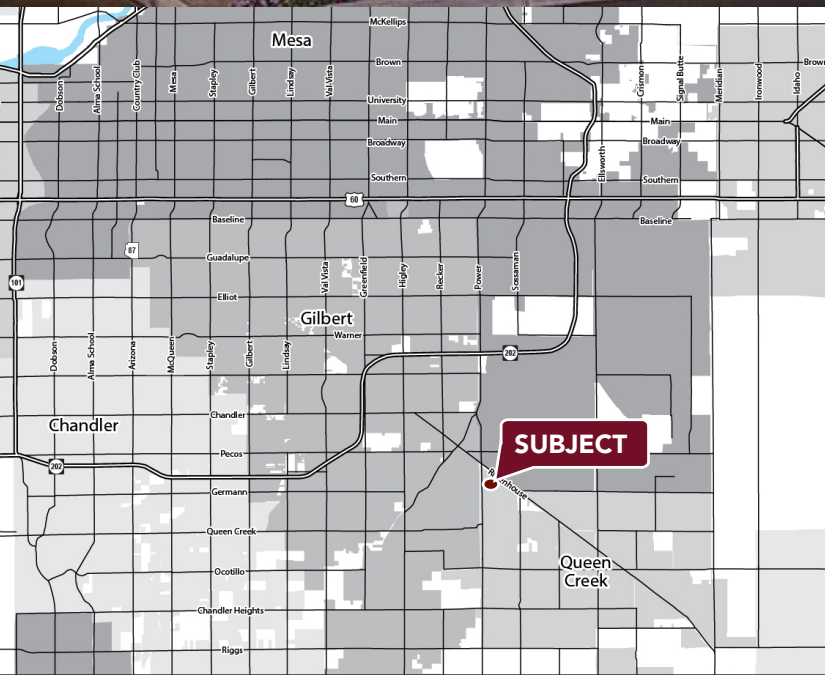


# POWER MARKETPLACE SHOPS

N/NEC POWER RD. & RITTENHOUSE RD.

QUEEN CREEK, AZ



## SHOP SPACE AVAILABLE

### AVAILABILITY

- 1,779 sf

### FEATURES

- 104,855 sf retail property located in Queen Creek, AZ.
- LA Fitness anchored shopping center
- Multiple access points

### NOTABLE TENANTS IN TRADE AREA



2017 Demographics	1 MILE	3 MILE	5 MILE
Estimated Population	12,599	64,584	157,711
Ave Household Income	\$123,023	\$117,543	\$112,227
Daytime Employment	1,339	10,769	31,773



MATT MILINOVICH  
602.778.3830  
mattm@srgaz.com

JAMES DECREMER  
602.778.3840  
jamesd@srgaz.com

# SHOP SPACE AVAILABLE

## POWER MARKETPLACE SHOPS

N/NEC POWER RD. & RITTENHOUSE RD.

QUEEN CREEK, AZ



**MATT MILINOVICH**  
602.778.3830  
mattm@srgaz.com

**JAMES DECREMER**  
602.778.3840  
jamesd@srgaz.com



# SHOP SPACES AVAILABLE

## POWER MARKETPLACE SHOPS

N/NEC POWER RD. & RITTENHOUSE RD.

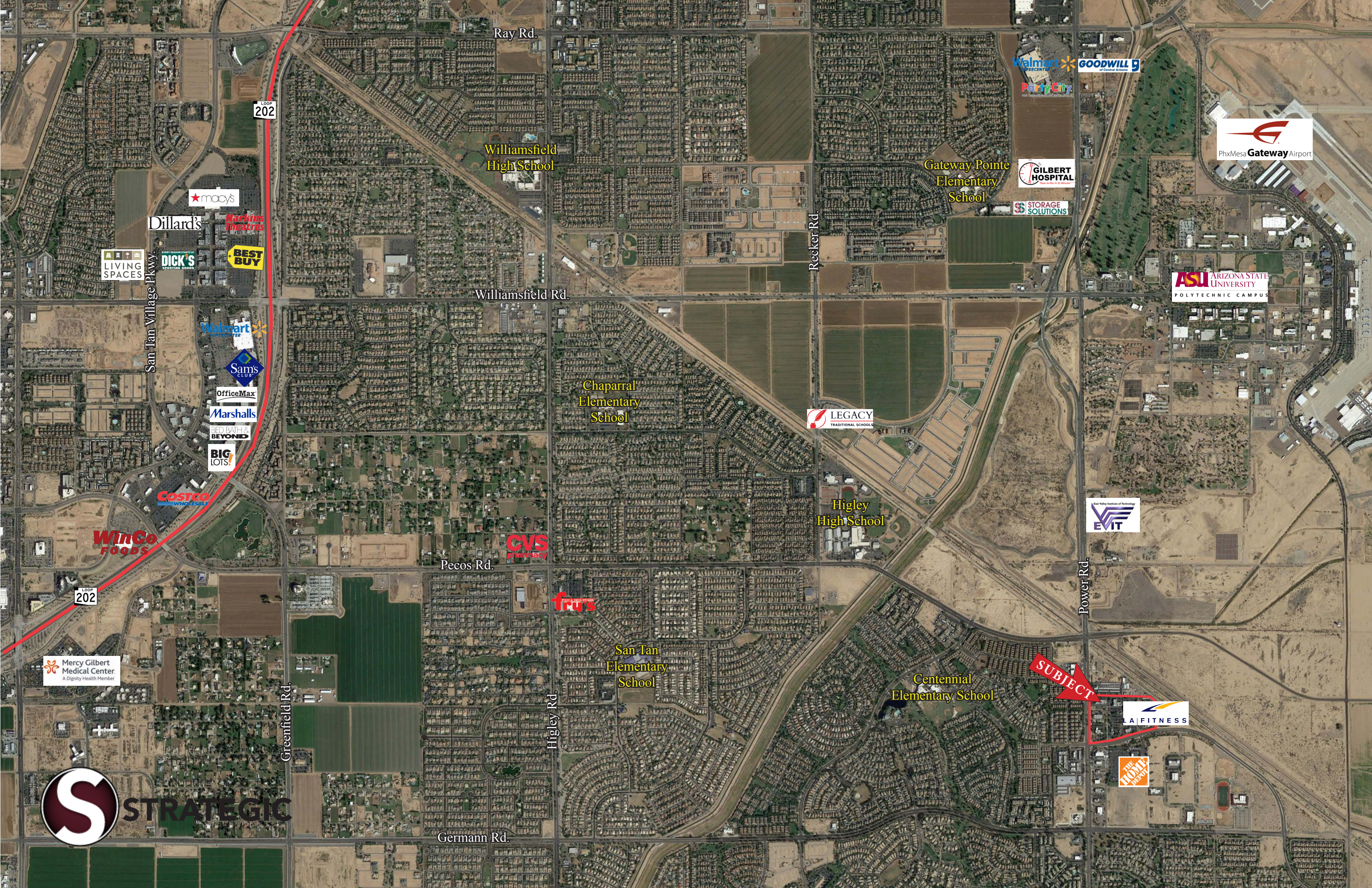
QUEEN CREEK, AZ



MATT MILINOVICH  
602.778.3830  
mattm@srgaz.com

JAMES DECREMER  
602.778.3840  
jamesd@srgaz.com





Ray Rd.

LOOP 202

Williamsfield High School

Gateway Pointe Elementary School

Walmart  
GOODWILL 9

Party City

PhxMesa Gateway Airport

GILBERT HOSPITAL

STORAGE SOLUTIONS

macy's

Dillard's

Markins Theatres

BEST BUY

LIVING SPACES

DICK'S SPORTING GOODS

San Tan Village Pkwy.

Walmart

Sams CLUB

OfficeMax

Marshalls

BED BATH & BEYOND

BIG LOTS

COSTCO WHOLESALE

WinCo FOODS

Williamsfield Rd.

Chaparral Elementary School

LEGACY TRADITIONAL SCHOOLS

Higley High School

East Valley Institute of Technology  
EVIT

Pecos Rd.

CVS PHARMACY

FRUITS

San Tan Elementary School

Centennial Elementary School

SUBJECT

LA FITNESS

THE HOME DEPOT

Mercy Gilbert Medical Center  
A Dignity Health Member

Greenfield Rd.

Higley Rd.

Germann Rd.

 STRATEGIC



# EXPANDED PROFILE

2000-2010 Census, 2017 Estimates with 2022 Projections

Calculated using Weighted Block Centroid from Block Groups

Lat/Lon: 33.2807/-111.6863

RF5

E Rittenhouse Rd & S Power Rd		1 mi radius	3 mi radius	5 mi radius
AZ				
<b>Population</b>				
Estimated Population (2017)		12,599	64,584	157,711
Projected Population (2022)		13,746	70,304	171,575
Census Population (2010)		10,457	51,808	119,219
Census Population (2000)		16	4,315	19,464
Projected Annual Growth (2017 to 2022)		1,146 1.8%	5,721 1.8%	13,864 1.8%
Historical Annual Growth (2010 to 2017)		2,142 2.9%	12,775 3.5%	38,491 4.6%
Historical Annual Growth (2000 to 2010)		10,441 6486.6	47,494 110.1	99,756 51.3%
Estimated Population Density (2017)		4,012 <i>psm</i>	2,285 <i>psm</i>	2,009 <i>psm</i>
Trade Area Size		3.14 <i>sq mi</i>	28.26 <i>sq mi</i>	78.51 <i>sq mi</i>
<b>Households</b>				
Estimated Households (2017)		3,989	21,153	51,110
Projected Households (2022)		4,201	22,288	53,795
Census Households (2010)		3,235	16,462	38,016
Census Households (2000)		5	1,302	5,886
Estimated Households with Children (2017)		2,065 51.8%	9,568 45.2%	23,722 46.4%
Estimated Average Household Size (2017)		3.16	3.03	3.07
<b>Average Household Income</b>				
Estimated Average Household Income (2017)		\$123,023	\$117,543	\$112,227
Projected Average Household Income (2022)		\$132,064	\$137,354	\$130,970
Estimated Average Family Income (2017)		\$140,435	\$131,667	\$123,797
<b>Median Household Income</b>				
Estimated Median Household Income (2017)		\$89,477	\$93,923	\$94,247
Projected Median Household Income (2022)		\$106,004	\$110,323	\$110,832
Estimated Median Family Income (2017)		\$100,202	\$102,687	\$103,802
<b>Per Capita Income</b>				
Estimated Per Capita Income (2017)		\$38,957	\$38,542	\$36,391
Projected Per Capita Income (2022)		\$40,363	\$43,584	\$41,083
Estimated Per Capita Income 5 Year Growth		\$1,405 3.6%	\$5,042 13.1%	\$4,692 12.9%
Estimated Average Household Net Worth (2017)		\$1,282,549	\$1,274,466	\$1,252,285
<b>Daytime Demos (2017)</b>				
Total Businesses		198	1,040	3,272
Total Employees		1,339	10,769	31,773
Company Headquarter Businesses		- -	2 0.2%	4 0.1%
Company Headquarter Employees		- -	36 0.3%	113 0.4%
Employee Population per Business		6.8	10.4	9.7
Residential Population per Business		63.6	62.1	48.2

This report was produced using data from private and government sources deemed to be reliable. The information herein is provided without representation or warranty.

# EXPANDED PROFILE

2000-2010 Census, 2017 Estimates with 2022 Projections

Calculated using Weighted Block Centroid from Block Groups

Lat/Lon: 33.2807/-111.6863

RF5

## E Rittenhouse Rd & S Power Rd

AZ

	1 mi radius		3 mi radius		5 mi radius	
<b>Race &amp; Ethnicity</b>						
White (2017)	9,808	77.9%	51,185	79.3%	123,872	78.5%
Black or African American (2017)	632	5.0%	3,015	4.7%	7,486	4.7%
American Indian or Alaska Native (2017)	133	1.1%	622	1.0%	1,305	0.8%
Asian (2017)	692	5.5%	3,530	5.5%	9,706	6.2%
Hawaiian or Pacific Islander (2017)	32	0.3%	122	0.2%	282	0.2%
Other Race (2017)	725	5.8%	3,441	5.3%	8,459	5.4%
Two or More Races (2017)	576	4.6%	2,669	4.1%	6,600	4.2%
Not Hispanic or Latino Population (2017)	10,246	81.3%	53,193	82.4%	128,873	81.7%
Hispanic or Latino Population (2017)	2,353	18.7%	11,390	17.6%	28,838	18.3%
Not Hispanic or Latino Population (2022)	10,936	79.6%	56,651	80.6%	137,166	79.9%
Hispanic or Latino Population (2022)	2,810	20.4%	13,653	19.4%	34,409	20.1%
Not Hispanic or Latino Population (2010)	8,719	83.4%	43,838	84.6%	100,453	84.3%
Hispanic or Latino Population (2010)	1,738	16.6%	7,971	15.4%	18,767	15.7%
Not Hispanic or Latino Population (2000)	13	80.3%	3,561	82.5%	15,684	80.6%
Hispanic or Latino Population (2000)	3	19.7%	754	17.5%	3,780	19.4%
Projected Hispanic Annual Growth (2017 to 2022)	457	3.9%	2,263	4.0%	5,571	3.9%
Historic Hispanic Annual Growth (2000 to 2017)	2,350	4349.0	10,636	83.0%	25,057	39.0%
<b>Age Distribution (2017)</b>						
Age Under 5	1,192	9.5%	5,522	8.5%	13,233	8.4%
Age 5 to 9 Years	1,224	9.7%	5,676	8.8%	13,870	8.8%
Age 10 to 14 Years	1,124	8.9%	5,295	8.2%	13,248	8.4%
Age 15 to 19 Years	842	6.7%	4,251	6.6%	10,593	6.7%
Age 20 to 24 Years	670	5.3%	3,259	5.0%	8,085	5.1%
Age 25 to 29 Years	985	7.8%	4,567	7.1%	11,615	7.4%
Age 30 to 34 Years	1,115	8.9%	5,352	8.3%	13,247	8.4%
Age 35 to 39 Years	1,122	8.9%	5,493	8.5%	13,596	8.6%
Age 40 to 44 Years	919	7.3%	4,446	6.9%	11,234	7.1%
Age 45 to 49 Years	753	6.0%	3,717	5.8%	10,026	6.4%
Age 50 to 54 Years	625	5.0%	3,231	5.0%	8,502	5.4%
Age 55 to 59 Years	578	4.6%	3,146	4.9%	7,803	4.9%
Age 60 to 64 Years	469	3.7%	3,175	4.9%	7,096	4.5%
Age 65 to 74 Years	614	4.9%	4,937	7.6%	10,243	6.5%
Age 75 to 84 Years	273	2.2%	1,935	3.0%	4,030	2.6%
Age 85 Years or Over	94	0.7%	581	0.9%	1,289	0.8%
Median Age	30.2		33.5		32.7	
<b>Gender Age Distribution (2017)</b>						
Female Population	6,383	50.7%	32,560	50.4%	79,645	50.5%
Age 0 to 19 Years	2,142	33.6%	9,952	30.6%	24,608	30.9%
Age 20 to 64 Years	3,708	58.1%	18,711	57.5%	46,830	58.8%
Age 65 Years or Over	534	8.4%	3,898	12.0%	8,206	10.3%
Female Median Age	30.6		34.0		33.1	
Male Population	6,216	49.3%	32,023	49.6%	78,066	49.5%
Age 0 to 19 Years	2,240	36.0%	10,792	33.7%	26,336	33.7%
Age 20 to 64 Years	3,529	56.8%	17,676	55.2%	44,374	56.8%
Age 65 Years or Over	447	7.2%	3,555	11.1%	7,356	9.4%
Male Median Age	29.8		32.9		32.2	

This report was produced using data from private and government sources deemed to be reliable. The information herein is provided without representation or warranty.

# EXPANDED PROFILE

2000-2010 Census, 2017 Estimates with 2022 Projections

Calculated using Weighted Block Centroid from Block Groups

Lat/Lon: 33.2807/-111.6863

RF5

## E Rittenhouse Rd & S Power Rd

AZ

1 mi radius      3 mi radius      5 mi radius

### Household Income Distribution (2017)

HH Income \$200,000 or More	370	9.3%	2,067	9.8%	5,067	9.9%
HH Income \$150,000 to \$199,999	534	13.4%	2,618	12.4%	5,960	11.7%
HH Income \$100,000 to \$149,999	870	21.8%	5,034	23.8%	12,168	23.8%
HH Income \$75,000 to \$99,999	610	15.3%	3,190	15.1%	7,835	15.3%
HH Income \$50,000 to \$74,999	654	16.4%	3,584	16.9%	8,761	17.1%
HH Income \$35,000 to \$49,999	362	9.1%	1,947	9.2%	4,652	9.1%
HH Income \$25,000 to \$34,999	151	3.8%	905	4.3%	2,248	4.4%
HH Income \$15,000 to \$24,999	230	5.8%	889	4.2%	2,058	4.0%
HH Income Under \$15,000	207	5.2%	920	4.3%	2,361	4.6%
HH Income \$35,000 or More	3,400	85.2%	18,440	87.2%	44,444	87.0%
HH Income \$75,000 or More	2,384	59.8%	12,909	61.0%	31,031	60.7%

### Housing (2017)

Total Housing Units	4,101		22,181		53,175	
Housing Units Occupied	3,989	97.3%	21,153	95.4%	51,110	96.1%
Housing Units Owner-Occupied	2,702	67.7%	16,667	78.8%	40,162	78.6%
Housing Units, Renter-Occupied	1,287	32.3%	4,487	21.2%	10,948	21.4%
Housing Units, Vacant	112	2.7%	1,027	4.6%	2,065	3.9%

### Marital Status (2017)

Never Married	2,217	24.5%	12,249	25.5%	31,127	26.5%
Currently Married	5,467	60.3%	28,853	60.0%	67,123	57.2%
Separated	281	3.1%	1,311	2.7%	3,992	3.4%
Widowed	109	1.2%	1,283	2.7%	3,113	2.7%
Divorced	985	10.9%	4,394	9.1%	12,004	10.2%

### Household Type (2017)

Population Family	11,513	91.4%	58,239	90.2%	142,404	90.3%
Population Non-Family	1,079	8.6%	5,840	9.0%	14,751	9.4%
Population Group Quarters	6	0.1%	505	0.8%	556	0.4%
Family Households	3,200	80.2%	16,787	79.4%	40,291	78.8%
Non-Family Households	789	19.8%	4,366	20.6%	10,819	21.2%
Married Couple with Children	1,487	27.2%	7,433	25.8%	18,157	27.0%
Average Family Household Size	3.6		3.5		3.5	

### Household Size (2017)

1 Person Households	558	14.0%	3,235	15.3%	7,858	15.4%
2 Person Households	1,088	27.3%	6,696	31.7%	15,227	29.8%
3 Person Households	745	18.7%	3,500	16.5%	8,918	17.4%
4 Person Households	817	20.5%	3,981	18.8%	9,991	19.5%
5 Person Households	461	11.6%	2,155	10.2%	5,259	10.3%
6 or More Person Households	320	8.0%	1,587	7.5%	3,857	7.5%

### Household Vehicles (2017)

Households with 0 Vehicles Available	149	3.7%	474	2.2%	1,054	2.1%
Households with 1 Vehicles Available	897	22.5%	4,952	23.4%	11,833	23.2%
Households with 2 or More Vehicles Available	2,943	73.8%	15,727	74.3%	38,223	74.8%
Total Vehicles Available	8,024		42,955		104,726	
Average Vehicles Per Household	2.0		2.0		2.0	

This report was produced using data from private and government sources deemed to be reliable. The information herein is provided without representation or warranty.

# EXPANDED PROFILE

2000-2010 Census, 2017 Estimates with 2022 Projections

Calculated using Weighted Block Centroid from Block Groups

Lat/Lon: 33.2807/-111.6863

RF5

## E Rittenhouse Rd & S Power Rd

AZ	1 mi radius	3 mi radius	5 mi radius
<b>Labor Force (2017)</b>			
Estimated Labor Population Age 16 Years or Over	8,864	47,182	115,016
Estimated Civilian Employed	6,452 72.8%	31,157 66.0%	79,586 69.2%
Estimated Civilian Unemployed	123 1.4%	791 1.7%	1,996 1.7%
Estimated in Armed Forces	18 0.2%	67 0.1%	190 0.2%
Estimated Not in Labor Force	2,271 25.6%	15,165 32.1%	33,243 28.9%
Unemployment Rate	1.4%	1.7%	1.7%
<b>Occupation (2015)</b>			
Occupation: Population Age 16 Years or Over	6,432	30,959	80,524
Management, Business, Financial Operations	1,290 20.1%	5,666 18.3%	15,347 19.1%
Professional, Related	1,590 24.7%	8,442 27.3%	21,065 26.2%
Service	1,005 15.6%	4,199 13.6%	11,493 14.3%
Sales, Office	1,982 30.8%	8,810 28.5%	21,734 27.0%
Farming, Fishing, Forestry	7 0.1%	46 0.1%	245 0.3%
Construct, Extraction, Maintenance	180 2.8%	1,604 5.2%	4,524 5.6%
Production, Transport Material Moving	378 5.9%	2,192 7.1%	6,115 7.6%
White Collar Workers	4,862 75.6%	22,918 74.0%	58,146 72.2%
Blue Collar Workers	1,570 24.4%	8,041 26.0%	22,377 27.8%
<b>Consumer Expenditure (2017)</b>			
Total Household Expenditure	\$329 M	\$1.68 B	\$3.91 B
Total Non-Retail Expenditure	\$173 M 52.5%	\$880 M 52.5%	\$2.05 B 52.5%
Total Retail Expenditure	\$156 M 47.5%	\$796 M 47.5%	\$1.86 B 47.5%
Apparel	\$11.7 M 3.6%	\$59.3 M 3.5%	\$138 M 3.5%
Contributions	\$15.9 M 4.8%	\$81.3 M 4.9%	\$188 M 4.8%
Education	\$13.8 M 4.2%	\$69.6 M 4.2%	\$162 M 4.1%
Entertainment	\$18.7 M 5.7%	\$95.5 M 5.7%	\$223 M 5.7%
Food and Beverages	\$47.0 M 14.3%	\$239 M 14.3%	\$559 M 14.3%
Furnishings and Equipment	\$11.8 M 3.6%	\$60.0 M 3.6%	\$140 M 3.6%
Gifts	\$8.80 M 2.7%	\$45.0 M 2.7%	\$104 M 2.7%
Health Care	\$24.5 M 7.4%	\$125 M 7.5%	\$293 M 7.5%
Household Operations	\$10.3 M 3.1%	\$52.1 M 3.1%	\$121 M 3.1%
Miscellaneous Expenses	\$4.65 M 1.4%	\$23.8 M 1.4%	\$55.6 M 1.4%
Personal Care	\$4.25 M 1.3%	\$21.6 M 1.3%	\$50.5 M 1.3%
Personal Insurance	\$2.68 M 0.8%	\$13.6 M 0.8%	\$31.6 M 0.8%
Reading	\$729 K 0.2%	\$3.72 M 0.2%	\$8.68 M 0.2%
Shelter	\$67.9 M 20.6%	\$347 M 20.7%	\$808 M 20.7%
Tobacco	\$1.73 M 0.5%	\$8.80 M 0.5%	\$20.7 M 0.5%
Transportation	\$61.1 M 18.6%	\$312 M 18.6%	\$729 M 18.6%
Utilities	\$23.4 M 7.1%	\$119 M 7.1%	\$278 M 7.1%
<b>Educational Attainment (2017)</b>			
Adult Population Age 25 Years or Over	7,547	40,581	98,681
Elementary (Grade Level 0 to 8)	140 1.9%	789 1.9%	1,807 1.8%
Some High School (Grade Level 9 to 11)	88 1.2%	885 2.2%	2,611 2.6%
High School Graduate	981 13.0%	6,102 15.0%	15,435 15.6%
Some College	1,959 26.0%	10,556 26.0%	25,911 26.3%
Associate Degree Only	780 10.3%	4,479 11.0%	11,149 11.3%
Bachelor Degree Only	2,372 31.4%	11,929 29.4%	28,009 28.4%
Graduate Degree	1,226 16.3%	5,841 14.4%	13,761 13.9%

This report was produced using data from private and government sources deemed to be reliable. The information herein is provided without representation or warranty.



# EXPANDED PROFILE

2000-2010 Census, 2017 Estimates with 2022 Projections

Calculated using Weighted Block Centroid from Block Groups

Lat/Lon: 33.2807/-111.6863

RF5

## E Rittenhouse Rd & S Power Rd

AZ

	1 mi radius		3 mi radius		5 mi radius	
<b>Units In Structure (2015)</b>						
1 Detached Unit	3,036	93.9%	18,912	114.9	45,262	119.1
1 Attached Unit	110	3.4%	382	2.3%	1,509	4.0%
2 to 4 Units	165	5.1%	239	1.5%	633	1.7%
5 to 9 Units	106	3.3%	188	1.1%	670	1.8%
10 to 19 Units	309	9.6%	511	3.1%	1,166	3.1%
20 to 49 Units	111	3.4%	216	1.3%	716	1.9%
50 or More Units	103	3.2%	286	1.7%	709	1.9%
Mobile Home or Trailer	38	1.2%	257	1.6%	899	2.4%
Other Structure	2	0.1%	11	0.1%	29	0.1%
<b>Homes Built By Year (2015)</b>						
Homes Built 2010 or later	20	0.6%	573	3.5%	1,229	3.2%
Homes Built 2000 to 2009	2,840	87.8%	14,135	85.9%	31,482	82.8%
Homes Built 1990 to 1999	304	9.4%	1,866	11.3%	6,396	16.8%
Homes Built 1980 to 1989	131	4.0%	799	4.9%	2,220	5.8%
Homes Built 1970 to 1979	172	5.3%	974	5.9%	2,206	5.8%
Homes Built 1960 to 1969	66	2.1%	395	2.4%	893	2.3%
Homes Built 1950 to 1959	51	1.6%	468	2.8%	746	2.0%
Homes Built Before 1949	9	0.3%	136	0.8%	404	1.1%
<b>Home Values (2015)</b>						
Home Values \$1,000,000 or More	20	1.0%	140	1.1%	295	1.0%
Home Values \$500,000 to \$999,999	150	7.2%	1,186	9.5%	3,297	11.4%
Home Values \$400,000 to \$499,999	210	10.1%	1,199	9.6%	3,090	10.7%
Home Values \$300,000 to \$399,999	562	27.0%	3,829	30.8%	9,163	31.8%
Home Values \$200,000 to \$299,999	1,076	51.6%	5,791	46.5%	13,658	47.4%
Home Values \$150,000 to \$199,999	438	21.0%	2,844	22.9%	6,917	24.0%
Home Values \$100,000 to \$149,999	180	8.6%	1,063	8.5%	3,143	10.9%
Home Values \$70,000 to \$99,999	11	0.5%	102	0.8%	312	1.1%
Home Values \$50,000 to \$69,999	6	0.3%	31	0.2%	109	0.4%
Home Values \$25,000 to \$49,999	4	0.2%	47	0.4%	147	0.5%
Home Values Under \$25,000	30	1.4%	242	1.9%	604	2.1%
Owner-Occupied Median Home Value	\$265,615		\$267,606		\$267,293	
Renter-Occupied Median Rent	\$1,022		\$1,036		\$1,042	
<b>Transportation To Work (2015)</b>						
Drive to Work Alone	4,666	77.4%	23,906	77.8%	60,343	79.1%
Drive to Work in Carpool	608	10.1%	2,931	9.5%	6,928	9.1%
Travel to Work by Public Transportation	45	0.7%	239	0.8%	669	0.9%
Drive to Work on Motorcycle	43	0.7%	239	0.8%	409	0.5%
Walk or Bicycle to Work	73	1.2%	576	1.9%	1,321	1.7%
Other Means	67	1.1%	208	0.7%	587	0.8%
Work at Home	527	8.7%	2,644	8.6%	6,050	7.9%
<b>Travel Time (2015)</b>						
Travel to Work in 14 Minutes or Less	1,000	18.2%	4,522	16.1%	11,789	16.8%
Travel to Work in 15 to 29 Minutes	1,737	31.6%	9,020	32.1%	24,925	35.5%
Travel to Work in 30 to 59 Minutes	2,431	44.2%	11,901	42.4%	29,298	41.7%
Travel to Work in 60 Minutes or More	691	12.6%	2,823	10.0%	8,113	11.5%
Average Minutes Travel to Work	29.7		29.2		28.6	

This report was produced using data from private and government sources deemed to be reliable. The information herein is provided without representation or warranty.