



**Neighborhood Living in New Jersey's
Newest Mixed Use District**



OFFICE OPPORTUNITIES

WORKPLACE
NORTH MARKET

**The Cinema
Building**



Produce your best work.

Situated on the former North American headquarters of Mercedes-Benz, the offices at North Market offer a sophisticated, modern space for your business to thrive. In these brand new buildings, we've paired dynamic contemporary architecture with timeless materials — corrugated metal, spanning plate glass windows, exposed ceilings, and more. And when this design is integrated with the exciting district around it, you're in an environment where your teams can truly excel.

All in, North Market offers an office experience not provided by any other buildings in the area.



WORKPLACE

NORTH MARKET

The flagship office building of the North Market district, with a location on the plaza offering high profile visibility for your business.



± 41,025 SF of Class A office
(± 13,675 SF per floor)



Loft-like open floor plates,
with custom buildouts available



14' exposed ceiling heights,
10' if enclosed



Unique office amenities &
ground floor retail





The Cinema Building

A beautiful, glass cube building featuring a landscaped outdoor roof deck and cinematic views of the Pascack Valley and New York City.

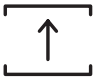
Up to $\pm 50,800$ SF of Class A office
($\pm 25,400$ SF per floor)



Natural light flooded floor plates
that can be built to suit



14' exposed ceiling heights,
10' if enclosed

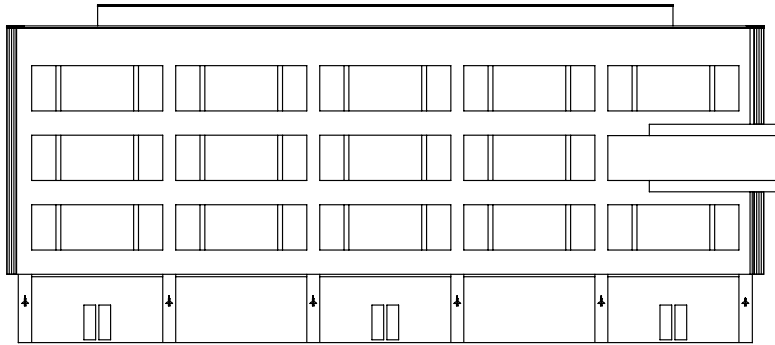


Unique office amenities &
ground floor retail



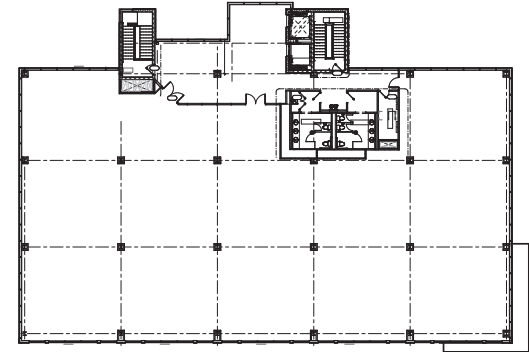
Stacking Plans

WORKPLACE NORTH MARKET



- FLOOR 4
OFFICE
- FLOOR 3
OFFICE
- FLOOR 2
OFFICE
- FLOOR 1
RETAIL

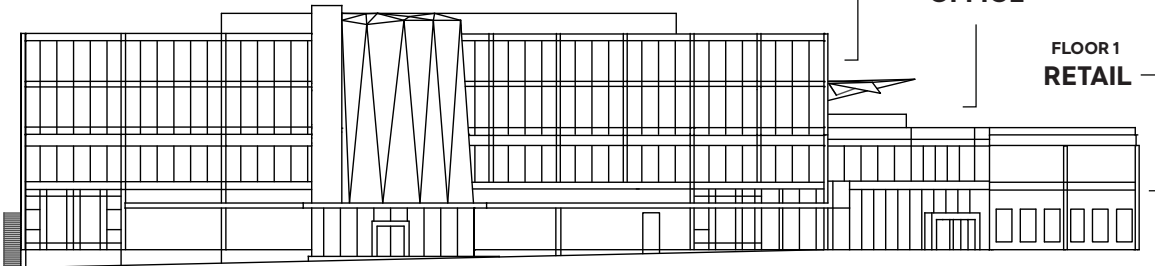
FLOOR PLATE



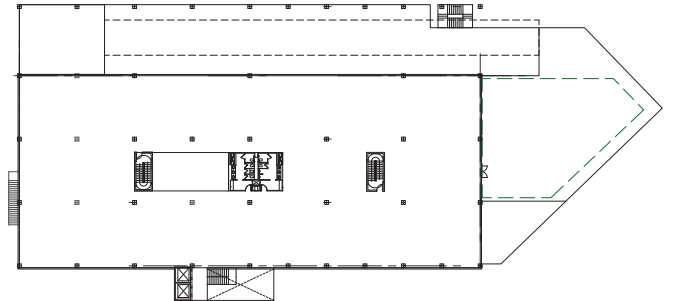
The Cinema Building



- FLOOR 3
OFFICE
- FLOOR 2
OFFICE
- FLOOR 1
RETAIL



FLOOR PLATE



Downtown as a district.

Well planned. Connected. As comfortable as an outdoor living room. North Market and its centerpiece plaza form a new neighborhood district. With a completely unique concept and design, it offers the kind of mixed-use lifestyle one of the highest demographic regions in the country has needed for a very long time.



Amenities like you live here.

The benefits of working in North Market set us apart from any other office buildings in the area. By integrating services from our neighboring luxury residential properties, everything you need is just a moment away.



Work Beyond the Office

From our neighborhood cafes to the district's centerpiece plaza, your team will always find the space they need to work or meet.



Fitness Center & Spa

Access to the full fitness center and indoor spa of North Market's luxury residential – including hot tub, cold plunge, sauna, and steam room.



Steps to Shopping & Dining

Walkable retail throughout the district will take you from your morning coffee to your evening glass of wine – and everything in between.



Car Charging Stations

On-site charging stations for electric cars, supporting smart energy use in combination with the buildings' solar electricity panels.



Outdoor Pool

Start a beautiful day, or close one out, at the luxury outdoor pool of North Market's luxury residential buildings. Available to all office tenants.

Site Plan



Retail



Parking

BLDG 1
± 7,000 SF Retail
156 Apartments



WORKPLACE
NORTH MARKET
BLDG 2
± 11,000 SF Retail
± 41,025 SF Office
Plaza

BLDG 3
± 10,000 SF Retail
152 Apartments

BLDG 6
133 Room Boutique Hotel

The Cinema
Building
BLDG 4/5
± 40,000 SF Retail
± 50,800 Office

Grand Avenue West



Mercedes Drive



THE SHOPPES AT DEPIERO FARM

± 231,000 SF Retail



STARBUCKS

+ More



Proposed site plan is valid as of printing date and is subject to change (2/20).

Area Map



Perfect Location

North Market is easily accessible, with Exit 172 of the Garden State Parkway only 1/4 mile to the west, in the heart of one of the strongest markets in the New York metropolitan area.

Unparalleled Value

Our immediate area features nearly 3 million SF of Class A office and multiple corporate headquarters, including KPMG, BMW, Benjamin Moore, Sony, and Sharp Electronics.

Surrounding Retail & Services

Best in class retail and services surround North Market, including Tice's Corner, Life Time Fitness, Memorial Sloan Kettering, and more.

True Mixed Use

Combining not only retail and office, but also luxury multi-family residential and a boutique hotel, North Market is a true mixed use urban neighborhood in suburban environs.

The Farm

Forming half of North Market is THE FARM, a retail shopping experience anchored by northern New Jersey's first Wegmans, and built on the former site of DePiero Farm — one of New Jersey's iconic family farms. Visit explorethefarm.com to learn more.

Wegmans

ULTA
BEAUTY

 lululemon





For additional information, please contact
our exclusive leasing teams:

FOR OFFICE



Frank D. Recine
Executive Managing Director
973.829.4738
frank.recine@am.jll.com

FOR RETAIL

SILBERT

David A. Greenman
SVP, Retail Services Group
908.604.6900 x106
dgreenman@silbertrealestate.com

Brian S. Silbert
President & CEO
908.604.6900 x116
bsilbert@silbertrealestate.com

DEVELOPED & OWNED BY
The S.Hekemian Group

PLANNING DESIGN BY
CALLISON|TKL™

© The S.Hekemian Group, LLC. All rights reserved.

Although all information furnished regarding property for sale, rental, or financing is from sources deemed reliable, such information has not been verified and is subject to change, and no express representation is made nor is any to be implied as to the accuracy thereof, and it is submitted subject to errors, omissions, changes of price, rental, or other conditions, prior sale, lease, or financing, or withdrawal without notice.

Montvale, New Jersey

northmarketdistrict.com